

Product & Usage Guide



Providing quality bags that keep your samples safe, for results you can trust.

Standard Bags • Write-On Bags • Filter Bags

Thio Bags • Stand Up Bags • Specialty Bags

Sponge Bags • Plain Blender Bags • Round Bottom Seal Bags

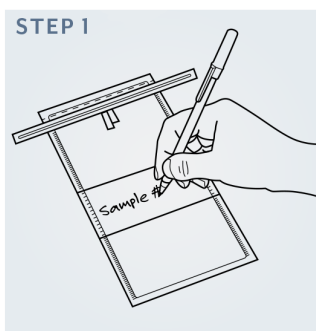
Whirl-Pak® Product and Usage Guide

Ideal for water sampling, dairy, environmental, food and beverage, forensic science, genetics, industrial markets, medical, pharmaceutical, research, soil, surface, veterinary, and biomedical.

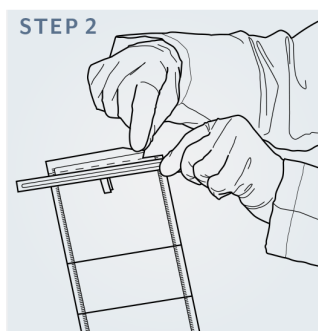
Whirl-Pak® Features:

- **Puncture-Proof Closure Tabs:** Eliminates sharp points which could puncture the bags, scratch your hands, or puncture gloves.
- **Guaranteed Sterilization:** +1 Sterilization process of sterilizing sealed cartons of Whirl-Pak® bags after manufacturing, which is completed at an independent ISO-certified facility.
- **Traceable Sterility:** Download sterility certificates from whirl-pak.com using the lot number and master number on every box.
- **Film:** Exceptionally clear film and superior strength by using co-extrusion low-density and linear low-density, virgin polyethylene.
- **Leak-Proof Closure:** Whirling or folding the bag over three times and securing with the closure tabs creates a leak-proof sampling container.
- **Reduced Storage and Shipping:** Whirl-Pak® bags can save you money as they require less space vs. other sampling containers, which saves on shipping, storage, and waste costs.

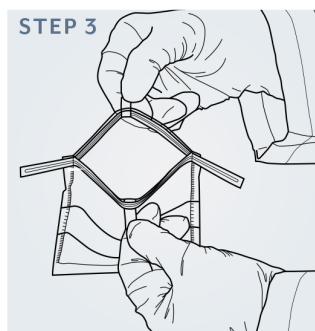
How Does Whirl-Pak® Work?



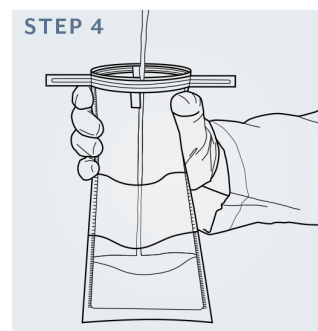
Label your sample if using a write-on bag.



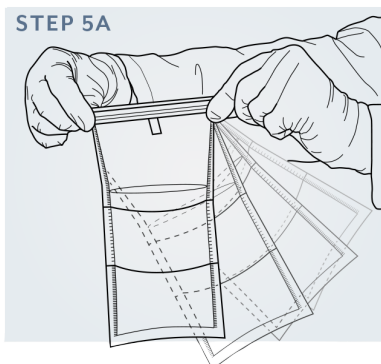
To open, tear off the top along the perforation.



Use the Tyvek® pull tabs to open without contamination.



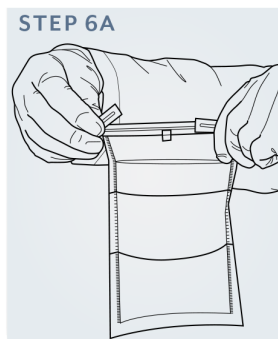
Place sample in bag. Perfect for liquids or solids.



Hold bag by the tabs and whirl three to four times to make a seal.



Or, fold the tab over tightly three to four times to close.



Secure closure, bend wire ends.



Or, bring the two wire ends together and twist time them.

Standard Bags

Popular throughout the food industry, sample bags are a convenient, low-cost way to handle liquid or solid samples. Leakproof and airtight, they occupy a fraction of the space of rigid containers and offer easier disposal.

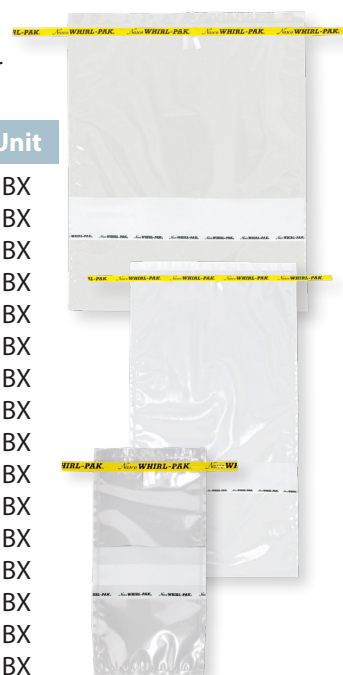
Stock #	Wire Style	Capacity	Size	Thickness	Packaging	Unit
486-3009	Round	2-oz	3"W x 5"L	2.25 mil	500 bg/bx	BX
486-3010	Round	4-oz	3"W x 7-¼"L	2.25 mil	500 bg/bx	BX
486-3992	Round	7-oz	3-¼"W x 7"L	3 mil	500 bg/bx	BX
486-3014	Round	13-oz	5-¼"W x 7-½"L	3 mil	500 bg/bx	BX
486-3015	Round	18-oz	4-½"W x 9"L	2.5 mil	500 bg/bx	BX
486-3020	Round	24-oz	6"W x 9"L	3 mil	500 bg/bx	BX
486-3016	Round	24-oz	6"W x 9"L	4 mil	500 bg/bx	BX
486-3017	Round	27-oz	5"W x 12"L	3 mil	500 bg/bx	BX
486-3023	Round	36-oz	5"W x 15"L	3 mil	500 bg/bx	BX
486-3027	Round	42-oz	6"W x 15"L	3 mil	500 bg/bx	BX
486-3022	Round	55-oz	7-½"W x 12"L	3 mil	500 bg/bx	BX
486-3998	Round	69-oz	7-½"W x 15"L	3 mil	500 bg/bx	BX



Write-On Bags

Write-on strip makes sample identification easier and more convenient. Easily write on the strip with a regular ballpoint pen, pencil, or felt-tip marker. The paper-like finish virtually eliminates ink smearing.

Stock #	Wire Style	Capacity	Size	Thickness	Packaging	Unit
486-3001	Round	1-oz	2-½"W x 5"L	2.25 mil	500 bg/bx	BX
486-3006	Round	2-oz	3"W x 5"L	2.25 mil	500 bg/bx	BX
486-3339	Flat	4-oz	3"W x 7-¼"L	2.25 mil	500 bg/bx	BX
486-3011	Round	4-oz	3"W x 7-¼"L	2.25 mil	500 bg/bx	BX
486-3099	Round	7-oz	3-¼"W x 7"L	2.5 mil	500 bg/bx	BX
486-3003	Round	13-oz	5-¼"W x 7-½"L	2.5 mil	500 bg/bx	BX
486-3018	Round	18-oz	4-½"W x 9"L	2.5 mil	500 bg/bx	BX
486-3341	Flat	18-oz	4-½"W x 9"L	2.5 mil	500 bg/bx	BX
486-3019	Round	24-oz	6"W x 9"L	3 mil	500 bg/bx	BX
486-3196	Round	24-oz	6"W x 9"L	4 mil	500 bg/bx	BX
486-3021	Round	27-oz	5"W x 12"L	3 mil	500 bg/bx	BX
486-3195	Round	55-oz	7-½"W x 12"L	4 mil	500 bg/bx	BX
486-3515	Round	69-oz	7-½"W x 12"L	3 mil	500 bg/bx	BX
486-3445	1 Flat, 1 Round	92-oz	10"W x 15"L	4 mil	500 bg/bx	BX
486-3446	1 Flat, 1 Round	123-oz	10"W x 20"L	4 mil	500 bg/bx	BX
486-3184	1 Flat, 1 Round	184-oz	15"W x 20"L	4 mil	500 bg/bx	BX



Filter Bags

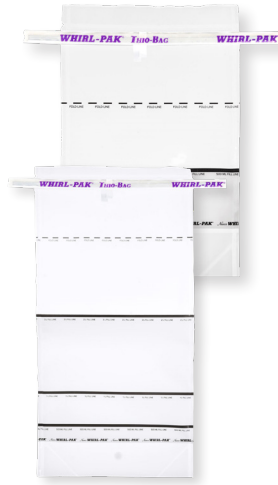
Filter layer separates the liquid and solids, allowing for easy pipetting of the sample. Made of extra-heavy polyethylene for use with homogenizer blenders. All bags have a write-on strip and wire closure.

Stock #	Wire Style	Capacity	Size	Thickness	Packaging	Unit
486-3260	Round	7-oz	3-¼"W x 7"L	3 mil	250 bg/bx	BX
486-3256	Round	24-oz	6"W x 9"L	4 mil	250 bg/bx	BX
486-3458	No Wire	55-oz	7-½"W x 12"L	4 mil	250 bg/bx	BX
486-3255	Round	55-oz	7-½"W x 12"L	4 mil	250 bg/bx	BX
486-3266	Round	69-oz	7-½"W x 15"L	4 mil	250 bg/bx	BX
486-3262	1 Flat, 1 Round	92-oz	10"W x 15"L	4 mil	100 bg/bx	BX
486-3263	1 Flat, 1 Round	138-oz	15"W x 15"L	4 mil	100 bg/bx	BX



Thio-Bags®

Specifically designed for sampling chlorinated water from municipalities, swimming pools, wastewater, and other areas to test for fecal coliforms or other bacteria. Each sterile bag contains a non-toxic, non-nutritive tablet containing active sodium thiosulfate to neutralize chlorine at the time of collection. The bag is EPA approved and has the additional benefits of saving technician time, utility costs, storage space, and disposal costs by replacing other sample containers. Each sterilized bag has a convenient write-on strip.



Stock #	Wire Style	Capacity	Size	Thickness	Packaging	Unit
Stand Up Bags						
486-3032	Round	4-oz	3"W x 7"L	2.5 mil	100 bg/bx	BX
486-3222	1 Flat, 1 Round	17-oz	6"W x 9"L	3 mil	100 bg/bx	BX
486-3007	1 Flat, 1 Round	34-oz	6"W x 15"L	4 mil	100 bg/bx	BX
486-3005	1 Flat, 1 Round	68-oz	7-½"W x 15"L	4 mil	100 bg/bx	BX
Flat Bags						
486-3012	Round	4-oz	3"W x 7-¼"L	2.25 mil	100 bg/bx	BX
486-3254	Round	10-oz	4-½"W x 9"L	2.25 mil	100 bg/bx	BX

Stand Up Bags

Features a gusset in the bottom allowing bag to stand completely on its own, and a white write-on stripe.



Stock #	Wire Style	Capacity	Size	Thickness	Packaging	Unit
486-3258	Round	4-oz	3"W x 7-¼"L	2.5 mil	500 bg/bx	BX
486-3259	Round	18-oz	4-½"W x 9"L	3 mil	500 bg/bx	BX
486-3261	Round	24-oz	6"W x 9"L	3 mil	500 bg/bx	BX
486-3361	1 Flat, 1 Round	36-oz	5"W x 15"L	4 mil	250 bg/bx	BX
486-3004	1 Flat, 1 Round	42-oz	6"W x 15"L	4 mil	250 bg/bx	BX
486-3451	1 Flat, 1 Round	69-oz	7-½"W x 15"L	4 mil	250 bg/bx	BX
486-3516	1 Flat, 1 Round	138-oz	15"W x 15"L	4 mil	100 bg/bx	BX

Specialty Bags

A broad range of specialty bags for all of your sampling needs! From blackout material for pharmaceutical and clinical needs, to the convenient pocket bag, these specialty bags have intentional design components to make sample collection in every industry convenient and more efficient.



Stock #	Capacity	Size	Thickness	Packaging	Unit
Whirl-Pak® Black Bags					
486-3472	4-oz	3"W x 7.25"L	2.5 mil	500 bg/bx	BX
486-3418	18-oz	3"W x 7.25"L	2.5 mil	500 bg/bx	BX
486-3024	55-oz	7.5"W x 12"L	4.0 mils	500 bg/bx	BX
Whirl-Pak® Scoop Bag					
486-3990	18-oz, 2-oz scoop	4.5"W x 9"L	2.5 mil	50 bg/bx	BX
Pocket Bag					
486-3257	24-oz	6"W x 9"L (Pocket Measures 5-3/8"W x 5-5/8"L)	2.5 mil	500 bg/bx	BX

Nasco Meat/Poultry Carcass Sampling Kit

Kit contains (2) disposable templates, (1) 10 x 10 cm for meat, (1) 5 x 10 cm for poultry, 25 mL of buffered peptone water, polyethylene gloves, and a sterile Whirl-Pak® Speci-Sponge® bag. 25 tests/kit.



Stock #	Unit
486-3327	KT

Nasco Poultry Rinse Bag

Use these polyethylene bags following USA instructions for poultry sampling and testing for E.coli. They are sealed at the top to maintain sterility and perforated for easy opening. Holds small turkeys, chickens, and other similar size poultry.



Stock #	Size	Thickness	Packaging	Unit
486-3030	15"W x 20"L	2.0 mil	250 bg/bx	BX

Plain Blender Bags

Designed for quick testing and disposable for samples that do not have to be retained. These bags have a perimeter seal and are sealed at the top. Perforated for easy opening and to protect sterility, which allows for separate handling of each bag.

Stock #	Capacity	Size	Thickness	Packaging	Unit
486-3064	55-oz	7-1/2"W x 12"L	3.0 mil	1,000 bg/bx	BX
486-3192	184-oz	15"W x 20"L	4.0 mil	250 bg/bx	BX



Locking Closures

Handy, cost-effective locking pipes provide an air and watertight closure for bags without traditional tape and wire closure. Autoclavable. Yellow pipe is 9"L, white pipe is 7-3/4"L.



Stock #	Capacity	Packaging	Unit
486-3459	55-oz	50/pk	PK

Round Bottom Seal

Designed to minimize sample fragments getting caught in the corners of the bag during blending.



Stock #	Capacity	Size	Thickness	Packaging	Unit
486-3239	52-oz	7"W x 13"L	4.0 mil	500/bx	BX

Sludge Judge®

Designed to take accurate readings of settleable solids, 5% or less, in a variety of liquids, to any depth. Ideal for sewage treatment plants, chemical plants, food processing facilities, or anywhere that accurate sample levels of settleable solids in noncaustic materials are needed.

486-3247



486-3041



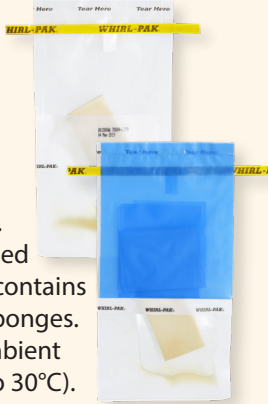
Stock #	Description	Size	Unit	Stock #	Description	Size	Unit
The Sludge Judge (Complete Unit)				The Sludge Judge Ultra-Super Strong (Replacement Parts)			
486-3247	Sludge Judge Water Core Sampler	15'L x 3/4" Dia	EA	486-3033	Middle Section Extension	5'L	EA
The Sludge Judge (Replacement Parts)				The Sludge Judge II (Complete Unit)			
486-3985	Top Extension	5'L x 3/4" Dia	EA	486-3041	Sludge Judge II	15'L x 1-1/4" Dia	EA
486-3986	Middle Extension	5'L x 3/4" Dia	EA	The Sludge Judge II (Replacement Parts)			
486-3987	Bottom Section w/ Valve		EA	486-3043	Top Section with Rope	5'L	EA
The Sludge Judge Ultra-Super Strong (Complete Unit)				486-3042	Section Extension	5'L	EA
486-3029	Sludge Judge Ultra 3 Piece Unit	15'L x 3/4" Dia	EA	486-3040	Bottom Section w/ Valve	5'L	EA
The Sludge Judge Accessories				The Sludge Judge Accessories			
				486-3248	Carrying Case	5'L	EA
				486-3044	Cleaning Brush	6'L x 1-1/4" Dia	EA

486-3029



Polyurethane Sponge Bags

Each sponge is packed in a sealed write-on bag and is hydrated with 10 mL of HiCap™ Neutralizing Broth. Terminally gamma processed to guarantee sterility. Box contains five foil pouches with 20 sponges. Two-year shelf-life with ambient storage at 36° to 86°F (2° to 30°C). 100 bags/box.



Nelson-Jameson, Inc.
2400 East Fifth Street
Marshfield, WI 54449

CHANGE SERVICE REQUESTED

PRSR STD
U.S. Postage
PAID
Marshfield, WI
Permit No. 558

Stock #	Capacity	Size	Thickness	Unit
---------	----------	------	-----------	------

Without Gloves

486-3025	18-oz	4-½"W x 9"L	2.5 mil	BX
486-3878	24-oz	6"W x 9"L	2.5 mil	BX

With Sterile Gloves

486-3881	18-oz	4-½"W x 9"L	2.5 mil	BX
----------	-------	-------------	---------	----

Looking for additional Sampling Supplies?

Nelson-Jameson is your source for sampling containers and vials, collection tools, racks, and more!

NJ613-21

Whirl-Pak® Speci-Sponge® (Hydrated)

Cellulose sponge, hydrated with 10 mL of neutralizing buffer. The buffer will neutralize surface sanitizers, including quaternary ammonium compounds, phenolics, iodine preps, chlorine preps, mercurials, formaldehyde, and glutaraldehyde. Diluent has a 24-month shelf life from the date of manufacture. Neutralizing buffer contains monopotassium phosphate, sodium thiosulfate, and aryl sulfonate complex.

Stock #	Capacity	Size	Thickness	Packaging	Unit
---------	----------	------	-----------	-----------	------

Without Gloves

486-3422	18-oz	4-½"W x 9"L	2.5 mil	100 bg/bx	BX
----------	-------	-------------	---------	-----------	----

With Sterile Gloves

486-3423	18-oz	4-½"W x 9"L	2.5 mil	100 bg/bx	BX
----------	-------	-------------	---------	-----------	----



Whirl-Pak® Speci-Sponge® (Dry)

Includes a sterile, size large polyethylene glove attached in a bottom compartment.

Stock #	Capacity	Size	Thickness	Packaging	Unit
---------	----------	------	-----------	-----------	------

486-3189	15-oz	4-½"W x 9"L	2.5 mil	100 bg/bx	BX
----------	-------	-------------	---------	-----------	----

486-3993	55-oz	7-½"W x 12"L	4.0 mil	400 bg/bx	BX
----------	-------	--------------	---------	-----------	----

Perfect For Use With Homogenizer Blenders

486-3392	18-oz	4-½"W x 9"L	2.5 mil	100 bg/bx	BX
----------	-------	-------------	---------	-----------	----



1-800-826-8302 • nelsonjameson.com
sales@nelsonjameson.com

