

# REVEAL<sup>®</sup> 3-D FOR PEANUT

PLEASE READ KIT INSTRUCTIONS COMPLETELY BEFORE PERFORMING TEST.



## Materials provided:

- 10 orange test devices
- 10 sample tubes and caps
- 10 sachets of Type 9 extraction buffer
- 10 sterile swabs
- 1 bottle swab wetting solution

## Materials required but not provided (for food extraction only):

- 8504 3-D Food Buffer
- 9381 50 mL graduated tubes

**Product number: 901041L**

**Rinse/Food:** 5 ppm peanut

**Swab:** 3–4 µg/100 cm<sup>2</sup> peanut

**Testing time:** 5 minutes

**Approvals:** AOAC RI 111901

Call 800.234.5333 to order or visit [NEOGEN.com](http://NEOGEN.com)

## Rinse Sampling



1 Open Type 9 extraction buffer sachet and add to a sample tube.



2 Add 0.25 mL of sample to the sample tube.

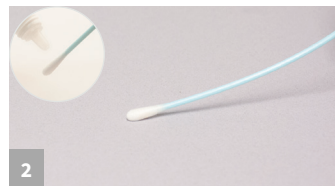


3 Secure cap and shake for 1 minute. Proceed to Rinse/Swab Testing step #1.

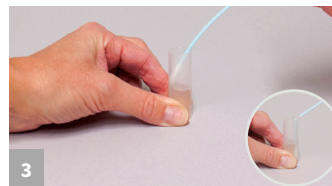
## Swab Sampling



1 Open Type 9 extraction buffer sachet and add to a sample tube.



2 Gather the sample. For dry surfaces moisten with swab wetting solution. Do not premoisten for wet surfaces.



3 Return the swab to the extraction buffer and break off into the tube.

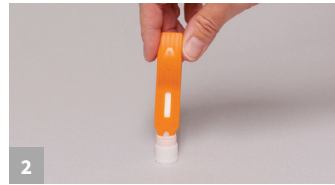


4 Secure cap and shake for 1 minute. Proceed to Rinse/Swab Testing Step #1

## Swab/Rinse Testing



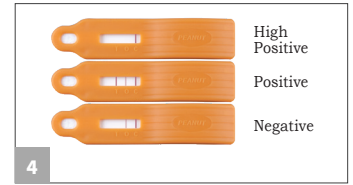
1 Remove the lid and fill with liquid from the tube.



2 Dip the Reveal 3-D device into the liquid within the lid, ensuring the liquid saturates the cavity.



3 When the liquid is seen running up the test window, place the device on a flat surface. Allow the test to develop for 5 minutes.



4 Interpret the results.

## Food Sample Extraction & Testing



1 Add 20 mL (18 mL for liquid samples) of Reveal 3-D Food Buffer into 50 mL tube.



2 Add 2 g (2 mL for liquid samples) of sample to tube



3 Secure cap and shake for 1 minute.



4 With the tube tilted at approximately a 45 degree angle, dip the device into the tube; ensure that the cavity is saturated with the liquid. Move to steps 3–4 of previous section.

