

REVEAL[®] 3-D FOR SOY ALLERGEN

PLEASE READ KIT INSTRUCTIONS COMPLETELY BEFORE PERFORMING TEST.



Materials provided:

- 10 beige test devices
- 10 sample tubes and caps
- 10 sachets of Type 8 extraction buffer
- 10 sterile swabs
- 1 bottle swab wetting solution

Materials required but not provided (for food extraction only):

- 8504 3-D Food Buffer
- 9381 50 mL graduated tubes

Product number: 902093K

Rinse/Food: 5 ppm soy

Swab: 2µg/100 cm² soy

Testing time: 5 minutes

Call 800.234.5333 to order or visit NEOGEN.com

Rinse Sampling



1 Tear or cut Type 8 extraction buffer sachet. Fold corner to create a funnel and add to tube.



2 Add 0.25 mL of sample to the sample tube.

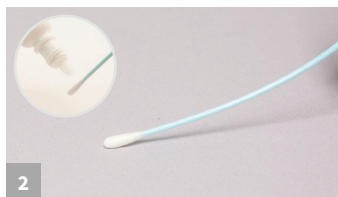


3 Secure cap and shake for 1 minute. Proceed to Rinse/Swab Testing step #1

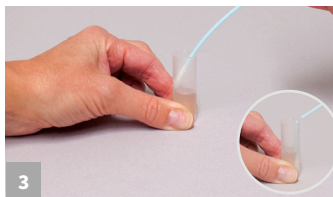
Swab Sampling



1 Tear or cut Type 8 extraction buffer sachet. Fold corner to create a funnel and add to tube.



2 Gather the sample. For dry surfaces moisten with swab wetting solution. Do not premoisten for wet surfaces.



3 Return the swab to the extraction buffer and break off into the tube.



4 Secure cap and shake for 1 minute. Proceed to Rinse/Swab Testing Step #1

Rinse/Swab Testing



1 Remove the lid and fill with liquid from the tube.



2 Dip the Reveal 3-D device into the liquid within the lid, ensuring the liquid saturates the cavity.



3 When the liquid is seen running up the test window, place the device on a flat surface. Allow the test to develop for 5 minutes.



4 Interpret Results.

Food Sample Extraction & Testing



1 Add 20 mL (18 mL for liquid samples) of Reveal 3-D Food Buffer into 50 mL tube.



2 Add 2 g (2 mL for liquid samples) of sample to tube.



3 Secure cap and shake for 1 minute.



4 With the tube tilted at approximately a 45 degree angle, dip the device into the tube; ensure that the cavity is saturated with the liquid. Move to steps 3–4 of previous section.



Reveal[®] 3-D for Soy Allergen

Product Number: 902093K

Reveal[®] 3-D for Soy is a simple, quick, and sensitive lateral flow test capable of detecting soy residue in clean-in-place rinses and from environmental swabs. In addition, Reveal 3-D Soy now offers an extraction method for testing food products and ingredients. This method is universal across all product types, is simple to follow, and gives rapid results.

The unique hand held device with 3-line readout uses a control line to confirm the method has been performed successfully, and two further lines to differentiate between no detectable amount, low and high levels of detection.

Features:

- 5 minute test time
- 1 minute extraction for food samples.
- 10 tests per kit

Fully Validated

Reveal 3-D for Soy Allergen has undergone a rigorous validation process, investigating the sensitivity, specificity, cross-reactivity and robustness of the assay. Contact your NEOGEN representative for a copy of the validation report.

