

Pest Control Solution Guide



Pest Control Throughout Your Facility

A pest control plan is necessary within all food processing facilities. The key to controlling pests is through prevention, defense, and management measures. This solution guide highlights the most common pest problems food processors face, and the top products Nelson-Jameson has available to help you create your own pest control program.

Pest Problem—Insects



Know The Calling Signs:

- Damaged food product
- Visual sightings
- Droppings
- Egg capsules

Survey:

Thorough inspections of the exterior and interior of a facility are needed to determine if there are any current infestations of insects. Areas to include but not limited to are:

External:

- Receiving and shipping docks
- Waste disposal areas
- Roof areas
- Silos, doors, windows, and ventilation intakes
- Raw material receiving areas

Internal:

- Floor/wall junctions
- Drop ceilings
- Processing areas
- Warehouse material and racking
- Locker rooms
- Packaging storage and equipment

Insect Light Traps:

Proper pest control equipment is only as good as you allow it to be. Here are some helpful tips to ensure you are getting the most use out of your light traps:

- Use a trap that is best for the area it will reside in.
- Change out your bulbs according to manufacturer recommendations.
- Shatter protection must be in place where food or packaging may become contaminated from broken glass.
- Glueboard traps must be changed/replaced once the glue loses its tackiness.

Make sure the light trap is placed in a manner that will maximize insect capture without:

- Interfering with facility operations.
- Being visible from the exterior.
- Being likely to attract insects to open food.

**Visit our website for our full
line of Pest Control Products.**



Guardian® Wall Mount Units

INSECT-O-CUTOR

- Equipped with energy efficient lamps, these sand-colored, galvanized steel units are economical wall mount options.
- Includes (1) unfiltered black light (BL) bulb and (1) glueboard.
 - GB36 is equipped with universal voltage lamp ballasts, 110 to 277-volt, 50/60 Hz.
 - GB18 is dedicated to 110/120-volt, 60 Hz.

Stock #	Mfg #	Size	Lamps	Unit
343-6320	GB18	18-1/4"W x 5-1/4"D x 5-1/4"H	18" BL	EA
343-6335	GB36	36-1/4"W x 5-1/4"D x 5-1/4"H	36" BL	EA

Replacement Black Light Bulbs

INSECT-O-CUTOR

Shat-R-Shield®
PLASTIC-COATED, SHATTERPROOF LAMPS & LIGHTING PRODUCTS

Black lights are most effective when new, and lose their ability to attract insects after 7,000 hours (9 months) of continuous use due to phosphor degradation.

Stock #	Description	Size	Packaging	Unit
Unfiltered Insect-O-Cutor® Bulbs				
343-6405	Black Light White	18"	6/ca	CA
343-6425	Black Light White	36"	6/ca	CA
Blue-Filtered Insect-O-Cutor® Bulbs				
343-6408	Black Light Blue	18"	6/ca	CA
343-6428	Black Light Blue	36"	6/ca	CA
Unfiltered Shat-R-Shield® Bulbs				
601-2239	Black Light White	18"	6/ca	CA
601-2238	Black Light White	36"	24/ca	CA
601-2247	Black Light White	48"	15/ca	CA
Blue-Filtered Shat-R-Shield® Bulbs				
601-2234	Black Light Blue	18"	6/ca	CA
601-2237	Black Light Blue	36"	6/ca	CA
601-2235	Black Light Blue	48"	6/ca	CA

PROZAP® LD-44Z Aerosol Insecticide

- Professional strength insecticide authorized for use in dairy, beef, and other livestock operations.
- Features 0.5% synthetic pyrethrins for maximum killing power.
 - Kills all common flies, mosquitoes, and gnats.

Stock #	Description	Packaging	Unit
357-6247	25-oz Can	6 cn/ca	CA



INSECT-O-CUTOR

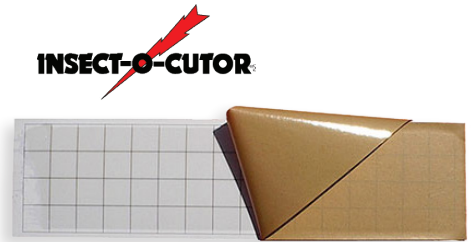
Guardian® Portable Units

- Stainless steel or aluminized steel construction and carrying handle make the portable model durable, yet easy to relocate.
- Features chrome-plated safety guards. Also available in aluminized steel.
 - Can be placed on a work surface or mounted on wall or ceiling.
 - Includes (2) unfiltered black light (BL) bulbs and (2) glueboards.
 - One filtered black light blue (BLB) bulb can be purchased and put in place of one unfiltered (BL) bulb for increased variety of insect attraction.
 - Equipped with universal voltage lamp ballasts, 110 to 277-volt, 50/60 Hz.

Stock #	Mfg #	Size	Lamps	Unit
343-6550	GBP182S	21-1/2"W x 5-1/4"D x 9-1/2"H	18" BL	EA
343-6552	GBP362S	39-1/2"W x 5-1/4"D x 9-1/2"H	36" BL	EA

Replacement Glueboards

For use with Guardian® units.



Stock #	Size	Packaging	Unit
343-6604	5" x 17"	4/pk	PK
343-6412	5" x 17"	12/pk	PK
343-6605	5" x 22"	4/pk	PK
343-6512	5" x 22"	12/pk	PK

PROZAP® Aqueous Fly Spray

Control numerous insects with this water-based insecticide designed for food processing plants and dairies.

- Contains 0.1% pyrethrins and leaves no oily residue.
- May be sprayed or fogged. Sprayers and foggers sold separately.
- Can also be used in homes, restaurants, and applied to livestock.

Stock #	Description	Packaging	Unit
106-6015	1-gal Bottle	4 bo/ca	CA



Pest Problem—Insects

Battery Operated UV Detection Lamp

A portable 12-volt battery-operated long wave UV black light is ideal for hundreds of applications.

- Strong, lightweight durable housing.
- Requires (2) 6-volt batteries (not included).
- Does not include a separate filter, its BLB tube includes the filter.

Stock #	Description	Unit
694-2010	UV Lamp, 12 V	EA



DURACELL® PROCELL® Battery

Manufactured to rigid specifications to meet some of the highest standards of durability and longevity that professional users demand and expect, the Procell outperforms the rest.

- Increased battery life for longer service and lower operating expenses.
- Delivers outstanding performance with a 7-year freshness guarantee backed up with date coding.
- Reliable operations in temperatures between -4° to 129°F.
- Does not contain Mercury, so there are no disposal issues.

Stock #	Description	Unit
192-2103	6 V PROCELL	EA



3M™ Tour-Guard V Series Safety Eyewear

Protect your eyes from harmful UV rays with these spectacles, made of impact resistant polycarbonate.

- Integral side shields offer full coverage and extra protection.
- Meets the Impact-Rated Protector requirement of the ANSI-ISEA Z87.1-2020 Standard.
- Polycarbonate lens absorbs 99.9% of harmful UVA and UVB rays.

Stock #	Unit
196-2627	EA



PROZAP® CT-75 Dairy Aerosol Insecticide

Provides immediate and effective control of insects. For use as a fogger in milking parlors, milk rooms, barns, food processing areas, and in stored product spaces.

- Features 0.7% pyrethrins for maximum killing power.
- Controls house flies, horn flies, stable flies, gnats, mosquitoes, small flying moths, and other insects.

Stock #	Description	Packaging	Unit
106-6025	26-oz Can	6 cn/ca	CA

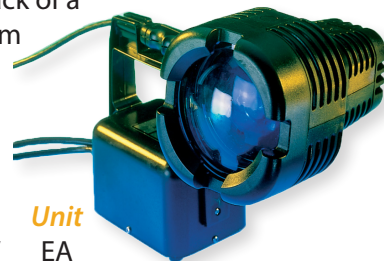


Electric UV Lamp

A cool-running, high-intensity, 100 watt long wave inspection lamp.

- The bulb, coupled with a special UV filter, makes it capable of fluorescing the back of a 6000-gallon holding tank from the entrance port.
- 8' extension cord to detach head from base.
- 8' wall cord included.

Stock #	Description	Unit
694-2100	UV Lamp, 115 V	EA
694-2110	UV Filter Lens	EA



Pest Problem—Birds

Stainless Steel Spikes

Stop birds from perching or landing with these physical barriers that eliminate their ability to land and perch.

- 100% effective and safe.
- Stainless steel—won't corrode or decay.
- Protects surfaces from corrosive droppings.
- 10-year warranty against material defects and workmanship.
- Plastic spikes also available.

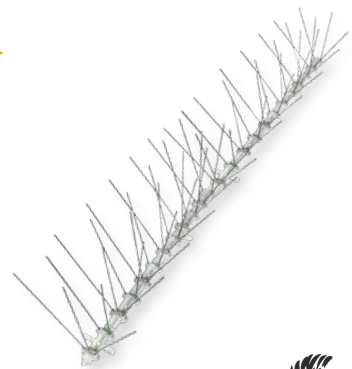
Stock #	Size	Unit
---------	------	------

Ex-Wide Kit—7.5"W

342-1005	10'	KT
342-1006	100'	KT
342-1007	24'	KT

Slim Kit—2.5"W

342-1014	10'	KT
342-1015	100'	KT
342-1016	24'	KT
342-1017	50'	KT

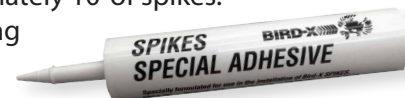


Bird Spike Special Adhesive

Ensure proper bonding of your spike installation with this extremely durable, weatherproof nonflammable adhesive.

- Works on a wide range of materials and is faster than using screws or ties.
- One tube secures approximately 10' of spikes.
- Use with a standard caulking gun.

Stock #	Unit
342-1024	EA



420CL Repeater™ Multiple Catch Mouse Trap

Perfect for facilities that need to catch live mice without bait or poisons.

- Clear lid.
- Catch up to 30 live mice.

Stock #	Description
202-6011	420CL Repeater Metal Mouse Trap



FAMILY OWNED AND OPERATED
JT EATON
SINCE 1932

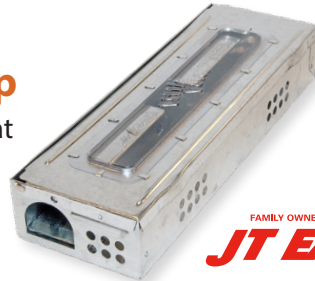
Unit
EA

423CL Little Pete® Slim Multiple Catch Mouse Trap

A slimmer model of the Repeater™. Great for small areas that mice love to hide out in.

- Clear lid.
- Catch up to 10 live mice.

Stock #	Description
202-6012	423CL Little Pete Metal Slim Mouse Trap



FAMILY OWNED AND OPERATED
JT EATON
SINCE 1932

Unit
EA

Stick-Em Rodent Trap

Glueboards are easy to use, do not require setup and due to their slim profile can fit practically anywhere.

Stick-Em Trap

- 5" x 7" plastic tray.
- No-flowing or drying glue.

Glueboard Insert for Mouse Traps

- For use with 420CL and 423CL mouse traps.
- Easy change design.
- Dimensions: 10"L x 4"W.

Stock #	Description
202-6010	Stick-Em Rodent Trap, 2/pk
202-6013	Glueboard Insert, to use w/ Mouse Boards, 72/bx



FAMILY OWNED AND OPERATED
JT EATON
SINCE 1932

Unit
PK
BX

Insect Barrier Doors

Achieve fresh air flow in your plant without letting in insects, birds, and other pests! An ideal solution for loading docks, personnel doors or any open areas where flying insects are a nuisance. Available in manual roll-up, automatic roll-up, manual sliding, and strip doors.

Call our equipment product specialists today to order your custom insect barrier doors!



Know The Calling Signs:

- Droppings/urine
- Bite/gnaw marks on product or packaging
- Tracks
- Visual sightings

Survey:

Surveillance is key to ensuring pest control is being maintained.

External:

- Sightings, harborages, or other evidence of infestation identified and recorded.
- Identify areas likely to have an infestation, such as open trash and standing water.
- Open doors, gaps in buildings, dumpsters.
- Debris in dock, and off-loading areas.
- Adjacent properties with long grass, and weeds.
- Low clearance areas, 24" or less, with no gravel around the outside of the building.
- Neighborhood with issues of infestations.

Internal:

- Open doors, gaps under doors or in walls, anything that would permit rodent access.
- Debris or clutter that could harbor infestations.
- Lack of 18" inspection aisle along walls.
- Spillage of food source that could attract an infestation.
- Storage locations and practices that could harbor an infestation.

Placing and Spacing:

- An initial spacing of 50 to 100' is suggested for exterior areas.
- Monthly assessments will help determine the amount of traps needed, spacing, and locations.
- An initial spacing of 20 to 40' is suggested for interior areas.
- The inspection aisle can have traps within it.
- Weekly assessments will also help determine where to pinpoint traps to ensure maximum access.

Safety Tips and Tricks for Pest Control Chemical Usage

Use the appropriate personal protective equipment.

- Disposable protective coveralls will ensure your clothing and skin is protected when handling chemicals.
- A properly fitted respirator will protect from the dangerous vapors the chemicals emit.
- Goggles keep your eyes safe from any splashes, vapor fumes, or other accidents when dispensing chemicals.
- Gloves will protect your hands from chemical burns or irritations.
- Closed-toe shoes are a good suggestion when handling chemicals.
- Follow any other protective requirements on the chemical labels or from your facilities safety standards.

Safely and correctly use pesticides.

- Use baits as first line of defense against rodents before chemical sprays.
- Read through the products label instructions and safety warnings.
- Ready to use products require no mixing making them easier to use.
- Read the label for proper disposal guidance. Most communities have hazardous waste collection areas.

Do not use outdoor chemicals indoors.

- They are often dangerous and not intended for indoor use.

Do not transfer chemicals to other containers.

- All chemicals should remain in their original containers where the instructions and warning labels are located.

Looking for Pest Control Chemicals?

Give us a call or visit our website for more Pest Control Chemical options.

Using appropriate personal protective equipment (PPE) is an essential part of any Pest Control Program. PPE will ensure your clothing and skin are protected when handling chemicals. Nelson-Jameson has a full line of safety and PPE products, including:

Head & Face Protection

- Headgear/Faceshields
- Safety Glasses
- Safety Goggles



Gloves

- Chemical Resistant
- Disposable



Respirators

- Disposable Respirators
- Reusable Respirators
- Respirator Cartridges



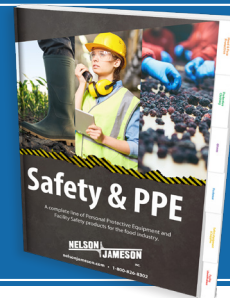
Shoe Covers

- Chemical Resistant, Disposable Shoe Covers



Don't see what you need?

Request a copy of our
Safety & PPE Catalog today!



NJ615-21