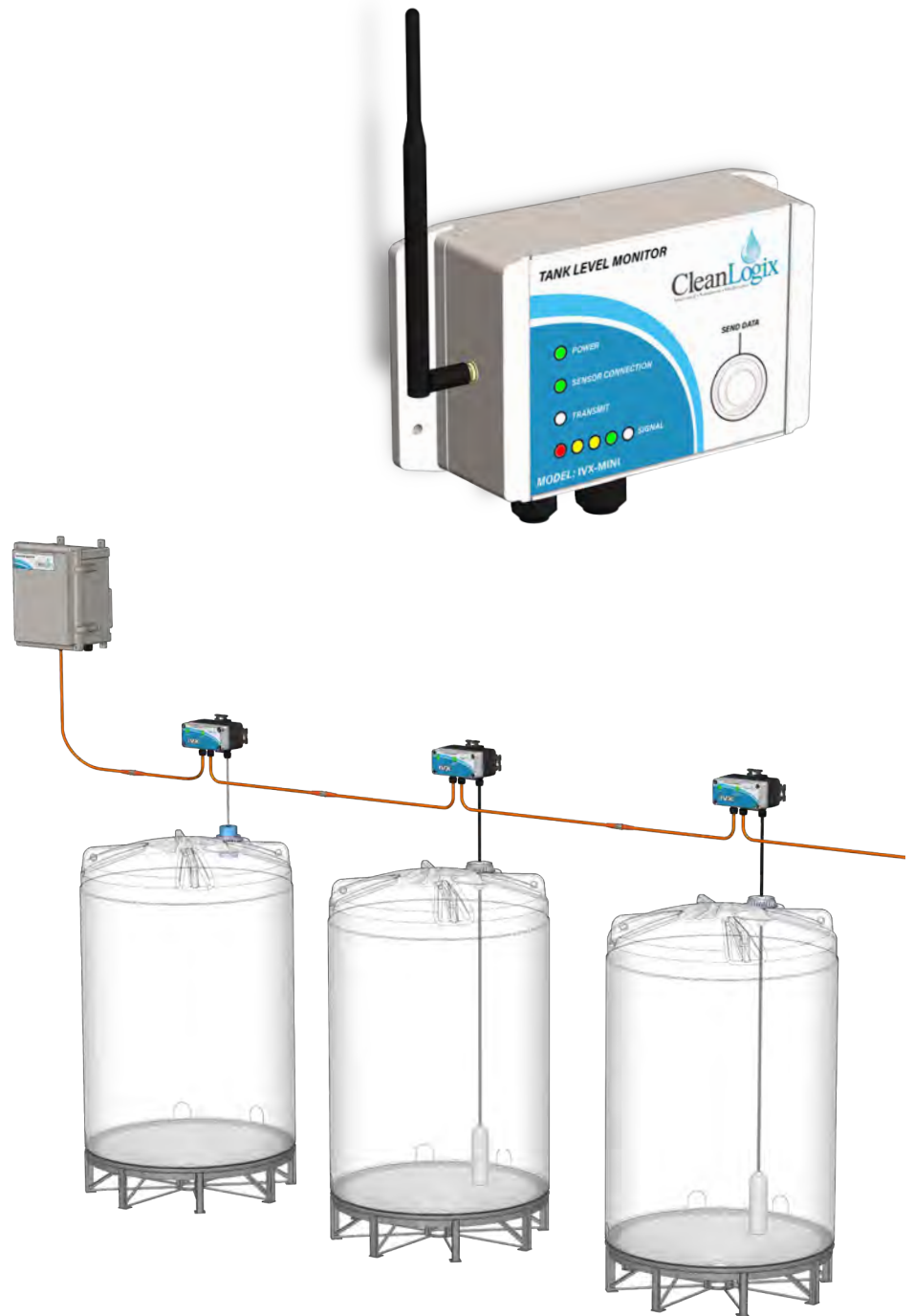


IVX

IVX

INVENTORY
LOGIX

—




CleanLogix
Integrated • Sanitation • Intelligence

OVERVIEW

Inventory Logix tank level monitoring systems track container volume levels, predict consumption, and send alerts when levels get below a certain volume. IVX controllers can be used with a variety of different level sensors, including differential pressure and ultrasonic sensors, to continuously monitor the level of any size or shape of container. Signal Converters communicate the sensor's milliamp readings to the IVX controller. Converters are compatible with any 4-20mA sensor and can be used with pre-existing units, if desired.

Controllers synchronize data every 10 minutes to Clean Intel, an Online interface, where it can easily be viewed or exported in custom reports, at any time. Clean Intel reduces the need for an account manager to physically travel to a location to check chemical inventory, saving both time and money. It also simplifies the scheduling of bulk chemical deliveries by estimating your refill date based on previous consumption data.

EASILY TRACK LEVEL
DATA REMOTELY

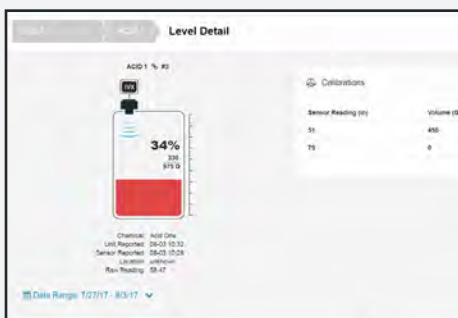
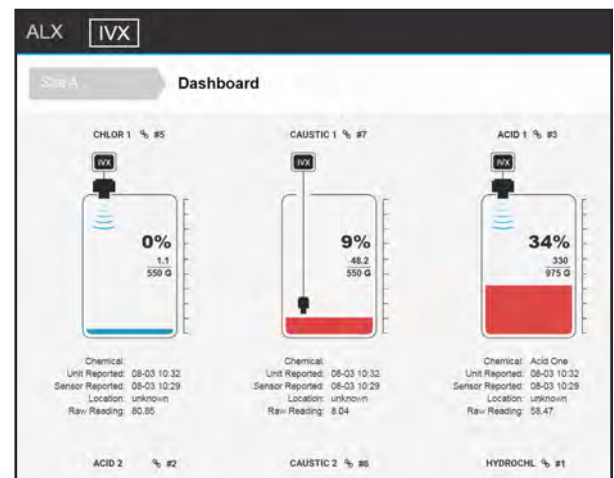
PRESSURE &
ULTRASONIC SENSOR
COMPATIBILITY

WIRED CONNECTIONS
FOR CONSISTENT DATA
TRANSMISSION

SUPPORTS ETHERNET
& CELLULAR DATA
NETWORKING

CleanIntel WEB REPORTING

- 24/7 access from your computer, tablet, or smartphone.
- Manage users, multiple sites, and containers from one screen.
- 1 Subscription per Controller to monitor up to 16 sensors.
- Interactive graphs with dispense history and order predictions.
- Custom alarms to send email and SMS text alerts.
- Consumption email reports to be sent daily, weekly, or monthly.



LIVE LEVEL DATA



INTERACTIVE GRAPHS

The screenshot shows the 'New Subscription' page. It includes a checkbox for 'Receive an alert whenever a container triggers an alarm'. Below this are fields for 'Type' (set to 'InventoryAlarmSubscription'), 'Delivery Method' (set to 'SMS'), and 'Recipient' (set to '616-428-1200'). There are 'Cancel' and 'Save' buttons at the bottom.

CUSTOM REPORTS

CONTROLLERS & FEATURES



IVX-MINI

The IVX-MINI features a built-in cellular modem that works with GSM based networks such as AT&T. LED indicator lights show signal strength and sensor status.



IVX-BETA

The IVX-BETA plugs into plant's Ethernet network or can be used with a Verizon cell router (*sold separately: CELL-POE*)

Compatible with IVX-MINI and IVX-BETA controllers.



Reads 4-20mA signals from sensor and relays level data to IVX controller via a serial connection. Green LED's indicate power and sensor connection status

Up to 16 sensors per IVX controller and Online subscription

IP69K rated serial cables daisy chain together for easy plug-and-play installation.

IVX Ultrasonic Sensor Assemblies come pre-wired with swiveling plug attached. Available in 2 depth ranges:

4 in. - 7 ft.: **IVX-US-7-V2**
12 in. - 13 ft.: **IVX-US-13-V2**

Swiveling 2" NPS plugs install and secure sensors directly to containers.

If necessary, sensor cables can be extended using the **IVX-JUN** junction box.



IVX Pressure Sensor assemblies come pre-wired with swiveling plug attached. Up to 22ft. Depth range with kalrez seal, available in 3 materials:

Stainless Steel: **IVX-PT-SS-V2**
Polypropylene: **IVX-PT-PP-V2**
PVDF: **IVX-PT-PVDF-V2**



PREMIUM SUPPORT

Whether it's finding the right product or supporting an already existing one, Clean Logix's customer service team will be there for you to ensure you have the support you deserve.

DURABLE PRODUCTS

Built to last even in the harshest environments. Clean Logix uses only the toughest and most reliable materials to ensure longevity and performance.

Distributed by:

NELSON JAMESON

INC.

800-826-8302 nelsonjameson.com

CUTTING EDGE TECHNOLOGY

Clean Logix is dedicated to providing the highest quality systems using state of the art technology. Our experienced engineers emphasize both function and excellence with each product they develop.

MADE IN THE U.S.A.