

TECHNICAL SPECIFICATIONS

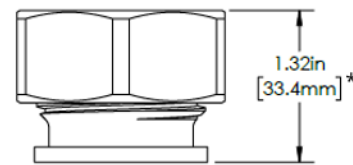
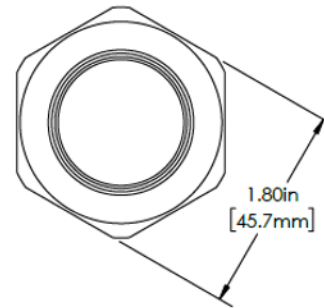
TruStream7 Sanitary Tank Inspection Port (with Hex Nut and Dust Cover) PN 212113



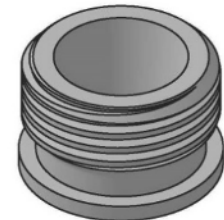
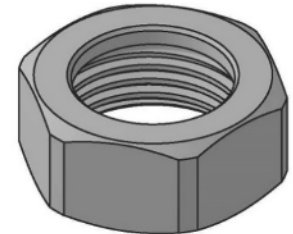
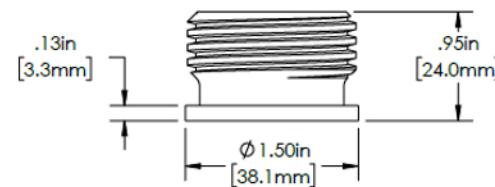
Material: 316L Stainless Steel / EN 1.4404
Roughness (Internal): Ra ≤ 20 µin. / Ra 0.5 µm.

Distributed by:

NELSON JAMESON
INC.
800-826-8302 nelsonjameson.com



*Measurement is with septum in place



Component Packaging	Part Number	Length	Width	Height	Shipping Weight
TruStream7	212113	4.75" / 120.7mm	4.25" / 108mm	2.25" / 57.2mm	1 lb. / 0.5 kg

Visit our website for instructions on:
Welding Instructions

651-501-2337 • sales@qualitru.com • QualiTru.com