

Chamber Brite™ - Powdered Autoclave Cleaner

Chamber Brite™



No Mess, No Hassles, No Measuring...

Chamber Brite powder is simply the easiest way to keep autoclaves clean and free of water deposit build-up. Designed specifically for steam sterilizers, Chamber Brite effectively cleans and descales the chamber, tubing and reservoir in minutes.

- Convenient, pre-measured packets
- Cleans chamber, tubing and reservoir
- Uses less storage space
- Replaces messy liquid cleaners

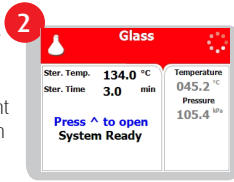


Chamber Brite™ - Powdered Autoclave Cleaner

*Cleaning Instructions: EL, EA, and ELV Autoclaves



Cleaning needs to be done on a COLD chamber. Open the door and spread the ChamberBrite™ in a straight even line along the bottom of the chamber, from back to front. Do not leave a pile of Chamber Brite in one spot

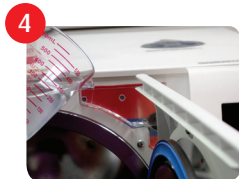


EL and ELV models: Select the Glass cycle.

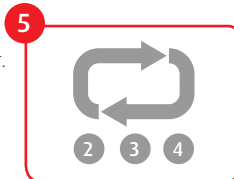
E & EA models: Select the Unwrapped cycle, start a cleaning cycle WITH WATER and NO DRYING CYCLE (134 °C for 3 minutes).



At the end of a cleaning cycle, open the chamber door and use the drain valve and drain hose to drain all of the water out of the reservoir into a pail. The Chamber Brite solution is in the waste water.



Refill the reservoir with clean steam distilled water.



Run a clean water cycle repeating steps 2, 3 & 4 BUT WITHOUT USING CHAMBER BRITE. This will remove any residue from the internal plumbing.



TURN THE AUTOCLAVE OFF AND ALLOW THE CHAMBER TO COOL. Once the chamber is cool, wipe the inside of the chamber and the water sensor at the rear with a damp cloth or sponge to remove any residue. Cleaning the dirt off the sides of the sensor is more important than the tip. The unit is now ready to sterilize.

For best results, clean autoclave every 20 cycles or once per week as needed. It is essential to follow the equipment manufacturer's directions for cleaning and maintenance. *For full instructions on how to use Chamber-Brite -follow the directions on the box.

*Cleaning instructions: Manual Autoclaves



Cleaning needs to be done on a COLD chamber. Open the door and spread the ChamberBrite™ in a straight even line along the bottom of the chamber, from back to front. Do not leave a pile of Chamber Brite in one spot



Make sure the water reservoir is filled with steam distilled water. Set temperature to 273°F (134°F). With the chamber door OPEN, turn the multivalve clockwise from "0" to "FILL WATER".



Water will begin to flow in from the back of the chamber. Monitor the flow until it gets to the indentation line at the front of the chamber.



Turn the multivalve to "STERILIZE" (OLDER models are labeled "STE") Close and lock the door



For Valuekave or any "MK" models, set timer to 12 minutes



For all other "M" models, set the timer to 30 minutes



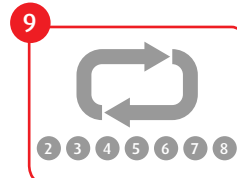
The pressure gauge will rise to 30psi and when the timer reaches "Zero" the bell will ring. Immediately turn the multivalve to "EXH+DRY" and the dirty water in the chamber will be forced out and back into the water reservoir



Once the pressure gauge reaches "ZERO", open the chamber door and use the drain valve and drain hose to drain ALL of the water out of the water reservoir into a pail. flush the reservoir with clean water. The Chamber Brite solution is in the waste water



Tighten the drain valve. Refill the water reservoir with clean steam distilled water



Repeat steps 2, 3, 4, 5, 6, 7 & 8 BUT WITHOUT USING CHAMBER BRITE.

This will remove any residue from the internal plumbing.



TURN THE AUTOCLAVE OFF AND ALLOW THE CHAMBER TO COOL. Once the chamber is cool, wipe the inside of the chamber with a damp cloth or sponge to remove any residue.

Distributed by:

NELSON JAMESON

800-826-8302 nelsonjameson.com

INC.

Tuttnauer
Your Sterilization & Infection Control Partners