



SMI Series

SHEL LAB Microbiological Incubators

SMI2 • SMI6 • SMI7 • SMI11 • SMI12





Ideal for Clinical, Analytical, and General Laboratory Applications

SHEL LAB Microbiological Incubator Series has been updated for optimum performance. Ranging in sizes from 2 to 11.7 cubic feet, the SMI Series is guaranteed to fit any workspace.

SMI Microbiological Incubators Features and Benefits



- 1. Safety certified CAN/CSA, UL, EN, IEC 61010, and compliant with CE.
- 2. USB data logging capabilities.
- 3. 7 inch capacitive touch screen.
- 4. Independent over temperature set point and operational control override for additional safety.
- 5. Side-mounted access port, 1.5" diameter (38 mm)
- 6. Stainless steel interior construction for long life operation and easy cleaning.
- 7. Condensed connection panel includes; 4-20 mA analog output, dry contact port, and USB A port.
- 8. Heated external doors prevent cold spots and maintain thermal uniformity.
- 9. Unique air-jacketed design provides excellent temperature uniformity of $\pm 0.5^{\circ}\text{C}$ at 37°C .
- 10. Interior chamber outlet (1-amp).
- 11. Sealed glass inner door allows for viewing without disturbing the critical growth atmosphere.



SMI Incubator Performance

SHEL LAB SMI Incubators are available in 100-120V or 220-240V configurations.

Heating - SMI Incubators rely on natural heat radiation for heating. These units can achieve ambient room temperature plus 8°C to 70°C.

Over Temperature Limit system - The OTL is a mechanical heating cutoff included with each incubator and operates independently of the incubator microprocessor temperature controller. The OTL helps safeguard the incubator by preventing runaway heating in the event of hardware failures or a sudden external heat spike.

Applications:

- Hematological Studies
- Microbiological Determinations
- Pharmaceutical Stability Assays
- Bacterial Culturing and Research
- Food Processing Quality Control
- Biochemical Studies

24 Month Limited
Warranty



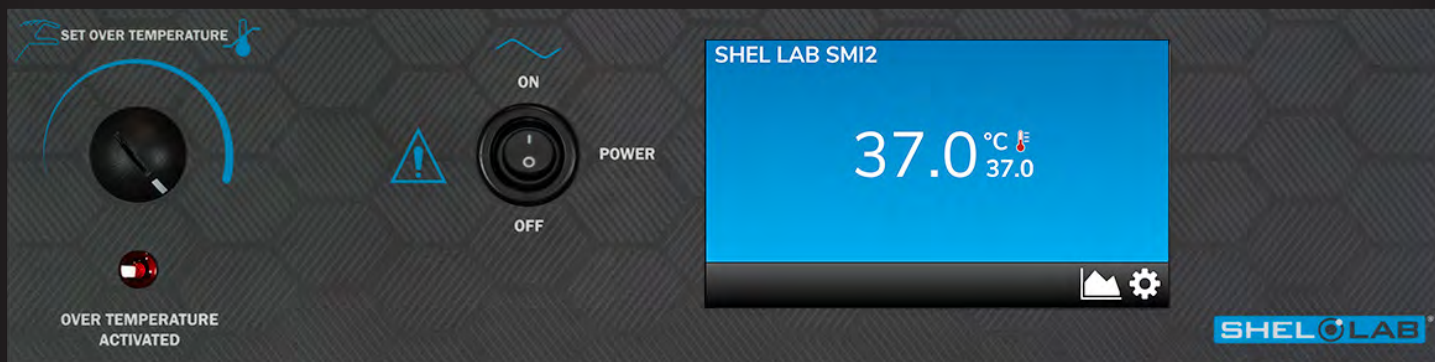
SMI12



SMI11

Touch Screen Controller for the SMI Series

Significantly updating SHEL LAB's line of products, the new 7 inch display provides advanced control functions. With on-screen graphing and real time data, the new SMI controller provides the highest levels of sample security and traceability.

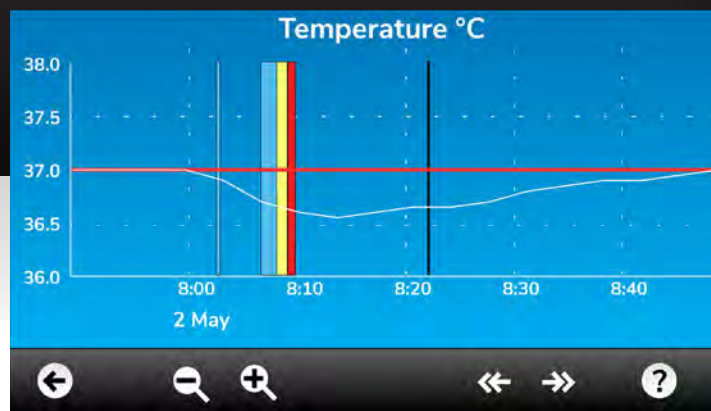


Touch Screen Controller Features

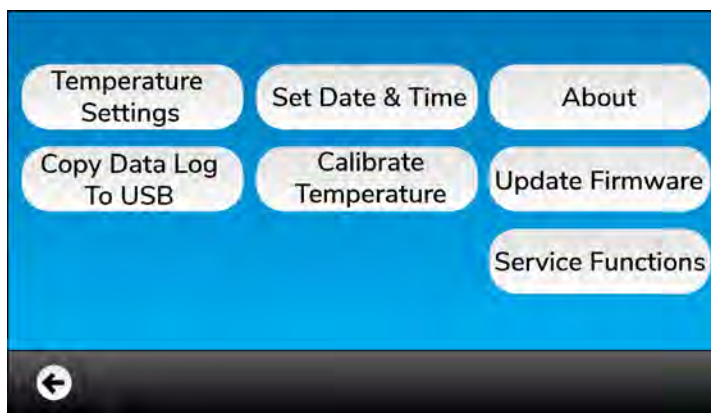
- Large, easy-to-read display screen • Data export via USB • Stores up to 5 years of log data
- Password locking capabilities • Data logged once per minute • Export in .CSV file
- Smart alarm: accounts for door openings and temperature set point changes before alarm • Temperature deviation alarm



Right Side Data Ports



On-screen graphing



Main menu screen

SMI Models



| SMI Model Part ID 100-120V [Part ID 220-240V] | SMI2 SLM222 SLM222-E | SMI6 SLM622 SLM622-E | SMI7 SLM722 SLM722-E | SMI11 SLM1122 SLM1122-E | SMI12 SLM1222 SLM1222-E |
|---|---|---|---|--|--|
| Interior Chamber Volume | 2.0 cu. ft / 56.3 L | 5.9 cu. ft / 166 L | 6.5 cu. ft / 184 L | 10.9 cu. ft / 309 L | 11.7 cu. ft / 332 L |
| Interior Dimensions (w x d x h) | 15.0 x 15.0 x 15.2 in 381 x 381 x 386 mm | 19.5 x 20.0 x 26.0 in 495 x 508 x 660 mm | 23.7 x 24.0 x 20.0 in 602 x 610 x 508 mm | 36.2 x 20.0 x 26.0 in 920 x 508 x 660 mm | 19.5 x 20.0 x 26.0 in* 495 x 508 x 660 mm |
| Exterior Dimensions (w x d x h) | 21.3 x 22.3 x 26.0 in 541 x 566 x 660 mm | 25.3 x 27.3 x 38.0 in 643 x 693 x 965 mm | 30.0 x 31.0 x 32.0 in 762 x 787 x 813 mm | 42.0 x 27.0 x 38.0 in 1067 x 686 x 965 mm | 25.3 x 27.3 x 76.0 in 643 x 693 x 1930 mm |
| Unit Weight | 83 lb / 37.6 kg | 158 lb / 71.7 kg | 162 lb / 73.5 kg | 195 lb / 88.5 kg | 316 lb / 143.3 kg |
| Shipping Weight | 117 lb / 53 kg | 187 lb / 85 kg | 198 lb / 90 kg | 300 lb / 136 kg | 550 lb / 250 kg |
| Incubator Performance | | | | | |
| Temperature Range | Ambient + 8°C to 70°C | Ambient + 8°C to 70°C | Ambient + 8°C to 70°C | Ambient + 8°C to 70°C | Ambient + 8°C to 70°C |
| Temperature Stability | (+/-) 0.1°C @ 37°C | (+/-) 0.1°C @ 37°C | (+/-) 0.1°C @ 37°C | (+/-) 0.1°C @ 37°C | (+/-) 0.1°C @ 37°C* |
| Temperature Uniformity | (+/-) 0.5°C @ 37°C | (+/-) 0.5°C @ 37°C | (+/-) 0.5°C @ 37°C | (+/-) 0.5°C @ 37°C | (+/-) 0.5°C @ 37°C* |
| Electrical | | | | | |
| Amperage | 4.5 Amps / 3.0 Amps | 6.0 Amps / 4.0 Amps | 6.5 Amps / 5.0 Amps | 10.0 Amps / 5.0 Amps | 6.0 Amps / 4.0 Amps* |
| Misc. | | | | | |
| Shelves | 2 Standard, 6 Total | 3 Standard, 12 Total | 2 Standard, 9 Total | 6 Standard, 12 Total | 6 Standard, 12 Total |
| Maximum Weight per Shelf | 35 lb / 15.9 kg | 35 lb / 15.9 kg | 35 lb / 15.9 kg | 35 lb / 15.9 kg | 35 lb / 15.9 kg* |
| Permitted Total Load | 70 lb / 31.8 kg | 105 lb / 47.6 kg | 70 lb / 31.8 kg | 210 lb / 95.3 kg | 210 lb / 95.3 kg |

*Per Unit Chamber

We reserve the right to change specifications at any time



Site Preparation and Installation Guides

| | SMI2 | SMI6 | SMI7 | SMI11 | SMI12 |
|-------------------------|--------------|--------------|--------------|--------------|--------------|
| Wall Clearance, Sides | 4" (102 mm) | 4" (102 mm) | 4" (102 mm) | 4" (102 mm) | 4" (102 mm) |
| Wall Clearance, Roof | 2" (51 mm) | 2" (51 mm) | 2" (51 mm) | 2" (51 mm) | 2" (51 mm) |
| Door Swing | 26" (660 mm) | 26" (660 mm) | 30" (762 mm) | 26" (660 mm) | 26" (660 mm) |
| Access Port, Right Side | 1.5" (38 mm) | 1.5" (38 mm) | 1.5" (38 mm) | 1.5" (38 mm) | 1.5" (38 mm) |

SMI Microbiological Incubators Options and Accessories

| | SMI2 | SMI6 | SMI7 | SMI11 | SMI12 |
|---|---------|---------|---------|---------|---------|
| Caster Platform | 9000604 | 9000538 | 9000516 | 9000605 | 9000538 |
| Shelf Assembly, includes 1 shelf and 2 shelf slides | 9751335 | 9751336 | 9751337 | 9751338 | 9751336 |
| Extra Shelf, Max. Weight 50 lb (22 kg) | 5080758 | 5130523 | 5130518 | 5130687 | 5130523 |
| Extra Shelf Slide, 2 Required Per Shelf | 5081174 | 5081201 | 5081205 | 5081201 | 5081201 |

Options must be specified when ordering. Contact SHEL LAB for additional information.

Distributed by:



800-826-8302 nelsonjameson.com

SHEL LAB is a Sheldon Manufacturing Brand. PN #0740610 | 7/19

