

NEW

ONGUARD 

▲ DURAPRO®



REVOLUTIONARY SAFETY & COMFORT

Sloped comfort top rim prevents chafing and reduces discomfort when walking, bending and kneeling.

360° pull tab for easy donning.

Larger circumference at the top makes it quick and easy to pull the boot on.

3/4"-height inner liner allows for increased flexibility and subtle feel at the calf while maintaining the soft lined feel of the leg and foot.

Conformance information molded in sidewall for easy identification.

Wider metatarsal design and comfort ankle for all day support.

Stress relief ridges to prevent cracking in heavy bending.

Superior shock absorption, support and comfort from the specially designed DuraPro® insole.



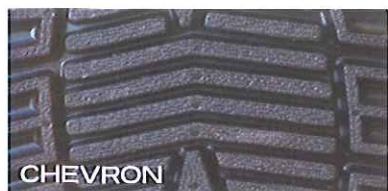
Honeycomb design molded inside the heel to reduce impact when walking.

Ergonomically designed foot-bed to provide better underfoot support.

Protective bumpers at rear of boot to prevent premature wear/puncture.

Extended circumference kick-off ledge.

High performance compounds provide the perfect chemical resistance in the upper and superior abrasion and slip resistance in the outsole.



MEASUREMENTS

Size Range

Composition

Color

Sole Design

Shank Style

Foot-bed

Steel Toe

Insole

BOOT PROFILE

US Men's size 3 – 16

DP: Polyblend Upper; Sureflex Outsole

XCP: Superpoly Upper; Sureflex Outsole

DP: Navy Blue Upper; Black Sole | XCP: Brown Upper; Black Sole

DP: Next Generation Safety-loc | XCP: Next Generation Chevron

Steel Shank

Ergonomically designed for all day comfort

ASTM F2413-11 Compliant

Shock absorbing contoured replaceable insole

Distributed by:

NELSON JAMESON
INC.

800-826-8302 nelsonjameson.com

ONGUARD 