



With our innovative selection  
of Disinfectant Mats™

- \* Original Disinfectant Mat™ \*
- \* High-Wall™ Disinfectant Mat™ \*
- \* Antimicrobial High-Wall™ Disinfectant Mat™ \*

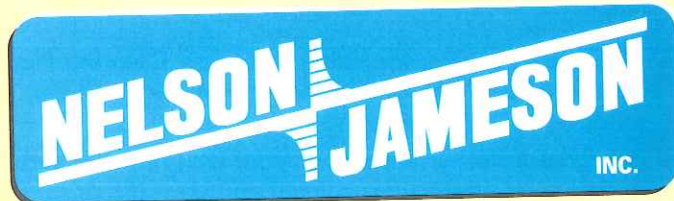
*Don't be fooled by imitations  
that will not stand up to heavy use...*

**Disinfectant Mats™** are the only mats  
manufactured to our heavy-duty standards.

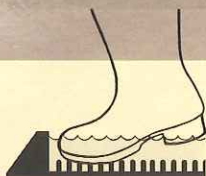
ORDER TOLL FREE

**1-800-826-8302**

FAX 1-800-472-0840  
[www.nelsonjameson.com](http://www.nelsonjameson.com)







## High-Wall™ Disinfectant Mat™

For applications requiring deeper foot immersion, try our High-Wall mat. You can be sure that footwear is sanitized and the soles are scrubbed off. Full 2" height guarantees that sanitizing solution contacts sole, sides and welt area of boots, penetrating even into deep treads. Depth of sanitizing solution is three times that of our standard Disinfectant Mat. Footwear gets a thorough bath to eliminate both bacteria and soil.

**Double-action.** The new High-Wall Disinfectant Mat features the same double-action that made our standard Disinfectant Mat famous. Rubber fingers scrub soles of shoes clean, holding them out of accumulated sediment, while sanitizing solution disinfects them. Step off clean and sanitary.

**Larger size assures compliance.** New size (32" x 39" x 2" deep) is 60% larger to cover most doorways and guarantee that personnel will not bypass the footbath. It is long enough for workers to step in it with both feet without breaking their stride. Holds 22 quarts of solution.

**Extra design features.** For safety and compliance, 2" ramp edge features a yellow stripe all around with message FOOTBATH USE REQUIRED. Interior corners allow use of simple hand pump to empty spent sanitizing solution without spilling on the floor.

Stock No.	Description	Wt/Unit	Sold by
430-2006	Standard	27 lb.	Each
430-2007	Chlorine Resistant	27 lb.	Each

**Let's speak frankly about footbaths ...** Some plant managers complain that employees don't use them. Others say that they don't get cleaned out often enough. Or, the sanitizing solution loses effectiveness, creating a source of contamination.

**We say:** Yes, these things can happen — but they don't have to. Each of these problems has a simple answer. Quality assurance techniques require monitoring. Disinfectant Mats, by themselves, don't create a sanitation program.

We can help you make it work. Because Nelson-Jameson has been in the business for so long, we've got some suggestions that have worked well for others:

- ✓ Have enough Disinfectant Mats so that employees don't need to go out of their way to use one. Locate them at every entrance to processing areas.
- ✓ If employees bypass footbaths, put several together to cover the whole entrance ... so they can't avoid them.
- ✓ Limit access to processing areas. Keep drivers, warehouse workers and office personnel out, if possible.
- ✓ Initiate a footwear and clothing program. Work clothes and boots should stay at work.
- ✓ Talk to your employees about the problem. Employee education is a powerful sanitation tool. It was highly recommended in our survey.
- ✓ Post "Use Footbath" signs as a reminder to employees.
- ✓ Check sanitizer concentration with test strips. They're convenient and simple. Keep daily or hourly log of results.
- ✓ Use longer lasting sanitizing solutions. Chlorine bleach dissipates rapidly, especially in the presence of a heavy organic soil load. Other compounds will last longer. Try quaternary ammonium, iodine, organic chlorine or acid sanitizers.
- ✓ Don't forget other aspects of your program. Air sampling, HACCP, surface sampling, insect control, drain cleaning, condensation control and cleaning of drip pans, condensers and air filters.



**FAX 1-800-472-0840**

**www.nelsonjameson.com | sales@nelsonjameson.com**

## Antimicrobial High-Wall™ Disinfectant Mat™

This is the footbath you've been looking for. You can effectively clean and sanitize footwear before entering or when passing from one area to another within your plant by placing an Antimicrobial Disinfectant Mat in every entryway.

The Antimicrobial Agent manufactured into the mat will not support the growth of unwanted microorganisms such as *Listeria monocytogenes*, *Salmonella enteritidis* and *E.coli* O157:H7. You now have peace of mind knowing the bacteria is checked at the door. Because the antimicrobial agent is diffused within the rubber, the entire mat inhibits the growth of microorganisms with which it comes in contact, resulting in a greatly reduced chance of bacteria hiding on the underside of the mat.

The highly visible yellow color makes it difficult to avoid, assuring more consistent use. The large 32" x 39" x 2" deep size holds enough sanitizer to cover the soles, sides and welt areas of the boots. This mat works just like our other Disinfectant Mats. As the user wipes his feet, hundreds of flexible rubber fingers clean dirt particles from the boot while simultaneously lowering the boot into the sanitizing solution. The finger design lets contaminants settle undisturbed, while the boot contacts clean solution only.

Bright yellow color also aids in visual inspection for quality control purposes—know at a glance when the mat needs to be cleaned and solution recharged. 32" x 39" size covers most doorways and guarantees personnel will not bypass the footbath. Holds 22 quarts of solution.



Stock No.	Description	Sold by
430-2051	Yellow Antimicrobial High-Wall™ Disinfectant Mat™	Each

## ACCESSORIES

### Test Strips



Stock No.	Description	#/Unit	Sold by
387-3294	Iodine, 12 – 100 ppm	200 strips/vial	Vial
387-3425	Chlorine, 10 – 200 ppm	200 strips/vial	Vial
387-3297	Quat, 50 – 400 ppm	100 strips/vial	Vial

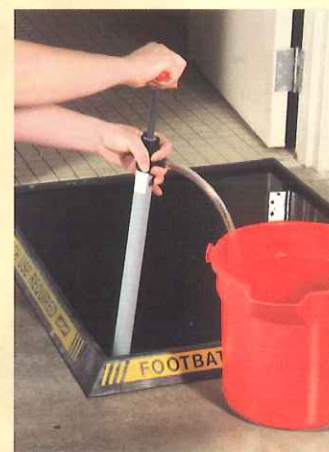
### Footbath Sign



Stock No.	Description	Sold by
083-2002	Footbath sign, 7" x 10"	Each

### Hand Pump and Pail

Designed specifically for use with our High-Wall™ Disinfectant Mat™, this pump fits securely into a "notched-out" area in the bottom of the mat. Pump expels up to 8 ounces of solution per stroke which nearly eliminates the tedious efforts associated with draining your disinfectant mat. 14-quart capacity bucket features a durable steel handle and built-in pour spout.



Stock No.	Description	Sold by
065-2918	Hand Pump	Each
142-2115	Red Bucket	Each





ORDER TOLL FREE  
**1-800-826-8302**

## Disinfectant Mat™ Sanitizing Footbath

**Stop Contamination at the Door ... with the Disinfectant Mat.** One step beyond the ordinary sanitizing footbath, it both cleans and sanitizes. Rubber fingers clean shoe soles while solution sanitizes them. This unique double-action helps keep contamination from reaching food processing areas.

**Here's how it works.** As the user wipes his feet on the Disinfectant Mat, hundreds of flexible rubber fingers clean dirt particles from the shoe. Simultaneously the sole of the shoe is lowered into the sanitizing solution. The finger design lets contaminants settle undisturbed, while the shoe contacts clean solution only. Step off the mat clean and sanitary.

Ordinary footbaths don't provide any scrubbing action. They do not keep users from tracking sediment back into a clean processing environment. And, because many "footbaths" are nothing more than a large pan, they present a real slip and trip hazard.

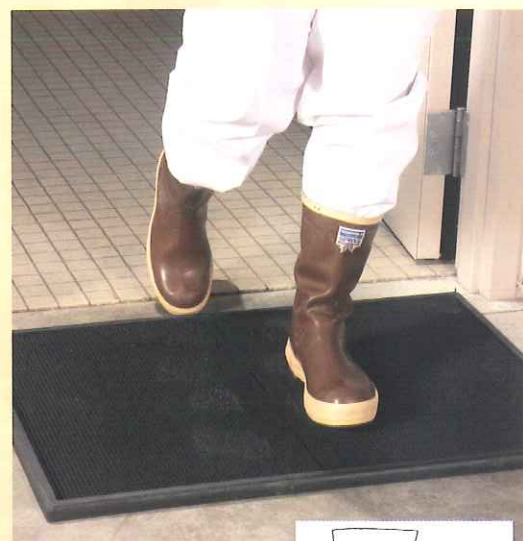
**Footbaths are recommended** by sanitarians and quality assurance departments. And, often, demanded by inspectors. Over 90% of the food plant professionals we surveyed said footbaths are *Very Important* or *Somewhat Important*. They are recommended at entrances to all food processing areas. Other important locations include doorways to starter rooms, packaging areas, laboratories, employee locker rooms, break rooms, refuse areas and receiving rooms—anywhere you want to limit the spread of contamination.

**Construction of the Disinfectant Mat.** Heavy duty black rubber is used throughout to stand up to traffic. Solid walls won't sag or allow solution to run out. Available in choice of two specially compounded rubbers. Use the Standard Mat for quaternary ammonium, iodine and most other sanitizers.

The Disinfectant Mat measures 24" x 32" x 7/8" deep, a convenient size for cleaning and maintaining. It also fits most doorways. For larger doorways, place two or more mats together. Holds up to 5 quarts of solution.

Staying put isn't a problem. Heavy rubber mat with corrugated back won't slide out of place or blow away.

Easily serviced by just turning over. Flexing action of rubber removes dirt and matter, even if caked. Empty, shake, rinse and refill. Always use test strips to measure sanitizer concentration.



## Sanitizers

All sanitizers are concentrated and must be diluted before use in a footbath. Follow label directions for appropriate dilutions.

Stock No.	Description	Sold by
019-5140	Chlorine	2.5 gallon container
019-5098	Acid	2.5 gallon container
019-5149	Quaternary Ammonium	2.5 gallon container

Stock No.	Description	Packaging	Wt/Unit	Sold by
430-2000	Chlorine Resistant	4/cs	13 lb.	Each
430-2005	Standard	4/cs	13 lb.	Each

**Let Nelson-Jameson  
be your one-stop  
supply source.**

Request your  
**FREE** copy of the  
**Nelson-Jameson  
Buyers Guide** today!

