



## **TEST SIEVE SHAKERS**

**Ro-Tap®** Models RX-29 RX-30 RX-94

**Ro-Tap®** E Model RX-29-E

Course Sieve Shaker Model RX-812

Quality • Service • Value  
[www.wstyler.com](http://www.wstyler.com)

**Parts & Operations Manual**

2013

# TABLE OF CONTENTS

|  | Page # |
|--|--------|
| Table of Contents                          | 1      |
| Set-up and Start-up                        | 2      |
| Hammer Drop Adjustment                     | 3      |
| RX-29, RX-30 <b>Ro-Tap</b> ® Parts Diagram | 4      |
| RX-29, RX-30 <b>Ro-Tap</b> Parts List      | 5      |
| RX-94 <b>Ro-Tap</b> Parts Diagram          | 6      |
| RX-94 <b>Ro-Tap</b> Parts List             | 7      |
| RX-812 Coarse Sieve Shaker Parts Diagram   | 8      |
| RX-812 Coarse Sieve Shaker Parts List      | 9      |
| <b>Ro-Tap</b> E Cover Page                 | 10     |
| <b>Ro-Tap</b> E Operating Instructions     | 11     |
| <b>Ro-Tap</b> E Twin Nut Clamping System   | 12     |
| <b>Ro-Tap</b> E Parts List                 | 13     |
| Standard Test Sieve Analysis               | 14-16  |
| Limited Warranty and Limitation            | 17     |

**W.S. TYLER® MENTOR, OHIO**

© Copyright 2010, Haver Tyler, Inc. All rights Reserved

**W.S. Tyler® and Ro-Tap®** are registered trademarks of Haver Tyler, Inc.

# SET-UP & START-UP

## Ro-Tap® RX MODELS

### Installation

The sieve shakers (**Ro-Tap®** Models RX-29 & RX-30 & Coarse Model RX-812) must be mounted on a **Ro-Tap®** Test Stand (R-40041), concrete foundation or heavy bench capable of supporting 200 lbs. Moderate tension of the mounting bolts is all that is required.

### Basic Operation

#### A) Ro-Tap®

Assemble a stack of sieves, beginning with the top cover, the coarsest (largest) sieve opening on top, with a pan on the bottom. Place the stack into the shaker, with the hammer tilted up and out of the way. Place the **Ro-Tap®** sieve cover, with the plug installed, on top of the sieve stack. The sieve support clamp bar is then adjusted, by loosening/tightening the two adjustable handles. Press the yellow buttons and turn handles in the appropriate direction. Bring the top of the Ro-Tap® sieve cover flush with the top of the upper carrying plate.

**NOTE:** Some force may be required to move the support clamp bar on the **Ro-Tap®** II (RX-94). This is due to the resistance of the gas safety spring.

#### B) Coarse Sieve Shaker

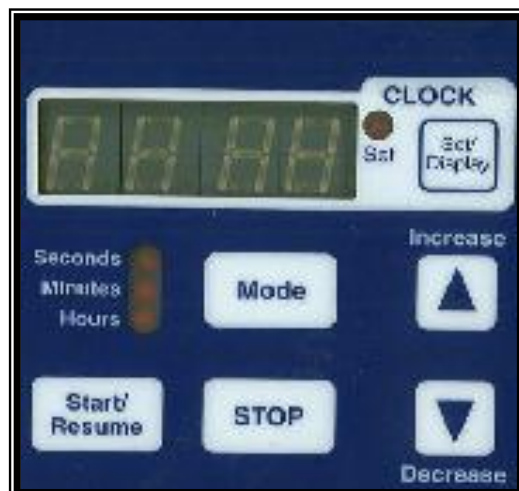
Assembly of the sieve stack is the same as with the **Ro-Tap®**. The clamping assembly is adjusted from the top down by screwing the two knobs down on the threaded clamp bars.

### Starting the Shaker (Timer Function)

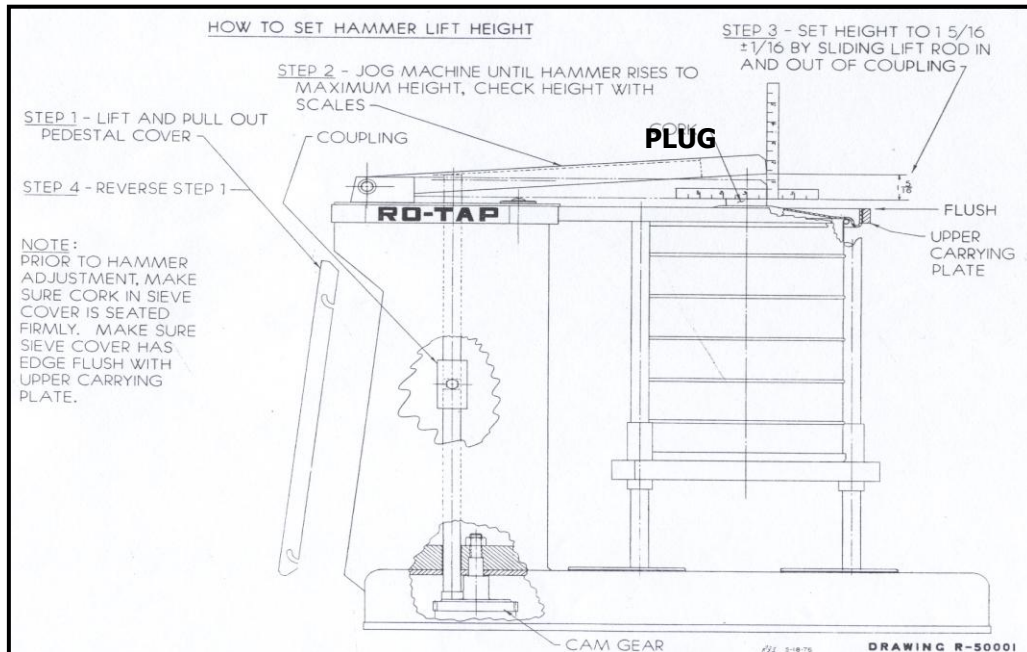
Make sure a sieve stack is in place at the time. To set the test run time, set the test duration by pushing the increase button until the desired time appears in the digital window. Push the start button to begin the test. An audible tone will be heard at the end of the test.

Should you wish to stop or interrupt the test at any time, simply push the stop button. Note that the remaining test time is frozen on the readout. To continue, simply push the start button. Once a test is complete, if you wish to repeat the prior process, simply push the start button. The most recent time will remain in memory.

**NOTE:** The timing device also has a clock function. To use this option, hold the "clock" set/display button and adjust the proper time with the increase/decrease buttons.



# HAMMER DROP ADJUSTMENT



## SETTING THE HAMMER LIFT HEIGHT

**Ro-Tap® MODELS:** RX-29 and RX-30 and RX-94

(NOTE: THIS SETTING HAS BEEN MADE ON ALL NEW UNITS)

- NOTE:** Prior to hammer adjustment; make sure plug is seated firmly in sieve cover. Make sure sieve cover has top edge flush with upper carrying plate. A stack of sieves must be used to achieve this setting.
- STEP 1:** Remove pedestal cover.
- STEP 2:** Jog machine until hammer rises to maximum height or use a box wrench on the hex head screw, located on top of the pedestal. Check height with scales.
- STEP 3:** Set height to  $1\frac{5}{16} \pm \frac{1}{16}$ " by loosening screw on coupling and adjusting lift rod.
- STEP 4:** Tighten screw on coupling.
- STEP 5:** Replace pedestal cover.

## Lubrication

The Tyler Sieve Shakers require only minimal periodic lubrication. The units incorporate plastic and oil-impregnated bronze bearing materials, which are self-lubricating. A few drops of light oil or WD-40™ every six months is all that is necessary to prevent drying of the parts. Application of the same lubricants will suffice if a squeak or a drag should develop in the mechanism.

**PLEASE BE ADVISED:** Review these warnings prior to use

### WARNING

|          |  |
|----------|--|
| <b>E</b> | Before removing cover set timer to zero and disconnect the power!  |
| <b>D</b> | Vor Öffnung der Maschine Zeitschaltuhr auf 0 stellen und Netzstecker ziehen!   |
| <b>F</b> | Tableau indicateur: Avant l'ouverture de la machine veuillez régler la minuterie à 0 et retirer la fiche de contact! |
| <b>S</b> | Advertencia: Ponga el marcador en zero y desconecte la electricidad antes de quitar la tapa!                         |

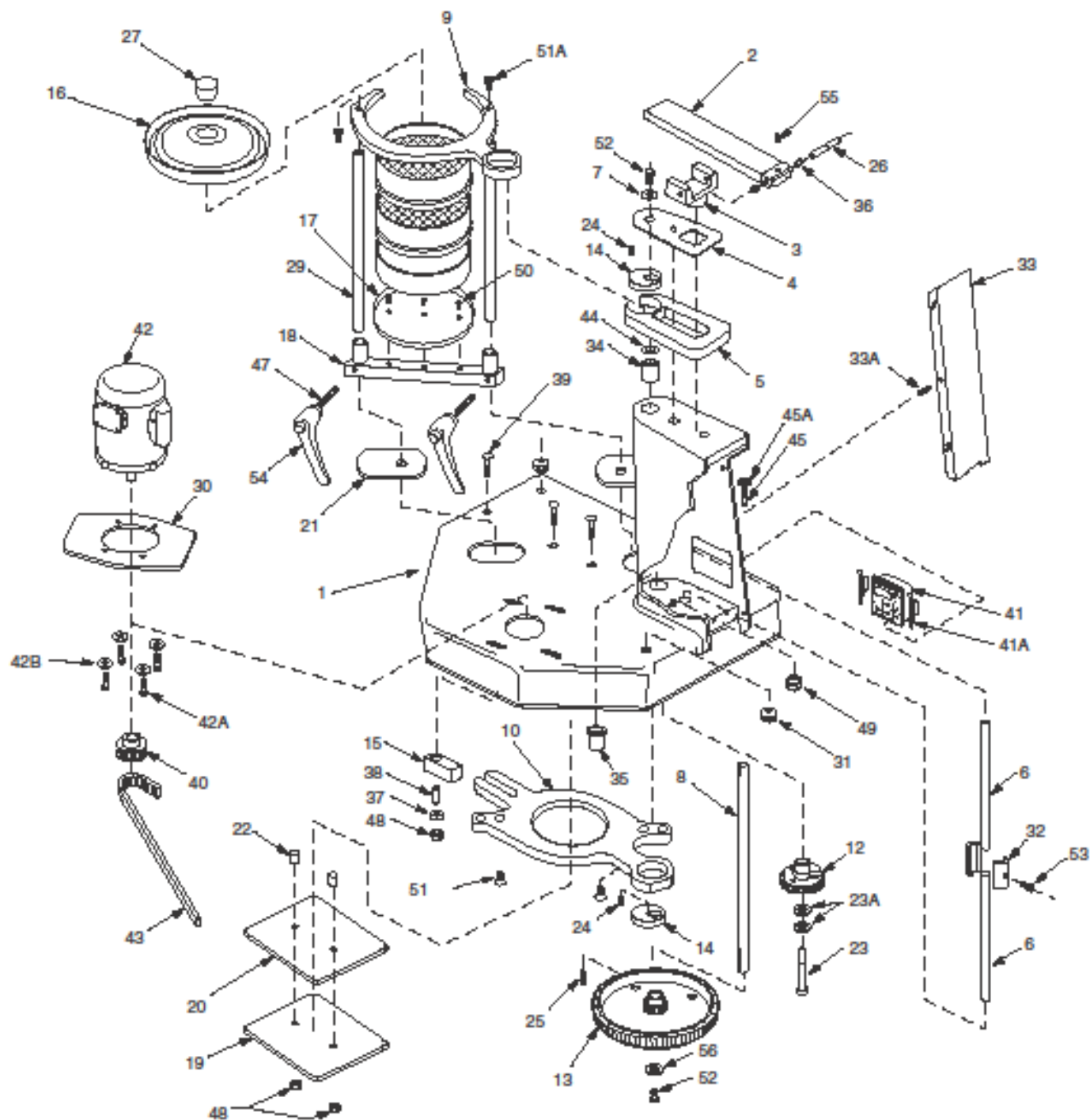


### WARNING

DO NOT USE THIS EQUIPMENT WHERE HAZARDOUS OR EXPLOSIVE DUST, VAPOR OR LIQUIDS MAY BE PRESENT

DO NOT MOUNT ON COMBUSTIBLE SURFACES

# RX-29 & RX-30 Ro-Tap® PARTS DIAGRAM



# RX-29 & RX-30 Ro-Tap® PARTS LIST

4

| ITEM | PART      | DESCRIPTION                                 | QTY REQ'D |
|------|-----------|---|-----------|
| 1    | 107770    | Base  | 1         |
| 2    | R-20029   | Hammer                                      | 1         |
| 3    | R-20023   | Hammer Block                                | 1         |
| 4    | R-30019   | Sheet Guard                                 | 1         |
| 5    | R-30010   | Rotating Guard                              | 1         |
| 6    | R-10036   | Lift Rod                                    | 2         |
| 7    | R-10038   | Upper Main Shaft Washer                     | 1         |
| 8    | R-20027   | Main Shaft                                  | 1         |
| 9    | R-30008   | Upper Carrying Plate/RX-29                  | 1         |
| 9a   | R-30008-1 | Upper Carrying Plate (alum)                 | 1         |
| 9    | R-30027   | Upper Carrying Plate/RX-30                  | 1         |
| 10   | R-30009   | Lower Carrying Plate                        | 1         |
| 12   | R-20039   | Cam Gear                                    | 1         |
| 13   | R-30015   | Timing Belt Pulley                          | 1         |
| 14   | R-10034   | Eccentric Disc                              | 2         |
| 15   | R-10032   | Block                                       | 1         |
| 16   | R-30007   | Sieve Cover (RX-29)                         | 1         |
| 16   | R-30011   | Sieve Cover (RX-30)                         | 1         |
| 17   | R-30006   | Sieve Support Plate (RX-29)                 | 1         |
| 17   | R-30013   | Sieve Support Plate (RX-30)                 | 1         |
| 18   | R-30023   | Sieve Support Clamp Bar (RX-29)             | 1         |
| 18   | R-30022   | Sieve Support Clamp Bar (RX-30)             | 1         |
| 19   | R-20019   | Backup Plate                                | 1         |
| 20   | R-20020   | Bearing Plate                               | 1         |
| 21   | R-20033   | Shield                                      | 2         |
| 22   | R-10028   | Tube Spacer                                 | 2         |
| 23   | R-10029   | Cam Shoulder Screw                          | 1         |
| 23A  | 106582    | I.D. Shim                                   | 2         |
| 24   | R-10042   | Main Shaft Key to Eccentric                 | 2         |
| 25   | R-10039   | Main Shaft Key-Lower                        | 1         |
| 26   | R-10035   | Hammer Pin                                  | 1         |
| 27   | R-10066   | Cork plug                                   | 1         |
| 28   | 108184    | Name Plate                                  | 1         |
| 29   | R-10033   | Tie-Rod                                     | 2         |
| 30   | R-30018   | Motor Adapter                               | 1         |
| 31   | ZA11167   | Grommet                                     | 2         |
| 32   | R-10030   | Lift Rod Coupling(2.50" Long)               | 1         |
| 33   | R-40011   | Pedestal Cover                              | 1         |
| 33A  | 8/18 X 75 | Self Tapping Screw                          | 1         |
| 34   | R-10061   | Flange Bearing                              | 1         |
| 35   | R-10062   | Bearing                                     | 1         |
| 36   | R-10063   | Flange Bearing                              | 2         |
| 37   | ZF10168   | Thrust Washer                               | 1         |
| 38   | R-10065   | Steel Bushing                               | 1         |
| 39   | ZF10174   | 3.8-16 NC X 2.25" Carriage Bolt             | 3         |
| 40   | R-10070   | Sprocket-14-Teeth (1800 RPM)<br>w/Set Screw | 1         |
|      |           | Sprocket-17-Teeth (1500 RPM)<br>w/Set Screw | 1         |
| 41   | R-40029   | Electronic Timer (115v)                     | 1         |

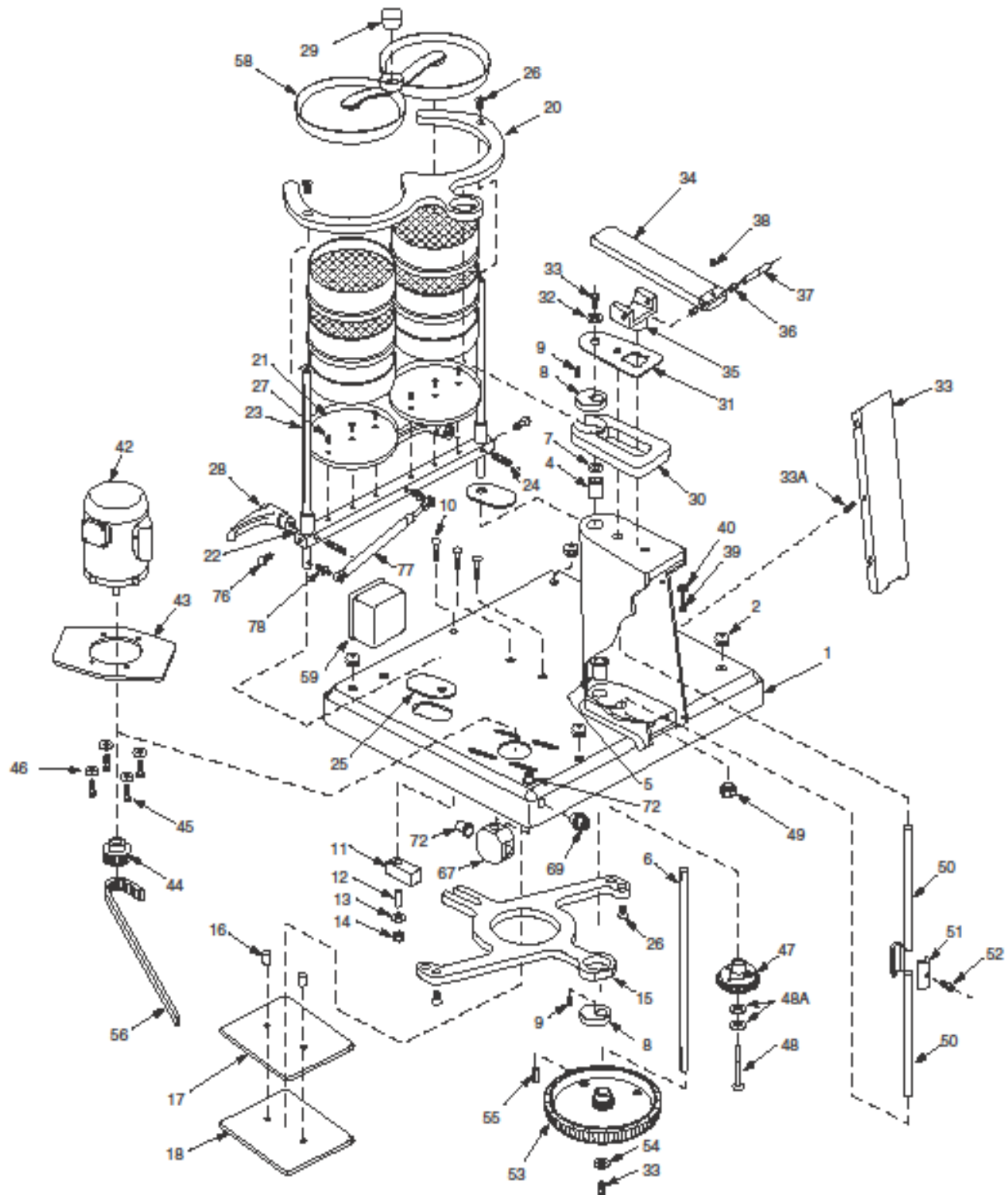
| ITEM | PART      | DESCRIPTION                            | QTY REQ'D |
|------|-----------|--|-----------|
| 41   | R-40037   | Electronic Timer (230v)                | 1         |
| 41A  | R-40040   | Timer Mounting Clip                    | 2         |
| 42   | P-1500-23 | Motor-Standard 115/230v 60/50Hz 1Phase | 1         |
| 42A  | ZF10183   | 3/8-16 x 1" Hex Flange Bolt            | 4         |
| 43   | R-10058   | Timing Belt                            | 1         |
| 44   | R-10055   | Shim                                   | 1         |
| 45   | ZZ10068   | 1/2-13 x 2.50" Long Hex Hd. Bolt       | 1         |
| 45A  | ZZ10323   | 1/2 I.D. Lock Washer                   | 1         |
|      |           |  | 1         |
| 47   | R-10079   | Clamp Screw                            | 2         |
| 48   | ZF10221   | 3/8" Lock Nut                          | 3         |
| 49   | ZF10222   | 1/2" Hex Lock Nut                      | 1         |
| 50   | ZF10231   | 10-32x.50" LongFlatHeadSocketCap Screw | 3         |
| 51   | ZF10241   | 3/8-16x.75"LongFlatHeadSocketCap Screw | 2         |
| 51A  | ZF10183   | 3/8-16x1" Hex Flange Bolt              | 2         |
| 52   | 114162    | 3/6-16x x 62" Long Hex Head Screw      | 2         |
| 53   | ZF10251   | 5/16-24x1.25" LongSocket HeadCapScrew  | 1         |
| 54   | R-20082   | Adj. Handle (Support Bar)              | 2         |
| 55   | ZA10148   | #10-24x.25" Socket Hd. Set Screw       | 1         |
| 56   | ZF10271   | 3/8 I.D. X 1.50" O.D. Fender Washer    | 1         |
| 60*  | R-10018   | Timer Cord w/Plug                      | 1         |
| 61*  | R-10019   | Cable Tie M'g                          | 3         |
| 62*  | R-10112   | Straight Connector (APC-050)           | 2         |
| 66*  | 107764    | Flexible Conduit                       | 1         |
| 67*  | R-10076   | Wire Clip                              | 1         |
| 68*  | ZZ10011   | Screw For Wire Clip & Ground Screw     | 3         |
| 69*  | R-20081   | Wrench                                 | 1         |

**\*ITEMS NOT SHOWN**

**\*PARTS SOLD AS EACH**

5

# RX-94 Ro-Tap® II PARTS DIAGRAM



# RX-94 Ro-Tap® II PARTS LIST

6

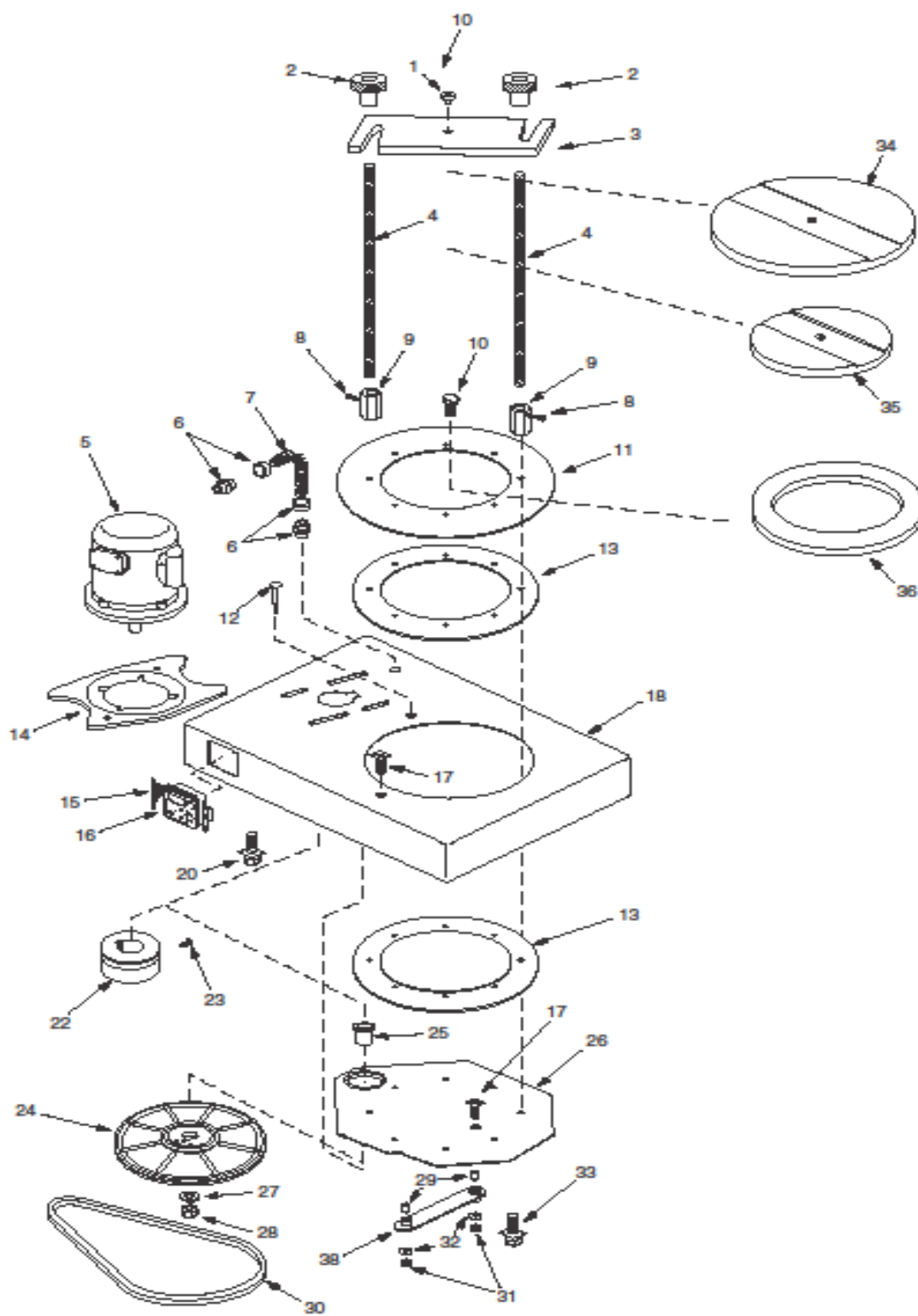
| ITEM | PART      | DESCRIPTION                                | QTY REQD | ITEM  | PART       | DESCRIPTION                                     | QTY REQD |
|------|-----------|--|----------|---|------------|---|----------|
| 1    | R-40023   | Painted Base Weldment                      | 1        | 48A   | 106582     | ½" I.D. Shim                                    | 2        |
| 2    | ZA11167   | Grommet                                    | 4        | 49  | ZF10222    | ½"-13 Locknut                                   | 1        |
| 3    | R-10117   | Gasket Channel                             | 4        | 50  | R-10036    | Lift Rod  | 2        |
| 4    | R-10061   | Flanged Bearing                            | 1        | 51  | R-10030    | Lift Rod Coupling                               | 1        |
| 5    | R-10062   | Bearing                                    | 1        | 52  | ZF10251    | 5/16-24 x 1/25" Long Socket Head Cap Screw      | 1        |
| 6    | R-20027   | Mainshaft                                  | 1        | 53  | R-30015    | Timing Belt Pulley                              | 1        |
| 7    | R-10055   | Shim 1.420.D. x .0155 Th.                  | 1        | 54  | ZF10271    | 3/8 I.D. X 1.50" O.D. Fender Washer             | 1        |
| 8    | R-10034   | Eccentric Disc                             | 2        | 55  | R-10039    | Main Shaft Key (Lower)                          | 1        |
| 9    | R-10042   | Main Shaft Key                             | 2        | 56  | R-10058    | Timing Belt                                     | 1        |
| 10   | ZF10174   | 3/8-16 x 2.25" Carriage Bolt               | 3        | 57  | R-40011    | Pedestal Cover                                  | 1        |
| 11   | R-10032   | Block                                      | 1        | 58  | R-40020    | Dual Sieve Cover                                | 1        |
| 12   | R-10065   | Steel Bushing .62 O>D> x .385 I.D. x1.25"  | 1        | 59  | R-40030    | Timer Enclosure                                 | 1        |
| 13   | ZF10168   | 3/8" Flatwasher                            | 1        | 60*   | R-40029    | Electronic Timer (115v)                         | 1        |
| 14   | ZF10221   | 3/8-16 Locknut                             | 2        | 60*   | R-40037    | Electronic Timer (230v)                         | 1        |
| 15   | R-40017   | Lower Carrying Plate                       | 1        | 61*   | ZZ10014    | ¼ x 1.25" Long Hex Head Screw                   | 2        |
| 16   | R-10028   | Tube Spacer                                | 2        | 62*   | ZZ10281    | ¼ I.D. Flat Washer                              | 2        |
| 17   | R-20020   | Bearing Plate                              | 1        | 63*   | R-40034    | Spacer (for Timer Enclos.)                      | 2        |
| 18   | R-20019   | Back-Up Plate                              | 1        | 64*   | ZZ10253    | ¼-20 Hex Nut                                    | 2        |
| 19   | ZF10221   | 3/8-16 Lockout                             | 2        | 65  | 108184     | Name Plate                                      | 1        |
| 20   | R-40019   | Upper Carrying Plate                       | 1        | 66  | Std.#7     | Drive Screws                                    | 2        |
| 21   | R-30006   | Support Plate                              | 2        | 67  | R-10118    | 3 ¼" Octagon Box (Appleton #30))                | 1        |
| 22   | R-40018   | Dual Sieve Support Clamp Bar               | 1        | 68*   | R-40032    | 3 ¼" Square Box Cover                           | 1        |
| 23   | R-40021   | Tie Rod                                    | 2        | 69  | R-10119    | ½" Cord Grip Strain Relief (Appleton #CG31505)  | 1        |
| 24   | R-10079   | Clamp Screw                                | 2        | 70*   | 11478      | X 1/50 Long Nipple                              | 1        |
| 25   | R-20033   | Shield                                     | 2        | 72  | R-10112    | Straight Connector?APC-050                      | 2        |
| 26   | ZF10241   | 3/8-16 x .75" Long Flat Head Screw         | 4        | 73*   | R-10116    | Extra Flex Connector/ APC-0509                  | 2        |
| 27   | ZF10231   | #10-32 x .50" Long Flat Head Screw         | 6        | 74*   | 114163     | Non-Metallic Flex Conduit (LTC 050) 0' 12" Long | 1        |
| 28   | R-20082   | Adj. Handles (Support Bar)                 | 2        | 75*   | 114164     | Non Metallic Flex Conduit (LTC050) 1' 9 ½" Long | 1        |
| 29   | R-10066-A | Cork Plug                                  | 1        | 76  | R-40028    | Hand Retractable Plunger                        | 2        |
| 30   | R-30010   | Rotating Guard Assembly                    | 1        | 77  | R-10099-30 | Gas Spring (Guden #CG824-30)                    | 1        |
| 31   | R-30019   | Sheet Guard                                | 1        | 78  | 114165     | Spring Stud (Guden #BS101-02)                   | 2        |
| 32   | R-10038   | Upper Mainshaft Washer                     | 1        | <b>*ITEMS NOT SHOWN</b><br><b>*PARTS SOLD AS EACH</b> |            |   |          |
| 33   | 114162    | 3/8-16 x .62" Long Hex Head Cap Screw      | 2        |   |            |   |          |
| 34   | R-20029   | 8" Hammer                                  | 1        |   |            |   |          |
| 35   | R-20023   | Hammer Block                               | 1        |   |            |   |          |
| 36   | R-10063   | Flanged Bearing                            | 2        |   |            |   |          |
| 37   | R-10035   | Hammer Pin                                 | 1        |   |            |   |          |
| 38   | ZA10148   | #10-24 x .25" Long Flat Point Socket Screw | 1        |   |            |   |          |
| 39   | ZZ10068   | 1/2 x 2.50" Long Hex Head Bolt             | 1        |   |            |   |          |
| 40   | ZZ10323   | ½ I.D. Lockwasher                          | 1        |   |            |   |          |
| 42   | P-1500-23 | Motor-Standard 115/230V 60/50Hz 1 phase    | 1        |   |            |   |          |
| 43   | R-30018   | Motor Adapter Plate                        | 1        |   |            |   |          |
| 44   | R-10070   | Sprocket-14 Teeth(1800 rpm) w/ Set Screw   | 1        |   |            |   |          |
| 45   | ZF10183   | 3/8-16 x 1.00" Long Hex Head Screw         | 4        |   |            |   |          |

7



|    |         |                      |   |
|----|---------|----------------------|---|
| 46 | ZF10168 | 3/8 I.D. Flat Washer | 4 |
| 47 | R-20039 | Cam Gear             | 1 |
| 48 | R-10029 | Cam Shoulder Screw   | 1 |

## RX-812 COARSE SIEVE SHAKER PARTS DIAGRAM



## RX-812 COARSE SIEVE SHAKER PARTS LIST

8

| ITEM | PART      | DESCRIPTION                          | QTY. |
|------|-----------|--------------------------------------|------|
| 1    | LC10016   | Locating Pin                         | 1    |
| 2    | LC10017   | Clamping Knobs                       | 2    |
| 3    | LC10018   | Clamp Bar                            | 1    |
| 4    | LC10015   | Clamping Rods                        | 2    |
| 5    | P-1500-23 | Motor ¼ HP 115/230V 60/50 Hz 1 Phase | 1    |
| 6    | R-10112   | Flexible Conduit Connector           | 2    |
| 7    | 102542    | Oilite Flexible Conduit – 8-1/2"     | 1    |
| 8    | ZA10956   | 10-24 Cup Point Set Screw            | 4    |
| 9    | LC10014   | Coupling                             | 2    |
| 10   | LB10266   | Rolok 10-24 Self Tap Screw           | 6    |
| 11   | LC10007   | Shield                               | 1    |
| 12   | LB10041   | Special Carriage Bolt                | 1    |
| 13   | LC10005   | Bearing Ring                         | 2    |
| 14   | LC10052   | Adapter                              | 1    |
| 15   | R-40040   | Timer Mounting Clip                  | 2    |
| 16   | R-40029   | Electronic Timer (115v)              | 1    |
| 16   | R-40037   | Electronic Timer 230v)               | 1    |
| 17   | ZZ10792   | -28 x 1-3/4" Soc. Cap. Ser.          | 2    |
| 18   | LC10003   | Base, Sieve Shaker                   | 1    |
| 19   | LC10052   | Rubber Channel                       | 1    |
| 20   | ZF10183   | 3/8" – 16 x 1.00 Hex Hd. Bolt        | 3    |
| 21   | 108184    | Nameplate                            | 1    |
| 22   | LB10111   | Drive Pulley – 1-1/2" O.D.           | 1    |
| 23   | ZA10148   | 10-24 x 3/8" Cup Point Set Scr.      | 1    |
| 24   | LB10451   | Pulley/Eccentric Assembly            | 1    |
| 25   | LB10191   | Flanged Stand Off Bushing            | 1    |
| 26   | LC10006   | Carrying Plate                       | 1    |
| 27   | ZF10168   | 3/8" Hard Washer                     | 1    |
| 28   | ZF10221   | 3/8" -16 Lock Nut                    | 1    |
| 29   | LB10201   | Stand Off Bushing                    | 2    |
| 30   | LB10211   | Drive Belt-21.310                    | 1    |
| 31   | ZZ10801   | ¼-"28 Black Lock Not                 | 2    |
| 32   | ZZ10301   | Flat Washer                          | 6    |
| 33   | ZF10184   | 5/16"-18 Black Hex Hd. Bolt          | 2    |
| 34   | LC10010   | 12" Cover Clamping Plate             | 1    |
| 35   | LC10011   | 8" Cover Clamping Plate              | 1    |
| 36   | LC10009   | 12" to 8" Conversion Plate           | 1    |
| 37*  | R-10018   | 110V Cord Set                        | 1    |
| 38   | LC10012   | Arm                                  | 1    |
|      |           |                                      |      |



**Ro-Tap® E**

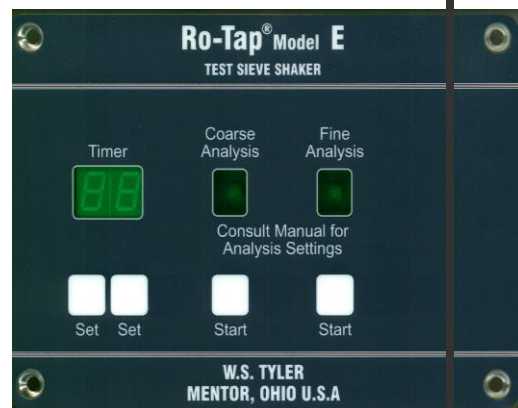
**Model RX-29-E**



## STARTING AND OPERATING

**Set values**  
**Actual values**

**Entry keys**  
**Left (-)**  
**Right (+)**



### Starting the Machine

Switch on the machine with the **main switch** (located at the rear of the unit). All Indicators on the front panel will read "0".

### Time

The sieving time is shown in minutes (99 minutes maximum) and appears in the indication field of set values/actual values. The sieving time will countdown to "0". Without setting the sieving time (set point 00) the machine operates continuously.

The sieving time can be fed by one pair of entry keys for each function. The left key decreases, while the right key increases the test time. When pressing one of the keys for a longer moment, the numbers pass quickly.

### Analysis Settings

There are two amplitude analysis settings. One for **coarse** and the second for **fine material**.

The Model **Ro-Tap® E** features an intermittent operation. Every 10 seconds, the machine will pause for 3 seconds, allowing the sample to settle.

Analysis Guide: If the smallest particle is 1 mm (USA #18) or greater in size, use the COARSE analysis control setting. For all other applications, use the FINE setting.

Each material application is different. Local analysis may be required to determine which control setting will produce the best results.

### Start/Stop

To start the machine, press the **START** button. As the unit runs, the remaining analysis time will be shown in the display window. To stop the machine, press the **START** button again.

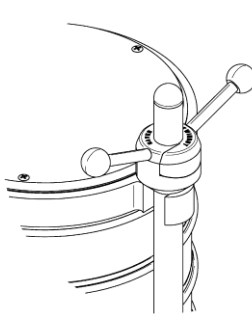
# NEW HAVER TWINNUT CLAMPING SYSTEM

The new 'Haver TwinNut' clamping system perfectly combines the advantages of the previous Classic and Easylock Systems.

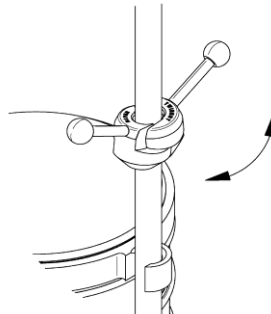


## Function:

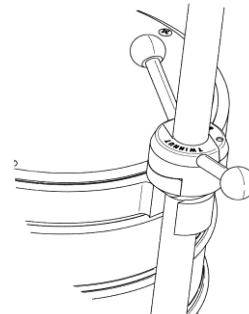
The sieve is fixed using the nuts in the same way as the Classic system (1.0 + 3.0). Varying heights of the sieve tower are achieved by opening the TwinNuts (2.0).



1.0



2.0

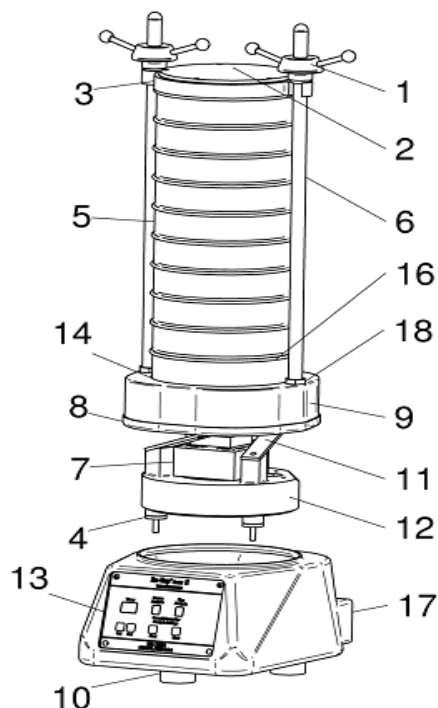


3.0

## Advantages:

- The test sieves can be changed easily and quickly.
- Only a small turn is required to open and close the nuts.
- The wing-handles make the tightening of the nuts easier.
- The guide rods of the Classic system can also be used for the TwinNut system (it can be refitted at low cost).
- No grease and dust sensitivity.
- Suitable for every application area.
- Suitable for all HAVER Test Sieve Shakers.

# RX-29 E Ro-Tap® PARTS DIAGRAM AND PARTS LIST



| Item # | Piece | Designation  | Article # |
|--------|-------|--|-----------|
| 1      | 2     | Nuts for clamping system Easy Lock®                                | 00560129  |
| 2      | 1     | Inspection glass without hole for machine cover (dry)              | 00561499  |
|        | 1     | Inspection glass with hole for machine cover (wet)                 | 00561507  |
| 3      | 1     | Cover with inspection glass  | 00561521  |
|        | 1     | Cover without inspection glass                                     | 00561514  |
|        | 1     | Cover with inspection glass and wide spreading spray diffuser      | 00561545  |
| 4      | 3     | Rubber buffer  | 66000074  |
| 5      |       | Test sieves (sold separately)                                      |           |
| 6      | 2     | Guide rods, clamping system Easy Lock®, 660 mm long                | 00560154  |
| 7      | 1     | Oscillation magnet   | 65300016  |
| 8      | 1     | Rubber profile for vibration body                                  | 00560441  |
| 9      | 1     | Vibration body   | 68500312  |
| 10     | 3     | Rubberized pads  | 00560014  |
| 11     | 3     | Leaf spring  | 68500231  |
| 12     | 1     | Base plate   | 68500311  |
| 13     | 1     | Separate control unit  | 00560169  |
|        | 1     | Front panel with control board                                     |           |
| 14     | 1     | Rubber ring for vibration body Ø 204 / Ø 160                       | 68500015  |
| 16     | 1     | Sieve pan with outlet  |           |
| 17     | 1     | Plug connection with main switch and fuse box                      |           |
|        | 1     | Plate with cable with screw fitting                                |           |
| 18     | 2     | Counter nut  |           |
| 19     | 1     | Precision fuse, 20x5 mm, 3, 25 Ampere MT (not shown)               | 65100000  |
| 20     | 1     | Rubber seal for cover (not shown)                                  | 00560434  |
|        |       | <b>*Call Customer Service for current pricing<br/>800.321.6188</b> |           |

# TEST SIEVE ANALYSIS

## Test Equipment

Test sieves “nest” together to form a “stack” of sieves. In most sieving tests the 8 inch diameter sieve is used. A test sieve shaker that provides both circular and tapping energy is recommended. Uniform mechanical motion will provide the most consistent results.

## Testing Times

Free flowing, coarse material requires less time than fine, bulky particles. Once you establish the proper time, duplication of testing becomes extremely important to obtain accurate, repeatable results.

Conduct repeated experimental testing to determine the optimal testing time. For example, perform tests of 5, 10, 15 & 20 minutes. You can determine the optimal time when the results between the different times change no more than .5 to 1 percent. The shortest time should then be used consistently.

## Performing a Sieve Analysis

You can begin your particle size distribution analysis after you properly collect, prepare and size a sample. Select test sieves with mesh openings that reveal particle distribution at critical sizes. These are usually stated in a product specification or determined by material processing requirements.

To perform the analysis, do the following:

1. Stack the sieves on top of each other with the coarsest (largest) opening on the top of the stack.
2. Put a bottom pan under the finest (smallest) opening sieve. This pan collects “fine” material that passes through the last one.
3. Use a laboratory scale (accurate to .1 gram) to weigh an empty container (such as an extra empty bottom pan) and establish the tare weight.
4. Weigh the sample material.
5. Empty the sample into the top of the stack. Make sure you do not overload the surface as this causes “blinding” or blocking of the openings.
6. Put the stack into the sieve shaker.
7. Place a cover on the top of the stack.
8. Make sure the stack is securely in place.
9. Set the proper length of time to agitate the material.
10. Turn on the shaker and run the test.
11. After the shaker stops, empty the material from the coarsest sieve into the empty container that you weighed in step (3). Use a soft bristle brush to gently brush the underside of the sieve to remove all of the particles.
12. Tap the side of the frame with the handle of the brush to clean the remaining material from the sieve.
13. Weigh the contents in the pan to the nearest 1/10 gram and record the data.
14. Return the material to its original sample container.
15. Repeat steps 11 through 14, using the container referenced in step (3) for each sieve, including the fine material in the bottom pan.
16. Total the weights to make sure the sum of the retained material and the material in the bottom pan is as close as possible to the original weight. Check your specification for allowable variation.
17. Divide the weight obtained from each sieve by the weight of the original sample. Record the percentage for each sieve.
18. Calculate and record the cumulative percentages as required.

The key to successful, repetitive particle analysis is developing standard testing procedures.

### **Basic Elements of Testing**

1. Sample Preparation.
2. Test sample sizes or weights.
3. Test Equipment.
4. Testing times or intervals.
5. Recording results.

### **Sample Preparation**

When deciding how much material to test, consider the type of material, screen ability of the material and the range of particle sizes.

If the particle range of material representing feed to a screen or product from a crusher is wide, use a large sample (from 500 to 1,000 GRAMS). If the material is finely ground, use a smaller sample of 25 to 100 grams.

Do not use too large a sample in the test. The smaller the sample, the more consistent the results (as long as the sample is properly taken). To obtain an accurate sieve test sample, every particle must present itself to the screen openings for retention or for passing through to the next finer sieve. Make sure the sample is large enough so that the coarsest sieve retains enough representative particles.

For example, if a "stack" contains six sieves, a fine particle must repeat the passing process six times. The fine particles cannot pass through to their proper end when overloading occurs.

As a general rule, limit the size of a sample in weight so that no sieve in the "stack" is overloaded. Overloading usually occurs in testing closely graded materials, where the range of particle size is limited. In such cases, determine the size by capacity of the sieve that retains the largest amount of the sample.

Use the following procedure to determine your sample size:

1. Accurately split out samples of varying weights (25, 50, 100, 150 and 200 grams) with a sample splitter.
2. Run the various samples on the selected sieves for five minutes.
3. Compare the results to get the correct sample size.

When two sample sizes provide similar results, use the larger of the two for your test size. For example, if the 100 gram sample shows approximately the same results as the 50 gram sample, but the 150 grams sample produces differing results, use the 100 gram sample as the correct sample size.

Near-mesh particles (those with dimensions close to the sieve opening) require that you lightly load the sieves. This allows presentation of the particles to the sieve opening many times, which allows maximum opportunity for accurate classification.

### **Wet Testing**

Some materials do not test well under dry conditions. If the material is not water soluble, you can perform an accurate sieve analysis with special equipment.

The Sieve Shaker with a Wet Test Kit will be required. The wet test kit ensures there will be no splashing or contamination of the samples.

The test should be performed the same as dry material (previous section) with one exception. Water, as called for by the test procedure, must be added to the sample prior to the test run.



**Static Electricity**

Some materials generate static electricity during the dry sieving process. When particles “charge” themselves as they come in contact with other particles, they stick to the metal frame and cloth of the sieve. This prevents you from obtaining accurate results.

As a suggestion:

- Add a small amount of talc, activated charcoal, powdered magnesium carbonate or burgess clay to the sample material. For a 100 gram sample add approximately 1 gram of chemical.
- Mix thoroughly to completely coat the particle surfaces.
- Perform the sieve test.

This method may not eliminate static electricity entirely; however, the effect should be significantly reduced and will not affect your test results.

# W.S. TYLER™ INDUSTRIAL GROUP

## W.S. TYLER

8570 Tyler Blvd.

Mentor, Ohio 44060

**ISO 9001:2008 REGISTERED**

800.321.6188 toll free

440.974.1047 local

440.974.0921 fax

e-mail: [wstyler@wstyler.com](mailto:wstyler@wstyler.com)

Web: [www.wstyler.com](http://www.wstyler.com)

## HAVER & BOECKER

Ennigerioher Str. 64

D-59302 Oelde, Germany

49-25522-30-0 phone

49-2522-30404 fax

[www.haverboecker.com](http://www.haverboecker.com)

## Ro-Tap® Accessories also available:

- **Ro-Tap®** Maintenance Kits
- **Ro-Tap®** Test Stand
- **Ro-Tap®** Sound Enclosure
- Wet Test Kits

### LIMITED WARRANTY AND LIMITATION W.S. Tyler™ Industrial Group, Mentor, OH

W.S. Tyler warrants, commencing with the date of the first use and for a period of twelve (12) months thereafter, its Industrial Group Products to be free from defects in workmanship and materials. This warranty applies to the first purchaser.

If, within such warranty period, any new products shall be proved to W.S. Tyler's satisfaction to be defective, it shall be repaired, or at W.S. Tyler's option, replaced F.O.B. factory, without charges.

W.S. Tyler's obligation hereunder shall be confined to such repair or replacement and does not include any charges, direct or indirect, for shipping, removing, or installing defective products.

No warranty shall apply to used products nor to products which have been furnished, repaired or altered by others so as, in W.S. Tyler's judgment, to affect the same adversely or which shall have been subject to negligence, accident or improper care, installation, maintenance, storage or other than normal use or service.

W.S. TYLER'S EXPRESSED WARRANTY AND THE REMEDIES SET FORTH HEREIN ARE EXCLUSIVE AND NO OTHER WARRANTIES, GUARANTEES OR REMEDIES OF ANY KIND WHETHER STATUTOR, WRITTEN, ORAL, EXPRESSED, OR IMPLIED, INCLUDING THE WARRANTIES OF MERCHANTABILITY AND/OR FITNESS FOR A PARTICULAR PURPOSE, SHALL APPLY.

This warranty gives you specific legal rights, and you may also have other rights that vary from state to state. The liability of W.S. Tyler arising out of the manufacture, sale, delivery, use or resale of the product, whether based on warranty, contract, negligence, tort, strict liability or otherwise, and whether for direct, indirect, special, consequential, exemplary, punitive or other damage, shall not exceed the cost of replacement of the product. Upon the expiration of the warranty, all such liability shall terminate.

IN NO EVENT SHALL W.S. TYLER BE LIABLE FOR LOSS OF PROFITS, DIRECT, INDIRECT, INCIDENTAL, SPECIAL OR CONSEQUENTIAL DAMAGES, WHETHER ATTRIBUTABLE TO DEFECTS IN MATERIAL FURNISHED, PRODUCT IDENTIFICATION, DELAYS IN DELIVERY, OR OTHERWISE. Some states do not allow the exclusion or limitation of incidental or consequential damages, so the above limitation may not apply to you.

© Copyright 2011, W.S. Tyler. All Rights Reserved.

