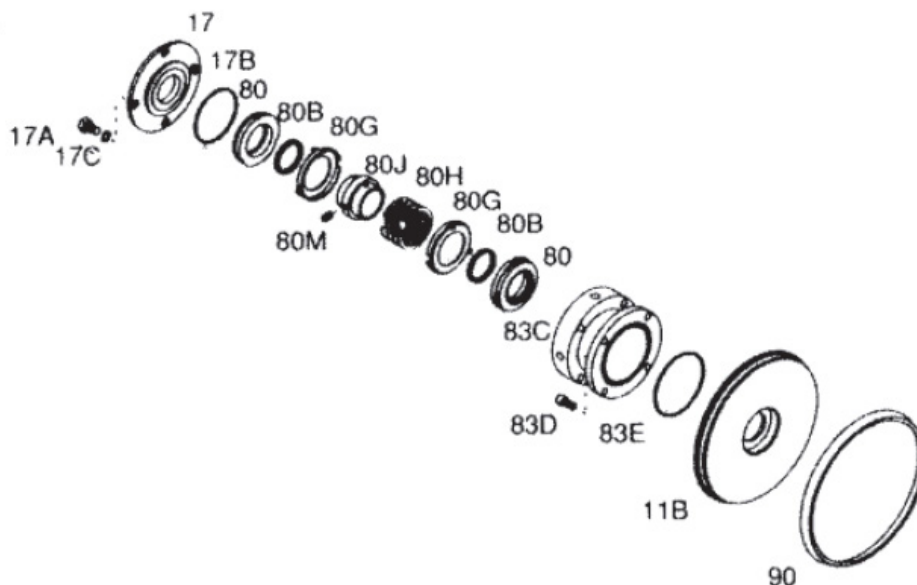


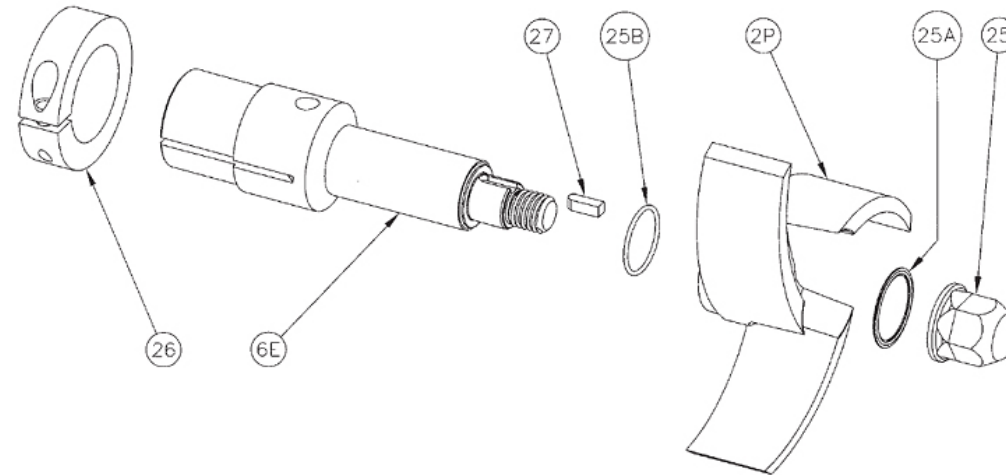
# AC+ Series E Parts Breakdown



		AC+114		AC+216		AC+218		AC+328		AC+4410	
Key	Description	Stock #	Mfg #	Stock #	Mfg #	Stock #	Mfg #	Stock #	Mfg #	Stock #	Mfg #
90	Casing Gasket	383-1470	482737	382-7652	483195	383-1855	484083	383-1855	484083	383-1990	488389
11B	Backplate E	383-1446	482268	383-7344	481331	383-1843	482277	383-1843	482277	383-7897	482286
83E	O-ring	383-7254	751064	383-7242	755489	S603584	755528	S603584	755528	S603584	755528
83D	Machine Screw	382-1604	180419	383-7214	180142	384-1606	180705	384-1606	180705	384-1606	180705
83C	Stuffing Box	383-1449	481844	383-1665	482276	S133288	482280	S133288	482280	--	482285
80	Carbon Seal	383-7149	480739	383-1659	480510	383-1834	480525	383-1834	480525	383-1889	482292
80B	O-ring	S121167	299060	384-1425	300552	S600823	480479	S600823	480479	--	755368
80G	Cup	383-1436	481327	383-1644	481333	383-1835	481209	383-1835	481209	383-1896	482291
80H	Spring	383-1481	481324	383-1664	481334	383-1844	481210	383-1844	481210	383-1897	482294
80J	Drive Collar	382-7479	481270	383-1639	481271	383-1831	481212	383-1831	481212	S135070	482290
80M	Seat Screw-Drive Collar	383-1881	189815	383-7209	189840	383-7209	189840	383-7209	189840	383-7209	189840
17	Follower	383-1630	481811	383-1631	482275	383-1829	481211	383-1829	481211	383-1458	482289
17A	Machine Screw	383-7214	180142	383-1605	189773	384-1605	189773	384-1605	189773	383-1605	189773
17B	O-ring	383-1396	755469	384-1429	751064	384-1402	751297	384-1402	751297	--	755471
17C	Lock washer	--	--	382-7277	189962	382-7277	189962	382-7277	189962	383-1898	189962

Verify correct model number using equipment serial number.

## AC+ Shaft Parts Breakdown



MOTOR KEYS MUST BE TRIMMED TO ALLOW AC STUB SHAFTS TO SLIDE THE PROPER DISTANCE ON THE MOTOR SHAFT. THIS IS THE RECOMMENDED DISTANCE FROM THE KEY TO THE END OF THE SHAFT FOR EACH MOTOR FRAME.

MOTOR FRAME	DISTANCE FROM END
56C	1/2"
140TC	1/2"
180TC	3/4"
210TC	1"
250TC	1"
280TC	1"
280TSC	1/8"
320TC	1-5/8"
320TSC	5/8"

DISTANCE FROM END OF MOTOR SHAFT

KEY  
MOTOR SHAFT

		AC+114		AC+216		AC+218		AC+328		AC+4410	
Key	Description	Stock #	Mfg #	Stock #	Mfg #	Stock #	Mfg #	Stock #	Mfg #	Stock #	Mfg #
26	Shaft Collar 56C-140tc	031-1182	SX18000013	031-1182	SX18000013	031-1182	SX18000013	--	--	--	--
26	Shaft Collar 180tc	031-1186	SX18000014	031-1186	SX18000014	031-1186	SX18000014	031-1186	SX18000014	--	--
26	Shaft Collar 210tc	--	--	031-1183	SX18000015	031-1183	SX18000015	031-1183	SX18000015	031-1183	SX18000015
26	Shaft Collar 250tc	--	--	031-1181	SX18000016	031-1181	SX18000016	031-1181	SX18000016	031-1181	SX18000016
26	Shaft Collar 280tSc	--	--	--	--	--	--	031-1184	SX18000035	031-1184	SX18000035
26	Shaft Collar 320tc	--	--	--	--	--	--	031-1185	SX18000027	031-1185	SX18000027
6E	Stub Shaft-56C	031-1190	C114E-56TP-06	031-1197	C216-E56TP-06	--	--	--	--	--	--
6E	Stub Shaft-140TC	031-1191	C114E-14TP-06	031-1198	C216-E14TP-06	031-1199	C328E-14TP-06	--	--	--	--
6E	Stub Shaft-180TC	031-1190	C114E-56TP-06	031-1201	C216-E18TP-06	031-1192	C328E-18TP-06	031-1192	C328E-18TP-06	--	--
6E	Stub Shaft-210TC	--	--	0311202	C216-E21TP-06	031-1193	C328E-21TP-06	031-1193	C328E-21TP-06	031-1194	4410E-21TP-06
6E	Stub Shaft-250TC	--	--	0311200	C216-E25TP-06	031-1195	C328E-25TP-06	031-1195	C328E-25TP-06	031-1203	4410E25TP-06
6E	Stub Shaft-280TSC	--	--	--	--	031-1196	C328E-28TP-06	031-1196	C328E-28TP-06	031-1205	4410E28TSCP-06
6E	Stub Shaft-320TSC	--	--	--	--	--	--	031-1204	C328E-32TP-06	031-1206	4410E32TSCP-06
6E	Stub Shaft-360TSC	--	--	--	--	--	--	--	--	031-1207	4410E36TSCP-06
27	Impeller Key	209-1370	S114-95C-316L	209-1371	S216-95C-316L	209-1372	S328-95C-316L	209-1372	S328-95C-316L	209-1373	S4410-95C-316L
25B	Impeller Back Gasket-B	209-1383	S114-25B-U	209-1386	S216-25B-U	209-1389	S328-25B-U	209-1389	S328-25B-U	209-1392	S4410-25B-U
25B	Impeller Back Gasket-E	209-1384	S114-25B-E	209-1387	S216-25B-E	209-1390	S328-25B-E	209-1390	S328-25B-E	209-1393	S4410-25B-E
25B	Impeller Back Gasket-V	209-1385	S114-25B-V	209-1388	S216-25B-V	209-1391	S328-25B-V	209-1391	S328-25B-V	209-1394	S4410-25B-V
2P	Impeller	209-1374	S114-02CP-316L	209-1375	S216-02CP-316L	209-1376	S218-02CP-316L	209-1377	S328-02CP-316L	209-1378	S4410-02CP-316L
25A	Impeller Nut Gasket-B	209-1395	S114-25A-U	209-1399	S216-25A-U	209-1453	S328-25A-U	209-1453	S328-25A-U	209-1455	S4410-25A-U
25A	Impeller Nut Gasket-E	209-1396	S114-25A-E	209-1451	S216-25A-E	209-1454	S328-25A-E	209-1454	S328-25A-E	209-1456	S4410-25A-E
25A	Impeller Nut Gasket-V	209-1398	S114-25A-V	209-1452	S216-25A-V	209-1340	S328-25A-V	209-1340	S328-25A-V	209-1457	S4410-25A-V
25	Impeller Nut	209-1379	S114-91C-316L	209-1380	S216-91C-316L	209-1381	S328-91C-316L	209-1381	S328-91C-316L	209-1382	S4410-91C-316L

Verify correct model number using equipment serial number.