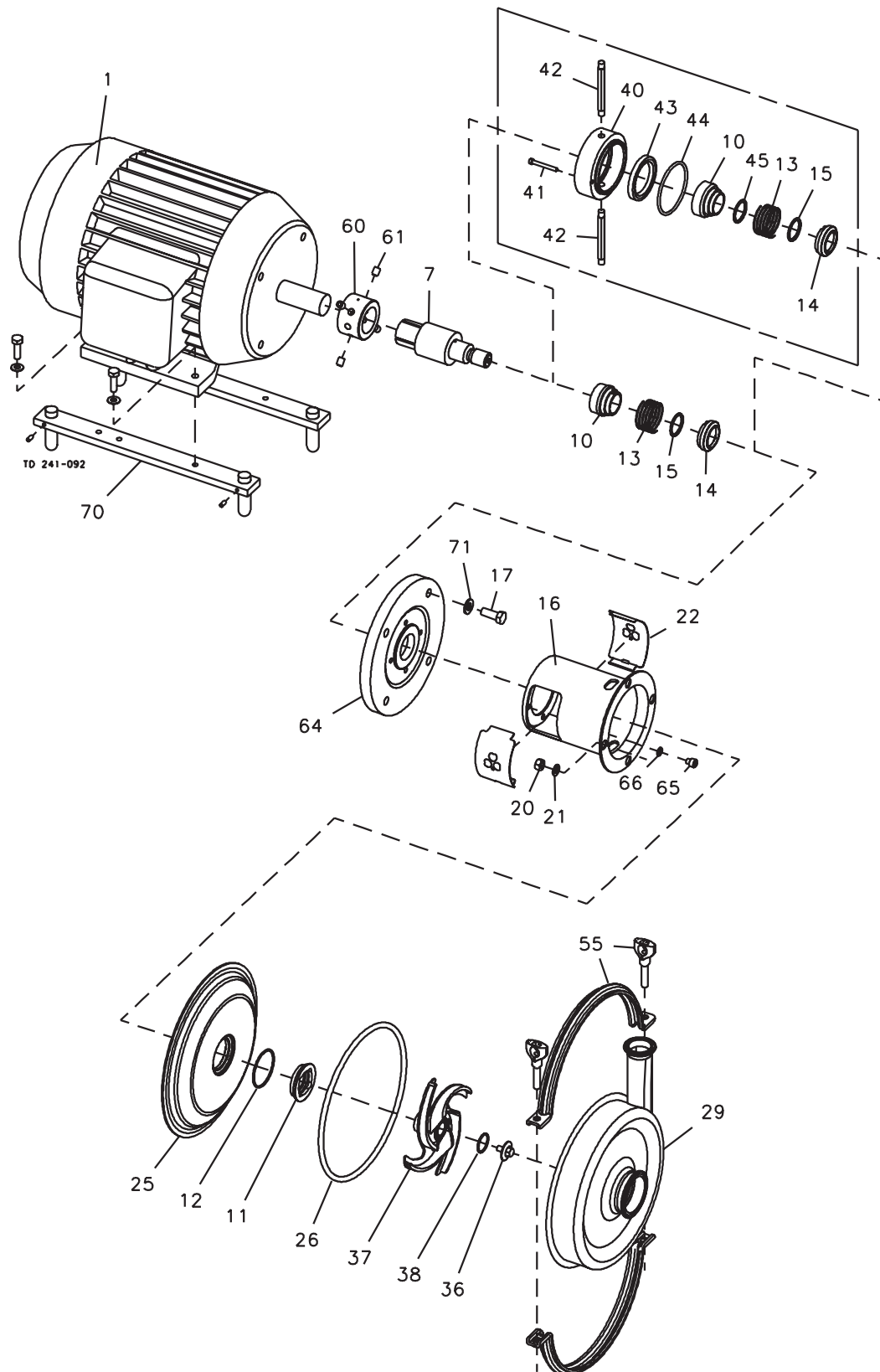


This page shows an exploded drawing of SolidC-1.
The drawing includes all items of the pump.



The drawing and the parts list include all items.

Pos.	Qty.	Denomination	1.5-2Hp	3-5Hp	7.5-10Hp
7	1	Shaft	9612-9137-01	9612-9138-01	9612-9139-01
10	1	Drive ring, Plastic Single shaft seal	9612-1377-01	9612-1377-01	9612-1377-01
	1	Drive ring, SS Single shaft seal	9612-9268-01	9612-9268-01	9612-9268-01
	1	Drive ring, SS Flushed shaft seal	9612-1397-01	9612-1397-01	9612-1397-01
16	1	Adaptor	9612-9454-05	9612-9454-06	9612-9454-07
17	4	Screw for motorflange	9611-99-4411	9611-99-4412	9611-99-4413
20	4	Nut for backplate	9611-99-0353	9611-99-0353	9611-99-0353
21	4	Washer for backplate	9611-99-0786	9611-99-0786	9611-99-0786
22	2	Safety guard	9612-9153-01	9612-9153-01	9612-9153-01
25	1	Backplate	9612-9114-09	9612-9114-09	9612-9114-09
26	□○ 1	O-ring for casing, EPDM (standard)	9611-99-4241	9611-99-4241	9611-99-4241
	1	O-ring for casing, NBR	9611-99-4242	9611-99-4242	9611-99-4242
	1	O-ring for casing, FPM	9611-99-4243	9611-99-4243	9611-99-4243
	1	O-ring for casing, FEP	9611-99-4244	9611-99-4244	9611-99-4244
29	1	Pump casing, Tri-clamp	9612-9102-01	9612-9102-01	9612-9102-01
36	1	Impeller screw	9612-3627-03	9612-3627-03	9612-3627-03
37	1	Impeller	9612-9115-06	9612-9115-06	9612-9115-06
38	□○ 1	O-ring for impeller screw, EPDM (standard)	9611-99-2750	9611-99-2750	9611-99-2750
	1	O-ring for impeller screw, NBR	9611-99-2751	9611-99-2751	9611-99-2751
	1	O-ring for impeller screw, FPM	9611-99-2752	9611-99-2752	9611-99-2752
	1	O-ring for impeller screw, FEP	9611-99-3539	9611-99-3539	9611-99-3539
55	1	Clamp set	9612-9154-05	9612-9154-05	9612-9154-05
60	1	Comp. Ring	9612-9142-04	9612-9142-02	9612-9142-05
61	4	Screw for comp. Ring	9611-99-4258	9611-99-4258	9611-99-4259
64	1	Motor flange	9612-9160-14	9612-9160-15	9612-9160-16
65	4	Screw for adaptor	9611-99-4399	9611-99-4399	9611-99-4399
66	4	Spring washer for adaptor	9611-99-1888	9611-99-1888	9611-99-1888
71	4	Spring washer for motorflange	9611-99-4416	9611-99-4417	9611-99-4417

legs

70	2	Bracket set stainless steel	481656	481661	481663
		Bracket set carbon steel	481655	481658	481662
		(standard)			

Pos.	Qty.	Denomination	1.5Hp	2Hp	3Hp	5Hp	7.5Hp	10Hp
1	1	Motor 3600rpm.....	9613-6016-23	9613-6016-24	9613-6016-25	9613-6016-26	9613-6016-27	9613-6016-28

Pos.	Qty.	Denomination	1Hp	1.5Hp
1	1	Motor 1800rpm.....	9613-6016-87	9613-6016-88

3/60/208/230-460 - S standard

Accessories

1	Tool for seal	9612-9036-01
1	Impeller gauge.....	9613-6016-80

Parts for Flushed Shaft Seal

40	1	Seal housing	9612-1339-01
42	2	Tube	9612-3589-15
41	2	Screw for seal housing	9611-99-0203

Service kit for single shaft seal

□	Service kit, EPDM	9611-92-2454
□	Service kit, NBR	9611-92-2455
□	Service kit, FPM.....	9611-92-2456
□	Service kit, FEP	9611-92-2457

Service kit for flushed shaft seal

○	Service kit, EPDM	9611-92-2462
○	Service kit, NBR	9611-92-2463
○	Service kit, FPM.....	9611-92-2464
○	Service kit, FEP	9611-92-2465

Service kit SIC/SIC for single shaft seal

○	Service kit, EPDM	9611-92-2811
○	Service kit, NBR	9611-92-2812
○	Service kit, FPM.....	9611-92-2813
○	Service kit, FEP	9611-92-2814

Service kit SIC/SIC for flushed shaft seal

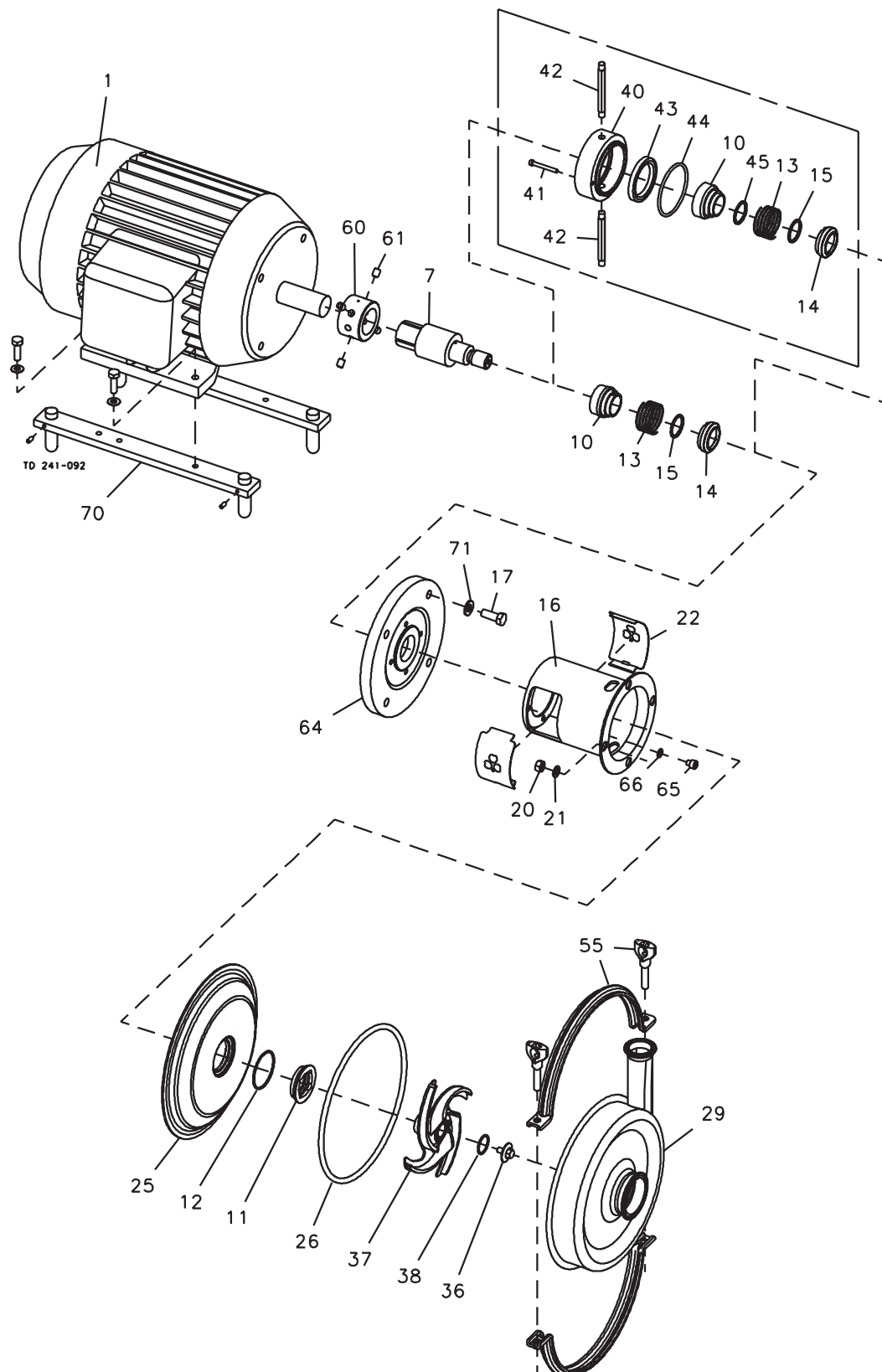
○	Service kit, EPDM	9611-92-2815
○	Service kit, NBR	9611-92-2816
○	Service kit, FPM.....	9611-92-2817
○	Service kit, FEP	9611-92-2818

Recommended Spare parts: Service kits 900240/0. Shaft seal: See page 10-11.

Conversion kit, single to flushed shaft seal 9611-92-2469=10+40+41+42+43+44+45

Parts marked with □/○ are included in the service kits.

This page shows an exploded drawing of SolidC-2.
The drawing includes all items of the pump.



The drawing and the parts list include all items.

Pos.	Qty.	Denomination	3-5Hp	7.5-10Hp	15-20Hp
7	1	Shaft	9612-9138-01	9612-9139-01	9612-9140-01
10	1	Drive ring, Plastic Single shaft seal	9612-1377-01	9612-1377-01	9612-1377-01
	1	Drive ring, SS Single shaft seal	9612-9268-01	9612-9268-01	9612-9268-01
	1	Drive ring, SS Flushed shaft seal	9612-1397-01	9612-1397-01	9612-1397-01
16	1	Adaptor	9612-9454-06	9612-9454-07	9612-9454-08
17	4	Screw for motorflange	9611-99-4412	9611-99-4413	9611-99-4414
20	4	Nut for backplate	9611-99-0353	9611-99-0353	9611-99-0353
21	4	Washer for backplate	9611-99-0786	9611-99-0786	9611-99-0786
22	2	Safety guard	9612-9153-01	9612-9153-01	9612-9153-01
25	1	Backplate	9612-9114-10	9612-9114-10	9612-9114-10
26	□○ 1	O-ring for casing, EPDM (standard)	9611-99-4245	9611-99-4245	9611-99-4245
	1	O-ring for casing, NBR	9611-99-4246	9611-99-4246	9611-99-4246
	1	O-ring for casing, FPM	9611-99-4247	9611-99-4247	9611-99-4247
	1	O-ring for casing, FEP	9611-99-4248	9611-99-4248	9611-99-4248
29	1	Pump casing, Tri-clamp	9612-9102-02	9612-9102-02	9612-9102-02
36	1	Impeller screw	9612-3627-03	9612-3627-03	9612-3627-03
37	1	Impeller	9612-9118-06	9612-9118-06	9612-9118-06
38	□○ 1	O-ring for impeller screw, EPDM (standard)	9611-99-2750	9611-99-2750	9611-99-2750
	1	O-ring for impeller screw, NBR	9611-99-2751	9611-99-2751	9611-99-2751
	1	O-ring for impeller screw, FPM	9611-99-2752	9611-99-2752	9611-99-2752
	1	O-ring for impeller screw, FEP	9611-99-3539	9611-99-3539	9611-99-3539
55	1	Clamp set	9612-9154-06	9612-9154-06	9612-9154-06
60	1	Comp. Ring	9612-9142-02	9612-9142-05	9612-9144-01
61	4	Screw for comp. Ring	9611-99-4258	9611-99-4259	9611-99-4259
64	1	Motor flange	9612-9160-06	9612-9160-07	9612-9160-08
65	4	Screw for adaptor	9611-99-4399	9611-99-4399	9611-99-4399
66	4	Spring washer for adaptor	9611-99-1888	9611-99-1888	9611-99-1888
71	4	Spring washer for motorflange	9611-99-4417	9611-99-4417	9611-99-4417

legs

70	2	Bracket set stainless steel	481661	481663	481665
		Bracket set carbon steel	481658	481662	481664

Pos.	Qty.	Denomination	3Hp	5Hp	7.5Hp	10Hp	15Hp	20Hp
1	1	Motor 3600rpm.....	9613-6016-25	9613-6016-26	9613-6016-27	9613-6016-28	9613-6016-29	9613-6016-30

Pos.	Qty.	Denomination	1Hp	1.5Hp	2Hp	3Hp
1	1	Motor 1800rpm.....	9613-6016-87	9613-6016-88	9613-6016-89	9613-6016-90
3/60/208/230-460 - S standard						

Accessories

1	Tool for seal	9612-9036-01
1	Impeller gauge.....	9613-6016-80

Parts for Flushed Shaft Seal

40	1	Seal housing	9612-1339-01
42	2	Tube	9612-3589-15
41	2	Screw for seal housing	9611-99-0203

Service kit for single shaft seal

□	Service kit, EPDM	9611-92-2471
□	Service kit, NBR	9611-92-2472
□	Service kit, FPM.....	9611-92-2473
□	Service kit, FEP	9611-92-2474

Service kit for flushed shaft seal

○	Service kit, EPDM	9611-92-2479
○	Service kit, NBR	9611-92-2480
○	Service kit, FPM.....	9611-92-2481
○	Service kit, FEP	9611-92-2482

Service kit SIC/SIC for single shaft seal

○	Service kit, EPDM	9611-92-2819
○	Service kit, NBR	9611-92-2820
○	Service kit, FPM.....	9611-92-2821
○	Service kit, FEP	9611-92-2822

Service kit SIC/SIC for flushed shaft seal

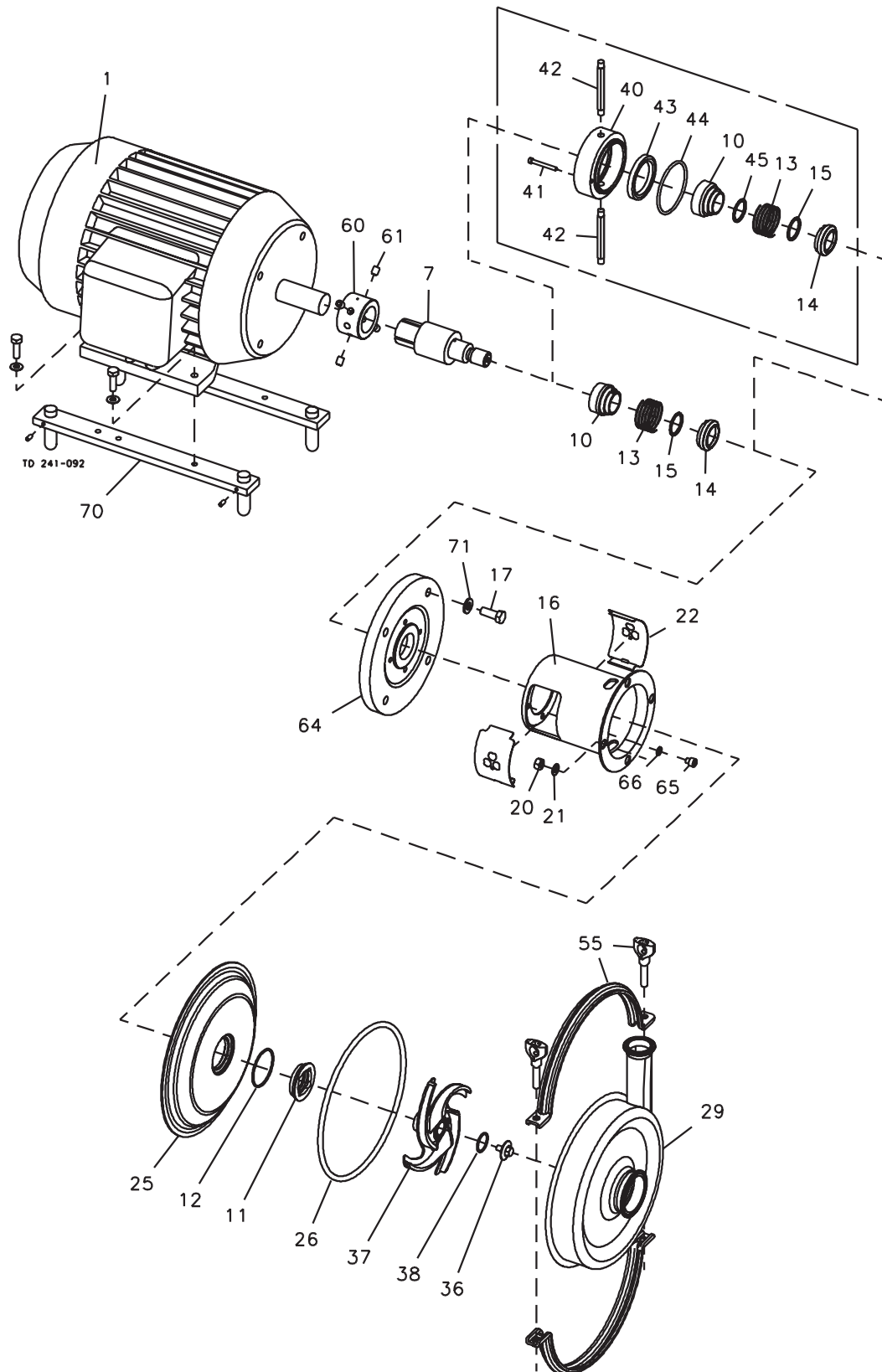
○	Service kit, EPDM	9611-92-2823
○	Service kit, NBR	9611-92-2824
○	Service kit, FPM.....	9611-92-2825
○	Service kit, FEP	9611-92-2826

Recomended Spare parts: Service kits 900241/0. Shaft seal: See page 10-11.

Conversion kit, single to flushed shaft seal 9611-92-2469=10+40+41+42+43+44+45

Parts marked with □/○ are included in the service kits.

*This page shows an exploded drawing of SolidC-3.
The drawing includes all items of the pump.*

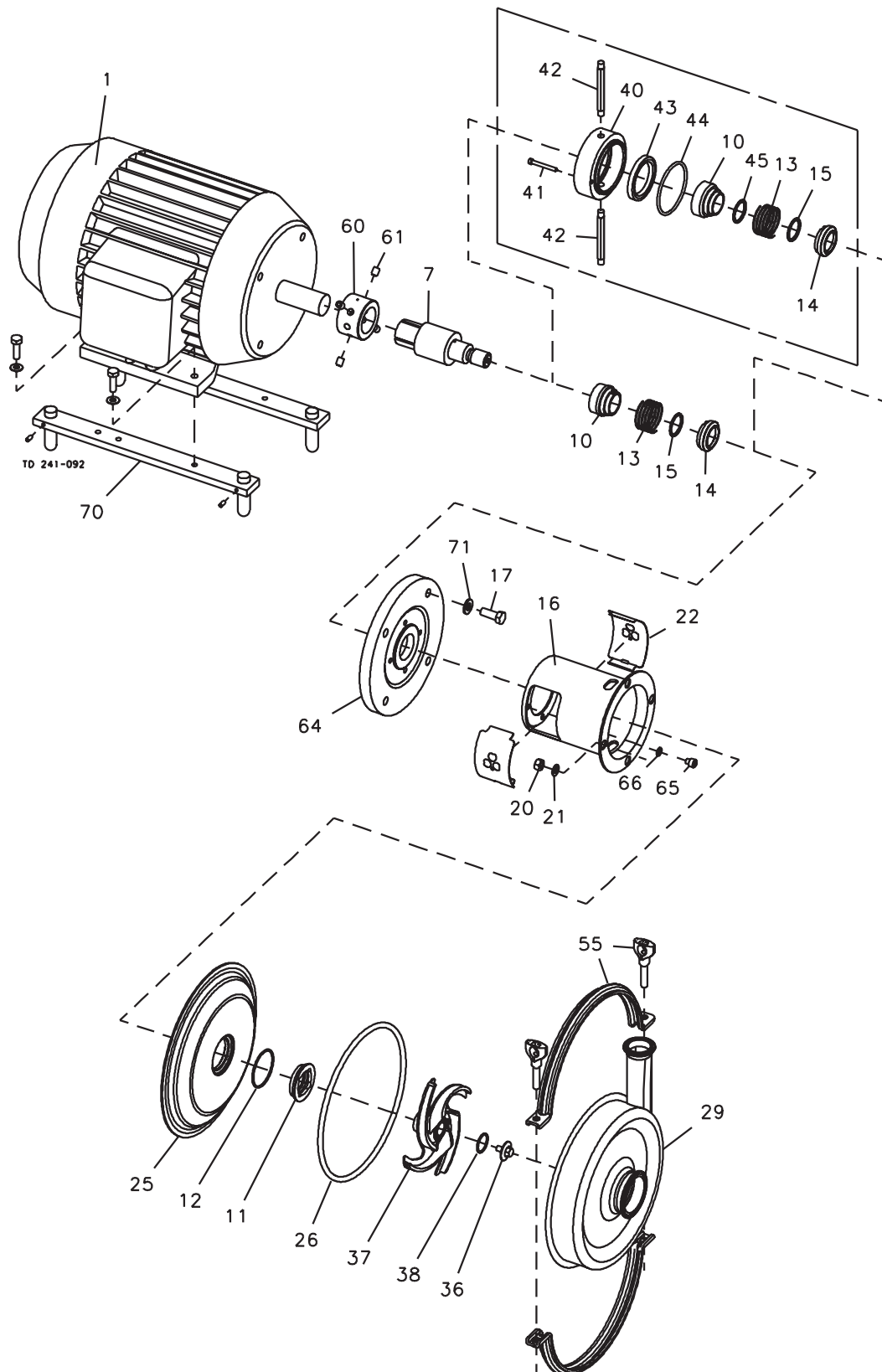


The drawing and the parts list include all items.

Pos.	Qty.	Denomination	5Hp	7.5-10Hp	15-20Hp	25-30Hp			
7	1	Shaft	9612-9138-01	9612-9139-01	9612-9140-01	9612-9140-01			
10	1	Drive ring, Plastic Single shaft seal ...	9612-1377-01	9612-1377-01	9612-1377-01	9612-1377-01			
	1	Drive ring, SS Single shaft seal	9612-9268-01	9612-9268-01	9612-9268-01	9612-9268-01			
	1	Drive ring, SS Flushed shaft seal	9612-1397-01	9612-1397-01	9612-1397-01	9612-1397-01			
16	1	Adaptor	9612-9454-06	9612-9454-07	9612-9454-08	9612-9454-09			
17	4	Screw for motorflange	9611-99-4412	9611-99-4413	9611-99-4414	9611-99-4414			
20	4	Nut for backplate	9611-99-0353	9611-99-0353	9611-99-0353	9611-99-0353			
21	4	Washer for backplate	9611-99-0786	9611-99-0786	9611-99-0786	9611-99-0786			
22	2	Safety guard	9612-9153-01	9612-9153-01	9612-9153-01	9612-9153-01			
25	1	Backplate	9612-9114-11	9612-9114-11	9612-9114-11	9612-9114-11			
26	□○	O-ring for casing, EPDM	9611-99-4249	9611-99-4249	9611-99-4249	9611-99-4249			
		(standard)							
	1	O-ring for casing, NBR	9611-99-4250	9611-99-4250	9611-99-4250	9611-99-4250			
	1	O-ring for casing, FPM	9611-99-4251	9611-99-4251	9611-99-4251	9611-99-4251			
	1	O-ring for casing, FEP	9611-99-4252	9611-99-4252	9611-99-4252	9611-99-4252			
29	1	Pump casing, Tri-clamp	9612-9102-03	9612-9102-03	9612-9102-03	9612-9102-03			
36	1	Impeller screw	9612-3627-03	9612-3627-03	9612-3627-03	9612-3627-03			
37	1	Impeller	9612-9121-06	9612-9121-06	9612-9121-06	9612-9121-06			
38	□○	O-ring for impeller screw ,	9611-99-2750	9611-99-2750	9611-99-2750	9611-99-2750			
		EPDM (standard)							
	1	O-ring for impeller screw ,	9611-99-2751	9611-99-2751	9611-99-2751	9611-99-2751			
		NBR							
	1	O-ring for impeller screw ,	9611-99-2752	9611-99-2752	9611-99-2752	9611-99-2752			
		FPM							
	1	O-ring for impeller screw ,	9611-99-3539	9611-99-3539	9611-99-3539	9611-99-3539			
		FEP							
55	1	Clamp set	9612-9154-07	9612-9154-07	9612-9154-07	9612-9154-07			
60	1	Comp. Ring	9612-9142-02	9612-9142-05	9612-9144-01	9612-9144-01			
61	4	Screw for comp. Ring	9611-99-4258	9611-99-4259	9611-99-4259	9611-99-4259			
64	1	Motor flange	9612-9160-06	9612-9160-07	9612-9160-08	9612-9160-09			
65	4	Screw for adaptor	9611-99-4399	9611-99-4399	9611-99-4399	9611-99-4399			
66	4	Spring washer for adaptor	9611-99-1888	9611-99-1888	9611-99-1888	9611-99-1888			
71	4	Spring washer for	9611-99-4417	9611-99-4417	9611-99-4417	9611-99-4417			
		motorflange							
legs									
70	2	Bracket set stainless steel ..	481661	481663	481665	481669			
		Bracket set carbon steel	481658	481662	481664	481668			
Pos.	Qty.	Denomination	5Hp	7.5Hp	10Hp	15Hp	20Hp	25Hp	30Hp
1	1	Motor 3600rpm.....	9613-6016-26	9613-6016-27	9613-6016-28	9613-6016-29	9613-6016-30	9613-6016-31	9613-6016-32
Pos.	Qty.	Denomination	1Hp	1.5Hp	2Hp	3Hp	5Hp		
1	1	Motor 1800rpm.....	9613-6016-87	9613-6016-88	9613-6016-89	9613-6016-90	9613-6016-91		
3/60/208/230-460 - S standard									
Accessories									
	1	Tool for seal	9612-9036-01						
	1	Impeller gauge	9613-6016-80						
Parts for Flushed Shaft Seal									
40	1	Seal housing	9612-1339-01						
41	2	Screw for seal housing	9611-99-0203						
42	2	Tube	9612-3589-15						
Service kit for single shaft seal									
	□	Service kit, EPDM	9611-92-2487						
	□	Service kit, NBR	9611-92-2488						
	□	Service kit, FPM.....	9611-92-2489						
	□	Service kit, FEP	9611-92-2490						
Service kit for flushed shaft seal									
	○	Service kit, EPDM	9611-92-2495						
	○	Service kit, NBR	9611-92-2496						
	○	Service kit, FPM.....	9611-92-2497						
	○	Service kit, FEP	9611-92-2498						
Service kit SIC/SIC for single shaft seal									
	○	Service kit, EPDM	9611-92-2827						
	○	Service kit, NBR	9611-92-2828						
	○	Service kit, FPM.....	9611-92-2829						
	○	Service kit, FEP	9611-92-2830						
Service kit SIC/SIC for flushed shaft seal									
	○	Service kit, EPDM	9611-92-2831						
	○	Service kit, NBR	9611-92-2832						
	○	Service kit, FPM.....	9611-92-2833						
	○	Service kit, FEP	9611-92-2834						

Recommended Spare parts: Service kits Shaft seal: See page 10-11.
 Conversion kit, single to flushed shaft seal 9611-92-2469=10+40+41+42+43+44+45
 Parts marked with □/○ are included in the service kits.

*This page shows an exploded drawing of SolidC-4.
The drawing includes all items of the pump.*



The drawing and the parts list include all items.

Pos.	Qty.	Denomination	10Hp	15-20Hp	25-30Hp
7	1	Shaft	9612-9139-01	9612-9140-01	9612-9140-01
10	1	Drive ring, Plastic Single shaft seal	9612-1377-01	9612-1377-01	9612-1377-01
	1	Drive ring, SS Single shaft seal	9612-9268-01	9612-9268-01	9612-9268-01
	1	Drive ring, SS Flushed shaft seal	9612-1397-01	9612-1397-01	9612-1397-01
16	1	Adaptor	9612-9454-07	9612-9454-08	9612-9454-09
17	4	Screw for motorflange	9611-99-4413	9611-99-4414	9611-99-4414
20	4	Nut for backplate	9611-99-0353	9611-99-0353	9611-99-0353
21	4	Washer for backplate	9611-99-0786	9611-99-0786	9611-99-0786
22	2	Safety guard	9612-9153-01	9612-9153-01	9612-9153-01
25	1	Backplate	9612-9114-12	9612-9114-12	9612-9114-12
26□○	1	O-ring for casing, EPDM	9611-99-4253	9611-99-4253	9611-99-4253
		(standard)			
	1	O-ring for casing, NBR	9611-99-4254	9611-99-4254	9611-99-4254
	1	O-ring for casing, FPM	9611-99-4255	9611-99-4255	9611-99-4255
	1	O-ring for casing, FEP	9611-99-4256	9611-99-4256	9611-99-4256
29	1	Pump casing, Tri-clamp	9612-9102-04	9612-9102-04	9612-9101-22
36	1	Impeller screw	9612-3627-01	9612-3627-01	9612-3627-01
37	1	Impeller	9612-9124-06	9612-9124-06	9612-9124-06
38□○	1	O-ring for impeller screw, EPDM	9611-99-2750	9611-99-2750	9611-99-2750
		(standard)			
	1	O-ring for impeller screw, NBR	9611-99-2751	9611-99-2751	9611-99-2751
	1	O-ring for impeller screw, FPM	9611-99-2752	9611-99-2752	9611-99-2752
	1	O-ring for impeller screw, FEP	9611-99-3539	9611-99-3539	9611-99-3539
55	1	Clamp set	9612-9154-08	9612-9154-08	9612-9154-08
60	1	Comp. Ring	9612-9142-05	9612-9144-01	9612-9144-01
61	4	Screw for comp. Ring	9611-99-4259	9611-99-4259	9611-99-4259
64	1	Motor flange	9612-9160-07	9612-9160-08	9612-9160-09
65	4	Screw for adaptor	9611-99-4399	9611-99-4399	9611-99-4399
66	4	Spring washer for adaptor	9611-99-1888	9611-99-1888	9611-99-1888
71	4	Spring washer for motorflange	9611-99-4417	9611-99-4417	9611-99-4417
legs					
70	2	Bracket set stainless steel	481663	481665	481669
		Bracket set carbon steel	481662	481664	481668

Pos.	Qty.	Denomination	10Hp	15Hp	20Hp	25Hp	30Hp	
1	1	Motor 3600rpm	9613-6016-28	9613-6016-29	9613-6016-30	9613-6016-31	9613-6016-32	
Pos.	Qty.	Denomination	1.5Hp	2Hp	3Hp	5Hp	7.5Hp	10Hp
1	1	Motor 1800rpm	9613-6016-88	9613-6016-89	9613-6016-90	9613-6016-91	9613-6016-92	9613-6016-93
3/60/208/230-460 - Standard								

Accessories

1	Tool for seal	9612-9036-01
1	Impeller gauge	9613-6016-80

Parts for Flushed Shaft Seal

40	1	Seal housing	9612-1339-01
42	2	Tube	9612-3589-15
41	2	Screw for seal housing	9611-99-0203

Service kit for single shaft seal

□	Service kit, EPDM	9611-92-2503
□	Service kit, NBR	9611-92-2504
□	Service kit, FPM	9611-92-2505
□	Service kit, FEP	9611-92-2506

Service kit for flushed shaft seal

○	Service kit, EPDM	9611-92-2511
○	Service kit, NBR	9611-92-2512
○	Service kit, FPM	9611-92-2513
○	Service kit, FEP	9611-92-2514

Service kit SIC/SIC for single shaft seal

○	Service kit, EPDM	9611-92-2835
○	Service kit, NBR	9611-92-2836
○	Service kit, FPM	9611-92-2837
○	Service kit, FEP	9611-92-2838

Service kit SIC/SIC for flushed shaft seal

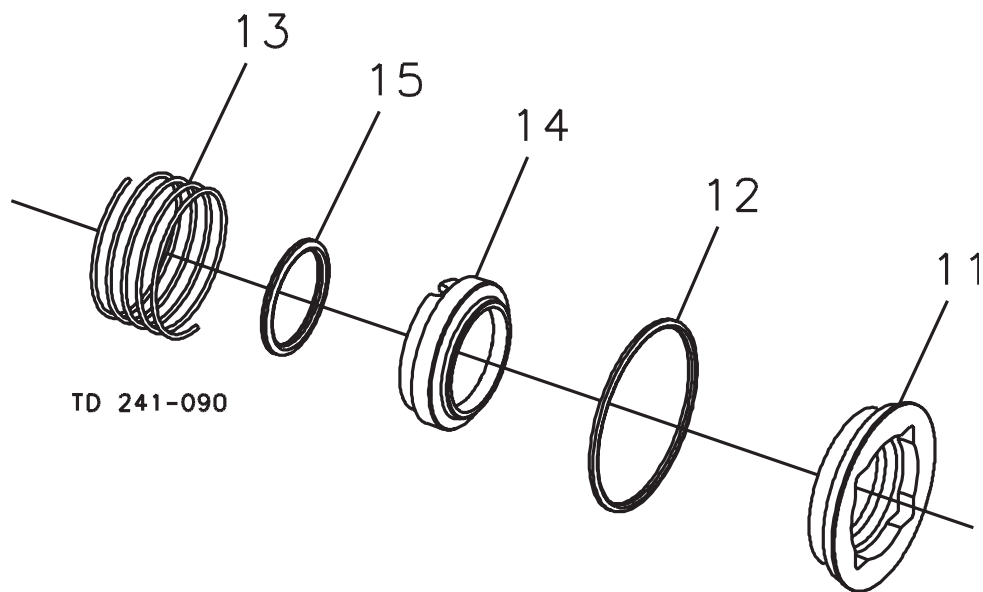
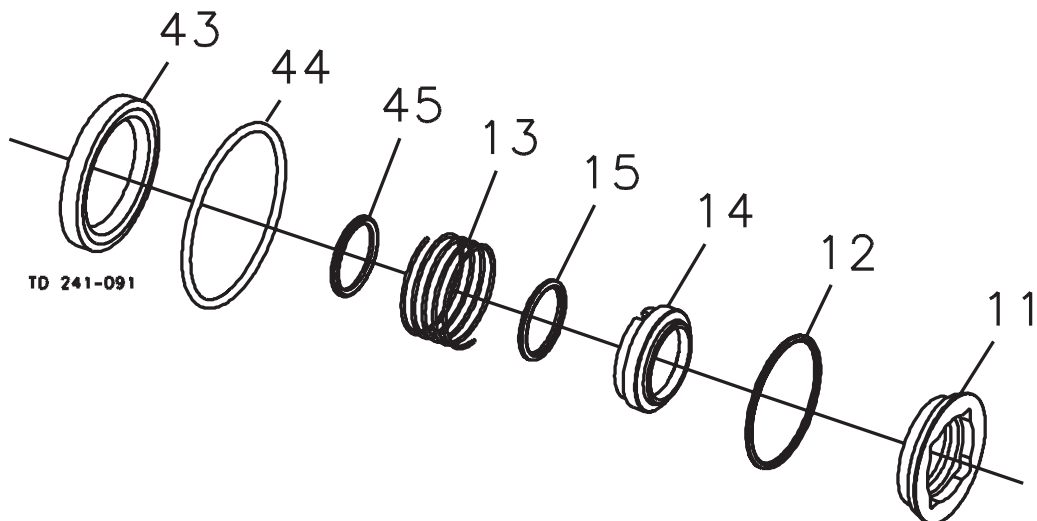
○	Service kit, EPDM	9611-92-2839
○	Service kit, NBR	9611-92-2840
○	Service kit, FPM	9611-92-2841
○	Service kit, FEP	9611-92-2842

Recommended Spare parts: Service kits 900243/10. Shaft seal: See page 10-11.

Conversion kit, single to flushed shaft seal 9611-92-2469=10+40+41+42+43+44+45

Parts marked with □/○ are included in the service kits.

*This page shows an exploded drawing of SolidC shaft seals.
The drawing includes all items of the seals.*

Single Shaft Seal**Flushed Shaft Seal**

The drawing and the parts list include all items.

Pos.	Qty.	Denomination	1.5-30Hp	Pos.	Qty.	Denomination	1.5-30Hp
Single shaft seal				OComplete shaft seal , NBR			
□Complete shaft seal, EPDM (standard) 9612-1296-09				11	1	Stationary seal ring, SiC	9612-1379-01
11	1	Stationary seal ring, SiC	9612-1379-01	12	1	O-ring, NBR	9611-99-2151
12	1	O-ring, EPDM	9611-99-2149	13	1	Spring	9612-1376-01
13	1	Spring	9612-1376-01	14	1	Rotating seal ring, Carbon	9612-1364-01
14	1	Rotating seal ring, Carbon	9612-1364-01	15	1	O-ring, NBR	9611-99-2147
15	1	O-ring, EPDM	9611-99-2145	44	1	O-ring for seal housing EPDM	9611-99-2153
□Complete shaft seal , NBR				45	1	O-ring for drive ring	9611-99-2145
11	1	Stationary seal ring, SiC	9612-1379-01	43	1	Lip seal	9611-99-3587
12	1	O-ring, NBR	9611-99-2151	OComplete shaft seal , FPM			
13	1	Spring	9612-1376-01	11	1	Stationary seal ring, SiC	9612-1379-01
14	1	Rotating seal ring, Carbon	9612-1364-01	12	1	O-ring, FPM	9611-99-2150
15	1	O-ring, NBR	9611-99-2147	13	1	Spring	9612-1376-01
□Complete shaft seal , FPM				14	1	Rotating seal ring, Carbon	9612-1364-01
11	1	Stationary seal ring, SiC	9612-1379-01	15	1	O-ring, FPM	9611-99-2146
12	1	O-ring, FPM	9611-99-2150	44	1	O-ring for seal housing EPDM	9611-99-2153
13	1	Spring	9612-1376-01	45	1	O-ring for drive ring	9611-99-2145
14	1	Rotating seal ring, Carbon	9612-1364-01	43	1	Lip seal	9611-99-3587
15	1	O-ring, FPM	9611-99-2146	OComplete shaft seal , FEP			
□Complete shaft seal , FEP				11	1	Stationary seal ring, SiC	9612-1379-01
11	1	Stationary seal ring, SiC	9612-1379-01	12	1	O-ring, FEP	9611-99-2152
12	1	O-ring, FEP	9611-99-2152	13	1	Spring	9612-1376-01
13	1	Spring	9612-1376-01	14	1	Rotating seal ring, Carbon	9612-1364-01
14	1	Rotating seal ring, Carbon	9612-1364-01	15	1	O-ring, FEP	9611-99-2148
15	1	O-ring, FEP	9611-99-2148	44	1	O-ring for seal housing EPDM	9611-99-2153
Alternatives for single shaft seal				45	1	O-ring for drive ring	9611-99-2145
Complete shaft seal, EPDM (standard) 9612-1296-05				43	1	Lip seal	9611-99-3587
11	1	Stationary seal ring, SiC	9612-1379-01	Alternatives for flushed shaft seal			
12	1	O-ring, EPDM	9611-99-2149	Complete shaft seal , EPDM			
13	1	Spring	9612-1376-01	11	1	Stationary seal ring, SiC	9612-1379-01
14	1	Rotating seal ring, SiC	9612-1364-02	12	1	O-ring, EPDM	9611-99-2149
15	1	O-ring, EPDM	9611-99-2145	13	1	Spring	9612-1376-01
Complete shaft seal , NBR				14	1	Rotating seal ring, SiC	9612-1364-02
11	1	Stationary seal ring, SiC	9612-1379-01	15	1	O-ring, EPDM	9611-99-2145
12	1	O-ring, NBR	9611-99-2151	44	1	O-ring for seal housing EPDM	9611-99-2153
13	1	Spring	9612-1376-01	45	1	O-ring for drive ring	9611-99-2145
14	1	Rotating seal ring, SiC	9612-1364-02	43	1	Lip seal	9611-99-3587
15	1	O-ring, NBR	9611-99-2147	Complete shaft seal , NBR			
Complete shaft seal , FPM				11	1	Stationary seal ring, SiC	9612-1379-01
11	1	Stationary seal ring, SiC	9612-1379-01	12	1	O-ring, NBR	9611-99-2151
12	1	O-ring, FPM	9611-99-2150	13	1	Spring	9612-1376-01
13	1	Spring	9612-1376-01	14	1	Rotating seal ring, SiC	9612-1364-02
14	1	Rotating seal ring, SiC	9612-1364-02	15	1	O-ring, NBR	9611-99-2147
15	1	O-ring, FPM	9611-99-2146	44	1	O-ring for seal housing EPDM	9611-99-2153
Complete shaft seal , FEP				45	1	O-ring for drive ring	9611-99-2145
11	1	Stationary seal ring, SiC	9612-1379-01	43	1	Lip seal	9611-99-3587
12	1	O-ring, FEP	9611-99-2152	Complete shaft seal , FPM			
13	1	Spring	9612-1376-01	11	1	Stationary seal ring, SiC	9612-1379-01
14	1	Rotating seal ring, SiC	9612-1364-02	12	1	O-ring, FPM	9611-99-2150
15	1	O-ring, FEP	9611-99-2148	13	1	Spring	9612-1376-01
Flushed shaft seal				14	1	Rotating seal ring, SiC	9612-1364-02
OComplete shaft seal , EPDM (standard) 9612-9193-01				15	1	O-ring, FPM	9611-99-2146
11	1	Stationary seal ring, SiC	9612-1379-01	44	1	O-ring for seal housing EPDM	9611-99-2153
12	1	O-ring, EPDM	9611-99-2149	45	1	O-ring for drive ring	9611-99-2145
13	1	Spring	9612-1376-01	43	1	Lip seal	9611-99-3587
14	1	Rotating seal ring, Carbon	9612-1364-01	Complete shaft seal , FEP			
15	1	O-ring, EPDM	9611-99-2145	11	1	Stationary seal ring, SiC	9612-1379-01
44	1	O-ring for seal housing EPDM	9611-99-2153	12	1	O-ring, FEP	9611-99-2152
45	1	O-ring for drive ring	9611-99-2145	13	1	Spring	9612-1376-01
43	1	Lip seal	9611-99-3587	14	1	Rotating seal ring, SiC	9612-1364-02
				15	1	O-ring, FEP	9611-99-2148
				44	1	O-ring for seal housing EPDM	9611-99-2153
				45	1	O-ring for drive ring	9611-99-2145
				43	1	Lip seal	9611-99-3587