

NON-RETURN VALVE

- Non-return valve with full bore
- Quick disassembly using an SMS type nut

SPECIFICATIONS

DIMENSIONS

- SMS - DIN - US
- from DN 1/2" to DN 125 (5")

MATERIALS

Body - plug - spring: stainless steel 316L
 Plug seal: PFA
 Seal: fluorinated elastomer (FKM) - EPDM - PFA

CONNECTIONS

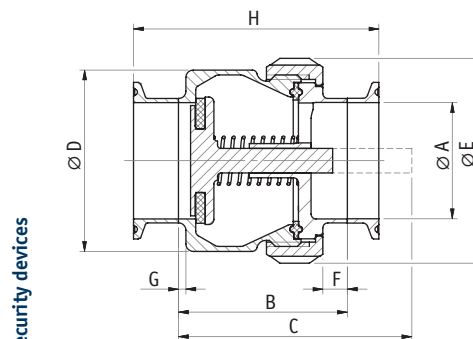
TYPES OF CONNECTION STANDARD
 Welded SMS - DIN - US standard
 Threaded SMS - DIN
 Liner-nut SMS - DIN
 Clamp US standard

OPTION

Metal/metal tightness (requiring pairing)

SERVICE CONDITIONS

- Max. temperature: +120°C
- Min. temperature: 0°C
- Max. working pressure: 10 bar (1000 kPa)
- Counterpressure: 90 mbar



Security devices

Non-return valve

TUBE ØA	NON-RETURN VALVE						
	B	C (release)	ØD	ØE	F	G	H
SMS 22.6/25	74.5	107	59.5	70	13	9	100.5
SMS 30/32	70.5	107	59.5	70	9	9	96.5
SMS 35.6/38	70.5	107	59.5	70	9	9	96.5
SMS 48.5/51	74.5	115	74	84	10	9	100.5
SMS 60.3/63.5	108.5	158	110	114	14	10	134.5
SMS 72/76	104.5	158	110	114	10	10	130.5
SMS 100/104	123.5	201	148	148	11	11	154.5
DIN 26/28	74.5	107	59.5	70	13	9	100.5
DIN 38/40	65.5	102	59.5	70	9	9	91.5
DIN 50/53	74.5	115	74	84	10	9	100.5
DIN 66/70	104.5	158	110	114	10	10	130.5
DIN 81/85	127.5	201	148	148	15	11	153.5
DIN 100/104	123.5	201	148	148	11	11	154.5
DIN 125/129	141.5	229	178	178	9	11	172.5
US 1/2" (9.4/12.7)	48.5	71	40	49.5	6	5	74.5
US 3/4" (15.75/19.05)	48.5	71	40	49.5	6	5	74.5
US 1" (22.1/25.4)	74.5	107	59.5	70	13	9	100.5
US 1 1/2" (34.8/38.1)	70.5	107	59.5	70	9	9	96.5
US 2" (47.5/50.8)	74.5	115	74	84	10	9	100.5
US 2 1/2" (60.2/63.5)	108.5	158	110	114	14	10	134.5
US 3" (72.9/76.1)	104.5	158	110	114	10	10	130.5
US 4" (97.4/101.6)	123.5	201	148	148	11	11	154.5

Distributed by:

NELSON JAMESON INC.

800-826-8302 nelsonjameson.com