



## Product Instructions

RS96010BPW / RS96010DE / RS96010LET /  
RS9605LET / RS9604LET / RS9601LET / RS96010NB / RS9604NB

-  **(EN) Swab-Sampler**
-  **(FR) Ecouvillon**
-  **(DE) Probestupfer**
-  **(IT) Tampone per campionamento**
-  **(ES) Hisopo muestreador**
-  **(NL) Swab-Sampler**
-  **(SV) Swab-Sampler**
-  **(DA) Svaber til prøveudtagning**
-  **(NO) Prøvesvaber**
-  **(FI) Swab-Sampler Näytteenkeräystikku**
-  **(PT) Swab-Sampler**
-  **(EL) Στυλεός Δειγματοληψίας**
-  **(PL) Próbnik do wymazów**
-  **(HU) Swab-Sampler kenetvevő**
-  **(CZ) Stěrový vzorkovač**
-  **(RO) Tampon de recoltare**
-  **(RU) Ультратампон**
-  **(TR) Svab Örnekleyici**
-  **(JA) スwabサンプラー**
-  **(ZH) 采样棒**
-  **(TH) ก้านสวอป**
-  **(KO) 스왑-샘플러**

# Product Instructions

## Swab-Sampler

### PRODUCT DESCRIPTION

Pre-measured volume of enrichment broth or neutralizing solution in a tube with a screw-cap and attached swab.

For Laboratory Use Only. Material Safety Data Sheet available.

### SAFETY

The user should read, understand, and follow all safety information in the instructions. Retain the safety instructions for future reference.

**⚠ WARNING** Indicates a hazardous situation, which, if not avoided, could result in death or serious injury and/or property damage.

**NOTICE** Indicates a potentially hazardous situation which, if not avoided, could result in property damage.

### ⚠ WARNING

**To reduce the risks associated with environmental contamination:**

- Follow current industry standards and local regulations for disposal of contaminated waste.

**To reduce the risks associated with exposure to biohazards:**

- Dispose of samples according to all applicable government regulations and applicable laboratory procedures.

**To reduce the risk associated with false negatives resulting in the use of contaminated carcass or environmental surfaces for food or beverage products:**

- Always reference package label for storage instruction and expiration date.
- Always reference product instruction for usage.

**To reduce the risks associated with exposure to chemicals and biohazards:**

- Always follow standard good laboratory safety practices (GLP<sup>1</sup> or ISO 17025<sup>2</sup>), including proper containment procedures, wearing appropriate protective apparel while handling testing materials and test samples.

### NOTICE

**To reduce the risk of false-positive results due to cross contaminated carcass or environmental surfaces for food or beverage products that may result in re-testing or the rejection of food or beverage product:**

- Do not touch the swab or swab stick to any unintended surface.

**To reduce the risk of cross contamination from reuse of sample handling device:**

- Do not use the same swab more than once.

### USER RESPONSIBILITY

Users are responsible for familiarizing themselves with product instructions and information. Visit our website at [www.3M.com/foodsafety](http://www.3M.com/foodsafety), or contact your local 3M representative or distributor for more information.

When selecting a test method, it is important to recognize that external factors such as sampling methods, testing protocols, sample preparation, handling, and laboratory technique may influence results.

It is the user's responsibility in selecting any test method or product to evaluate a sufficient number of samples with the appropriate matrices and microbial challenges to satisfy the user that the chosen test method meets the user's criteria.

It is also the user's responsibility to determine that any test methods and results meet its customers' and suppliers' requirements.

As with any test method, results obtained from use of any 3M Food Safety product do not constitute a guarantee of the quality of the matrices or processes tested.

### LIMITATION OF WARRANTIES / LIMITED REMEDY

EXCEPT AS EXPRESSLY STATED IN A LIMITED WARRANTY SECTION OF INDIVIDUAL PRODUCT PACKAGING, 3M DISCLAIMS ALL EXPRESS AND IMPLIED WARRANTIES, INCLUDING BUT NOT LIMITED TO, ANY WARRANTIES OF MERCHANTABILITY OR FITNESS FOR A PARTICULAR USE. If any 3M Food Safety Product is defective, 3M or its authorized distributor will, at its option, replace or refund the purchase price of the product. These are your exclusive remedies. You must promptly notify 3M within sixty days of discovery of any suspected defects in a product and return it to 3M. Please call Customer Service (1-800-328-1671 in the U.S.) or your official 3M Food Safety representative for a Returned Goods Authorization.

## LIMITATION OF 3M LIABILITY

3M WILL NOT BE LIABLE FOR ANY LOSS OR DAMAGES, WHETHER DIRECT, INDIRECT, SPECIAL, INCIDENTAL OR CONSEQUENTIAL DAMAGES, INCLUDING BUT NOT LIMITED TO LOST PROFITS. In no event shall 3M's liability under any legal theory exceed the purchase price of the product alleged to be defective.

## STORAGE AND DISPOSAL

**Storage:** Refer to package label for storage information.

**Disposal:** Follow current industry standards and local regulations for disposal of contaminated waste. Consult the Material Safety Data Sheet for additional information.

Product Description	Volume	REF
3M™ Swab-Sampler with Buffered Peptone Water Broth	10 mL	RS96010BPW
3M™ Swab-Sampler with D/E Neutralizing Broth	10 mL	RS96010DE
3M™ Swab-Sampler with Lethen Broth	10 mL	RS96010LET
3M™ Swab-Sampler with Lethen Broth	5 mL	RS9605LET
3M™ Swab-Sampler with Lethen Broth	4 mL	RS9604LET
3M™ Swab-Sampler with Lethen Broth	1 mL	RS9601LET
3M™ Swab-Sampler with Neutralizing Buffer	10 mL	RS96010NB
3M™ Swab-Sampler with Neutralizing Buffer	4 mL	RS9604NB

## INSTRUCTIONS FOR USE

1. Unscrew cap from tube.
2. Aseptically remove swab from tube.
3. Aseptically swab across the entire sampling surface<sup>3,4,5,6</sup> while rotating swab.
4. Return swab to tube.
5. Repeat step 2. Change direction 90° and aseptically swab the same sampled surface while rotating swab. Repeat step 4.
6. Repeat step 2. Change direction 45° and aseptically swab the same sampled surface while rotating swab. Repeat step 4.
7. Screw cap tight to close.
8. Following user established procedures, remove any remaining enrichment broth or neutralizing solution residue from the sampled surface.

## REFERENCES

1. U.S. Food and Drug Administration. Code of Federal Regulations, Title 21, Part 58. Good Laboratory Practice for Nonclinical Laboratory Studies.
2. ISO/IEC 17025. General requirements for the competence of testing and calibration laboratories.
3. American Public Health Association - Compendium of Methods for the Microbiological Examination of Foods - Chapter 3: Microbiological Monitoring of the Food Processing Environment, 4th edition.
4. US Food and Drug Administration - Bacteriological Analytical Method (available online at <http://www.fda.gov/Food/ScienceResearch/LaboratoryMethods/BacteriologicalAnalyticalManualBAM/default.html>).
5. United States Department of Agriculture - Microbiological Lab Guidebook - Chapters 4.04, 5.04, and 8.07.
6. American Public Health Association - Standard Methods for the Examination of Dairy Products - Chapter 13: Microbiological Tests for Equipment, Containers, Water, and Air, 17th edition.

Refer to the current version of the standard methods listed above.

## EXPLANATION OF SYMBOLS



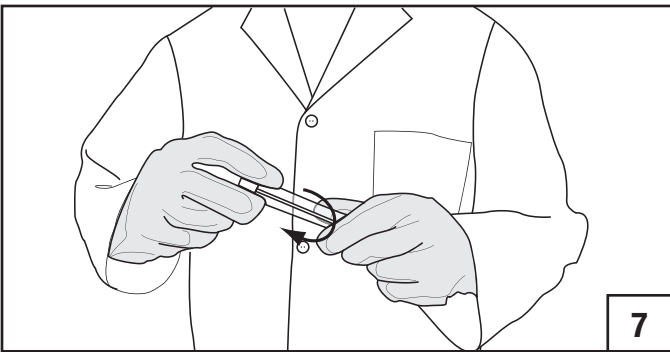
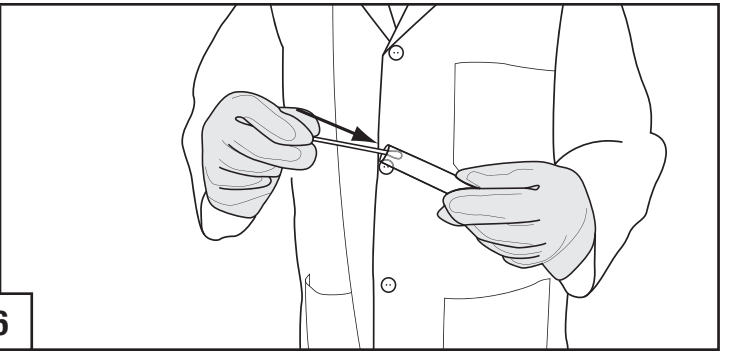
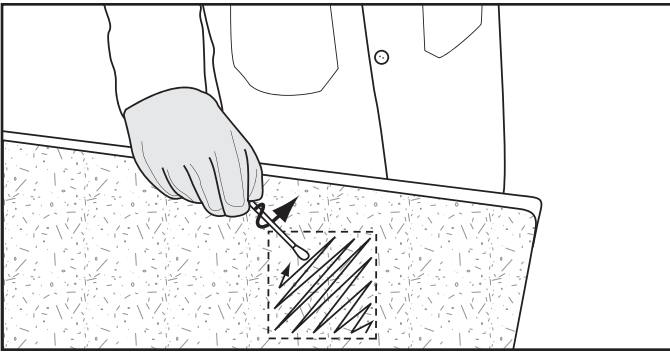
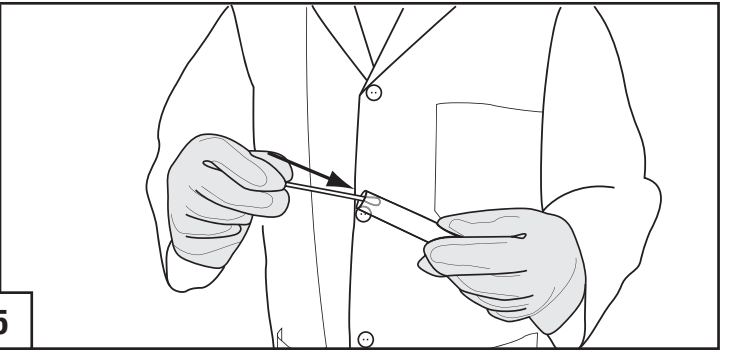
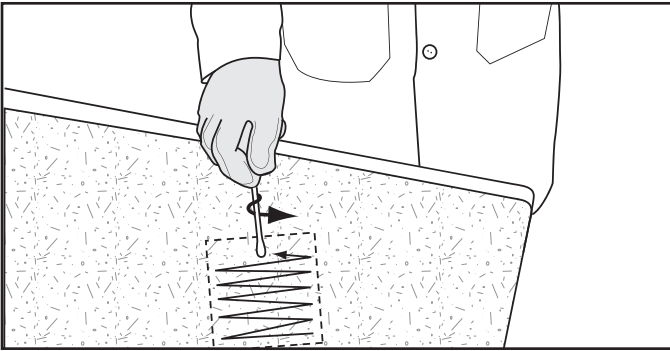
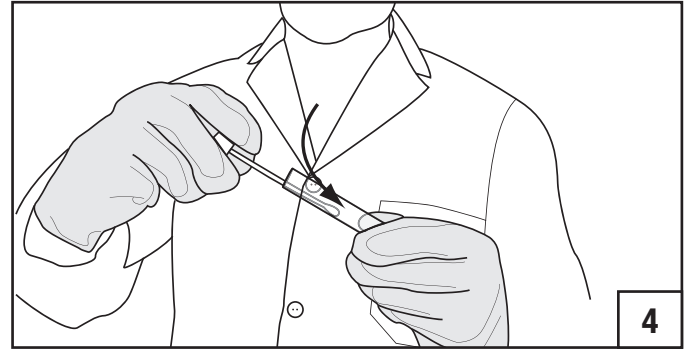
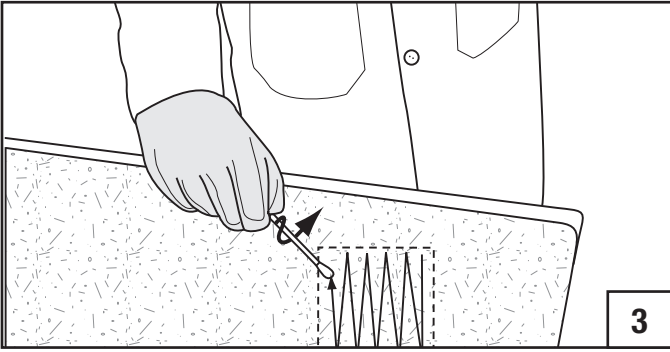
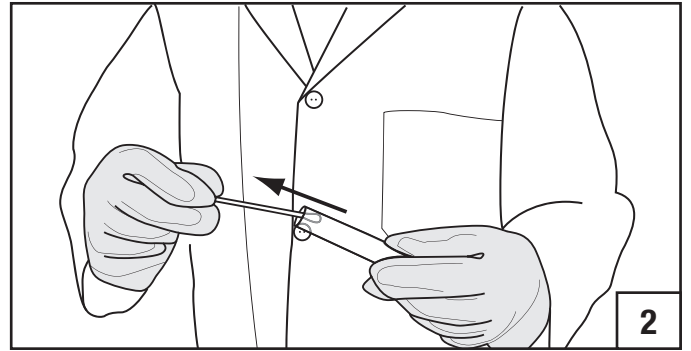
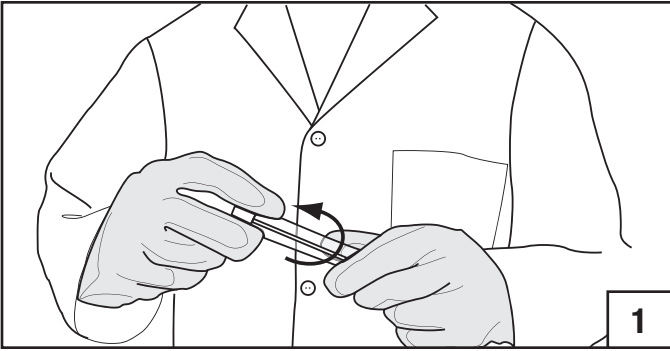
Consult instructions for use



The lot in a box and the hourglass symbols are symbols that represent lot number and expiration date. The hourglass is followed by a year, month, and day which represents the expiration date (year, month, and day: YYYY- MM-DD). The entire line after the LOT represents the lot number (YYYY- MM AZ).



Storage conditions



## 3M Food Safety

### 3M United States

3M Center  
Bldg. 275-5W-05  
St. Paul, MN 55144-1000  
USA  
1-800-328-6553

### 3M Canada

Post Office Box 5757  
London, Ontario N6A 4T1  
Canada  
1-800-563-2921

### 3M Europe and MEA

3M Deutschland GmbH  
Carl-Schurz - Strasse 1  
D41453 Neuss/Germany  
+49-2131-14-3000

### 3M Latin America

3M Center  
Bldg. 275-5W-05  
St. Paul, MN 55144-1000  
USA  
1-954-340-8263

### 3M Asia Pacific

No 1, Yishun Avenue 7  
Singapore, 768923  
65-64508869

### 3M Japan

3M Health Care Limited  
33-1, Tamagawadai 2-chrome  
Setagaya-ku, Tokyo  
158-8583, Japan  
81-570-011-321

### 3M Australia

Bldg A, 1 Rivett Road  
North Ryde, NSW 2113  
Australia  
61 1300 363 878



### 3M Health Care

2510 Conway Ave  
St. Paul, MN 55144 USA  
[www.3M.com/foodsafety](http://www.3M.com/foodsafety)

© 2013, 3M. All rights reserved.  
3M is a trademark of 3M. Used under license in Canada.  
34-8711-5787-0