

3A Sanitary Manual Ball Valves

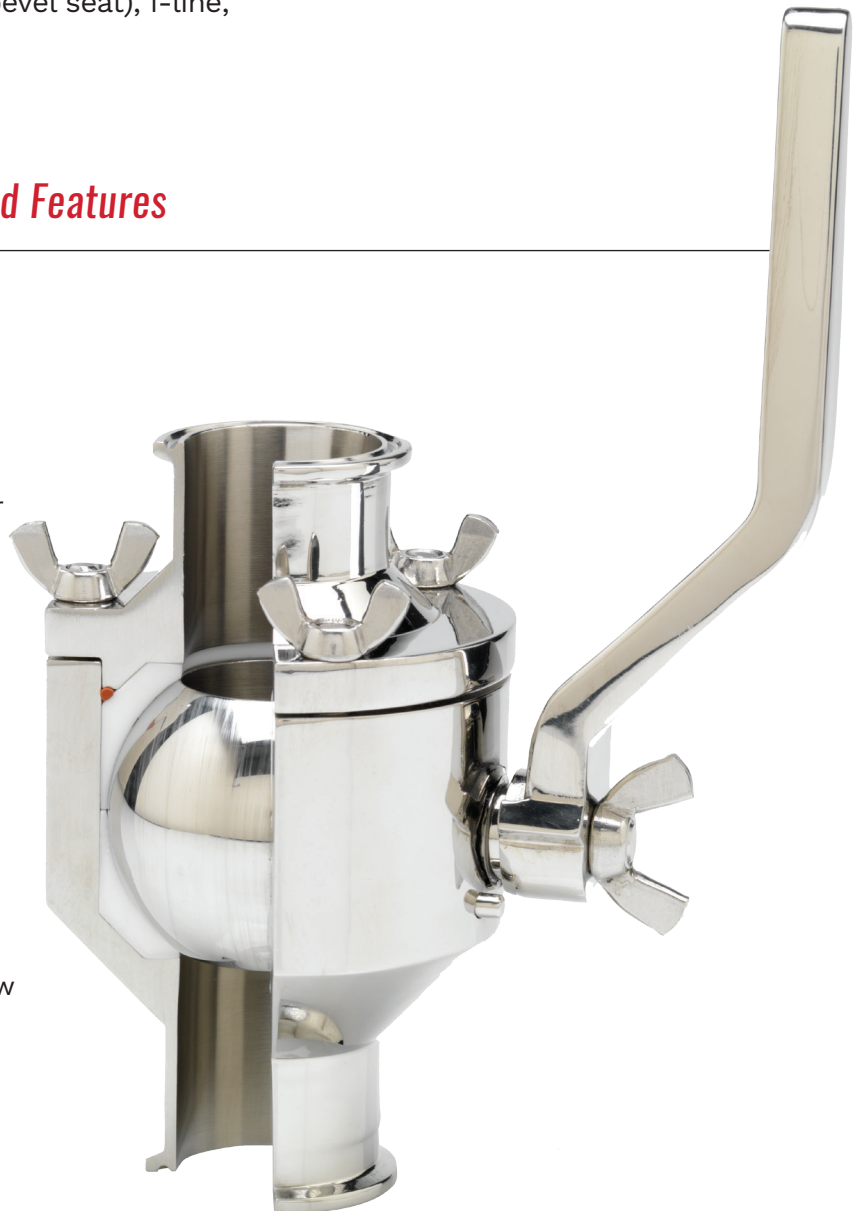
Lee Sanitary Manual Ball Valves are precision made of Type 316-L stainless steel and are designed for corrosion-resistant, high-sanitary conditions in the food, drug, cosmetic, pharmaceutical, beverage, chemical and metal-detection industries worldwide. They are 3A Sanitary certified and USDA approved.

All Lee valves are available with various optional connection fittings such as sanitary Tri-Clamp®, Acme (bevel seat), I-line, flanged, and butt-weld.

3A Sanitary Manual Ball Valve Standard Features

All Lee Manual Ball Valve Styles Feature:

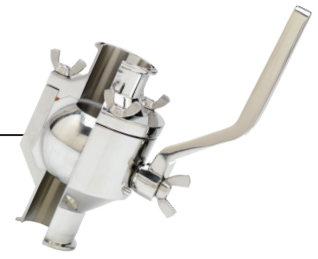
- 3A Sanitary certified and USDA approved
- T-316-L stainless steel contact parts with PTFE or Mica-filled PTFE Seals
- Sanitary #4 I.D./O.D. finish
- Fast breakdown (no special tools required) for cleaning and maintenance
- Minimal replacement parts — reduce maintenance time and costs
- Extremely easy to clean
- Maximum pressure: 300 PSIG
- Maximum temperature: 450°F
- Long term sanitary service if operating, maintenance and cleaning instructions are followed
- Handle doubles as a wrench to tighten packing nut
- Full-port design for unobstructed product flow
- Available with various optional connection fittings such as sanitary Tri-Clamp®, Acme (bevel seat), I-line, and flanged.



3A SANITARY MANUAL BALL VALVES

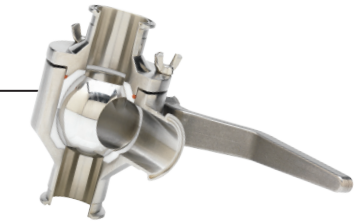
Two-Way (2FT) In-line Valves

- ½" through 4" full flow port sizes which eliminate product flow restrictions



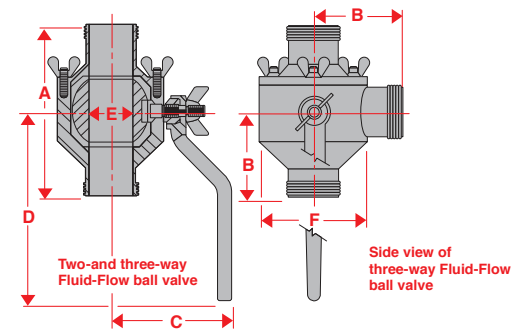
Three-way (3FT) In-line Diverter Valves

- Three-way valves simplify multiple tank filling and draining operations
- ½" through 4" full flow port sizes which eliminate product flow restrictions



VALVE SIZE	A	B	C	D	E	F	WEIGHT (LBS.)	
							TWO- WAY	THREE- WAY
1 ½"	5 13/16"	2 29/32"	4 1/8"	6 7/16"	1 ½"	3 5/8"	7	6 ½
2"	6 13/16"	3 13/32"	4 ½"	6 7/16"	2"	4 1/8"	9	8 ½
3"	9 7/16"	4 23/32"	5"	8 1/4"	3"	5 5/8"	21	20
4"	13 1/16"	6 17/32"	6 3/8"	16"	4"	7 1/4"	50 ½	48 ½

Three-way valves have a working pressure to 150 PSIG and a maximum working temperature of 300° F (for increased pressures to 300 PSIG and temperatures to 450° F, request Mica-filled seals).

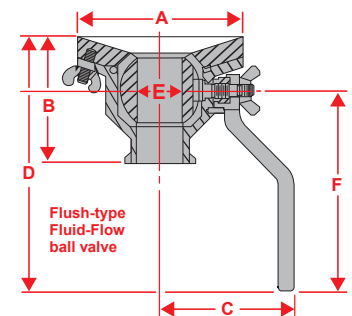


Flush-Mounted (BFT) Kettle/Tank Valves

- 1 ½" through 4" full flow port sizes which eliminate product flow restrictions
- Mounting flange is easily welded to any style tank bottom (vacuum rated mounting flanges available)



VALVE SIZE	A	B	C	D	E	F	TOTAL WEIGHT (LBS.)	FLANGE WEIGHT (LBS.)
1 ½"	5 ½"	4 5/8"	4 1/8"	8 3/16"	1 ½"	6 7/16"	9	3 ½
2"	6"	5 3/16"	4 ½"	8 1/4"	2"	6 7/16"	12	4
3"	8"	7 1/16"	5"	10 5/8"	3"	8 1/4"	26	7 ½
4"	10 ½"	9 5/8"	6 3/8"	19 1/8"	4"	16"	61 ½	13



3A Sanitary Valve Options & Accessories

While the style of valve you choose will have its own set of features, you also have the opportunity to choose from a few other options.

Outlets

- Tri-Clamp® (standard)
- I-line
- Acme (bevel set)
- Flange