



## InSite™ | Salmonella

InSite Salmonella is a quick and easy test for the detection of *Salmonella* species in food processing environments. The test contains a liquid medium formulated with growth enhancers and chromogenic compounds selective for *Salmonella* species. A color change from purple to bright yellow in 24 – 48 hours is presumptive positive for *Salmonella* species. InSite Salmonella is a self-contained screening test which is easy to perform while reducing wait time, labor costs, and materials.

### Benefits:

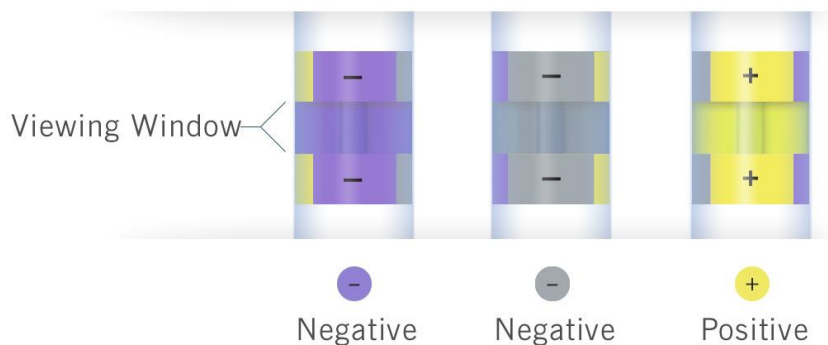
- Easy-to-use with no preparation steps required
- Large sponge tip maximizes sample collection for accurate results
- Eliminates costly outside lab fees for an equivalent test
- Color results are easy to interpret – bright yellow indicates presence of *Salmonella* species
- Positive results in as little as 24 hours
- Presumptive negative results in 48 hours
- Self contained tube eliminates risk of contamination
- 9 month shelf life at refrigerated temperatures (2 – 8 °C)

### Sensitivity:

- Detects *Salmonella* species down to 1-10 CFU, even in the presence of high numbers of competing organisms

### Interpretation:

- InSite Salmonella features a viewing window with a result chart for easy interpretation. Results are presumptive positive when the Insite Salmonella media turns bright yellow.



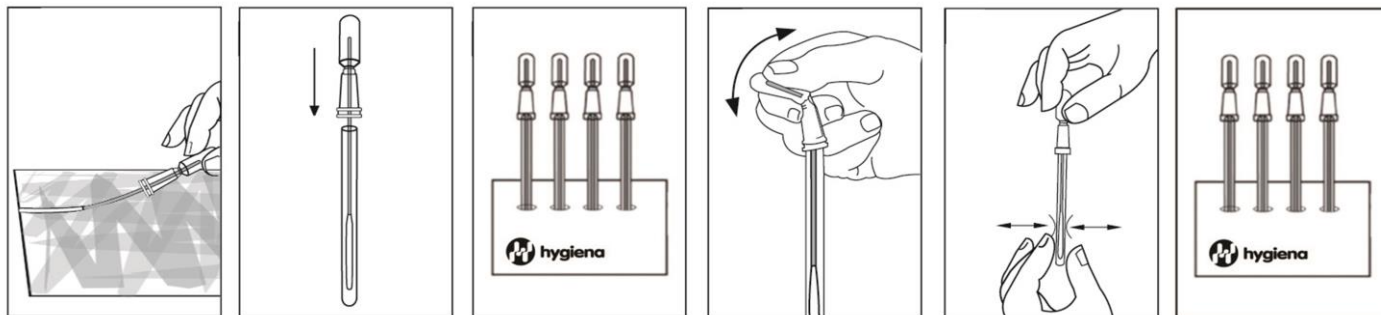
Watch an instructional demo at [youtube.com/HygienaTV](https://youtube.com/HygienaTV)



Find support documents, instructional videos, and more at [www.hygiena.com](http://www.hygiena.com)

Catalog No.	Description	Quantity
IS050	InSite Salmonella Environmental Salmonella Species Test	50

## InSite Salmonella Procedure:



## Related Products:



### Digital Dry Block Incubators

Digital incubators are capable of up to 105°C and flexible for any Hygiena test device. Available in two sizes. Blocks are sold separately.



### InSite Listeria

InSite Listeria is a color-changing *Listeria* species test for environmental surfaces. A color change of the liquid media to brown/black in 24-48 hours indicates presumptive positive presence of *Listeria* species.



### MicroSnap Coliform & *E. coli*

MicroSnap Coliform & *E. coli* are rapid tests for detection and enumeration of Coliform bacteria. Results are available in 8 hours or less, depending upon required level of detection. Single figure organisms can be detected in 8 hours, enabling MicroSnap to give results in the same working day or shift. MicroSnap Coliform & *E. coli* detect down to 1-10 CFU. AOAC-R/ Performance Tested Method #073102.



### MicroSnap Total

MicroSnap Total delivers total viable count (TVC) results in 7 hours, providing an advantage of knowing microbial levels in the same working day or shift. MicroSnap Total detects down to <100 CFU of Gram positive and Gram negative aerobic and facultative anaerobic bacteria.



### MicroSnap Enterobacteriaceae

MicroSnap EB delivers results in 7 hours, providing an advantage of knowing microbial levels in the same working day or shift. MicroSnap EB detects down to 1-50 CFU.

Catalog No.	Description	Quantity
See catalog	Digital Dry Block Incubators	1
IL050/IL100	InSite Listeria Environmental <i>Listeria</i> Species Test	50/100
See catalog	MicroSnap Coliform	100
See catalog	MicroSnap Total	100
See catalog	MicroSnap Enterobacteriaceae	100

Distributed by: