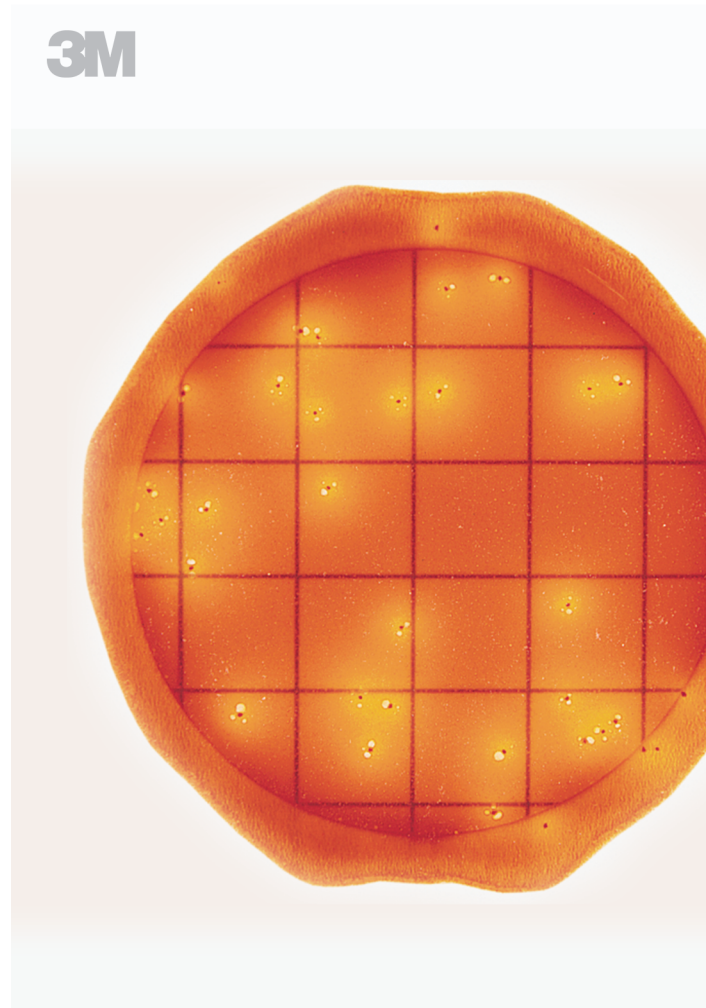




Petrifilm™

Interpretation Guide

The 3M™ Petrifilm™ Rapid Coliform Count Plate is a sample-ready-culture-medium system that contains Violet Red Bile (VRB) nutrients, a cold-water-soluble gelling agent, a pH indicator to detect acid and a tetrazolium indicator that facilitates colony enumeration. 3M Petrifilm Rapid Coliform Count Plates are useful for the enumeration of coliform bacteria in the food and dairy industries.



RCC

Rapid Coliform Count Plate



The United States Food and Drug Administration (FDA) Bacteriological Analytical Manual (BAM) define coliforms as Gram negative rods, which produce acid and gas from lactose fermentation. As colonies grow on the 3M™ Petrifilm™ Rapid Coliform Count Plate and produce acid, the pH indicator in the plate changes from red-orange to yellow, providing a presumptive indication of coliforms per FDA/BAM definition. Gas trapped around coliform colonies indicates confirmed coliforms per FDA/BAM definition.

ISO defines coliforms by their ability to grow in method-specific, selective media. ISO method 4832 enumerates typical coliform colonies on Violet Red Bile Lactose (VRBL) agar, with confirmation of atypical colonies. On the 3M Petrifilm Rapid Coliform Count Plate, these coliforms are indicated by yellow acid zones or red colonies with or without gas production. ISO method 4831, enumerating coliforms by the most probable number (MPN) method, defines coliforms by their ability to grow and produce gas in the conditions described in the standard. On the 3M Petrifilm Rapid Coliform Count Plate, these coliforms are indicated by red colonies with gas.

Please refer to the product instructions for additional information.

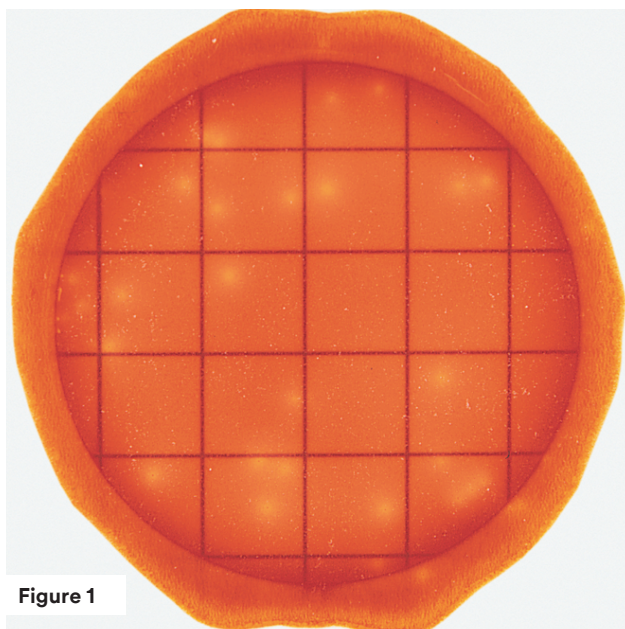


Figure 1

At 6 hours of incubation.

Coliform enumeration by acid zones (6-14 hours)

Yellow acid zones may begin to appear as early as 6 hours. If coliforms are present, yellow zones will appear and diffuse throughout incubation.

- **Interpretation when comparing to FDA/BAM methods:**
Count yellow acid zones with or without red centers as presumptive coliforms.
- **Interpretation when comparing to ISO 4832:**
Count yellow acid zones with or without red center as coliforms.
Final results at 14 hours.

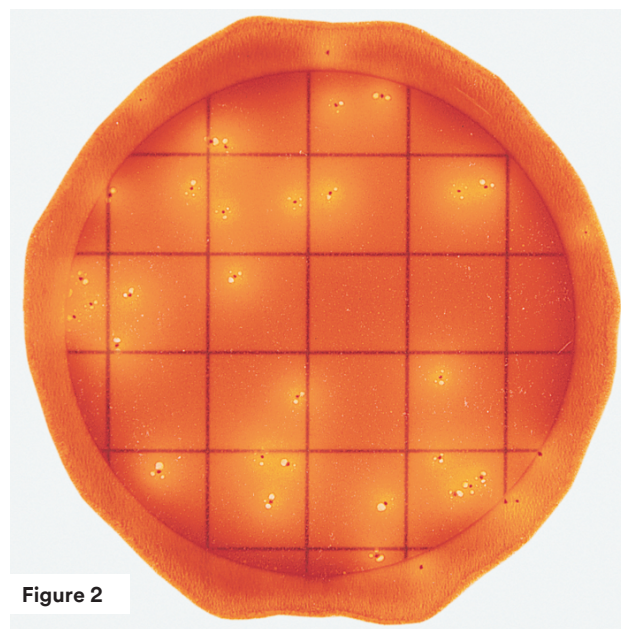


Figure 2

At 14 hours of incubation.

Coliform colony enumeration (8-24h)

Red colonies with or without gas may begin to appear as soon as 8h and continue to grow throughout incubation.

- **Interpretation when comparing to FDA/BAM methods:**
Count red colonies associated with gas as confirmed coliforms whenever they appear.
- **Interpretation when comparing to ISO 4831:**
Count red colonies associated with gas as coliforms.
Final results at 24 ± 2 hours, except for processed pork.
- **Interpretation when comparing to ISO 4832:**
Count red colonies with or without gas as coliforms.
Final results at 24 ± 2 hours.

Early reading of bacterial growth on 3M Petrifilm Rapid Coliform Count Plates (measured by acid and gas production) depends on the type of bacteria, their metabolic state and their concentration.

Enumeration of Acid Zones (6-14 hours)

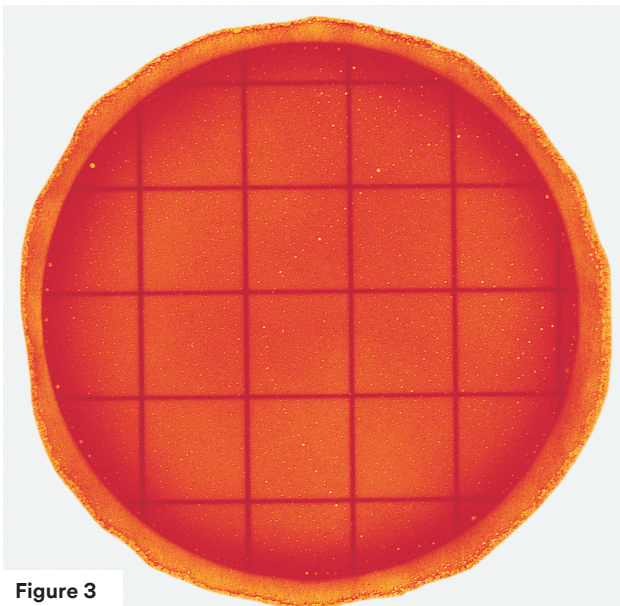


Figure 3

Coliform count = 0

Notice the gel changes in figures 3 through 10. As the coliforms produce acid, the color of the gel changes from red-orange to orange-yellow.

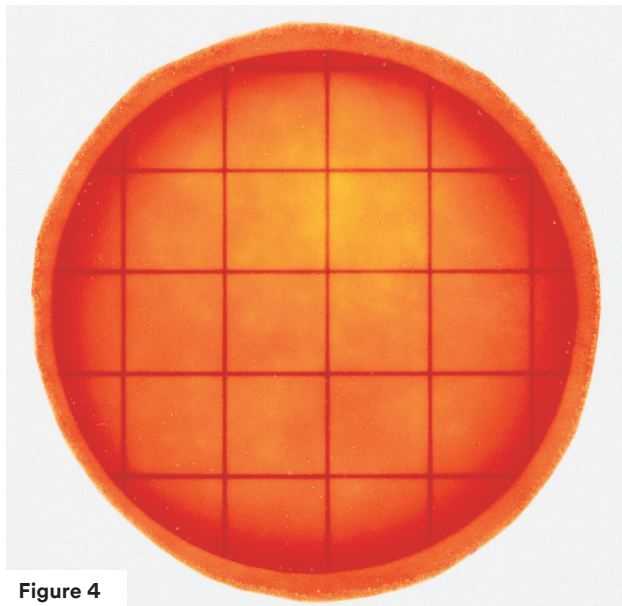


Figure 4

Estimated coliform count = too numerous to count (TNTC)

High concentrations of coliforms may cause the entire growth area to turn yellow after 6 hours of incubation.

For a more accurate count, further dilution of the sample may be necessary.

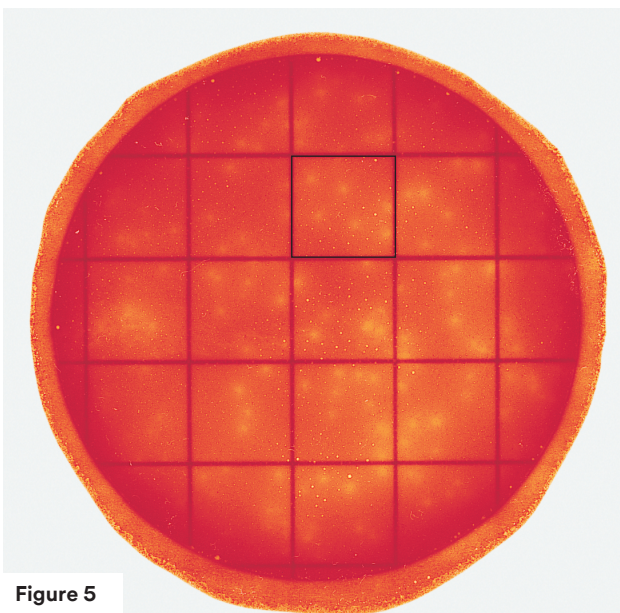


Figure 5

Estimated coliform count = 120

Some coliforms produce large amounts of acid. For these organisms, fusion of the acid zones could occur with as few as 20 colonies per plate. Estimates can be made on plates containing greater than 50 discrete acid zones.

The circular growth area on a 3M Petrifilm Rapid Coliform Count Plate is approximately 20cm². Estimates can be made on plates by counting the number of acid zones in one or more representative squares, determining the average number per square and multiplying by 20. There are 6 acid zones in the square outlined in Figure 5.

For a more accurate count, further dilution of the sample may be necessary.

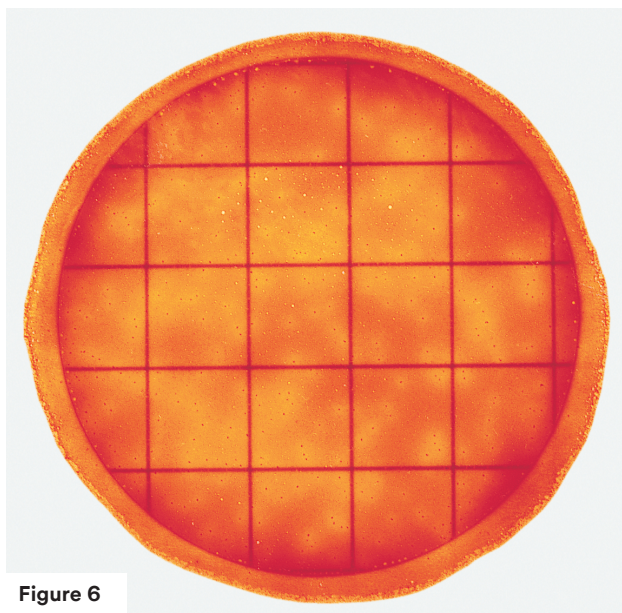


Figure 6

Estimated coliform count = 280

Red colonies will begin to appear within the acid zones as the coliforms continue to grow.

For a more accurate count, further dilution of the sample may be necessary.

Enumeration of colonies with gas (8-24 hours)

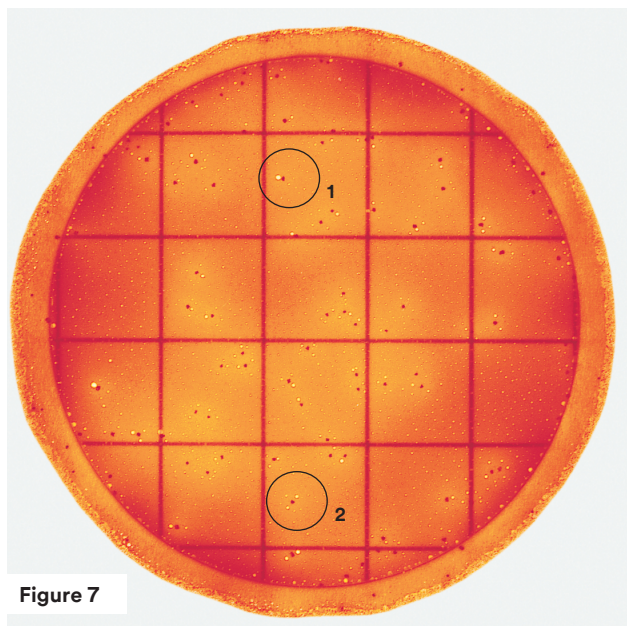


Figure 7

Coliform count = 64

Colonies and gas bubbles may be smaller around the edge. Count colonies with, or without gas depending on the method you are following. A colony is associated with a gas bubble(s) if it is within one colony diameter away or in a ring pattern around the colony. See Circles 1 and 2.

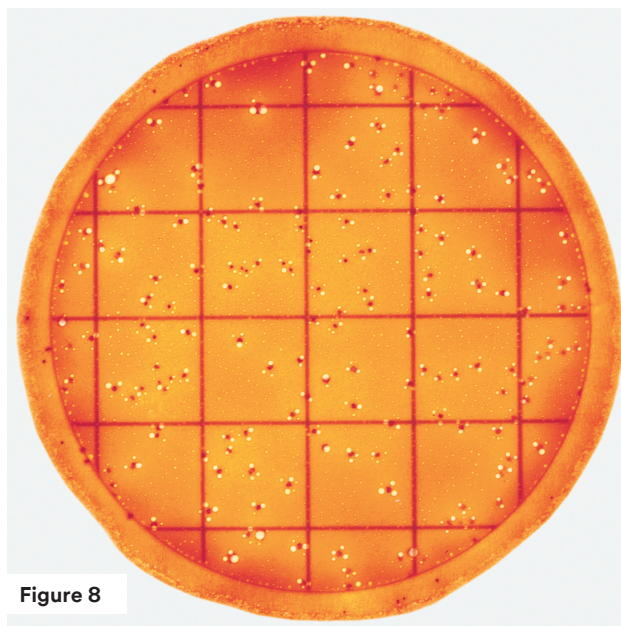


Figure 8

Estimated coliform count = 164

Figures 7 and 8 show the results from the same concentration of different organisms incubated the same amount of time. Distinct red colonies with acid zones appear on both plates. The organisms in Figure 8 appear to ferment lactose to produce gas more readily than those in Figure 7.

For a more accurate count, further dilution of the sample may be necessary.

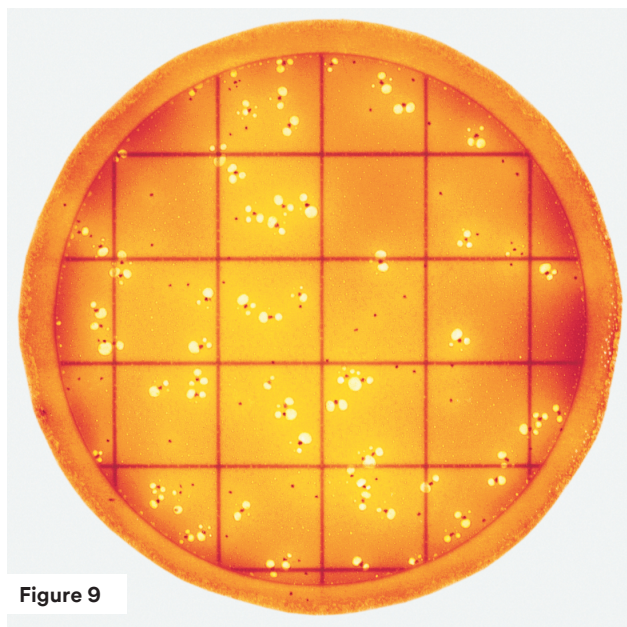


Figure 9

Method Specific Counts

Figure 9 is another example of counting colonies with or without gas bubbles. The count depends on the method you follow.

As compared to FDA/BAM methods, confirmed coliforms colonies with gas = 72.

As compared to ISO 4831, coliforms are colonies with gas = 72.

As compared to ISO 4832, coliforms are colonies with and without gas = 128.

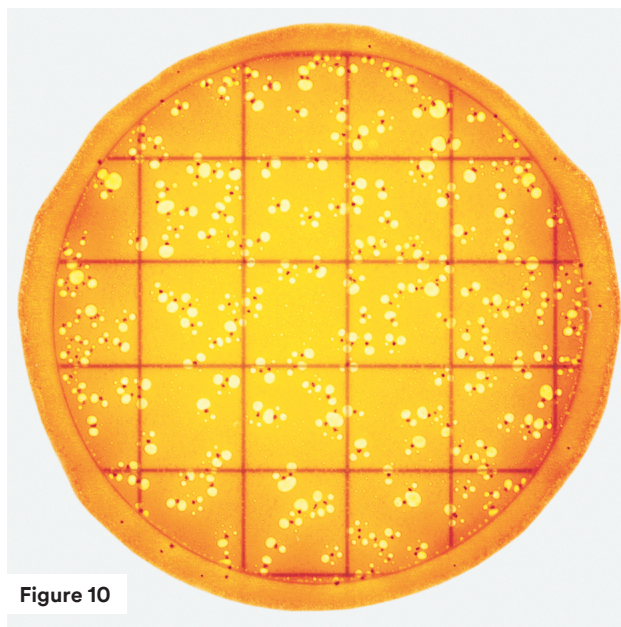


Figure 10

Estimated coliform count = 240

For a more accurate count, further dilution of the sample may be necessary.

Too Numerous To Count (TNTC)

For a more accurate count, further dilution of the sample may be necessary.

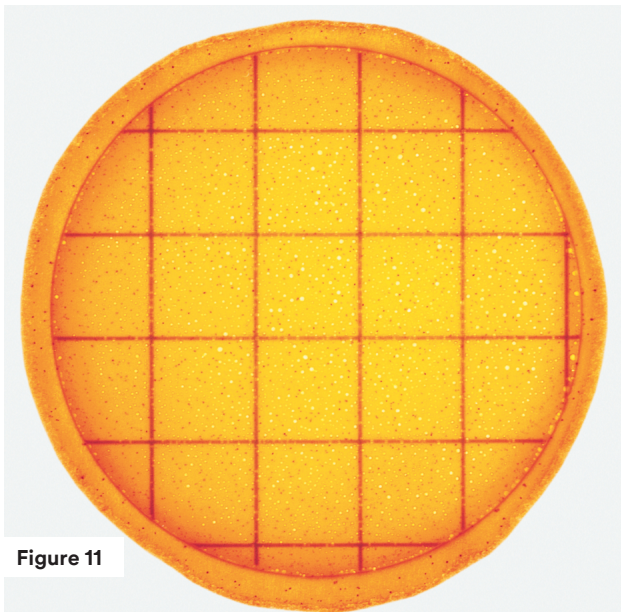


Figure 11

Coliform count = TNTC

3M Petrifilm Rapid Coliform Count Plates with colonies that are TNTC have one or more of the following characteristics: change in gel color from red-orange to orange-yellow, many small colonies, many gas bubbles.

For a more accurate count, further dilution of the sample may be necessary.

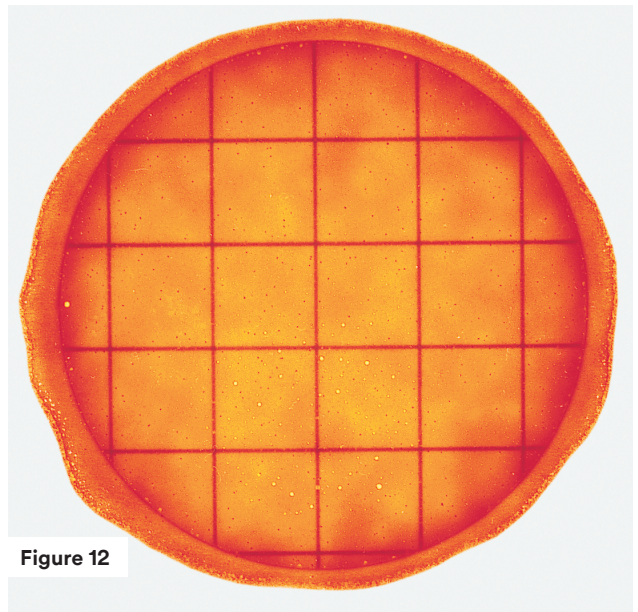


Figure 12

Coliform count = TNTC

The 3M Petrifilm Rapid Coliform Count Plate in Figure 12 has two characteristics indicating a TNTC result: change in gel color and many small colonies.

For a more accurate count, further dilution of the sample may be necessary.

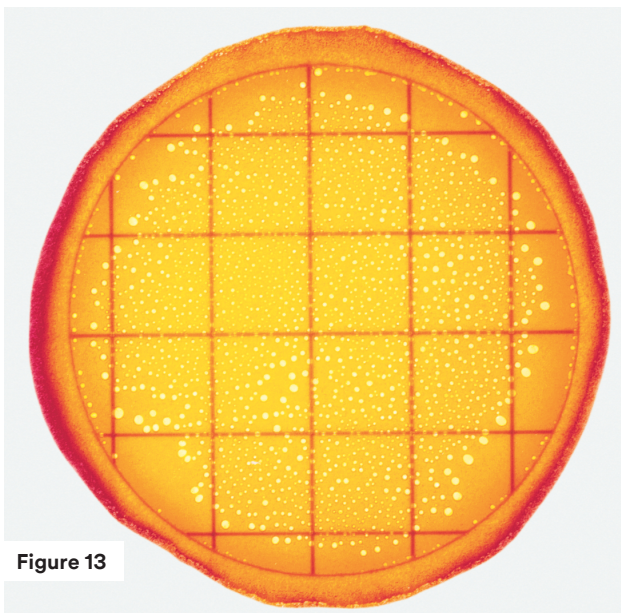


Figure 13

Coliform count = TNTC

In Figure 13, the count is so high that individual colonies do not show. A change in the gel color to yellow and the many gas bubbles indicate a TNTC result.

For a more accurate count, further dilution of the sample may be necessary.

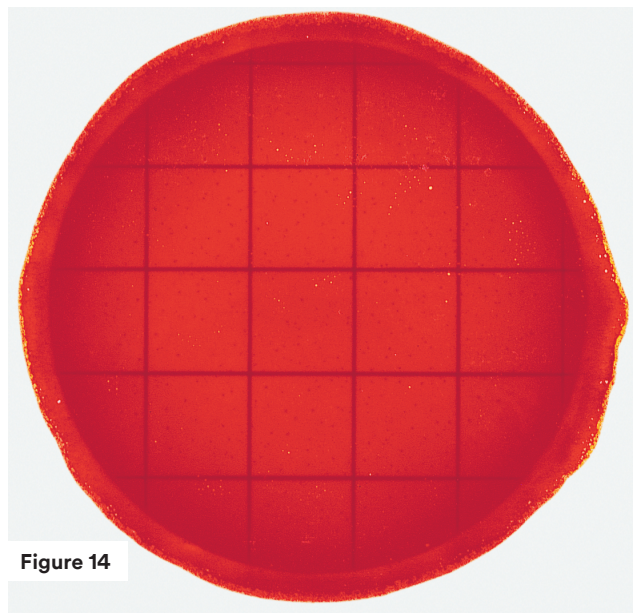


Figure 14

Coliform count = 0

Figure 14 shows a 3M Petrifilm Rapid Coliform Count Plate with a high number of Gram-negative non-coliform colonies. When high numbers of organisms that do not ferment lactose are present, the gel may appear dark red.

The optimal growth for most bacteria occurs near pH 7.0. Dilutions of low pH products require pH adjustments to pH 6.5 - 7.5.

Figures 15 and 16 show examples of fresh yogurt plated after pH adjustment. Inhibitors in the media prevent the Gram-positive starter culture from growing, but acid produced by the starter culture may still change the background color of the gel from red-orange to orange-yellow, mimicking an early TNTC result. Monitor plates containing fresh yogurt culture during incubation for further indication of TNTC coliform growth.

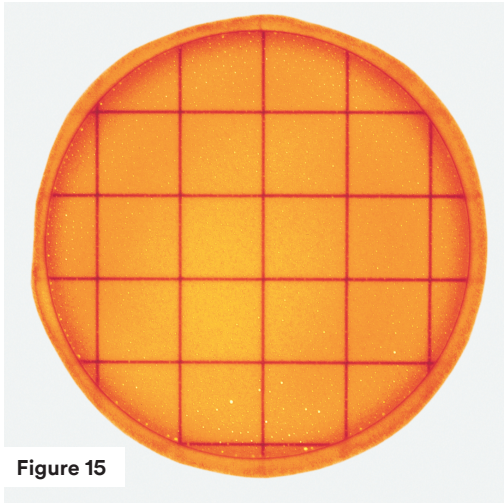


Figure 15

Coliform count = 0

Compare the negative plate above to the TNTC plates on the previous page. Note that no colonies or gas bubbles are present in Figure 15 to indicate a TNTC result.

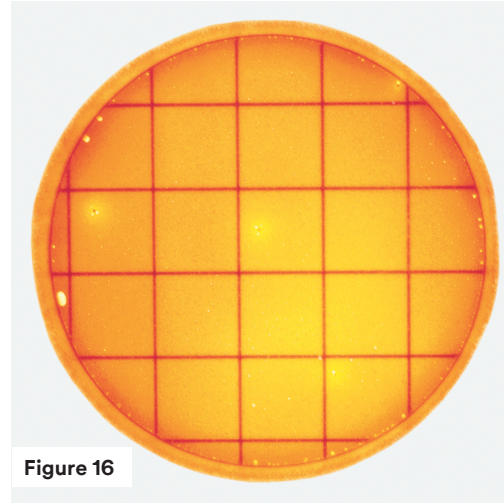


Figure 16

Coliform count = 4

Despite the change in the gel color, acid produced by the coliforms is still easily seen, as shown in Figure 16.

Food particles are often irregularly shaped and are not associated with gas bubbles.

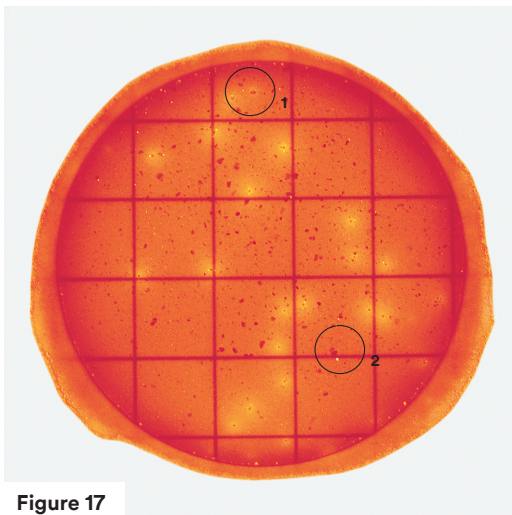


Figure 17

Coliform count = 11

Figure 17 is an early reading of a dilution of paprika. Circle 1 shows an acid zone around a red, irregularly-shaped food particle. Some foods may contain acidic particles that react with the pH indicator. Circle 2 shows a bubble near a red, irregularly-shaped food particle - but no acid zone. Neither should be counted as a colony.

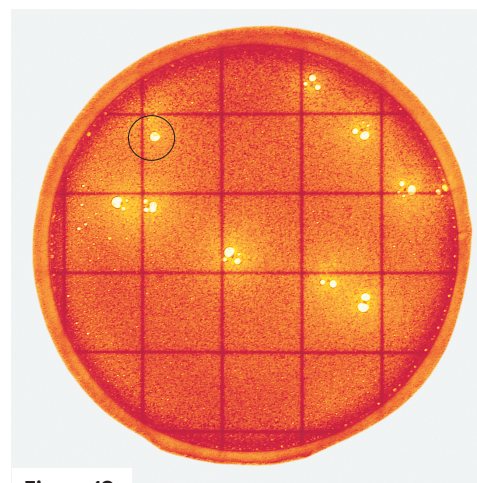


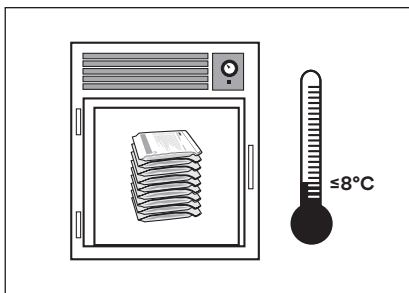
Figure 18

Coliform count = 10

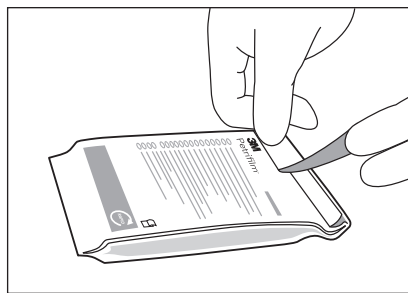
A dilution of chocolate is shown in Figure 18. Zones of acid associated with colonies will continue to expand during incubation. Gas bubbles associated with colonies are another criteria that will aid in the identification of coliforms. Gas bubbles may outline the colony as shown in the Circle. Enumeration with or without gas is method dependent.

Reminders for Use

Storage

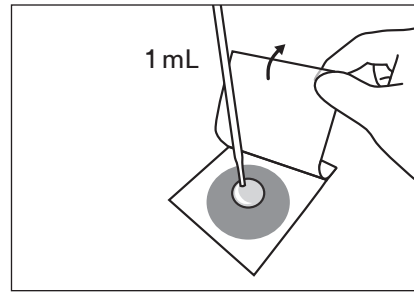


- 1 Store unopened packages at $\leq 8^{\circ}\text{C}$ ($\leq 46^{\circ}\text{F}$). Use before expiration date on package.

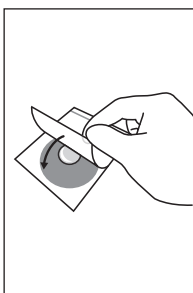


- 2 To seal opened package, fold the end of the pouch over and apply adhesive tape. Keep resealed package at $\leq 25^{\circ}\text{C}$ ($\leq 77^{\circ}\text{F}$) and $\leq 50\%$ RH. **Do not refrigerate opened packages.** Use plates within one month after opening.

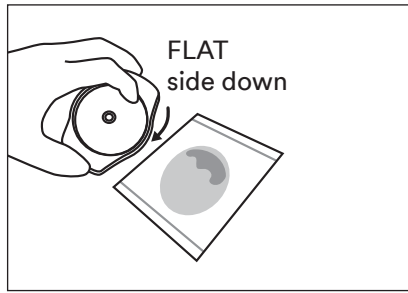
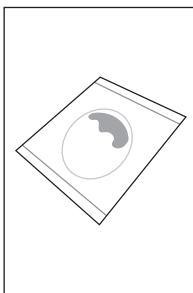
Inoculation



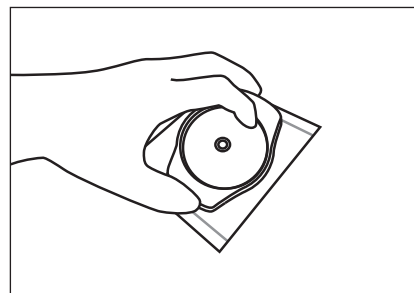
- 3 Place 3M Petrifilm Rapid Coliform Count Plate on level surface. Lift top film. With pipette perpendicular to the plate, place 1mL of sample onto center of bottom film.



- 4 Carefully roll top film down to avoid trapping air bubbles. Do not let top film drop.

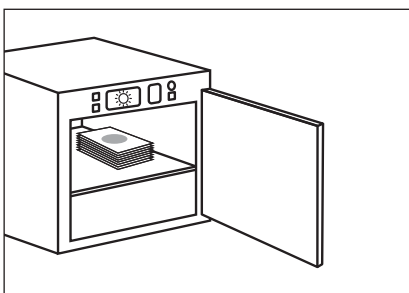


- 5 With flat side down, place 3M™ Petrifilm™ Spreaders on top film over inoculum.



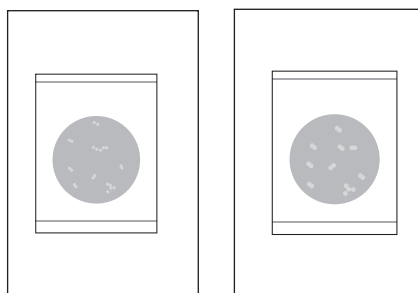
- 6 Gently apply pressure on 3M Petrifilm Spreaders to distribute over circular area before gel is formed. Do not twist or slide the spreader. Lift the spreader and leave the plate undisturbed for at least one minute to permit the gel to form.

Incubation



- 7 Incubate plates with clear side up in stacks of up to 20. **See product instructions for third party validated methods.**

Interpretation



- 8 3M Petrifilm Rapid Coliform Count Plates can be counted with a standard colony counter or other illuminated magnifier. Colonies may be isolated for further identification. Lift top film and pick the colony from the gel.

Use Appropriate Sterile Diluents

Butterfield's phosphate buffered dilution water, 0.1% peptone water, peptone salt diluent, saline solution (0.85-0.90%), bisulfite-free letheen broth or distilled water.

For optimal growth and recovery of the microorganisms, adjust the pH of the sample suspension to 6.5-7.5

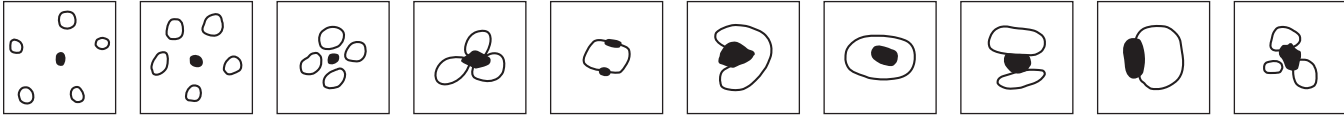
Do not use buffers containing citrate, bisulfite or thiosulfate with the 3M Petrifilm Rapid Coliform Count Plates; they can inhibit growth.

If citrate buffer is indicated in the standard procedure, substitute with one of the buffers listed above, warmed to 40-45°C

Bubbles

The illustrations below show examples of various patterns associated with gas producing colonies.

All should be enumerated.



3M Food Safety offers a full line of products to accomplish a variety of your microbial testing needs. For more product information, visit us at 3M.com/foodsafety/Petrifilm or call 1-800-328-6553.



Distributed by:



800-826-8302 nelsonjameson.com

User's Responsibilities: 3M Petrifilm Plate performance has not been evaluated with all combinations of microbial flora, incubation conditions and food matrices. It is the user's responsibility to determine that any test methods and results meet the user's requirements. Should re-printing of this Interpretation Guide be necessary, user's print settings may impact picture and color quality.

For detailed CAUTIONS, DISCLAIMER OF WARRANTIES/LIMITED REMEDY and LIMITATION OF 3M LIABILITY, STORAGE AND DISPOSAL information and INSTRUCTIONS FOR USE, see Product's package insert.

3M and Petrifilm are trademarks of 3M. Used under license in Canada. Please recycle. Printed in USA. © 3M 2017. All rights reserved. 70-2008-8014-7 (Rev-1017)