

3M Food Safety
3M™ Petrifilm™ *Salmonella* Express System



Easier
Salmonella Detection,
Faster Confirmation.

It's About
Time.



3M



Because
Food Safety
can't wait.

A decorative graphic element consisting of a small circle with a dotted line extending from it, forming a right-angled shape, is located to the right of the text.


Introducing the 3M™ Petrifilm™ *Salmonella* Express System

The 3M™ Petrifilm™ *Salmonella* Express System provides qualitative detection and biochemical confirmation of *Salmonella* in enriched food and food process environmental samples. It eliminates time-consuming agar methods and gives you biochemical confirmation in as little as 44 hours—2X faster than traditional agar methods—with no special equipment.

The easy-to-use system consists of:

- 3M™ *Salmonella* Enrichment Base and 3M™ *Salmonella* Enrichment Supplement—a unique medium for recovery and growth of *Salmonella* species.
- 3M™ Petrifilm™ *Salmonella* Express Plate—a sample-ready, chromogenic culture medium that is selective and differential for *Salmonella* and provides a presumptive result.
- 3M™ Petrifilm™ *Salmonella* Express Confirmation Disk—contains a biochemical substrate that facilitates the biochemical confirmation of *Salmonella* species.



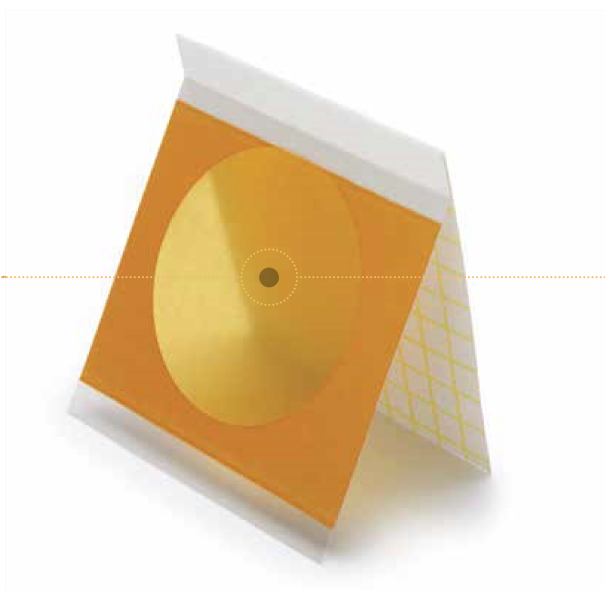
A photograph of several golden-brown fried chicken nuggets resting on a light-colored wooden surface. The nuggets are piled together, with some showing a slightly textured, breaded exterior. A thin, dotted orange line starts from a small circle on the right side of the nuggets, extends horizontally to the left, and then turns vertically down to another small circle on the left side of the nuggets.

A faster, simpler
all-in-one method for
pathogen testing.

The first qualitative 3M™ Petrifilm™ Plate for *Salmonella* detection in food and food process environmental samples

Using 3M Petrifilm Plate technology, 3M has created a pathogen solution for food testers around the world.

3M Petrifilm Plates are the #1 brand in food indicator testing. Ninety out of 100 of the Top Food Processing Companies in the U.S. use 3M Petrifilm Plates for their testing. Why? Because these easy-to-use plates eliminate the need to prepare, purchase and store agar dishes, helping to maximize laboratory productivity and efficiency, while delivering consistent, accurate results.



In-house biochemical confirmation

The 3M Petrifilm *Salmonella* Express System saves you time and money by allowing you to confirm multiple presumptive positive colonies at the same time, right in your lab. One disk can biochemically confirm all presumptive positive colonies on the plate with one test. And, there's no need to pick and transfer colonies to any other agar plates for testing with another technology or send them out to a reference lab for biochemical confirmation.

Greater consistency

Compared to the variability associated with agar preparation, 3M's standardized formula improves consistency across technicians, shifts and plants.

Longer shelf life

3M Petrifilm *Salmonella* Express Plates have a significantly longer expiration date than agar plates, which all too often must be thrown out before they're ever used.

Less space

Because they're so compact, 3M Petrifilm Plates take up 85% less space than agar plates, freeing up valuable room in your incubators, lab bench, refrigerators—and your waste stream. It's about time for that, too.





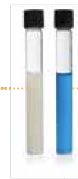
Twenty 3M™ Petrifilm™ Plates compared to 20 agar dishes.

Traditional Agar Method

(example: FDA BAM high microb)



Combine sample and enrichment medium. Incubate 24 ± 2 hrs @ 35°C .



Transfer enriched sample into Tetrathionate (TT) and R-V. Incubate R-V 24 ± 2 hrs @ $42^{\circ}\text{C} \pm 0.2^{\circ}\text{C}$, incubate TT 24 ± 2 hrs @ $43^{\circ} \pm 0.2^{\circ}\text{C}$.

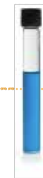


Get biochemically
confirmed
results

3M Petrifilm *Salmonella* Express



Combine sample and 3M *Salmonella* Enrichment Base plus 3M *Salmonella* Enrichment Supplement medium. Incubate 18 hrs @ 41.5°C .



Transfer enriched sample into R-V R10. Incubate 8 hrs @ 41.5°C .
(Skip this step for low background flora, processed foods.)



ial load foods)

Streak each selective broth onto selective agar plates (HE, BS, XLD). Incubate 22-50 hrs @ 35°C.



Read plates.



Transfer presumptive positive colonies onto TSI and LIA slants. Incubate. 24 ± 2 hrs @ 35°C.

TOTAL TIME TO NEG: 88-128 HRS.



Transfer presumptive colonies onto further biochemical and serological tests for confirmation.

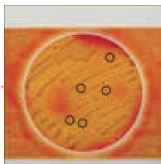
Total time to biochemical confirmation:
88-128 hrs

2X faster

than most traditional methods.

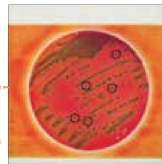
System

Hydrate plate, transfer sample and **streak** onto gel. Incubate for 24 ± 2 hrs @ 41.5°C.



Read plate. **Circle presumptive positives** on top film.

TOTAL TIME TO NEG:
40-44 HRS (low background, processed foods)
48-52 HRS (high background, unprocessed foods)



Biochemically confirm results: add confirmation disk to plate and incubate 4 hrs @ 41.5°C.

Total time to biochemical confirmation:
44-48 hrs
(low background, processed foods)
52-56 hrs
(high background, unprocessed foods)

Ordering Information

3M™ Petrifilm™ *Salmonella* Express System Plates and Disks

| Catalog Number | Description | Packout | Total | Product ID |
|----------------|--|---------------------------------|-------|----------------|
| 6536 | 3M™ Petrifilm™ <i>Salmonella</i> Express Plate | 25 plates/pouch, 2 pouches/box | 50 | 70-2007-6998-5 |
| 6537 | 3M™ Petrifilm™ <i>Salmonella</i> Express Plate | 25 plates/pouch, 8 pouches/case | 200 | 70-2007-6999-3 |
| 6538 | 3M™ Petrifilm™ <i>Salmonella</i> Express Confirmation Disk | 5 disks/pouch, 1 pouch/box | 5 | 70-2007-7000-9 |
| 6539 | 3M™ Petrifilm™ <i>Salmonella</i> Express Confirmation Disk | 5 disks/pouch, 5 pouches/case | 25 | 70-2007-7001-7 |

3M™ Petrifilm™ *Salmonella* Express System Enrichment Media

| Catalog Number | Description | Packout | Product ID |
|----------------|--|--------------------------|----------------|
| SEB500 | 3M™ <i>Salmonella</i> Enrichment Base | 500 grams/bottle, 1 each | 70-2007-7477-9 |
| SEB025 | 3M™ <i>Salmonella</i> Enrichment Base | 2.5 kg/bottle, 1 each | 70-2007-7478-7 |
| SESUP001 | 3M™ <i>Salmonella</i> Enrichment Base Supplement | 1 g/vial, 1 each | 70-2007-7435-7 |
| BP0288500 | 3M™ Rappaport-Vassiliadis R10 (R-V R10) Broth | 500g/bottle | 70-2007-5512-5 |

3M™ Petrifilm™ Spreader

| Catalog Number | Description | Packout | Product ID |
|----------------|------------------------------|---------|----------------|
| 6425 | 3M™ Petrifilm™ Flat Spreader | 2/box | 70-2007-1906-3 |

End-to-end solutions

With more than 25 years of global experience in the food and beverage industry, 3M Food Safety offers a full line of products—including sample handling products such as bags, sponge-sticks, sponges and pipettors—that work together with the 3M Petrifilm *Salmonella* Express System for consistent, reliable results.

To learn more about the 3M Petrifilm *Salmonella* Express System, go to www.3M.com/3MPathogenSolutions/SALX or call 1-800-328-6553.



nelsonjameson.com

800-826-8302

