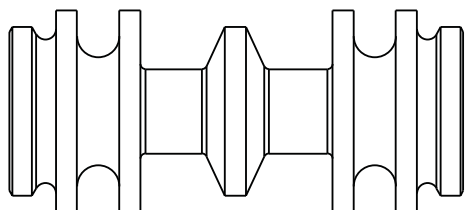
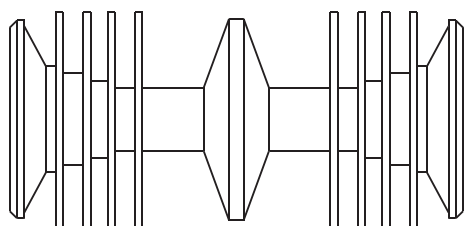


# PRS PROJECTILES



## "A" Style Pig

The "A" style pig is a four-wiper design with generous clearance between the wipers for easy cleaning when used with viscous products. A flexible core allows for superior surface contact with the inside of the tubing. Thicker wipers provide added strength.



## "B" Style Pig

The "B" style pig is a robust eight-wiper design that provides maximum surface contact for the utmost efficiency in recovering residual product. The additional wipers can also provide longer pig life in most applications.

## Application

CSI's standard food grade polyurethane projectiles, or "pigs", are intended to be used with CSI's Product Recovery System (PRS) as a simple, economical and efficient way to increase your product yields and reduce CIP costs by recovering the residual product left behind in the lines after your food, beverage or pharmaceutical processing.

Constructed exclusively of materials that comply with the appropriate FDA and 3A standards, these sanitary, reusable pigs will move safely and reliably through sanitary tubing, sanitary hose, full-port ball valves and standard tube fittings including 90° elbows.

## Design

Choose from two different styles of pigs, depending on your application: the four-wiper "A" style and the eight-wiper "B" style. Both are one-piece solid molded projectiles made from food grade polyurethane and both are white in color. Both styles are also available in standard and detectable models. The detectable pigs are specially designed for use with CSI's Pig Detection System. Detectable pigs are dimensionally identical to standard pigs.

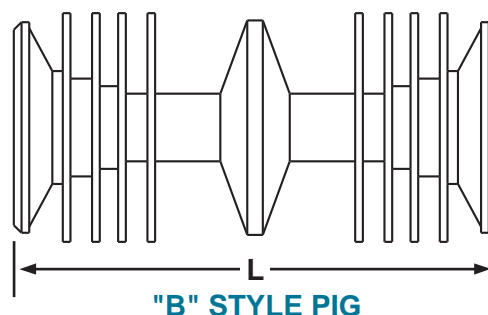
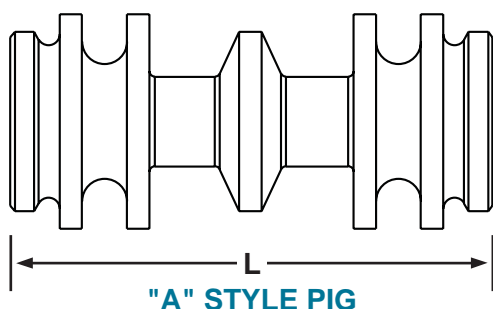
The CSI food grade projectiles are manufactured in strict compliance with:

- 1) Code of Federal Regulations Title 21; Chapter 1; Subchapter B; Part 177; Subpart B; Section 177.2600. (Rubber Articles Intended for Repeated Use in Food Contact)
- 2) 3-A Sanitary Standards Number 18-00 (Multiple use Rubber and Rubber-like Materials Used as Product Contact Surfaces in Dairy Equipment)

## Temperature Rating for Food Grade Polyurethane

MINIMUM	MAXIMUM
-40° F	200° F
-40° C	93° C

NOM. SIZE	"A" STYLE 4-WIPER		"B" STYLE 8-WIPER	
	STANDARD	DETECTABLE	STANDARD	DETECTABLE
1.5"	PRS-P15A-R	PRS-P15A-R-B	PRS-P15B-R	PRS-P15B-R-B
2"	PRS-P20A-R	PRS-P20A-R-B	PRS-P20B-R	PRS-P20B-R-B
2.5"	PRS-P25A-R	PRS-P25A-R-B	PRS-P25B-R	PRS-P25B-R-B
3"	PRS-P30A-R	PRS-P30A-R-B	PRS-P30B-R	PRS-P30B-R-B
4"	PRS-P40A-R	PRS-P40A-R-B	PRS-P40B-R	PRS-P40B-R-B



NOM. SIZE	PART NUMBER	"L"
1 ½	PRS-P15X-X-X	4.00
2	PRS-P20X-X-X	4.50
2 ½	PRS-P25X-X-X	5.50
3	PRS-P30X-X-X	6.38
4	PRS-P40X-X-X	7.75

Dimensions are in inches.

## Cleaning and Storage

With proper handling, CSI's sanitary polyurethane pigs will provide a long, trouble-free service life. After each use, the pig can typically be cleaned with a hot water flush up to 200° F with minimal scrubbing. If a detergent or other cleaning agent is used, be sure the pig is adequately rinsed to remove any residual material from the pig. Limited exposure to an alcohol solution is acceptable provided that the pig is properly flushed afterward.

Ultraviolet sterilization is not recommended. Polyurethane has an inherent sensitivity to UV light and could be susceptible to chemical breakdown. For this reason it is recommended that the pigs be stored in a cool, dark area out of direct sunlight.

Polyurethane is used as the primary compound for CSI's standard product recovery projectiles because of its compatibility with most products, its broad thermal range and its outstanding abrasion resistance. CSI's sanitary polyurethane pigs are recommended for use only with products that are compatible with polyurethane. If you have any questions or need additional information about the compatibility of your product with these pigs, contact your CSI representative for details.