

Pos.	Qty.	Description	1 Hp Part No.	1.5-2 Hp Part No.	3-5 Hp Part No.
1	1	Motor			
4	2	Screw	9612-5875-03	9612-5875-04	9612-5875-05
7	1	Stub shaft	9612-5953-01	9612-5961-01	9612-5954-01
8	1	Connex pin	9611-99-0622	9611-99-0622	9611-99-0622
10	1	Drive ring - single shaft seal	9612-1377-01	9612-1377-01	9612-1377-01
	1	Drive ring - flushed shaft seal	9612-1397-01	9612-1397-01	9612-1397-01
11→>◆□○◇	1	Stationary seal ring, SC	9612-1379-01	9612-1379-01	9612-1379-01
12→>◆□○◇	1	Stationary O-ring, EPDM (standard)	9611-99-2149	9611-99-2149	9611-99-2149
	1	Stationary O-ring, FPM	9611-99-2150	9611-99-2150	9611-99-2150
	1	Stationary O-ring, NBR	9611-99-2151	9611-99-2151	9611-99-2151
	1	Stationary O-ring, PTFE	9611-99-2152	9611-99-2152	9611-99-2152
13→>◆□○◇	1	Spring	9612-1376-01	9612-1376-01	9612-1376-01
14→>□○	1	Rotating seal ring, Carbon	9612-13-6401	9612-13-6401	9612-13-6401
	1	Rotating seal ring, SC	9612-13-6402	9612-13-6402	9612-13-6402
◆◇	2	Rotating seal ring, Carbon	9612-13-6401	9612-13-6401	9612-13-6401
	2	Rotating seal ring, SC	9612-13-6402	9612-13-6402	9612-13-6402
15→>□○	1	Rotating O-ring, EPDM (standard)	9611-99-2145	9611-99-2145	9611-99-2145
	1	Rotating O-ring, FPM	9611-99-2146	9611-99-2146	9611-99-2146
	1	Rotating O-ring, NBR	9611-99-2147	9611-99-2147	9611-99-2147
	1	Rotating O-ring, PTFE	9611-99-2148	9611-99-2148	9611-99-2148
◆◇	2	Rotating O-ring, EPDM (standard)	9611-99-2145	9611-99-2145	9611-99-2145
	2	Rotating O-ring, FPM	9611-99-2146	9611-99-2146	9611-99-2146
	2	Rotating O-ring, NBR	9611-99-2147	9611-99-2147	9611-99-2147
	2	Rotating O-ring, PTFE	9611-99-2148	9611-99-2148	9611-99-2148
16	1	Adaptor	9612-5955-01	9612-1359-42	9612-1359-43
17	4	Screw for adaptor	9611-99-1911	9611-99-1911	9611-99-1911
18	4	Nut for adaptor	9611-99-0353	9611-99-0353	9611-99-0353
19	4	Washer for adaptor	9611-99-1888	9611-99-1888	9611-99-1888
20	2	Nut	9611-99-0260	9611-99-0260	9611-99-0380
21	2	Washer	9611-99-1831	9611-99-1831	9611-99-1831
22	1	Safety gaurd	9612-5939-02	9612-5939-02	9612-5939-06
23	1	Screw for safety gaurd	9611-99-2544	9611-99-2544	9611-99-2544
25	1	Back plate	9612-1384-28	9612-1384-28	9612-1384-28
26□○◇	1	Joint ring, EPDM (standard)	9611-99-3560	9611-99-3560	9611-99-3560
	1	Joint ring, NBR	9611-99-3561	9611-99-3561	9611-99-3561
	1	Joint ring, FPM	9611-99-3562	9611-99-3562	9611-99-3562
	1	Joint ring, PTFE/SFY	9611-99-3563	9611-99-3563	9611-99-3563
29	1	Pump casing, GC	9612-1288-14	9612-1288-14	9612-1288-14
30a-35	1	Leg assembly	481654	481656	481661
36	1	Impeller screw	9612-3627-01	9612-3627-01	9612-3627-01
37	1	Impeller for impeller screw	9612587606	9612587606	9612587606
38□○◇	1	O-ring, EPDM (standard)	9611-99-2750	9611-99-2750	9611-99-2750
	1	O-ring, NBR	9611-99-2751	9611-99-2751	9611-99-2751
	1	O-ring, FPM	9611-99-2752	9611-99-2752	9611-99-2752
	1	O-ring, PTFE	9611-99-3539	9611-99-3539	9611-99-3539
40a	1	Seal housing - double mechanical	9612-1339-02	9612-1339-02	9612-1339-02
40b	1	Seal housing - flushed	9612-1339-01	9612-1339-01	9612-1339-01
41	2	Screw for seal housing	9611-99-0203	9611-99-0203	9611-99-0203
42	2	Water flush pipe	9612-35-8901	9612-35-8901	9612-35-8901
43>○	1	Lip seal	31446-0088-2	31446-0088-2	31446-0088-2
44>◆○◇	1	O-ring for seal housing	9611-99-2153	9611-99-2153	9611-99-2153
45>○	1	Drive ring O-ring	9611-99-2145	9611-99-2145	9611-99-2145
50◆◇	1	O-ring	9611-99-2156	9611-99-2156	9611-99-2156
51◆◇	1	Sec. stationary seal ring, SC	9612-1383-02	9612-1383-02	9612-1383-02
52◆◇	1	Spacer	9612-3089-01	9612-3089-01	9612-3089-01
55	1	Upper clamp	9612-5895-02	9612-5895-02	9612-5895-02
55a	1	Lower clamp	9612-5896-02	9612-5896-02	9612-5896-02
56	2	Screw	9611-99-1126	9611-99-1126	9611-99-1126
56a	2	Spring washer	9611-99-1888	9611-99-1888	9611-99-1888

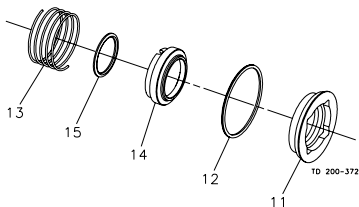
Parts marked with→, >, ◆ are included in the seal kits.

Parts marked with→, >, ◆, □, ○, ◇ are included in the service kits.

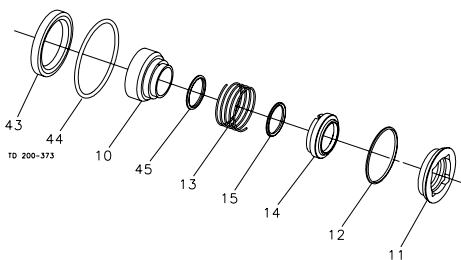
## Recommended Spare Parts: Service kits

Pos.	Qty.	Description	1-40 Hp Part No.
<b>Seal Kit for Single Shaft Seal</b>			
→	1	C/SC seal kit, EPDM .....	9612-1296-09
→	1	C/SC seal kit, NBR .....	9612-1296-10
→	1	C/SC seal kit, FPM .....	9612-1296-11
→	1	SC/SC seal kit, EPDM .....	9612-1296-05
→	1	SC/SC seal kit, NBR .....	9612-1296-06
→	1	SC/SC seal kit, FPM .....	9612-1296-07
<b>Seal Kit for Flushed Shaft Seal</b>			
➤	1	C/SC seal kit, EPDM .....	9612-1296-25
➤	1	C/SC seal kit, NBR .....	9612-1296-26
➤	1	C/SC seal kit, FPM .....	9612-1296-27
➤	1	SC/SC seal kit, EPDM .....	9612-1296-29
➤	1	SC/SC seal kit, NBR .....	9612-1296-30
➤	1	SC/SC seal kit, FPM .....	9612-1296-31
<b>Seal Kit for Double Mechanical Shaft Seal</b>			
□	1	C/SC seal kit, EPDM .....	9612-12-9613
□	1	C/SC seal kit, NBR .....	9612-12-9614
□	1	C/SC seal kit, FPM .....	9612-12-9615
□	1	SC/SC seal kit, EPDM .....	9612-12-9617
□	1	SC/SC seal kit, NBR .....	9612-12-9618
□	1	SC/SC seal kit, FPM .....	9612-12-9619
Parts marked with →, ➤, □ are included in the seal kits.			
<b>Service Kit for Single Shaft Seal</b>			
□	1	Service kit, EPDM .....	C/SIC 9611-92-2306
□	1	Service kit, NBR .....	SIC/SIC 9611-9225-26
□	1	Service kit, FPM .....	9611-92-2307
□	1	Service kit, PTFE .....	9611-9225-27
□	1	Service kit, PTFE .....	9611-92-2308
□	1	Service kit, PTFE .....	9611-9225-28
□	1	Service kit, PTFE .....	9611-92-2309
□	1	Service kit, PTFE .....	9611-9225-29
<b>Service Kit for Flushed Shaft Seal</b>			
○	1	Service kit, EPDM .....	C/SIC 9611-92-2314
○	1	Service kit, NBR .....	SIC/SIC 9611-9225-34
○	1	Service kit, FPM .....	9611-92-2315
○	1	Service kit, PTFE .....	9611-9225-35
○	1	Service kit, PTFE .....	9611-92-2316
○	1	Service kit, PTFE .....	9611-9225-36
○	1	Service kit, PTFE .....	9611-92-2317
○	1	Service kit, PTFE .....	9611-9225-37
<b>Service Kit for Double Mechanical Shaft Seal</b>			
◇	1	Service kit, EPDM .....	C/SIC 9611-92-2322
◇	1	Service kit, NBR .....	SIC/SIC 9611-9225-42
◇	1	Service kit, FPM .....	9611-92-2323
◇	1	Service kit, PTFE .....	9611-9225-43
◇	1	Service kit, PTFE .....	9611-92-2324
◇	1	Service kit, PTFE .....	9611-9225-44
◇	1	Service kit, PTFE .....	9611-92-2325
◇	1	Service kit, PTFE .....	9611-9225-45
Parts marked with →, ➤, □, ○, ◇ are included in the service kits.			
<b>Conversion Kits</b>			
1		Single to flushed shaft seal .....	9611-92-2042
		(The conversion kit contains Pos. 10, 40, 41, 42, 43, 44, 45)	
1		Single to double mechanical shaft seal .....	9611-92-2175
		(The conversion kit contains Pos. 14, 15, 40a, 41, 42, 44, 50, 51, 52)	
1		Flushed to double mechanical shaft seal .....	9611-92-2176
		(The conversion kit contains Pos. 14, 40a, 50, 51, 52)	
<b>Accessories</b>			
1		Tool complete .....	9612-9036-01

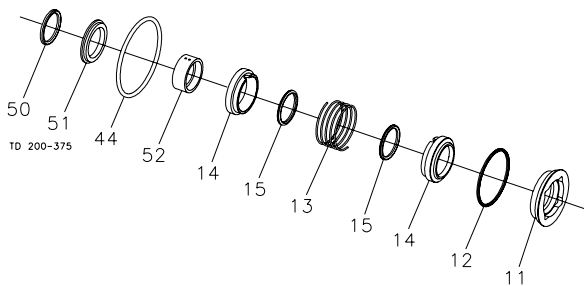
Single Shaft Seal

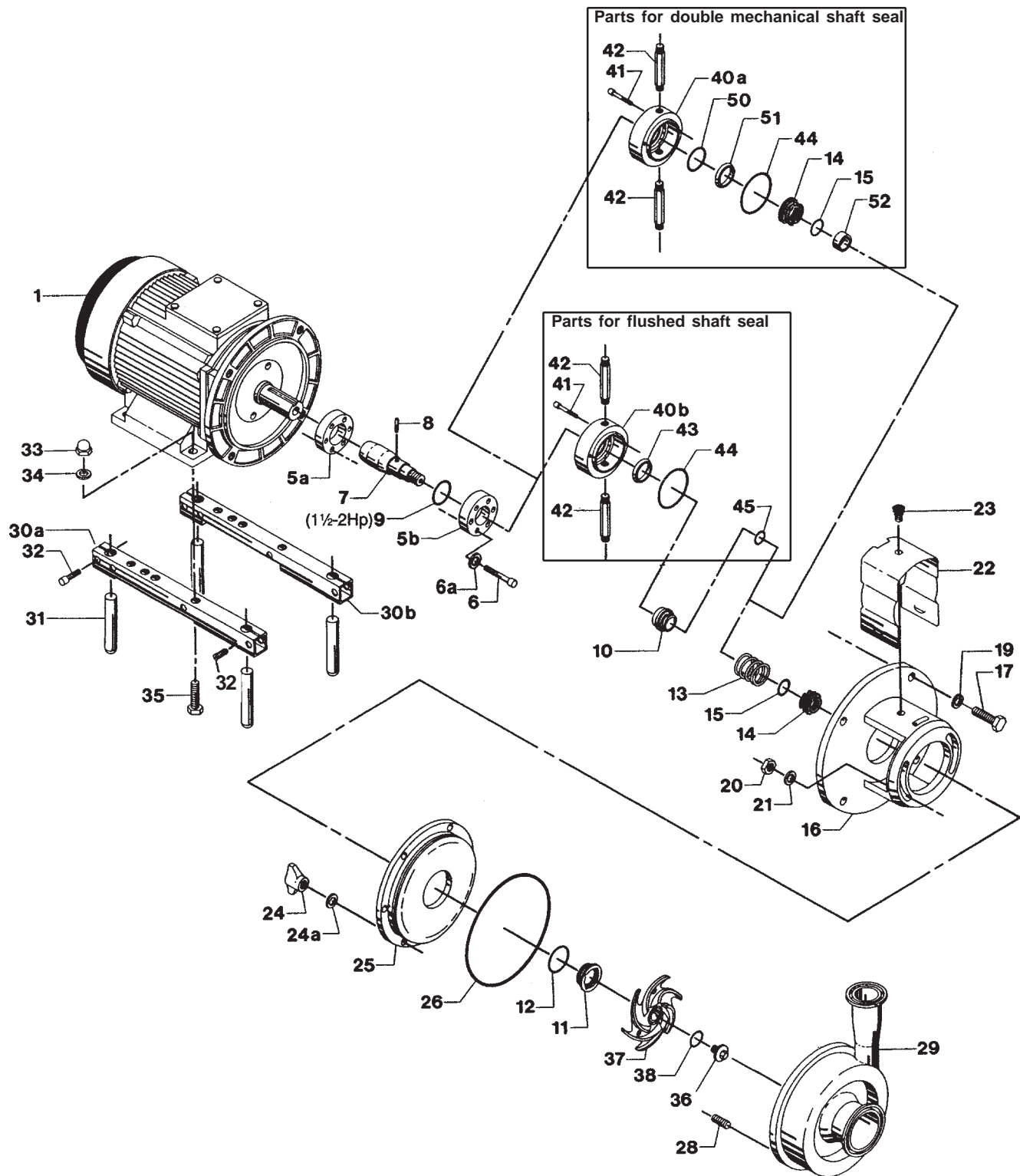


Flushed Shaft Seal



Double Mechanical Shaft Seal





# Centrifugal Pump LKH-10

Pos.	Qty.	Description	1.5-2 Hp Part No.	3-5 Hp Part No.	7.5-10 Hp Part No.
1	1	Motor			
5a	1	Compression ring with thread .....	9612-13-3601	9612-13-3602	9612-13-3606
5b	1	Compression ring without thread .....	9612-13-3701	9612-13-3702	9612-13-3706
6	6	Screw .....	9611-99-3196	9611-99-3196	9611-99-3197
6a	6	Washer .....	9611-99-3199	9611-99-3199	9611-99-3199
7	1	Stub shaft .....	9612-13-3002	9612-13-3102	9612-13-3202
8	1	Connex pin .....	9611-99-0622	9611-99-0622	9611-99-0622
9	1	Retaining ring .....	9611-99-2307	N/A	N/A
10	1	Drive ring - single shaft seal .....	9612-13-7701	9612-13-7701	9612-13-7701
	1	Drive ring - flush shaft seal .....	9612-13-9701	9612-13-9701	9612-13-9701
11→>◆□○◇	1	Stationary seal ring, SC .....	9612-13-7901	9612-13-7901	9612-13-7901
12→>◆□○◇	1	Stationary O-ring, EPDM (standard) .....	9611-99-2149	9611-99-2149	9611-99-2149
	1	Stationary O-ring, FPM .....	9611-99-2150	9611-99-2150	9611-99-2150
	1	Stationary O-ring, NBR .....	9611-99-2151	9611-99-2151	9611-99-2151
	1	Stationary O-ring, PTFE .....	9611-99-2152	9611-99-2152	9611-99-2152
13→>◆□○◇	1	Spring .....	9612-13-7601	9612-13-7601	9612-13-7601
14→>□○	1	Rotating seal ring, Carbon .....	9612-13-6401	9612-13-6401	9612-13-6401
	1	Rotating seal ring, SC .....	9612-13-6402	9612-13-6402	9612-13-6402
◆◇	2	Rotating seal ring, Carbon .....	9612-13-6401	9612-13-6401	9612-13-6401
	2	Rotating seal ring, SC .....	9612-13-6402	9612-13-6402	9612-13-6402
15→>□○	1	Rotating O-ring, EPDM (standard).....	9611-99-2145	9611-99-2145	9611-99-2145
	1	Rotating O-ring, FPM .....	9611-99-2146	9611-99-2146	9611-99-2146
	1	Rotating O-ring, NBR .....	9611-99-2147	9611-99-2147	9611-99-2147
	1	Rotating O-ring, PTFE.....	9611-99-2148	9611-99-2148	9611-99-2148
◆◇	2	Rotating O-ring, EPDM (standard).....	9611-99-2145	9611-99-2145	9611-99-2145
	2	Rotating O-ring, FPM .....	9611-99-2146	9611-99-2146	9611-99-2146
	2	Rotating O-ring, NBR .....	9611-99-2147	9611-99-2147	9611-99-2147
	2	Rotating O-ring, PTFE.....	9611-99-2148	9611-99-2148	9611-99-2148
16	1	Adaptor .....	9612-13-5910	9612-13-5911	9612-13-5912
17	4	Adaptor s crew .....	180148	180148	180148
19	4	Adaptor spring washer .....	189971	189971	189971
20	2	Adaptor nut .....	9611-99-0353	9611-99-0353	9611-99-0353
21	2	Washer .....	9611-99-2559	9611-99-2559	9611-99-2559
22	1	Safety guard.....	9612-12-9703	9612-13-1106	9612-13-1110
23	1	Safety guard screw .....	9611-99-2544	9611-99-2544	9611-99-2544
24	6	Wingnuts .....	9611-41-6891	9611-41-6891	9611-41-6891
24a	6	Spring washer.....	9611-99-1888	9611-99-1888	9611-99-1888
25	1	Back plate polished .....	9612-13-8416	9612-13-8416	9612-13-8416
26□○◇	1	Joint ring, EPDM (standard).....	9611-99-2137	9611-99-2137	9611-99-2137
	1	Joint ring, FPM .....	9611-99-2138	9611-99-2138	9611-99-2138
	1	Joint ring, NBR .....	9611-99-2139	9611-99-2139	9611-99-2139
	1	Joint ring, PTFE/SFY.....	9611-99-2140	9611-99-2140	9611-99-2140
28	6	Stud bolt .....	9611-99-2168	9611-99-2168	9611-99-2168
29	1	Pump casing, GC .....	9612-12-8801	9612-12-8801	9612-12-8801
30a-35	1	Leg assembly .....	481656	481661	481663
36	1	Impeller screw .....	9612-13-9603	9612-13-9603	9612-13-9603
37	1	Impeller polished, full .....	9612131228	9612131228	9612131228
38□○◇	1	Impeller O-ring, EPDM (standard).....	9611-99-2145	9611-99-2145	9611-99-2145
	1	Impeller O-ring, FPM .....	9611-99-2146	9611-99-2146	9611-99-2146
	1	Impeller O-ring, NBR .....	9611-99-2147	9611-99-2147	9611-99-2147
	1	Impeller O-ring, PTFE .....	9611-99-2148	9611-99-2148	9611-99-2148
40a	1	Seal housing - double mechanical .....	9612-13-3902	9612-13-3902	9612-13-3902
40b	1	Seal housing - flushed .....	9612-13-3901	9612-13-3901	9612-13-3901
41	2	Screw for seal housing .....	9611-99-0203	9611-99-0203	9611-99-0203
42	2	Water flush pipe .....	9612-35-8901	9612-35-8901	9612-35-8901
43>○	1	Lip seal .....	31446-0088-2	31446-0088-2	31446-0088-2
44>◆○◇	1	Seal housing O-ring .....	9611-99-2153	9611-99-2153	9611-99-2153
45>○	1	Drive ring o-ring .....	9611-99-2145	9611-99-2145	9611-99-2145
50◆◇	1	O-ring .....	9611-99-2156	9611-99-2156	9611-99-2156
51◆◇	1	Sec. stationary seal ring, SC .....	9612-13-8302	9612-13-8302	9612-13-8302
52◆◇	1	Spacer .....	9612-3089-01	9612-30-8901	9612-30-8901

Parts marked with →, >, ◆ are included in the seal kits.

Parts marked with →, >, ◆, □, ○, ◇ are included in the service kits.

Recommended Spare Parts: Service kits

**Alfa Laval**

Pos.	Qty.	Description	1-40 Hp Part No.
<b>Seal Kit for Single Shaft Seal</b>			
→	1	C/SC seal kit, EPDM .....	9612-1296-09
→	1	C/SC seal kit, NBR .....	9612-1296-10
→	1	C/SC seal kit, FPM .....	9612-1296-11
→	1	SC/SC seal kit, EPDM .....	9612-1296-05
→	1	SC/SC seal kit, NBR .....	9612-1296-06
→	1	SC/SC seal kit, FPM .....	9612-1296-07

<b>Seal Kit for Flushed Shaft Seal</b>			
➤	1	C/SC seal kit, EPDM .....	9612-1296-25
➤	1	C/SC seal kit, NBR .....	9612-1296-26
➤	1	C/SC seal kit, FPM .....	9612-1296-27
➤	1	SC/SC seal kit, EPDM .....	9612-1296-29
➤	1	SC/SC seal kit, NBR .....	9612-1296-30
➤	1	SC/SC seal kit, FPM .....	9612-1296-31

<b>Seal Kit for Double Mechanical Shaft Seal</b>			
◆	1	C/SC seal kit, EPDM .....	9612-12-9613
◆	1	C/SC seal kit, NBR .....	9612-12-9614
◆	1	C/SC seal kit, FPM .....	9612-12-9615
◆	1	SC/SC seal kit, EPDM .....	9612-12-9617
◆	1	SC/SC seal kit, NBR .....	9612-12-9618
◆	1	SC/SC seal kit, FPM .....	9612-12-9619

Parts marked with →, ➤, ◆ are included in the seal kits.

Service Kit for Single Shaft Seal			C/SIC	SIC/SIC
<input type="checkbox"/>	1	Service kit, EPDM .....	9611-92-2114	9611-92-2550
<input type="checkbox"/>	1	Service kit, NBR .....	9611-92-2115	9611-92-2551
<input type="checkbox"/>	1	Service kit, FPM .....	9611-92-2116	9611-92-2552
<input type="checkbox"/>	1	Service kit, PTFE .....	9611-92-2117	9611-92-2553

Service Kit for Flushed Shaft Seal			C/SIC	SIC/SIC
○	1	Service kit, EPDM .....	9611-92-2118	9611-92-2558
○	1	Service kit, NBR .....	9611-92-2119	9611-92-2559
○	1	Service kit, FPM .....	9611-92-2120	9611-92-2560
○	1	Service kit, PTFE .....	9611-92-2121	9611-92-2561

Service Kit for Double Mechanical Shaft Seal			C/SIC	SIC/SIC
✧	1	Service kit, EPDM .....	9611-92-2210	9611-92-2566
✧	1	Service kit, NBR .....	9611-92-2211	9611-92-2567
✧	1	Service kit, FPM .....	9611-92-2212	9611-92-2568
✧	1	Sevice kit. PTFE .....	9611-92-2213	9611-92-2569

Parts marked with →, ➤, ◆, □, ○, ✧ are included in the service kits.

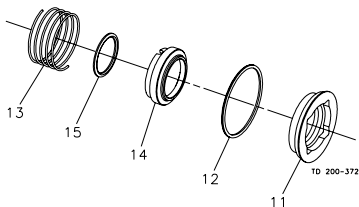
<b>Conversion Kits</b>		
1	Single to flushed shaft seal .....	9611-92-2042
	(The conversion kit contains Pos. 10, 40, 41, 42, 43, 44, 45)	
1	Single to double mechanical shaft seal .....	9611-92-2175
	(The conversion kit contains Pos. 14, 15, 40a, 41, 42, 44, 50, 51, 52)	
1	Flushed to double mechanical shaft seal .....	9611-92-2176
	(The conversion kit contains Pos. 14, 40a, 50, 51, 52)	

<b>Accessories</b>		
1	Tool complete .....	9612-9036-01

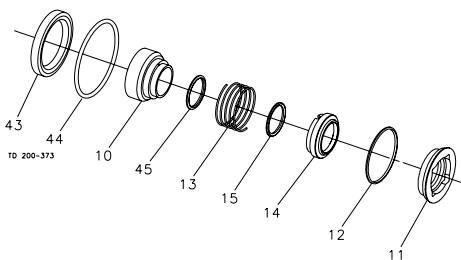
#### Recommended Spare Parts: Service kits

Alfa Laval  
8201 104th Street  
Pleasant Prairie, WI 53158-0909  
Telephone: 800-558-2060  
Fax: 262-947-4724

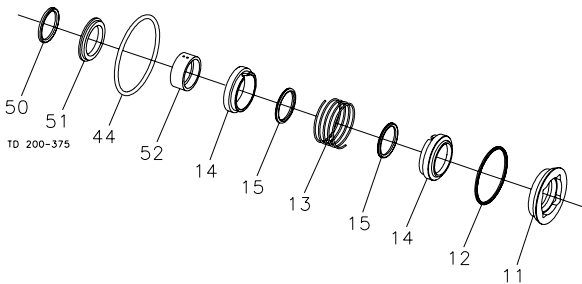
Single Shaft Seal



Flushed Shaft Seal



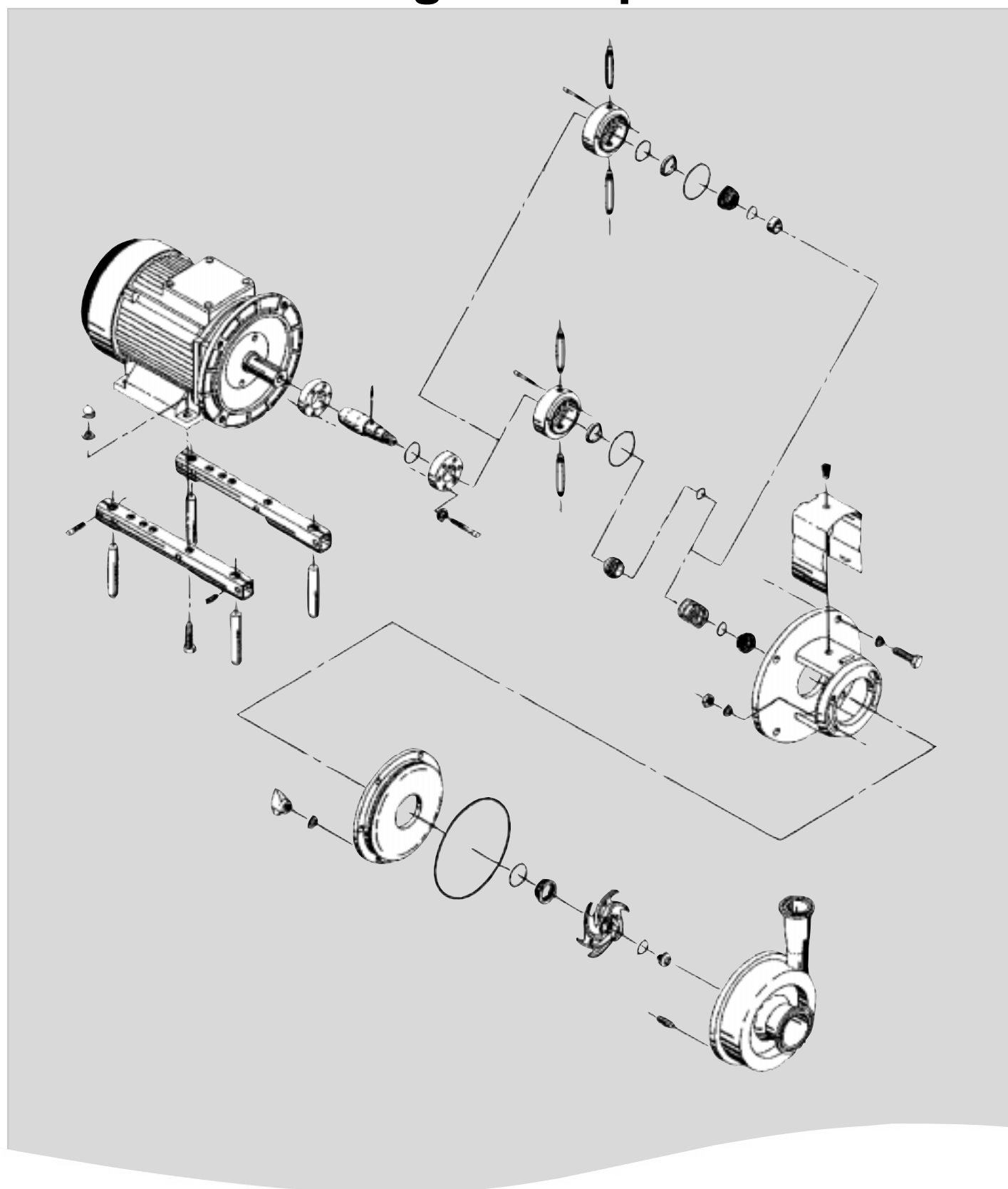
Double Mechanical Shaft Seal

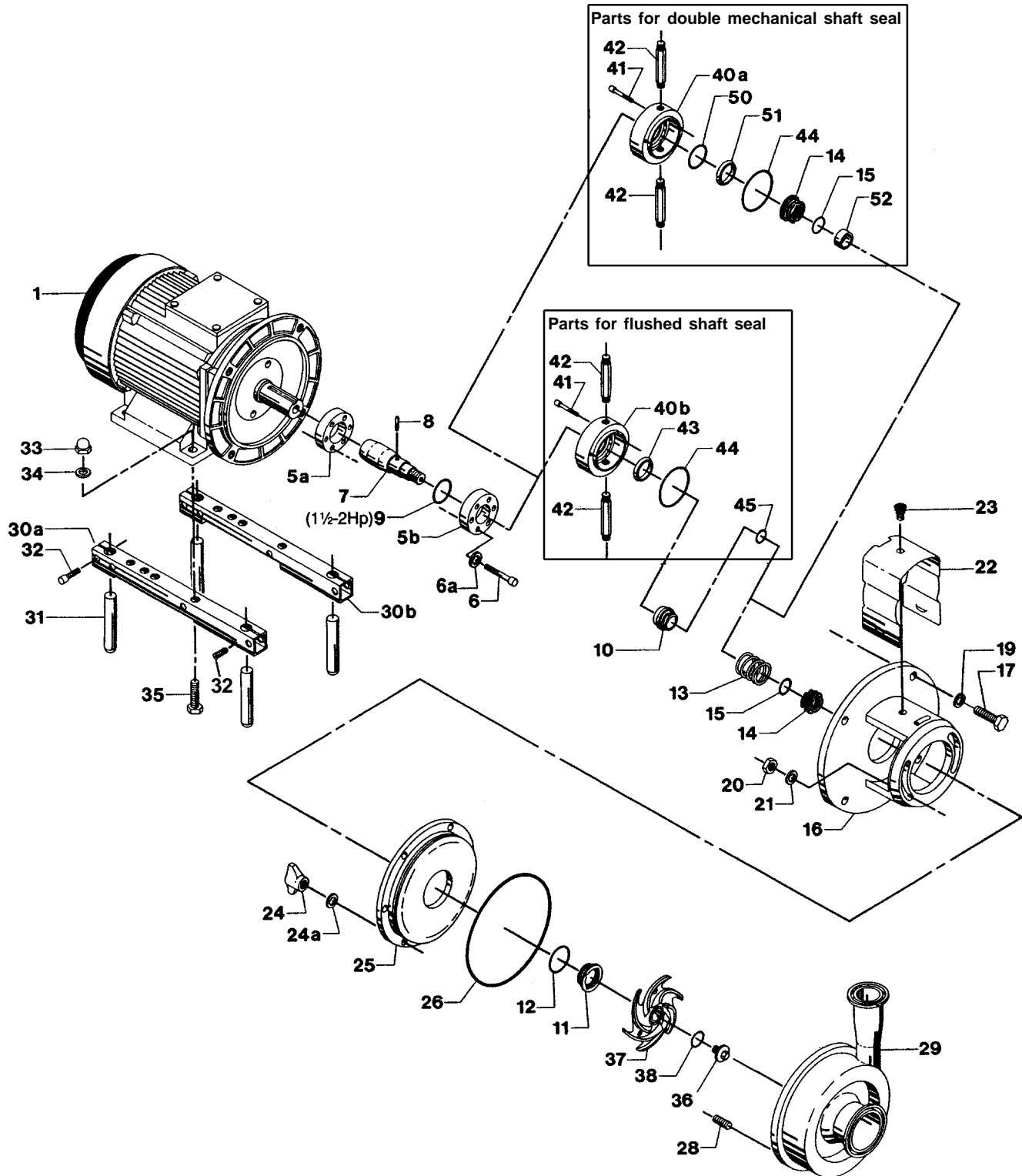




## Spare Parts List

# LKH-15 Centrifugal Pump





# Centrifugal Pump LKH-15

Pos.	Qty.	Description	1.5-2 Hp Part No.	3-5 Hp Part No.	7.5-10 Hp Part No.
1	1	Motor			
5a	1	Compression ring with thread .....	9612-13-3601	9612-13-3602	9612-13-3606
5b	1	Compression ring without thread .....	9612-13-3701	9612-13-3702	9612-13-3706
6	6	Screw .....	9611-99-3196	9611-99-3196	9611-99-3197
6a	6	Washer .....	9611-99-3199	9611-99-3199	9611-99-3199
7	1	Stub shaft .....	9612-13-3002	9612-13-3102	9612-13-3202
8	1	Connex pin .....	9611-99-0622	961199-0622	9611-99-0622
9	1	Retaining ring .....	9611-99-2307	N/A	N/A
10	1	Drive ring - single shaft seal .....	9612-13-7701	9612-13-7701	9612-13-7701
	1	Drive ring - flush shaft seal .....	9612-13-9701	9612-13-9701	9612-13-9701
11■◆□◇	1	Stationary seal ring, SC .....	9612-13-7901	9612-13-7901	9612-13-7901
12■◆□◇	1	Stationary O-ring, EPDM (standard) .....	9611-99-2149	9611-99-2149	9611-99-2149
	1	Stationary O-ring, FPM .....	9611-99-2150	9611-99-2150	9611-99-2150
	1	Stationary O-ring, NBR .....	9611-99-2151	9611-99-2151	9611-99-2151
	1	Stationary O-ring, PTFE .....	9611-99-2152	9611-99-2152	9611-99-2152
13■◆□◇	1	Spring .....	9612-13-7601	9612-13-7601	9612-13-7601
14■□◇	1	Rotating seal ring, Carbon .....	9612-13-6401	9612-13-6401	9612-13-6401
	1	Rotating seal ring, SC .....	9612-13-6402	9612-13-6402	9612-13-6402
◆◇	2	Rotating seal ring, Carbon .....	9612-13-6401	9612-13-6401	9612-13-6401
	2	Rotating seal ring, SC .....	9612-13-6402	9612-13-6402	9612-13-6402
15■□◇	1	Rotating O-ring, EPDM (standard) .....	9611-99-2145	9611-99-2145	9611-99-2145
	1	Rotating O-ring, FPM .....	9611-99-2146	9611-99-2146	9611-99-2146
	1	Rotating O-ring, NBR .....	9611-99-2147	9611-99-2147	9611-99-2147
	1	Rotating O-ring, PTFE .....	9611-99-2148	9611-99-2148	9611-99-2148
◆◇	2	Rotating O-ring, EPDM (standard) .....	9611-99-2145	9611-99-2145	9611-99-2145
	2	Rotating O-ring, FPM .....	9611-99-2146	9611-99-2146	9611-99-2146
	2	Rotating O-ring, NBR .....	9611-99-2147	9611-99-2147	9611-99-2147
	2	Rotating O-ring, PTFE .....	9611-99-2148	9611-99-2148	9611-99-2148
16	1	Adaptor .....	9612-13-5910	9612-13-5911	9612-13-5912
17	4	Adaptor screw .....	881-30173	881-30173	881-30173
19	4	Adaptor spring washer .....	881-29835	881-29835	881-29835
20	2	Adaptor nut .....	9611-99-0353	9611-99-0353	9611-99-0353
21	2	Washer .....	9611-99-2559	9611-99-2559	9611-99-2559
22	1	Safety guard .....	9612-12-9703	9612-13-1106	9612-13-1110
23	1	Safety guard screw .....	31460-1309-1	31460-1309-1	31460-1309-1
24	6	Wingnuts .....	9611-41-6891	9611-41-6891	9611-41-6891
24a	6	Spring washer .....	9611-99-1888	9611-99-1888	9611-99-1888
25	1	Back plate polished .....	9612-13-8416	9612-13-8416	9612-13-8416
26□◇	1	Joint ring, EPDM (standard) .....	9611-99-2137	9611-99-2137	9611-99-2137
	1	Joint ring, FPM .....	9611-99-2138	9611-99-2138	9611-99-2138
	1	Joint ring, NBR .....	9611-99-2139	9611-99-2139	9611-99-2139
	1	Joint ring, PTFE .....	9611-99-2140	9611-99-2140	9611-99-2140
28□◇	6	Stud bolt .....	9611-99-2168	9611-99-2168	9611-99-2168
29	1	Pump casing .....	883-39447	883-39447	883-39447
30a-35	1	Leg assembly .....	9612-13-5919	9612-135-920	31460-1301-4
36	1	Impeller screw .....	9612-13-9603	961213-9603	9612-13-9603
37	1	Impeller polished, full .....	883-39459	883-39459	883-39459
38	1	Impeller O-ring, EPDM (standard) .....	9611-99-2145	9611-99-2145	9611-99-2145
	1	Impeller O-ring, FPM .....	9611-99-2146	9611-99-2146	9611-99-2146
	1	Impeller O-ring, NBR .....	9611-99-2147	9611-99-2147	9611-99-2147
	1	Impeller O-ring, PTFE .....	9611-99-2148	9611-99-2148	9611-99-2148
40a	1	Seal housing - double mechanical .....	9612-13-3902	9612-13-3902	9612-13-3902
40b	1	Seal housing - flushed .....	9612-13-3901	9612-13-3901	9612-13-3901
41	2	Screw for seal housing .....	9611-99-0203	9611-99-0203	9611-99-0203
42	2	Water flush pipe .....	31457-0056-1	31457-0056-1	31457-0056-1
43●○	1	Lip seal .....	31446-0088-2	31446-0088-2	31446-0088-2
44●◆○◇	1	Seal housing o-ring .....	9611-99-2153	9611-99-2153	9611-99-2153
45●○	1	Drive ring o-ring .....	9611-99-2145	9611-99-2145	9611-99-2145
50◆◇	1	O-ring .....	9611-99-2156	9611-99-2156	9611-99-2156
51◆◇	1	Sec. stationary seal ring, SC .....	9612-13-8302	9612-13-8302	9612-13-8302
52◆◇	1	Spacer .....	9612-30-8901	9612-30-8901	9612-30-8901

Parts marked with ■, ●, ◆ are included in the seal kits.

Parts marked with ■, ●, ◆, □, ○, ◇ are included in the service kits.

**Recommended Spare Parts: Service kits**

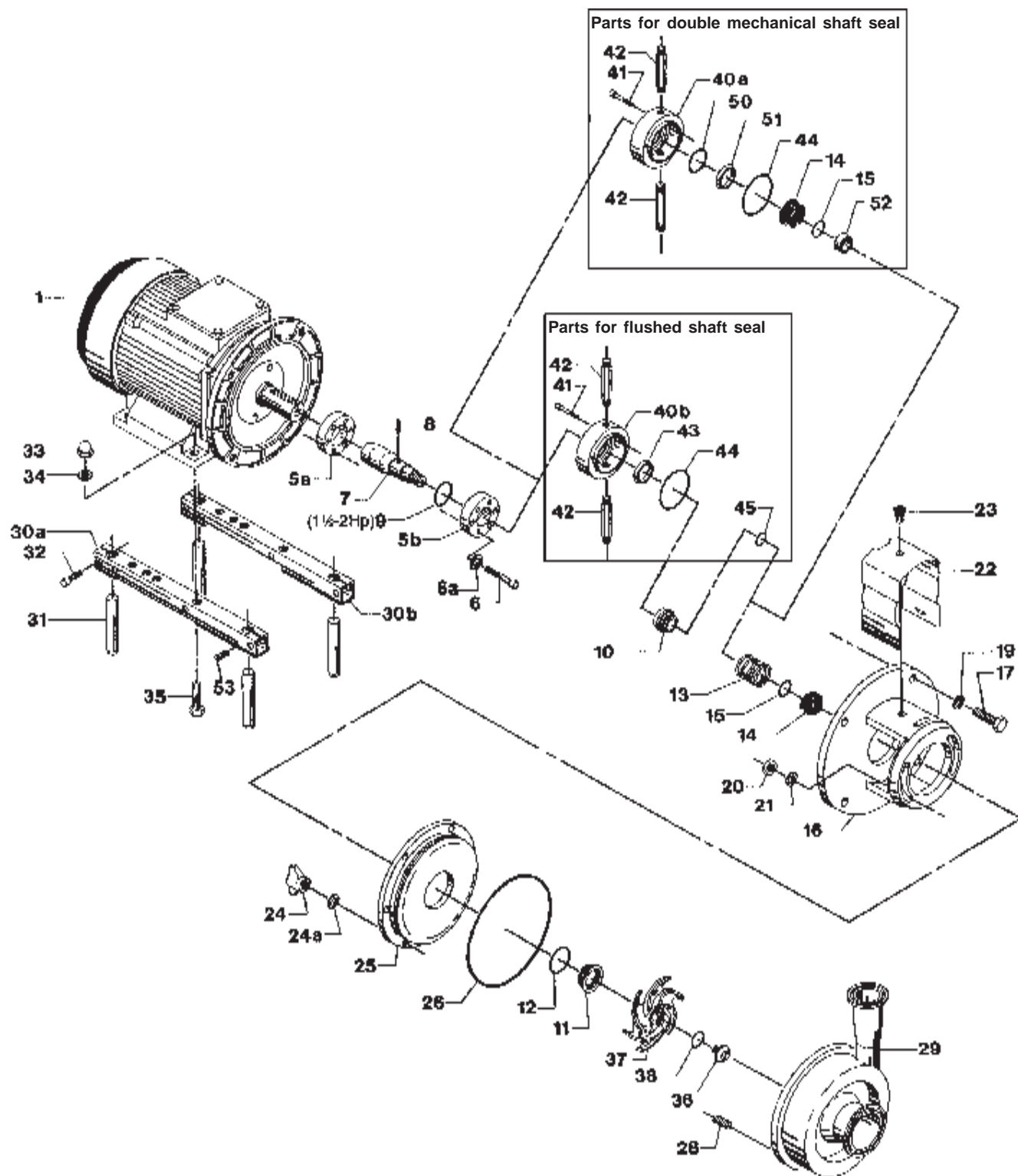
 **Alfa Laval**

Pos.	Qty.	Description	1-40 Hp Part No.
<b>Seal Kit for Single Shaft Seal</b>			
■	1	C/SC seal kit, EPDM .....	9612-1296-09
■	1	C/SC seal kit, NBR .....	9612-1296-10
■	1	C/SC seal kit, FPM .....	9612-1296-11
■	1	SC/SC seal kit, EPDM .....	9612-1296-05
■	1	Seal kit, NBR .....	9612-1296-06
■	1	Seal kit, FPM .....	9612-1296-07
<b>Seal Kit for Flushed Shaft Seal</b>			
●	1	C/SC seal kit, EPDM .....	9612-1296-09
●	1	C/SC seal kit, NBR .....	9612-1296-10
●	1	C/SC seal kit, FPM .....	9612-1296-11
●	1	SC/SC seal kit, EPDM .....	9612-1296-05
●	1	SC/SC seal kit, NBR .....	9612-1296-06
●	1	SC/SC seal kit, FPM .....	9612-1296-07
<b>Seal Kit for Double Mechanical Shaft Seal</b>			
◆	1	C/SC seal kit, EPDM .....	9612-12-9613
◆	1	C/SC seal kit, NBR .....	9612-12-9614
◆	1	C/SC seal kit, FPM .....	9612-12-9615
◆	1	SC/SC seal kit, EPDM .....	9612-12-9617
◆	1	SC/SC seal kit, NBR .....	9612-12-9618
◆	1	SC/SC seal kit, FPM .....	9612-12-9619
Parts marked with ■, ●, ◆ are included in the seal kits.			
<b>Service Kit for Single Shaft Seal</b>			
□	1	Service kit, EPDM .....	9611-92-2114
□	1	Service kit, NBR .....	9611-92-2115
□	1	Service kit, FPM .....	9611-92-2116
□	1	Service kit, PTFE .....	9611-92-2117
<b>Service Kit for Flushed Shaft Seal</b>			
○	1	Service kit, EPDM .....	9611-92-2118
○	1	Service kit, NBR .....	9611-92-2119
○	1	Service kit, FPM .....	9611-92-2120
○	1	Service kit, PTFE .....	9611-92-2121
<b>Service Kit for Double Mechanical Shaft Seal</b>			
◇	1	Service kit, EPDM .....	9611-92-2210
◇	1	Service kit, NBR .....	9611-92-2211
◇	1	Service kit, FPM .....	9611-92-2212
◇	1	Service kit, PTFE .....	9611-92-2213
Parts marked with ■, ●, ◆, □, ○, ◇ are included in the service kits.			
<b>Conversion Kits</b>			
1	Single to flushed shaft seal .....		9611-92-2042
	(The conversion kit contains Pos. 10, 40, 41, 42, 43, 44, 45)		
1	Single to double mechanical shaft seal .....		9611-92-2175
	(The conversion kit contains Pos. 14, 15, 40a, 41, 42, 44, 50, 51, 52)		
1	Flushed to double mechanical shaft seal .....		9611-92-2176
	(The conversion kit contains Pos. 14, 40a, 50, 51, 52) .....		
<b>Accessories</b>			
1	Tool complete .....		9612-1371-01

## Recommended Spare Parts: Service kits

Alfa Laval Flow Inc.  
8201 104th Street  
Pleasant Prairie, WI 53158-0909  
Telephone: 800-558-2060  
Fax: 262-947-4724  
www.us.flow.alfalaval.com





# Centrifugal Pump LKH-20

Pos.	Qty.	Description	1.5-2 Hp Part No.	3-5 Hp Part No.	7.5-10 Hp Part No.	15-20 Hp Part No.
1	1	Motor				
5a	1	Compression ring with thread .....	9612-13-3601	9612-13-3602	9612-13-3606	9612-13-3603
5b	1	Compression ring without thread .....	9612-13-3701	9612-13-3702	9612-13-3706	9612-13-3703
6	6	Screw .....	9611-99-3196	9611-99-3196	9611-99-3197	9611-99-3197
6a	6	Washer .....	9611-99-3199	9611-99-3199	9611-99-3199	9611-99-3199
7	1	Stub shaft .....	9612-13-3002	9612-13-3102	9612-13-3202	9612-13-3302
8	1	Connex pin .....	9611-99-0622	9611-99-0622	9611-99-0622	9611-99-0622
9	1	Retaining ring .....	9611-99-2307	N/A	N/A	N/A
10	1	Drive ring - single shaft seal .....	9612-13-7701	9612-13-7701	9612-13-7701	9612-13-7701
	1	Drive ring - flush shaft seal .....	9612-13-9701	9612-13-9701	9612-13-9701	9612-13-9701
11→▶◆□○◆	1	Stationary seal ring, SC .....	9612-13-7901	9612-13-7901	9612-13-7901	9612-13-7901
12→▶◆□○◆	1	Stationary O-ring, EPDM (standard) .....	9611-99-2149	9611-99-2149	9611-99-2149	9611-99-2149
	1	Stationary O-ring, FPM .....	9611-99-2150	9611-99-2150	9611-99-2150	9611-99-2150
	1	Stationary O-ring, NBR .....	9611-99-2151	9611-99-2151	9611-99-2151	9611-99-2151
	1	Stationary O-ring, PTFE .....	9611-99-2152	9611-99-2152	9611-99-2152	9611-99-2152
13→▶◆□○◆	1	Spring .....	9612-13-7601	9612-13-7601	9612-13-7601	9612-13-7601
14→▶□○	1	Rotating seal ring, Carbon .....	9612-13-6401	9612-13-6401	9612-13-6401	9612-13-6401
	1	Rotating seal ring, SC .....	9612-13-6402	9612-13-6402	9612-13-6402	9612-13-6402
◆◆	2	Rotating seal ring, Carbon .....	9612-13-6401	9612-13-6401	9612-13-6401	9612-13-6401
	2	Rotating seal ring, SC .....	9612-13-6402	9612-13-6402	9612-13-6402	9612-13-6402
15→▶□○	1	Rotating O-ring, EPDM (standard) .....	9611-99-2145	9611-99-2145	9611-99-2145	9611-99-2145
	1	Rotating O-ring, FPM .....	9611-99-2146	9611-99-2146	9611-99-2146	9611-99-2146
	1	Rotating O-ring, NBR .....	9611-99-2147	9611-99-2147	9611-99-2147	9611-99-2147
	1	Rotating O-ring, PTFE .....	9611-99-2148	9611-99-2148	9611-99-2148	9611-99-2148
◆◆	2	Rotating O-ring, EPDM (standard) .....	9611-99-2145	9611-99-2145	9611-99-2145	9611-99-2145
	2	Rotating O-ring, FPM .....	9611-99-2146	9611-99-2146	9611-99-2146	9611-99-2146
	2	Rotating O-ring, NBR .....	9611-99-2147	9611-99-2147	9611-99-2147	9611-99-2147
	2	Rotating O-ring, PTFE .....	9611-99-2148	9611-99-2148	9611-99-2148	9611-99-2148
16	1	Adaptor .....	9612-13-5910	9612-13-5911	9612-13-5912	9612-13-5913
17	4	Adaptor screw .....	180148	180148	180148	180148
19	4	Adaptor spring washer .....	189971	189971	189971	189971
20	2	Adaptor nut .....	9611-99-0353	9611-99-0353	9611-99-0353	9611-99-0353
21	2	Washer .....	9611-99-2559	9611-99-2559	9611-99-2559	9611-99-2559
22	1	Safety guard .....	9612-12-9703	9612-13-1106	9612-13-1110	9612-13-1108
23	1	Safety guard screw .....	9611-99-2544	9611-99-2544	9611-99-2544	9611-99-2544
24	6	Wingnuts .....	9611-41-6891	9611-41-6891	9611-41-6891	9611-41-6891
24a	6	Spring washer .....	9611-99-1888	9611-99-1888	9611-99-1888	9611-99-1888
25	1	Back plate polished .....	9612-13-8417	9612-13-8417	9612-13-8417	9612-13-8417
26□○◆	1	Joint ring, EPDM (standard) .....	9611-99-2141	9611-99-2141	9611-99-2141	9611-99-2141
	1	Joint ring, FPM .....	9611-99-2142	9611-99-2142	9611-99-2142	9611-99-2142
	1	Joint ring, NBR .....	9611-99-2143	9611-99-2143	9611-99-2143	9611-99-2143
	1	Joint ring, PTFE/SFY .....	9611-99-2144	9611-99-2144	9611-99-2144	9611-99-2144
28	6	Stud bolt .....	9611-99-2168	9611-99-2168	9611-99-2168	9611-99-2168
29	1	Pump casing .....	9612-12-8901	9612-12-8901	9612-12-8901	9612-12-8901
30a-35	1	Leg assembly .....	481656	481661	481663	481665
36	1	Impeller screw .....	9612-13-9603	9612-13-9603	9612-13-9603	9612-13-9603
37	1	Impeller polished, full .....	9612131418	9612131418	9612131418	9612131418
38□○◆	1	Impeller O-ring, EPDM (standard) .....	9611-99-2145	9611-99-2145	9611-99-2145	9611-99-2145
	1	Impeller O-ring, FPM .....	9611-99-2146	9611-99-2146	9611-99-2146	9611-99-2146
	1	Impeller O-ring, NBR .....	9611-99-2147	9611-99-2147	9611-99-2147	9611-99-2147
	1	Impeller O-ring, PTFE .....	9611-99-2148	9611-99-2148	9611-99-2148	9611-99-2148
40a	1	Seal housing - double mechanical .....	9612-13-3902	9612-13-3902	9612-13-3902	9612-13-3902
40b	1	Seal housing - flushed .....	9612-13-3901	9612-13-3901	9612-13-3901	9612-13-3901
41	2	Screw for seal housing .....	9611-99-0203	9611-99-0203	9611-99-0203	9611-99-0203
42	2	Water flush pipe .....	9612-35-8901	9612-35-8901	9612-35-8901	9612-35-8901
43>○	1	Lip seal .....	31446-0088-2	31446-0088-2	31446-0088-2	31446-0088-2
44>◆○◆	1	Seal housing O-ring .....	9611-99-2153	9611-99-2153	9611-99-2153	9611-99-2153
45>○	1	Drive ring O-ring .....	9611-99-2145	9611-99-2145	9611-99-2145	9611-99-2145
50◆◆	1	O-ring .....	9611-99-2156	9611-99-2156	9611-99-2156	9611-99-2156
51◆◆	1	Sec. stationary seal ring, SC .....	9612-13-8302	9612-13-8302	9612-13-8302	9612-13-8302
52◆◆	1	Spacer .....	9612-30-8901	9612-30-8901	9612-30-8901	9612-30-8901

Parts marked with →, ▶, ◆ are included in the seal kits.

Parts marked with →, ▶, ◆, □, ○, ◇ are included in the service kits.

Recommended Spare Parts: Service kits

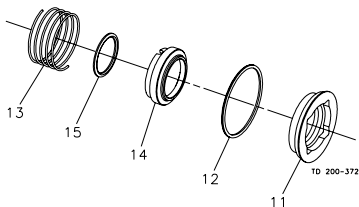
**Alfa Laval**

Pos.	Qty.	Description	1-40 Hp Part No.
<b>Seal Kit for Single Shaft Seal</b>			
→	1	C/SC seal kit, EPDM .....	9612-1296-09
→	1	C/SC seal kit, NBR .....	9612-1296-10
→	1	C/SC seal kit, FPM .....	9612-1296-11
→	1	SC/SC seal kit, EPDM .....	9612-1296-05
→	1	SC/SC seal kit, NBR .....	9612-1296-06
→	1	SC/SC seal kit, FPM .....	9612-1296-07
<b>Seal Kit for Flushed Shaft Seal</b>			
➤	1	C/SC seal kit, EPDM .....	9612-1296-25
➤	1	C/SC seal kit, NBR .....	9612-1296-26
➤	1	C/SC seal kit, FPM .....	9612-1296-27
➤	1	SC/SC seal kit, EPDM .....	9612-1296-29
➤	1	SC/SC seal kit, NBR .....	9612-1296-30
➤	1	SSC/SC seal kit, FPM .....	9612-1296-31
<b>Seal Kit for Double Mechanical Shaft Seal</b>			
◆	1	C/SC seal kit, EPDM .....	9612-1296-13
◆	1	C/SC seal kit, NBR .....	9612-1296-14
◆	1	C/SC seal kit, FPM .....	9612-1296-15
◆	1	SC/SC seal kit, EPDM .....	9612-1296-17
◆	1	SC/SC seal kit, NBR .....	9612-1296-18
◆	1	SC/SC seal kit, FPM .....	9612-1296-19
Parts marked with →, ➤, ◆ are included in the seal kits.			
<b>Service Kit for Single Shaft Seal</b>			
□	1	Service kit, EPDM .....	C/SIC 9611-92-2122 SIC/SIC 9611-92-2574
□	1	Service kit, NBR .....	9611-92-2123 9611-92-2575
□	1	Service kit, FPM .....	9611-92-2124 9611-92-2576
□	1	Service kit, PTFE .....	9611-92-2125 9611-92-2577
<b>Service Kit for Flushed Shaft Seal</b>			
○	1	Service kit, EPDM .....	C/SIC 9611-92-2126 SIC/SIC 9611-92-2582
○	1	Service kit, NBR .....	9611-92-2127 9611-92-2583
○	1	Service kit, FPM .....	9611-92-2128 9611-92-2584
○	1	Service kit, PTFE .....	9611-92-2129 9611-92-2585
<b>Service Kit for Double Mechanical Shaft Seal</b>			
✧	1	Service kit, EPDM .....	C/SIC 9611-92-2218 SIC/SIC 9611-92-2590
✧	1	Service kit, NBR .....	9611-92-2219 9611-92-2591
✧	1	Service kit, FPM .....	9611-92-2220 9611-92-2592
✧	1	Service kit, PTFE .....	9611-92-2221 9611-92-2593
Parts marked with →, ➤, ◆, □, ○, ✧ are included in the service kits.			
<b>Conversion Kits</b>			
1	Single to flushed shaft seal .....	9611-92-2042	
	(The conversion kit contains Pos. 10, 40, 41, 42, 43, 44, 45)		
1	Single to double mechanical shaft seal .....	9611-92-2175	
	(The conversion kit contains Pos. 14, 15, 40a, 41, 42, 44, 50, 51, 52)		
1	Flushed to double mechanical shaft seal .....	9611-92-2176	
	(The conversion kit contains Pos. 14, 40a, 50, 51, 52)		
<b>Accessories</b>			
1	Tool complete .....	9612-9036-01	

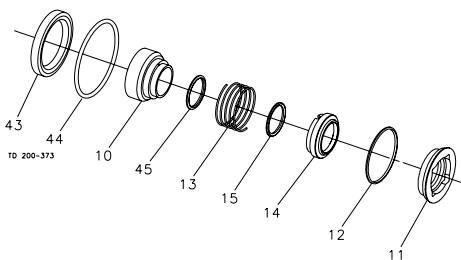
## Recommended Spare Parts: Service kits

Alfa Laval  
8201 104th Street  
Pleasant Prairie, WI 53158-0909  
Telephone: 800-558-2060  
Fax: 262-947-4724

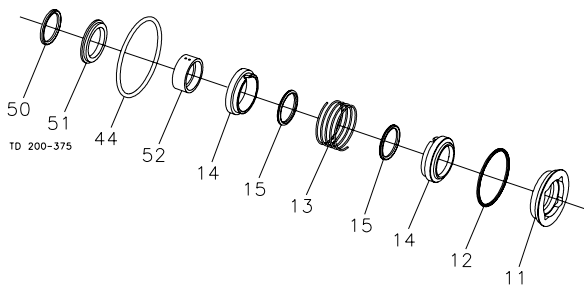
Single Shaft Seal



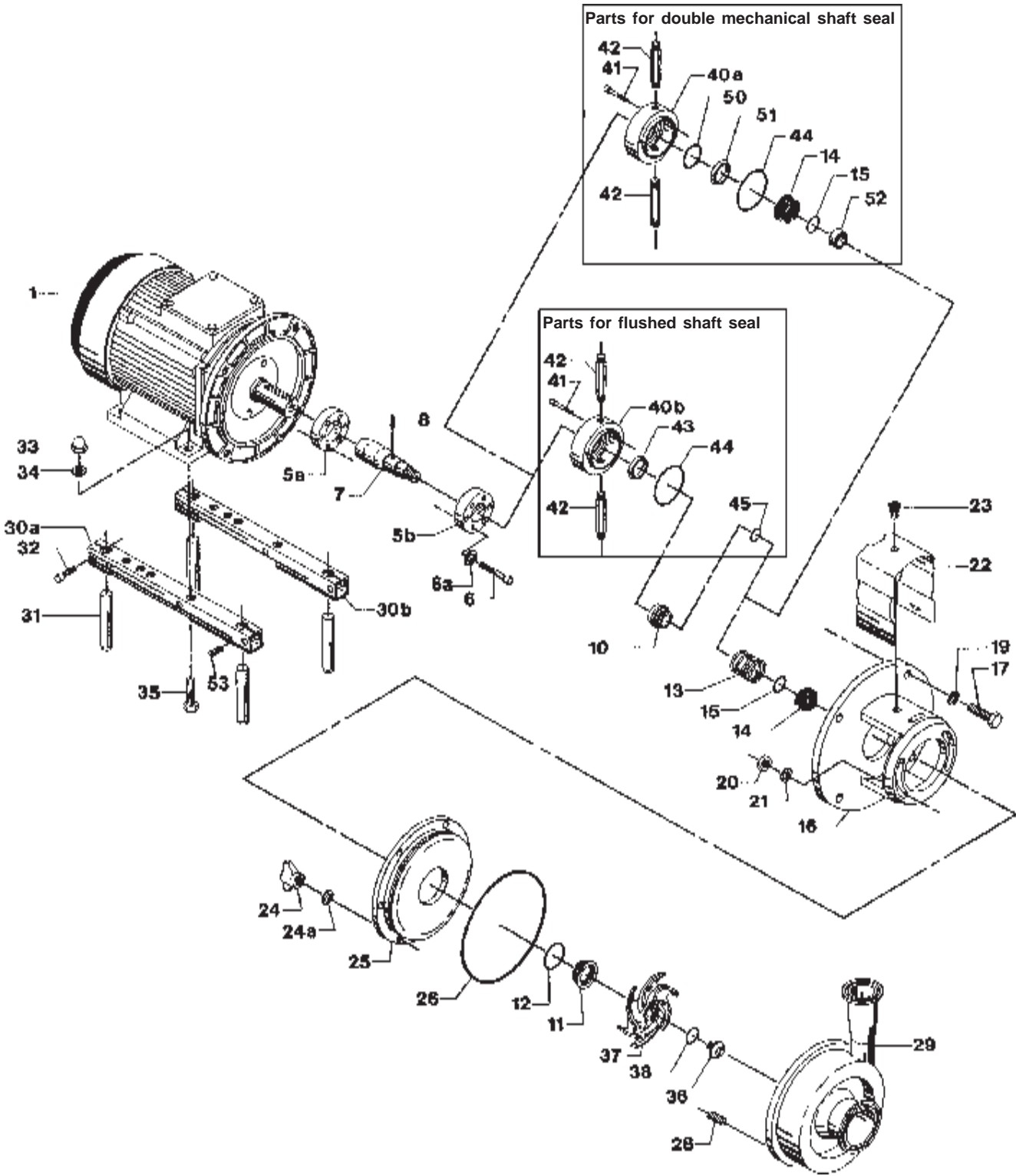
Flushed Shaft Seal



Double Mechanical Shaft Seal







# Centrifugal Pump LKH-25

Pos.	Qty.	Description	3-5 Hp Part No.	7.5-10 Hp Part No.	15-20 Hp Part No.
1	1	Motor			
5a	1	Compression ring with thread .....	9612-13-3602	9612-13-3606	9612-13-3603
5b	1	Compression ring without thread .....	9612-13-3702	9612-13-3706	9612-13-3703
6	6	Screw .....	9611-99-3196	9611-99-3197	9611-99-3197
6a	6	Washer .....	9611-99-3199	9611-99-3199	9611-99-3199
7	1	Stub shaft .....	9612-13-3102	9612-13-3202	9612-13-3302
8	1	Connex pin .....	9611-99-0622	9611-99-0622	9611-99-0622
10	1	Drive ring - single shaft seal .....	9612-13-7701	9612-13-7701	9612-13-7701
	1	Drive ring - flush shaft seal .....	9612-13-9701	9612-13-9701	9612-13-9701
11→>◆□○◆	1	Stationary seal ring, SC .....	9612-13-7901	9612-13-7901	9612-13-7901
12→>◆□○◆	1	Stationary O-ring, EPDM (standard) .....	9611-99-2149	9611-99-2149	9611-99-2149
	1	Stationary O-ring, FPM .....	9611-99-2150	9611-99-2150	9611-99-2150
	1	Stationary O-ring, NBR .....	9611-99-2151	9611-99-2151	9611-99-2151
	1	Stationary O-ring, PTFE .....	9611-99-2152	9611-99-2152	9611-99-2152
13→>◆□○◆	1	Spring .....	9612-13-7601	9612-13-7601	9612-13-7601
14→>□○	1	Rotating seal ring, Carbon .....	9612-13-6401	9612-13-6401	9612-13-6401
	1	Rotating seal ring, SC .....	9612-13-6402	9612-13-6402	9612-13-6402
◆◆	2	Rotating seal ring, Carbon .....	9612-13-6401	9612-13-6401	9612-13-6401
	2	Rotating seal ring, SC .....	9612-13-6402	9612-13-6402	9612-13-6402
15→>□○	1	Rotating O-ring, EPDM (standard) .....	9611-99-2145	9611-99-2145	9611-99-2145
	1	Rotating O-ring, FPM .....	9611-99-2146	9611-99-2146	9611-99-2146
	1	Rotating O-ring, NBR .....	9611-99-2147	9611-99-2147	9611-99-2147
	1	Rotating O-ring, PTFE .....	9611-99-2148	9611-99-2148	9611-99-2148
◆◆	2	Rotating O-ring, EPDM (standard) .....	9611-99-2145	9611-99-2145	9611-99-2145
	2	Rotating O-ring, FPM .....	9611-99-2146	9611-99-2146	9611-99-2146
	2	Rotating O-ring, NBR .....	9611-99-2147	9611-99-2147	9611-99-2147
	2	Rotating O-ring, PTFE .....	9611-99-2148	9611-99-2148	9611-99-2148
16	1	Adaptor .....	9612-13-5911	9612-13-5912	9612-13-5913
17	4	Adaptor screw .....	180148	180148	180148
19	4	Adaptor spring washer .....	189971	189971	189971
20	2	Adaptor nut .....	9611-99-0353	9611-99-0353	9611-99-0353
21	2	Washer .....	9611-99-2559	9611-99-2559	9611-99-2559
22	1	Safety guard .....	9612-13-1106	9612-13-1110	9612-13-1108
23	1	Safety guard screw .....	9611-99-2544	9611-99-2544	9611-99-2544
24	6	Wingnuts .....	9611-41-6892	9611-41-6892	9611-41-6892
24a	6	Spring washer .....	9611-99-1887	9611-99-1887	9611-99-1887
25	1	Back plate polished .....	9612-13-8426	9612-13-8426	9612-13-8426
26□○◆	1	Joint ring, EPDM (standard) .....	9611-99-2983	9611-99-2983	9611-99-2983
	1	Joint ring, FPM .....	9611-99-2985	9611-99-2985	9611-99-2985
	1	Joint ring, NBR .....	9611-99-2984	9611-99-2984	9611-99-2984
	1	Joint ring, PTFE/ØY .....	9611-99-2986	9611-99-2986	9611-99-2986
28	6	Stud bolt .....	9611-99-2169	9611-99-2169	9611-99-2169
29	1	Pump casing .....	9612-49-2509	9612-49-2509	9612-49-2509
30a-35	1	Leg assembly .....	481661	481663	481665
36	1	Impeller screw .....	9612-13-9603	9612-13-9603	9612-13-9603
37	1	Impeller polished, full .....	9612425216	9612425216	9612425216
38□○◆	1	Impeller O-ring, EPDM (standard) .....	9611-99-2145	9611-99-2145	9611-99-2145
	1	Impeller O-ring, FPM .....	9611-99-2146	9611-99-2146	9611-99-2146
	1	Impeller O-ring, NBR .....	9611-99-2147	9611-99-2147	9611-99-2147
	1	Impeller O-ring, PTFE .....	9611-99-2148	9611-99-2148	9611-99-2148
40a	1	Seal housing - double mechanical .....	9612-13-3902	9612-13-3902	9612-13-3902
40b	1	Seal housing - flushed .....	9612-13-3901	9612-13-3901	9612-13-3901
41	2	Screw for seal housing .....	9611-99-0203	9611-99-0203	9611-99-0203
42	2	Water flush pipe .....	9612-35-8901	9612-35-8901	9612-35-8901
43>○	1	Lip seal .....	31446-0088-2	31446-0088-2	31446-0088-2
44>◆○◆	1	Seal housing O-ring .....	9611-99-2153	9611-99-2153	9611-99-2153
45>○	1	Drive ring O-ring .....	9611-99-2145	9611-99-2145	9611-99-2145
50◆◆	1	O-ring .....	9611-99-2156	9611-99-2156	9611-99-2156
51◆◆	1	Sec. stationary seal ring, SC .....	9612-13-8302	9612-13-8302	9612-13-8302
52◆◆	1	Spacer .....	9612-30-8901	9612-30-8901	9612-30-8901

Parts marked with →, >, ◆ are included in the seal kits.

Parts marked with →, >, ◆, □, ○, ◆ are included in the service kits.

**Recommended Spare Parts: Service kits**

**Alfa Laval**

Pos.	Qty.	Description	1-40 Hp Part No.
Seal Kit for Single Shaft Seal			
→	1	C/SC seal kit, EPDM.....	9612-1296-09
→	1	C/SC seal kit, NBR.....	9612-1296-10
→	1	C/SC seal kit, FPM.....	9612-1296-11
→	1	SC/SC seal kit, EPDM.....	9612-1296-05
→	1	SC/SC seal kit, NBR.....	9612-1296-06
→	1	SC/SC seal kit, FPM.....	9612-1296-07

Seal Kit for Flushed Shaft Seal			
➤	1	C/SC seal kit, EPDM.....	9612-1296-25
➤	1	C/SC seal kit, NBR.....	9612-1296-26
➤	1	C/SC seal kit, FPM.....	9612-1296-27
➤	1	SC/SC seal kit, EPDM.....	9612-1296-29
➤	1	SC/SC seal kit, NBR.....	9612-1296-30
➤	1	SC/SC seal kit, FPM.....	9612-1296-31

Seal Kit for Double Mechanical Shaft Seal			
◆	1	C/SC seal kit, EPDM.....	9612-1296-13
◆	1	C/SC seal kit, NBR.....	9612-1296-14
◆	1	C/SC seal kit, FPM.....	9612-1296-15
◆	1	SC/SC seal kit, EPDM.....	9612-1296-17
◆	1	SC/SC seal kit, NBR.....	9612-1296-18
◆	1	SC/SC seal kit, FPM.....	9612-1296-19

Parts marked with à, Ø, ◆ are included in the seal kits.

Service Kit for Single Shaft Seal			C/SIC	SIC/SIC
□	1	Service kit, EPDM.....	9611-92-2182	9611-92-2598
□	1	Service kit, NBR.....	9611-92-2183	9611-92-2599
□	1	Service kit, FPM.....	9611-92-2184	9611-92-2600
□	1	Service kit, PTFE.....	9611-92-2185	9611-92-2601

Service Kit for Flushed Shaft Seal			C/SIC	SIC/SIC
○	1	Service kit, EPDM.....	9611-92-2190	9611-92-2606
○	1	Service kit, NBR.....	9611-92-2191	9611-92-2607
○	1	Service kit, FPM.....	9611-92-2192	9611-92-2608
○	1	Service kit, PTFE.....	9611-92-2193	9611-92-2609

Service Kit for Double Mechanical Shaft Seal			C/SIC	SIC/SIC
◇	1	Service kit, EPDM.....	9911-92-2226	9611-92-2614
◇	1	Service kit, NBR.....	9611-92-2227	9611-92-2615
◇	1	Service kit, FPM.....	9611-92-2228	9611-92-2616
◇	1	Service kit, PTFE.....	9611-92-2229	9611-92-2617

Parts marked with à, Ø, ◆, □, ○, ◇ are included in the service kits.

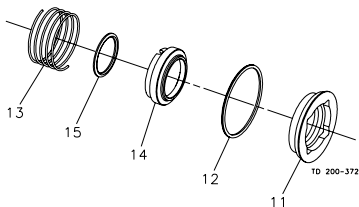
Conversion Kits			
1	Single to flushed shaft seal.....	9611-92-2042	
	(The conversion kit contains Pos. 10, 40, 41, 42, 43, 44, 45)		
1	Single to double mechanical shaft seal.....	9611-92-2175	
	(The conversion kit contains Pos. 14, 15, 40a, 41, 42, 44, 50, 51, 52)		
1	Flushed to double mechanical shaft seal.....	9611-92-2176	
	(The conversion kit contains Pos. 14, 40a, 50, 51, 52)		

Accessories			
1	Tool complete.....	9612-9036-01	

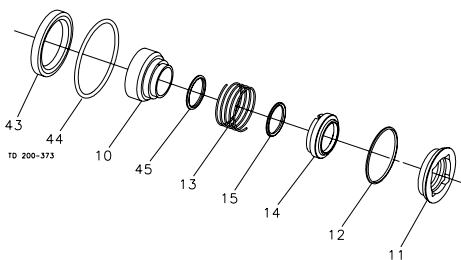
#### Recommended Spare Parts: Service kits

Alfa Laval  
8201 104th Street  
Pleasant Prairie, WI 53158-0909  
Telephone: 800-558-2060  
Fax: 262-947-4724

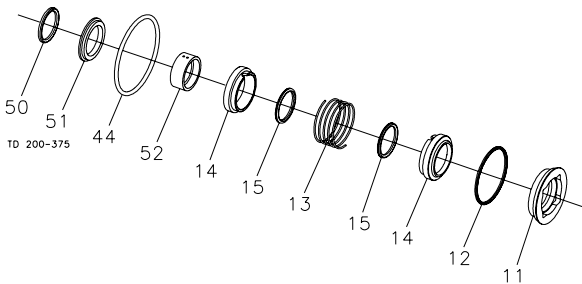
Single Shaft Seal

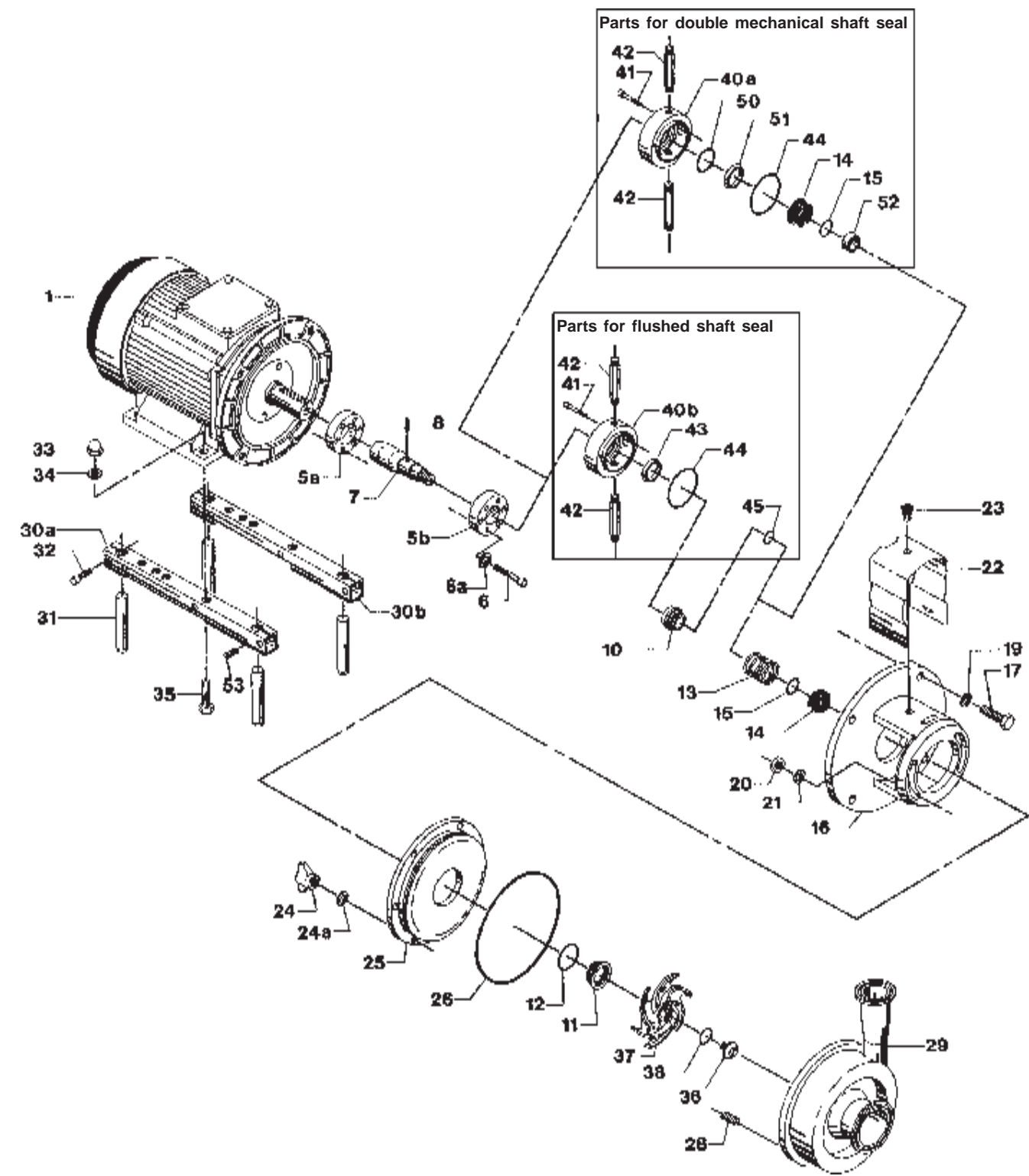


Flushed Shaft Seal



Double Mechanical Shaft Seal





# Centrifugal Pump LKH-35

Pos.	Qty.	Description	3-5 Hp Part No.	7.5-10 Hp Part No.	15-20 Hp Part No.	25-30 Hp Part No.
1	1	Motor				
5a	1	Compression ring with thread .....	9612-13-3602	9612-13-3606	9612-13-3603	9612-13-3603
5b	1	Compression ring without thread .....	9612-13-3702	9612-13-3706	9612-13-3703	9612-13-3703
6	6	Screw .....	9611-99-3196	9611-99-3197	9611-99-3197	9611-99-3198
6a	6	Washer .....	9611-99-3199	9611-99-3199	9611-99-3199	9611-99-3199
7	1	Stub shaft .....	9612-13-3102	9612-13-3202	9612-13-3302	9612-13-3302
8	1	Connex pin .....	9611-99-0622	9611-99-0622	9611-99-0622	9611-99-0622
10	1	Drive ring - single shaft seal .....	9612-13-7701	9612-13-7701	9612-13-7701	9612-13-7701
	1	Drive ring - flush shaft seal .....	9612-13-9701	9612-13-9701	9612-13-9701	9612-13-9701
11→▶◆□○◆	1	Stationary seal ring, SC .....	9612-13-7901	9612-13-7901	9612-13-7901	9612-13-7901
12→▶◆□○◆	1	Stationary O-ring, EPDM (standard) .....	9611-99-2149	9611-99-2149	9611-99-2149	9611-99-2149
	1	Stationary O-ring, FPM .....	9611-99-2150	9611-99-2150	9611-99-2150	9611-99-2150
	1	Stationary O-ring, NBR .....	9611-99-2151	9611-99-2151	9611-99-2151	9611-99-2151
	1	Stationary O-ring, PTFE .....	9611-99-2152	9611-99-2152	9611-99-2152	9611-99-2152
13→▶◆□○◆	1	Spring .....	9612-13-7601	9612-13-7601	9612-13-7601	9612-13-7601
14→▶□○	1	Rotating seal ring, Carbon .....	9612-13-6401	9612-13-6401	9612-13-6401	9612-13-6401
	1	Rotating seal ring, SC .....	9612-13-6402	9612-13-6402	9612-13-6402	9612-13-6402
◆◆	2	Rotating seal ring, Carbon .....	9612-13-6401	9612-13-6401	9612-13-6401	9612-13-6401
	2	Rotating seal ring, SC .....	9612-13-6402	9612-13-6402	9612-13-6402	9612-13-6402
15→▶□○	1	Rotating O-ring, EPDM (standard) .....	9611-99-2145	9611-99-2145	9611-99-2145	9611-99-2145
	1	Rotating O-ring, FPM .....	9611-99-2146	9611-99-2146	9611-99-2146	9611-99-2146
	1	Rotating O-ring, NBR .....	9611-99-2147	9611-99-2147	9611-99-2147	9611-99-2147
	1	Rotating O-ring, PTFE .....	9611-99-2148	9611-99-2148	9611-99-2148	9611-99-2148
◆◆	2	Rotating O-ring, EPDM (standard) .....	9611-99-2145	9611-99-2145	9611-99-2145	9611-99-2145
	2	Rotating O-ring, FPM .....	9611-99-2146	9611-99-2146	9611-99-2146	9611-99-2146
	2	Rotating O-ring, NBR .....	9611-99-2147	9611-99-2147	9611-99-2147	9611-99-2147
	2	Rotating O-ring, PTFE .....	9611-99-2148	9611-99-2148	9611-99-2148	9611-99-2148
16	1	Adaptor .....	9612-13-5911	9612-13-5912	9612-13-5913	9612-135918
17	4	Adaptor screw .....	180148	180148	180148	180148
19	4	Adaptor spring washer .....	189971	189971	189971	189971
20	2	Adaptor nut .....	9611-99-0353	9611-99-0353	9611-99-0353	9611-99-0353
21	2	Washer .....	9611-99-2559	9611-99-2559	9611-99-2559	9611-99-2559
22	1	Safety guard .....	9612-13-1106	9612-13-1110	9612-13-1108	9612-13-1108
23	1	Safety guard screw .....	9611-99-2544	9611-99-2544	9611-99-2544	9611-99-2544
24	6	Wingnuts .....	9611-41-6892	9611-41-6892	9611-41-6892	9611-41-6892
24a	6	Spring washer .....	9611-99-1887	9611-99-1887	9611-99-1887	9611-99-1887
25	1	Back plate polished .....	9612-13-8426	9612-13-8426	9612-13-8426	9612-13-8426
26□○◆	1	Joint ring, EPDM (standard) .....	9611-99-2983	9611-99-2983	9611-99-2983	9611-99-2983
	1	Joint ring, FPM .....	9611-99-2985	9611-99-2985	9611-99-2985	9611-99-2985
	1	Joint ring, NBR .....	9611-99-2984	9611-99-2984	9611-99-2984	9611-99-2984
	1	Joint ring, PTFE/SFY .....	9611-99-2986	9611-99-2986	9611-99-2986	9611-99-2986
28	6	Stud bolt .....	9611-99-2169	9611-99-2169	9611-99-2169	9611-99-2169
29	1	Pump casing .....	9612-49-2514	9612-49-2514	9612-49-2514	9612-49-2514
30a-35	1	Leg assembly .....	481661	481663	481665	481669
36	1	Impeller screw .....	9612-13-9603	9612-13-9603	9612-13-9603	9612-13-9603
37	1	Impeller polished, full .....	9612434116	9612434116	9612434116	9612434116
38□○◆	1	Impeller O-ring, EPDM (standard) .....	9611-99-2145	9611-99-2145	9611-99-2145	9611-99-2145
	1	Impeller O-ring, FPM .....	9611-99-2146	9611-99-2146	9611-99-2146	9611-99-2146
	1	Impeller O-ring, NBR .....	9611-99-2147	9611-99-2147	9611-99-2147	9611-99-2147
	1	Impeller O-ring, PTFE .....	9611-99-2148	9611-99-2148	9611-99-2148	9611-99-2148
40a	1	Seal housing - double mechanical .....	9612-13-3902	9612-13-3902	9612-13-3902	9612-13-3902
40b	1	Seal housing - flushed .....	9612-13-3901	9612-13-3901	9612-13-3901	9612-13-3901
41	2	Screw for seal housing .....	9611-99-0203	9611-99-0203	9611-99-0203	9611-99-0203
42	2	Water flush pipe .....	9612-35-8901	9612-35-8901	9612-35-8901	9612-35-8901
43>○	1	Lip seal .....	31446-0088-2	31446-0088-2	31446-0088-2	31446-0088-2
44>◆○◆	1	Seal housing O-ring .....	9611-99-2153	9611-99-2153	9611-99-2153	9611-99-2153
45>○	1	Drive ring O-ring .....	9611-99-2145	9611-99-2145	9611-99-2145	9611-99-2145
50◆◆	1	O-ring .....	9611-99-2156	9611-99-2156	9611-99-2156	9611-99-2156
51◆◆	1	Sec. stationary seal ring, SC .....	9612-13-8302	9612-13-8302	9612-13-8302	9612-13-8302
52◆◆	1	Spacer .....	9612-30-8901	9612-30-8901	9612-30-8901	9612-30-8901

Parts marked with →, >, ◆ are included in the seal kits.

Parts marked with →, >, ◆, □, ○, ◇ are included in the service kits.

Recommended Spare Parts: Service kits

**Alfa Laval**

Pos.	Qty.	Description	1-40 Hp Part No.
<b>Seal Kit for Single Shaft Seal</b>			
→	1	C/SC seal kit, EPDM .....	9612-1296-09
→	1	C/SC seal kit, NBR .....	9612-1296-10
→	1	C/SC seal kit, FPM .....	9612-1296-11
→	1	SC/SC seal kit, EPDM .....	9612-1296-05
→	1	SC/SC seal kit, NBR .....	9612-1296-06
→	1	SC/SC seal kit, FPM .....	9612-1296-07

<b>Seal Kit for Flushed Shaft Seal</b>			
➤	1	C/SC seal kit, EPDM .....	9612-1296-25
➤	1	C/SC seal kit, NBR .....	9612-1296-26
➤	1	C/SC seal kit, FPM .....	9612-1296-27
➤	1	SC/SC seal kit, EPDM .....	9612-1296-29
➤	1	SC/SC seal kit, NBR .....	9612-1296-30
➤	1	SC/SC seal kit, FPM .....	9612-1296-31

<b>Seal Kit for Double Mechanical Shaft Seal</b>			
◆	1	C/SC seal kit, EPDM .....	9612-1296-13
◆	1	C/SC seal kit, NBR .....	9612-1296-14
◆	1	C/SC seal kit, FPM .....	9612-1296-15
◆	1	SC/SC seal kit, EPDM .....	9612-1296-17
◆	1	SC/SC seal kit, NBR .....	9612-1296-18
◆	1	SC/SC seal kit, FPM .....	9612-1296-19

Parts marked with →, ➤, ◆ are included in the seal kits.

<b>Service Kit for Single Shaft Seal</b>		<b>C/SIC</b>	<b>SIC/SIC</b>
□	1	Service kit, EPDM .....	9611-92-2182
□	1	Service kit, NBR .....	9611-92-2183
□	1	Service kit, FPM .....	9611-92-2184
□	1	Service kit, PTFE .....	9611-92-2185

<b>Service Kit for Flushed Shaft Seal</b>		<b>C/SIC</b>	<b>SIC/SIC</b>
○	1	Service kit, EPDM .....	9611-92-2190
○	1	Service kit, NBR .....	9611-92-2191
○	1	Service kit, FPM .....	9611-92-2192
○	1	Service kit, PTFE .....	9611-92-2193

<b>Service Kit for Double Mechanical Shaft Seal</b>		<b>C/SIC</b>	<b>SIC/SIC</b>
◇	1	Service kit, EPDM .....	9911-92-2226
◇	1	Service kit, NBR .....	9611-92-2227
◇	1	Service kit, FPM .....	9611-92-2228
◇	1	Service kit, PTFE .....	9611-92-2229

Parts marked with →, ➤, ◆, □, ○, ◇ are included in the service kits.

## Conversion Kits

1	Single to flushed shaft seal.....	9611-92-2042
	(The conversion kit contains Pos. 10, 40, 41, 42, 43, 44, 45)	
1	Single to double mechanical shaft seal .....	9611-92-2175
	(The conversion kit contains Pos. 14, 15, 40a, 41, 42, 44, 50, 51, 52)	
1	Flushed to double mechanical shaft seal.....	9611-92-2176
	(The conversion kit contains Pos. 14, 40a, 50, 51, 52)	

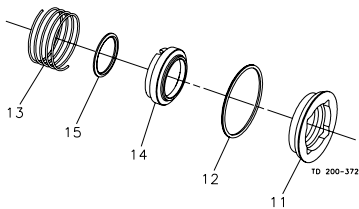
## Accessories

1	Tool complete .....	9612-9036-01
---	---------------------	--------------

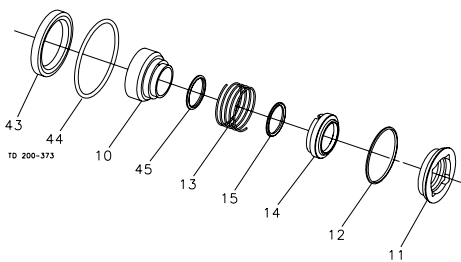
## Recommended Spare Parts: Service kits

Alfa Laval  
8201 104th Street  
Pleasant Prairie, WI 53158-0909  
Telephone: 800-558-2060  
Fax: 262-947-4724

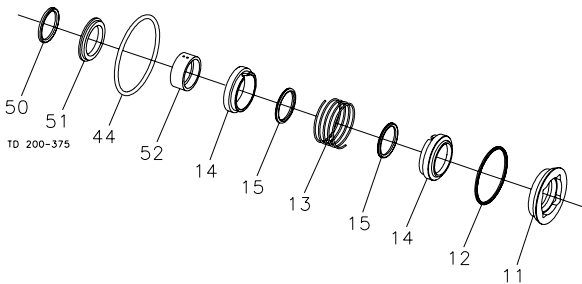
Single Shaft Seal



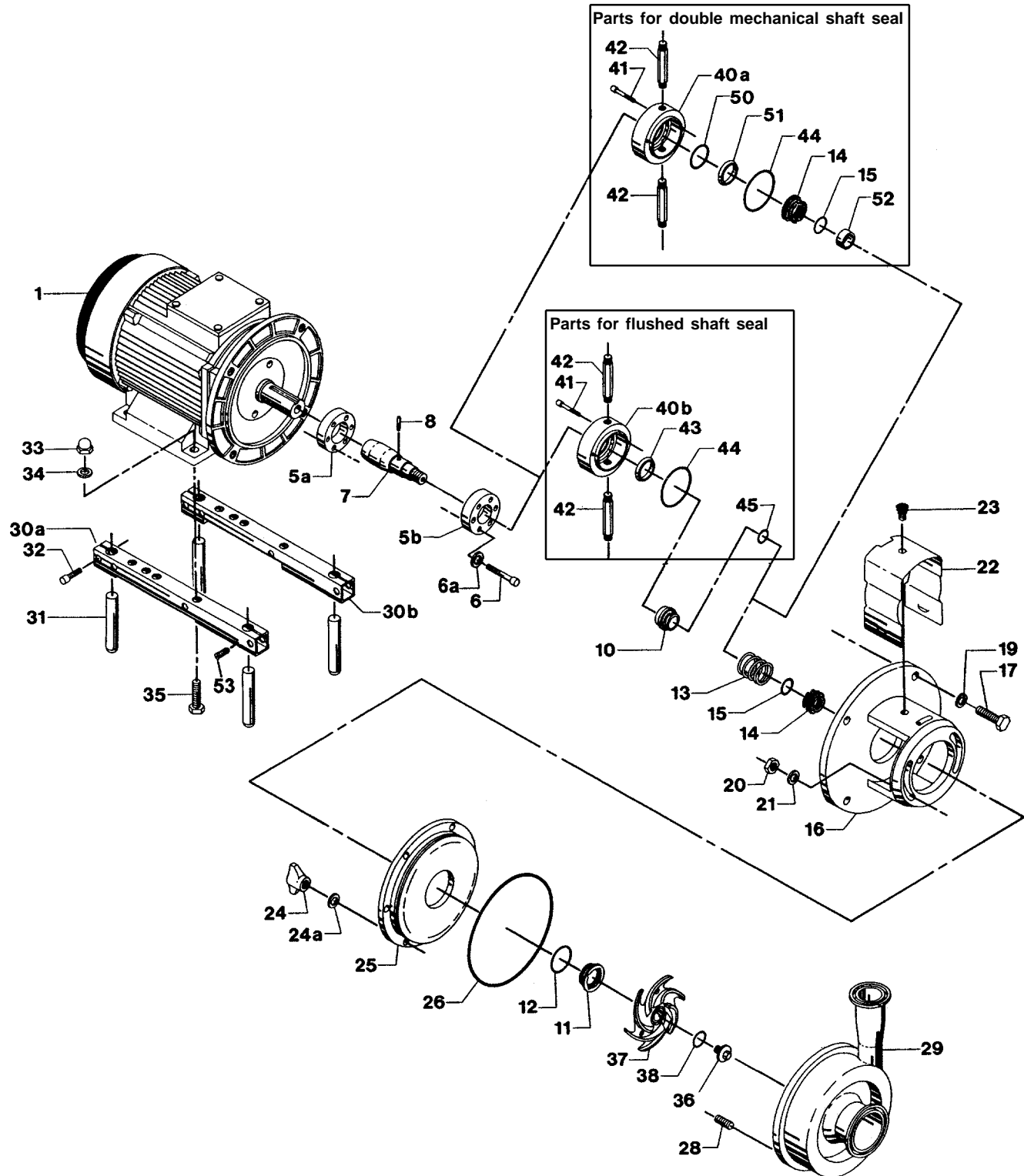
Flushed Shaft Seal



Double Mechanical Shaft Seal







# Centrifugal Pump LKH-40

Pos.	Qty.	Description	7.5-10 Hp Part No.	15-20 Hp Part No.	25-30 Hp Part No.
1	1	Motor			
5a	1	Compression ring with thread .....	9612-13-3606	9612-13-3603	9612-13-3603
5b	1	Compression ring without thread .....	9612-13-3706	9612-13-3703	9612-13-3703
6	6	Screw .....	9611-99-3197	9611-99-3197	9611-99-3198
6a	6	Washer .....	9611-99-3199	9611-99-3199	9611-99-3199
7	1	Stub shaft .....	9612-13-3202	9612-13-3302	9612-13-3302
8	1	Connex pin .....	9611-99-0622	9611-99-0622	9611-99-0622
10	1	Drive ring - single shaft seal .....	9612-13-7701	9612-13-7701	9612-13-7701
	1	Drive ring - flush shaft seal .....	9612-13-9701	9612-13-9701	9612-13-9701
11→>◆□○◇	1	Stationary seal ring, SC .....	9612-13-7901	9612-13-7901	9612-13-7901
12→>◆□○◇	1	Stationary O-ring, EPDM (standard) .....	9611-99-2149	9611-99-2149	9611-99-2149
	1	Stationary O-ring, FPM .....	9611-99-2150	9611-99-2150	9611-99-2150
	1	Stationary O-ring, NBR .....	9611-99-2151	9611-99-2151	9611-99-2151
	1	Stationary O-ring, PTFE .....	9611-99-2152	9611-99-2152	9611-99-2152
13→>◆□○◇	1	Spring .....	9612-13-7601	9612-13-7601	9612-13-7601
14→>□○	1	Rotating seal ring, Carbon .....	9612-13-6401	9612-13-6401	9612-13-6401
	1	Rotating seal ring, SC .....	9612-13-6402	9612-13-6402	9612-13-6402
◆◇	2	Rotating seal ring, Carbon .....	9612-13-6401	9612-13-6401	9612-13-6401
	2	Rotating seal ring, SC .....	9612-13-6402	9612-13-6402	9612-13-6402
15→>□○	1	Rotating O-ring, EPDM (standard) .....	9611-99-2145	9611-99-2145	9611-99-2145
	1	Rotating O-ring, FPM .....	9611-99-2146	9611-99-2146	9611-99-2146
	1	Rotating O-ring, NBR .....	9611-99-2147	9611-99-2147	9611-99-2147
	1	Rotating O-ring, PTFE .....	9611-99-2148	9611-99-2148	9611-99-2148
◆◇	2	Rotating O-ring, EPDM (standard) .....	9611-99-2145	9611-99-2145	9611-99-2145
	2	Rotating O-ring, FPM .....	9611-99-2146	9611-99-2146	9611-99-2146
	2	Rotating O-ring, NBR .....	9611-99-2147	9611-99-2147	9611-99-2147
	2	Rotating O-ring, PTFE .....	9611-99-2148	9611-99-2148	9611-99-2148
16	1	Adaptor .....	9612-13-5912	9612-13-5913	9612-13-5918
17	4	Adaptor screw .....	180148	180148	180148
19	4	Adaptor spring washer .....	189971	189971	189971
20	2	Adaptor nut .....	9611-99-0353	9611-99-0353	9611-99-0353
21	2	Washer .....	9611-99-2559	9611-99-2559	9611-99-2559
22	1	Safety guard .....	9612-13-1110	9612-13-1108	9612-13-1108
23	1	Safety guard screw .....	9611-99-2544	9611-99-2544	9611-99-2544
24	6	Wingnuts .....	9611-41-6892	9611-41-6892	9611-41-6892
24a	6	Spring washer .....	9611-99-1887	9611-99-1887	9611-99-1887
25	1	Back plate polished .....	9612-13-8418	9612-13-8418	9612-13-8418
26□○◇	1	Joint ring, EPDM (standard) .....	9611-99-2171	9611-99-2171	9611-99-2171
	1	Joint ring, FPM .....	9611-99-2172	9611-99-2172	9611-99-2172
	1	Joint ring, NBR .....	9611-99-2173	9611-99-2173	9611-99-2173
	1	Joint ring, PTFE/SFY .....	9611-99-2174	9611-99-2174	9611-99-2174
28	6	Stud bolt .....	9611-99-2169	9611-99-2169	9611-99-2169
29	1	Pump casing .....	9612-12-9101	9612-12-9101	9612-12-9101
30a-35	1	Leg assembly .....	481663	481665	481669
36	1	Impeller screw .....	9612-13-9603	9612-13-9603	9612-13-9603
37	1	Impeller polished, full .....	9612131816	9612131816	9612131816
38□○◇	1	Impeller O-ring, EPDM (standard) .....	9611-99-2145	9611-99-2145	9611-99-2145
	1	Impeller O-ring, FPM .....	9611-99-2146	9611-99-2146	9611-99-2146
	1	Impeller O-ring, NBR .....	9611-99-2147	9611-99-2147	9611-99-2147
	1	Impeller O-ring, PTFE .....	9611-99-2148	9611-99-2148	9611-99-2148
40a	1	Seal housing - double mechanical .....	9612-13-3902	9612-13-3902	9612-13-3902
40b	1	Seal housing - flushed .....	9612-13-3901	9612-13-3901	9612-13-3901
41	2	Screw for seal housing .....	9611-99-0203	9611-99-0203	9611-99-0203
42	2	Water flush pipe .....	9612-35-8901	9612-35-8901	9612-35-8901
43>○	1	Lip seal .....	31446-0088-2	31446-0088-2	31446-0088-2
44>◆○◇	1	Seal housing O-ring .....	9611-99-2153	9611-99-2153	9611-99-2153
45>○	1	Drive ring O-ring .....	9611-99-2145	9611-99-2145	9611-99-2145
50◆◇	1	O-ring .....	9611-99-2156	9611-99-2156	9611-99-2156
51◆◇	1	Sec. stationary seal ring, SC .....	9612-13-8302	9612-13-8302	9612-13-8302
52◆◇	1	Spacer .....	9612-30-8901	9612-30-8901	9612-30-8901

Parts marked with →, >, ◆ are included in the seal kits.

Parts marked with →, >, ◆, □, ○, ◇ are included in the service kits.

Recommended Spare Parts: Service kits

**Alfa Laval**

Pos.	Qty.	Description	1-40 Hp Part No.
<b>Seal Kit for Single Shaft Seal</b>			
→	1	C/SC seal kit, EPDM .....	9612-1296-09
→	1	C/SC seal kit, NBR .....	9612-1296-10
→	1	C/SC seal kit, FPM .....	9612-1296-11
→	1	SC/SC seal kit, EPDM .....	9612-1296-05
→	1	SC/SC seal kit, NBR .....	9612-1296-06
→	1	SC/SC seal kit, FPM .....	9612-1296-07

<b>Seal Kit for Flushed Shaft Seal</b>			
➤	1	C/SC seal kit, EPDM .....	9612-1296-25
➤	1	C/SC seal kit, NBR .....	9612-1296-26
➤	1	C/SC seal kit, FPM .....	9612-1296-27
➤	1	SC/SC seal kit, EPDM .....	9612-1296-29
➤	1	SC/SC seal kit, NBR .....	9612-1296-30
➤	1	SC/SC seal kit, FPM .....	9612-1296-31

<b>Seal Kit for Double Mechanical Shaft Seal</b>			
◆	1	C/SC seal kit, EPDM .....	9612-1296-13
◆	1	C/SC seal kit, NBR .....	9612-1296-14
◆	1	C/SC seal kit, FPM .....	9612-1296-15
◆	1	SC/SC seal kit, EPDM .....	9612-1296-17
◆	1	SC/SC seal kit, NBR .....	9612-1296-18
◆	1	SC/SC seal kit, FPM .....	9612-1296-19

Parts marked with →, ➤, ◆ are included in the seal kits.

<b>Service Kit for Single Shaft Seal</b>		<b>C/SIC</b>	<b>SIC/SIC</b>
□	1	Service kit, EPDM .....	9611-92-2130
□	1	Service kit, NBR .....	9611-92-2131
□	1	Service kit, FPM .....	9611-92-2132
□	1	Service kit, PTFE .....	9611-92-2133

9611-92-2623
9611-92-2624
9611-92-2625
9611-92-2626

<b>Service Kit for Flushed Shaft Seal</b>		<b>C/SIC</b>	<b>SIC/SIC</b>
○	1	Service kit, EPDM .....	9611-92-2134
○	1	Service kit, NBR .....	9611-92-2135
○	1	Service kit, FPM .....	9611-92-2136
○	1	Service kit, PTFE .....	9611-92-2137

9611-92-2631
9611-92-2632
9611-92-2633
9611-92-2634

<b>Service Kit for Double Mechanical Shaft Seal</b>		<b>C/SIC</b>	<b>SIC/SIC</b>
✧	1	Service kit, EPDM .....	9911-92-2234
✧	1	Service kit, NBR .....	9611-92-2235
✧	1	Service kit, FPM .....	9611-92-2236
✧	1	Service kit, PTFE .....	9611-92-2237

9611-92-2639
9611-92-2640
9611-92-2641
9611-92-2642

Parts marked with →, ➤, ◆, □, ○, ✧ are included in the service kits.

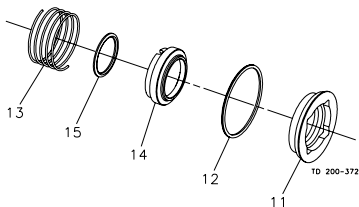
<b>Conversion Kits</b>		
1	Single to flushed shaft seal .....	9611-92-2042
	(The conversion kit contains Pos. 10, 40, 41, 42, 43, 44, 45)	
1	Single to double mechanical shaft seal .....	9611-92-2175
	(The conversion kit contains Pos. 14, 15, 40a, 41, 42, 44, 50, 51, 52)	
1	Flushed to double mechanical shaft seal .....	9611-92-2176
	(The conversion kit contains Pos. 14, 40a, 50, 51, 52)	

<b>Accessories</b>		
1	Tool complete .....	9612-9036-01

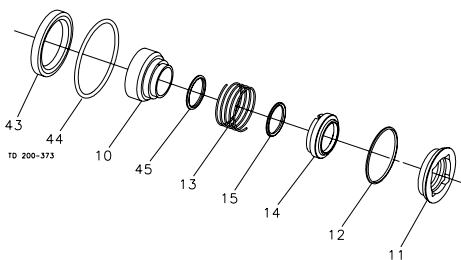
## Recommended Spare Parts: Service kit

Alfa Laval  
8201 104th Street  
Pleasant Prairie, WI 53158-0909  
Telephone: 800-558-2060  
Fax: 262-947-4724

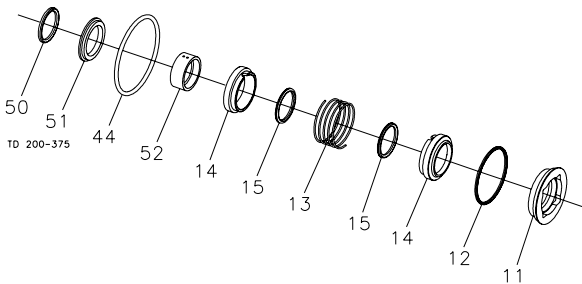
Single Shaft Seal

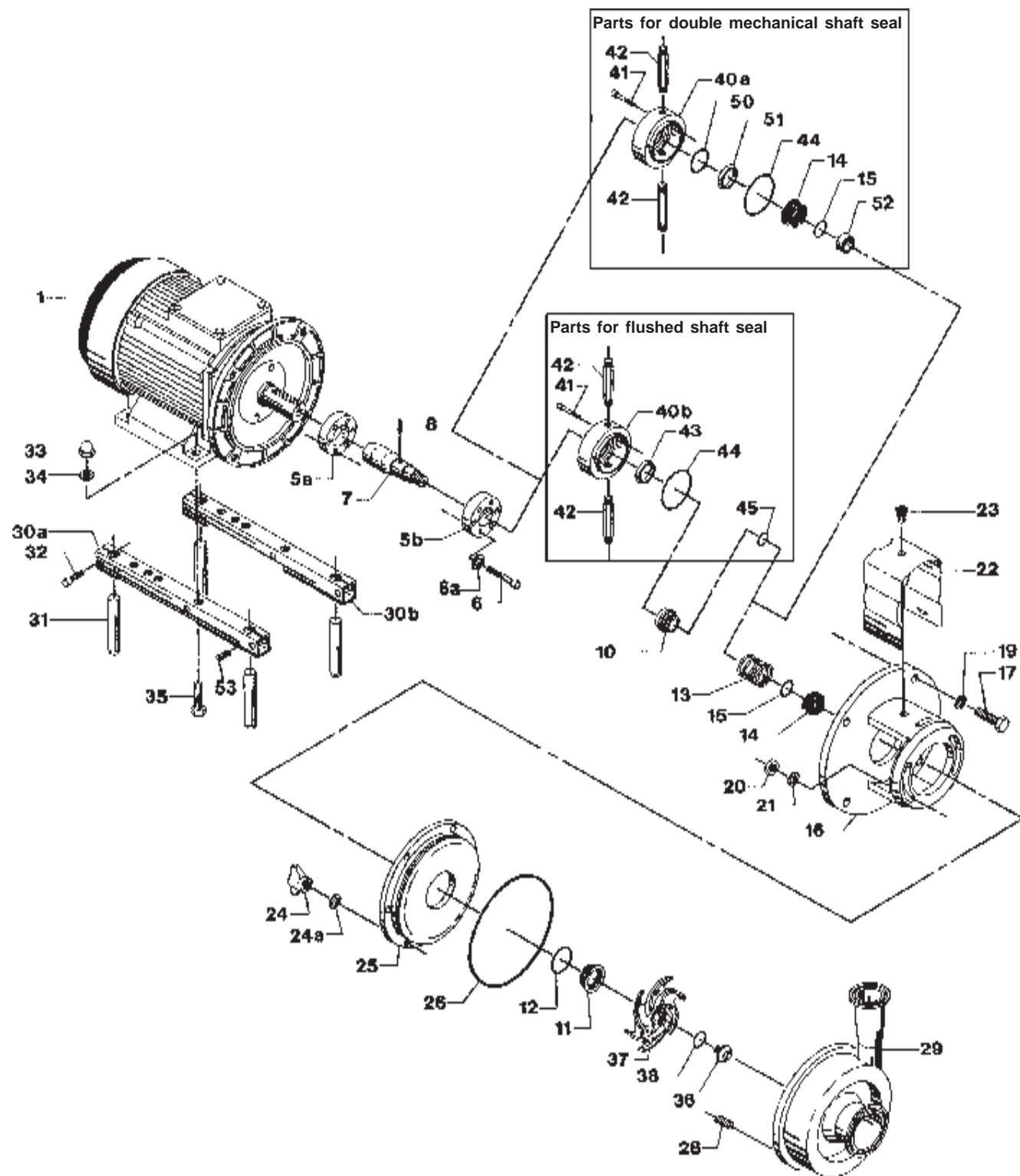


Flushed Shaft Seal



Double Mechanical Shaft Seal





# Centrifugal Pump LKH-45

Pos.	Qty.	Description	7.5-10 Hp Part No.	15-20 Hp Part No.	25-30 Hp Part No.
1	1	Motor			
5a	1	Compression ring with thread .....	9612-13-3606	9612-13-3603	9612-13-3603
5b	1	Compression ring without thread .....	9612-13-3706	9612-13-3703	9612-13-3703
6	6	Screw .....	9611-99-3197	9611-99-3197	9611-99-3198
6a	6	Washer .....	9611-99-3199	9611-99-3199	9611-99-3199
7	1	Stub shaft .....	9612-13-3202	9612-13-3302	9612-13-3302
8	1	Connex pin .....	9611-99-0622	9611-99-0622	9611-99-0622
10	1	Drive ring - single shaft seal .....	9612-13-7701	9612-13-7701	9612-13-7701
	1	Drive ring - flush shaft seal .....	9612-13-9701	9612-13-9701	9612-13-9701
11→>◆□○◇	1	Stationary seal ring, SC .....	9612-13-7901	9612-13-7901	9612-13-7901
12→>◆□○◇	1	Stationary O-ring, EPDM (standard) .....	9611-99-2149	9611-99-2149	9611-99-2149
	1	Stationary O-ring, FPM .....	9611-99-2150	9611-99-2150	9611-99-2150
	1	Stationary O-ring, NBR .....	9611-99-2151	9611-99-2151	9611-99-2151
	1	Stationary O-ring, PTFE .....	9611-99-2152	9611-99-2152	9611-99-2152
13→>◆□○◇	1	Spring .....	9612-13-7601	9612-13-7601	9612-13-7601
14→>□○	1	Rotating seal ring, Carbon .....	9612-13-6401	9612-13-6401	9612-13-6401
	1	Rotating seal ring, SC .....	9612-13-6402	9612-13-6402	9612-13-6402
◆◇	2	Rotating seal ring, Carbon .....	9612-13-6401	9612-13-6401	9612-13-6401
	2	Rotating seal ring, SC .....	9612-13-6402	9612-13-6402	9612-13-6402
15→>□○	1	Rotating O-ring, EPDM (standard) .....	9611-99-2145	9611-99-2145	9611-99-2145
	1	Rotating O-ring, FPM .....	9611-99-2146	9611-99-2146	9611-99-2146
	1	Rotating O-ring, NBR .....	9611-99-2147	9611-99-2147	9611-99-2147
	1	Rotating O-ring, PTFE .....	9611-99-2148	9611-99-2148	9611-99-2148
◆◇	2	Rotating O-ring, EPDM (standard) .....	9611-99-2145	9611-99-2145	9611-99-2145
	2	Rotating O-ring, FPM .....	9611-99-2146	9611-99-2146	9611-99-2146
	2	Rotating O-ring, NBR .....	9611-99-2147	9611-99-2147	9611-99-2147
	2	Rotating O-ring, PTFE .....	9611-99-2148	9611-99-2148	9611-99-2148
16	1	Adaptor .....	9612-13-5912	9612-13-5913	9612-13-5918
17	4	Adaptor screw .....	180148	180148	180148
19	4	Adaptor spring washer .....	189971	189971	189971
20	2	Adaptor nut .....	9611-99-0353	9611-99-0353	9611-99-0353
21	2	Washer .....	9611-99-2559	9611-99-2559	9611-99-2559
22	1	Safety guard .....	9612-13-1110	9612-13-1108	9612-13-1108
23	1	Safety guard screw .....	9611-99-2544	9611-99-2544	9611-99-2544
24	6	Wingnuts .....	9611-41-6892	9611-41-6892	9611-41-6892
24a	6	Spring washer .....	9611-99-1887	9611-99-1887	9611-99-1887
25	1	Back plate polished .....	9612-13-8426	9612-13-8426	9612-13-8426
26□○◇	1	Joint ring, EPDM (standard) .....	9611-99-2983	9611-99-2983	9611-99-2983
	1	Joint ring, FPM .....	9611-99-2985	9611-99-2985	9611-99-2985
	1	Joint ring, NBR .....	9611-99-2984	9611-99-2984	9611-99-2984
	1	Joint ring, PTFE/SFY .....	9611-99-2986	9611-99-2986	9611-99-2986
28	6	Stud bolt .....	9611-99-2169	9611-99-2169	9611-99-2169
29	1	Pump casing .....	883-39461	883-39461	883-39461
30a-35	1	Leg assembly .....	481663	481665	481669
36	1	Impeller screw .....	9612-13-9603	9612-13-9603	9612-13-9603
37	1	Impeller polished, full .....	9612363013	9612363013	9612363013
38□○◇	1	Impeller O-ring, EPDM (standard) .....	9611-99-2145	9611-99-2145	9611-99-2145
	1	Impeller O-ring, FPM .....	9611-99-2146	9611-99-2146	9611-99-2146
	1	Impeller O-ring, NBR .....	9611-99-2147	9611-99-2147	9611-99-2147
	1	Impeller O-ring, PTFE .....	9611-99-2148	9611-99-2148	9611-99-2148
40a	1	Seal housing - double mechanical .....	9612-13-3902	9612-13-3902	9612-13-3902
40b	1	Seal housing - flushed .....	9612-13-3901	9612-13-3901	9612-13-3901
41	2	Screw for seal housing .....	9611-99-0203	9611-99-0203	9611-99-0203
42	2	Water flush pipe .....	9612-35-8901	9612-35-8901	9612-35-8901
43>○	1	Lip seal .....	31446-0088-2	31446-0088-2	31446-0088-2
44>◆○◇	1	Seal housing O-ring .....	9611-99-2153	9611-99-2153	9611-99-2153
45>○	1	Drive ring O-ring .....	9611-99-2145	9611-99-2145	9611-99-2145
50◆◇	1	O-ring .....	9611-99-2156	9611-99-2156	9611-99-2156
51◆◇	1	Sec. stationary seal ring, SC .....	9612-13-8302	9612-13-8302	9612-13-8302
52◆◇	1	Spacer .....	9612-30-8901	9612-30-8901	9612-30-8901

Parts marked with →, >, ◆ are included in the seal kits.

Parts marked with →, >, ◆, □, ○, ◇ are included in the service kits.

Recommended Spare Parts: Service kits

**Alfa Laval**

Pos.	Qty.	Description	1-40 Hp Part No.
<b>Seal Kit for Single Shaft Seal</b>			
→	1	C/SC seal kit, EPDM .....	9612-1296-09
→	1	C/SC seal kit, NBR .....	9612-1296-10
→	1	C/SC seal kit, FPM .....	9612-1296-11
→	1	SC/SC seal kit, EPDM .....	9612-1296-05
→	1	SC/SC seal kit, NBR .....	9612-1296-06
→	1	SC/SC seal kit, FPM .....	9612-1296-07

<b>Seal Kit for Flushed Shaft Seal</b>			
>	1	C/SC seal kit, EPDM .....	9612-1296-25
>	1	C/SC seal kit, NBR .....	9612-1296-26
>	1	C/SC seal kit, FPM .....	9612-1296-27
>	1	SC/SC seal kit, EPDM .....	9612-1296-29
>	1	SC/SC seal kit, NBR .....	9612-1296-30
>	1	SC/SC seal kit, FPM .....	9612-1296-31

<b>Seal Kit for Double Mechanical Shaft Seal</b>			
♦	1	C/SC seal kit, EPDM .....	9612-1296-13
♦	1	C/SC seal kit, NBR .....	9612-1296-14
♦	1	C/SC seal kit, FPM .....	9612-1296-15
♦	1	SC/SC seal kit, EPDM .....	9612-1296-17
♦	1	SC/SC seal kit, NBR .....	9612-1296-18
♦	1	SC/SC seal kit, FPM .....	9612-1296-19

Parts marked with →, >, ♦ are included in the seal kits.

<b>Service Kit for Single Shaft Seal</b>			<b>C/SIC</b>	<b>SIC/SIC</b>
□	1	Service kit, EPDM .....	9611-92-2182	9611-92-2598
□	1	Service kit, NBR .....	9611-92-2183	9611-92-2599
□	1	Service kit, FPM .....	9611-92-2184	9611-92-2600
□	1	Service kit, PTFE .....	9611-92-2185	9611-92-2601

<b>Service Kit for Flushed Shaft Seal</b>			<b>C/SIC</b>	<b>SIC/SIC</b>
○	1	Service kit, EPDM .....	9611-92-2190	9611-92-2606
○	1	Service kit, NBR .....	9611-92-2191	9611-92-2607
○	1	Service kit, FPM .....	9611-92-2192	9611-92-2608
○	1	Service kit, PTFE .....	9611-92-2193	9611-92-2609

<b>Service Kit for Double Mechanical Shaft Seal</b>			<b>C/SIC</b>	<b>SIC/SIC</b>
✧	1	Service kit, EPDM .....	9611-92-2226	9611-92-2614
✧	1	Service kit, NBR .....	9611-92-2227	9611-92-2615
✧	1	Service kit, FPM .....	9611-92-2228	9611-92-2616
✧	1	Service kit, PTFE .....	9611-92-2229	9611-92-2617

Parts marked with →, >, ♦, □, ○, ✧ are included in the service kits.

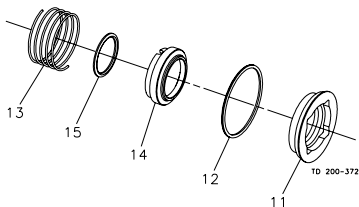
<b>Conversion Kit</b>		
1	Single to flushed shaft seal .....	9611-92-2042
	(The conversion kit contains Pos. 10, 40, 41, 42, 43, 44, 45)	
1	Single to double mechanical shaft seal .....	9611-92-2175
	(The conversion kit contains Pos. 14, 15, 40a, 41, 42, 44, 50, 51, 52)	
1	Flushed to double mechanical shaft seal .....	9611-92-2176
	(The conversion kit contains Pos. 14, 40a, 50, 51, 52)	

<b>Accessories</b>		
1	Tool complete .....	9612-9036-01

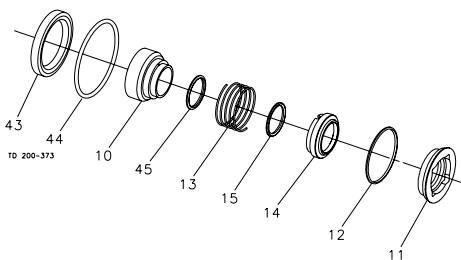
## Recommended Spare Parts: Service kits

Alfa Laval  
8201 104th Street  
Pleasant Prairie, WI 53158-0909  
Telephone: 800-558-2060  
Fax: 262-947-4724

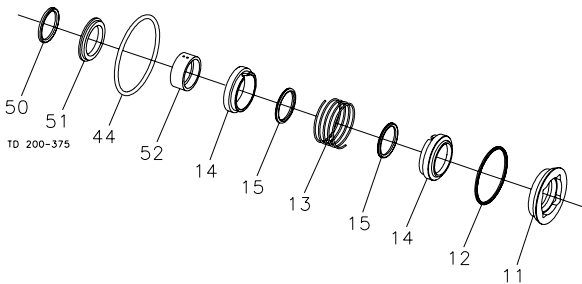
Single Shaft Seal



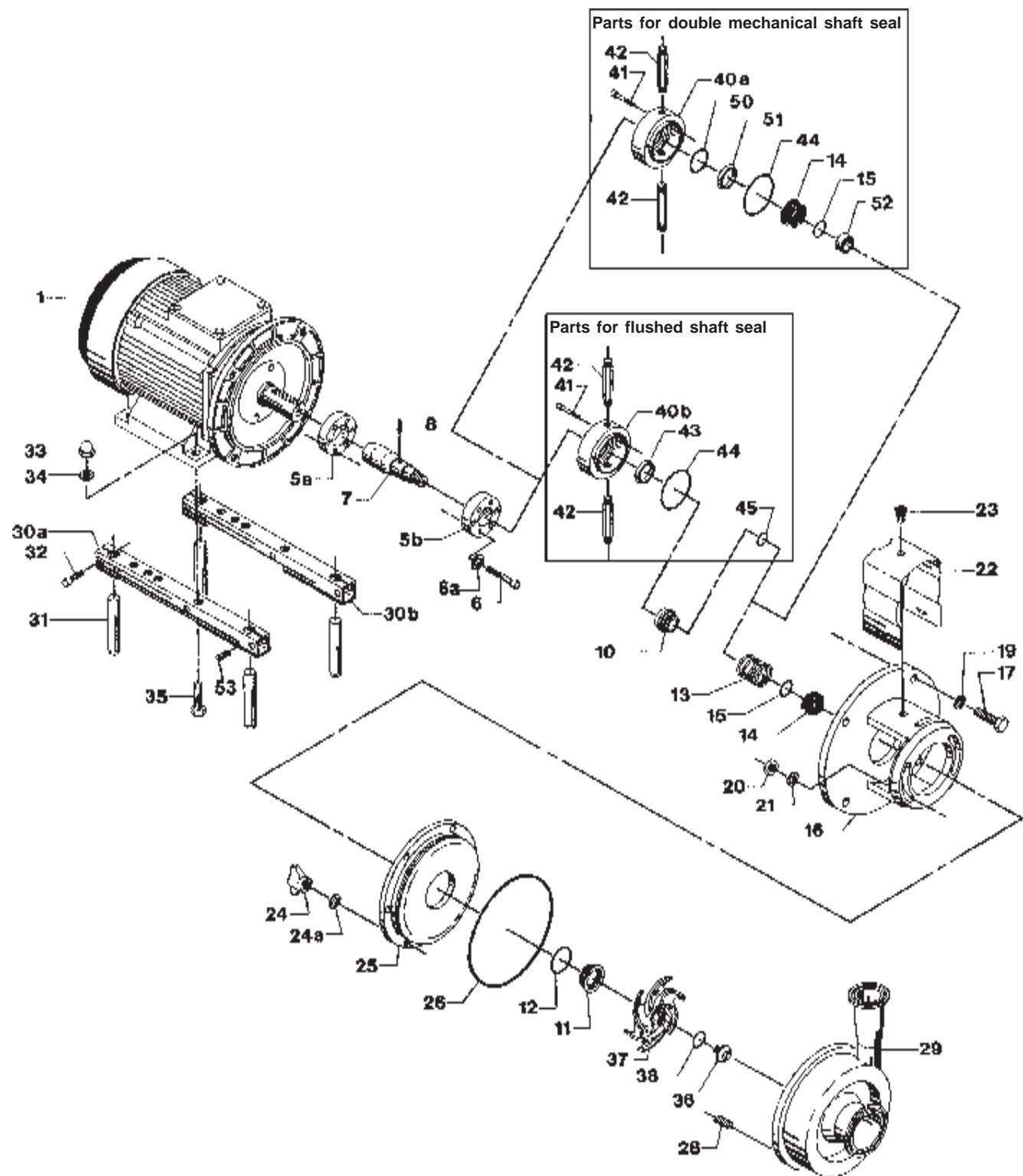
Flushed Shaft Seal



Double Mechanical Shaft Seal







# Centrifugal Pump LKH-50

Pos.	Qty.	Description	7.5-10 Hp Part No.	15-20 Hp Part No.	25-30 Hp Part No.
1	1	Motor			
5a	1	Compression ring with thread .....	9612-13-3606	9612-13-3603	9612-13-3603
5b	1	Compression ring without thread .....	9612-13-3706	9612-13-3703	9612-13-3703
6	6	Screw .....	9611-99-3197	9611-99-3197	9611-99-3198
6a	6	Washer .....	9611-99-3199	9611-99-3199	9611-99-3199
7	1	Stub shaft .....	9612-13-3202	9612-13-3302	9612-13-3302
8	1	Connex pin .....	9611-99-0622	9611-99-0622	9611-99-0622
10	1	Drive ring - single shaft seal .....	9612-13-7701	9612-13-7701	9612-13-7701
	1	Drive ring - flush shaft seal .....	9612-13-9701	9612-13-9701	9612-13-9701
11→▶◆□○◆	1	Stationary seal ring, SC .....	9612-13-7901	9612-13-7901	9612-13-7901
12→▶▶◆□○◆	1	Stationary O-ring, EPDM (standard) .....	9611-99-2149	9611-99-2149	9611-99-2149
	1	Stationary O-ring, FPM .....	9611-99-2150	9611-99-2150	9611-99-2150
	1	Stationary O-ring, NBR .....	9611-99-2151	9611-99-2151	9611-99-2151
	1	Stationary O-ring, PTFE .....	9611-99-2152	9611-99-2152	9611-99-2152
13→▶▶◆□○◆	1	Spring .....	9612-13-7601	9612-13-7601	9612-13-7601
14→▶▶□○	1	Rotating seal ring, Carbon .....	9612-13-6401	9612-13-6401	9612-13-6401
	1	Rotating seal ring, SC .....	9612-13-6402	9612-13-6402	9612-13-6402
◆◆	2	Rotating seal ring, Carbon .....	9612-13-6401	9612-13-6401	9612-13-6401
	2	Rotating seal ring, SC .....	9612-13-6402	9612-13-6402	9612-13-6402
15→▶▶□○	1	Rotating O-ring, EPDM (standard) .....	9611-99-2145	9611-99-2145	9611-99-2145
	1	Rotating O-ring, FPM .....	9611-99-2146	9611-99-2146	9611-99-2146
	1	Rotating O-ring, NBR .....	9611-99-2147	9611-99-2147	9611-99-2147
	1	Rotating O-ring, PTFE .....	9611-99-2148	9611-99-2148	9611-99-2148
◆◆	2	Rotating O-ring, EPDM (standard) .....	9611-99-2145	9611-99-2145	9611-99-2145
	2	Rotating O-ring, FPM .....	9611-99-2146	9611-99-2146	9611-99-2146
	2	Rotating O-ring, NBR .....	9611-99-2147	9611-99-2147	9611-99-2147
	2	Rotating O-ring, PTFE .....	9611-99-2148	9611-99-2148	9611-99-2148
16	1	Adaptor .....	9612-13-5912	9612-13-5913	9612-13-5918
17	4	Adaptor screw .....	180148	180148	180148
19	4	Adaptor spring washer .....	189971	189971	189971
20	2	Adaptor nut .....	9611-99-0353	9611-99-0353	9611-99-0353
21	2	Washer .....	9611-99-2559	9611-99-2559	9611-99-2559
22	1	Safety guard .....	9612-13-1110	9612-13-1108	9612-13-1108
23	1	Safety guard screw .....	9611-99-2544	9611-99-2544	9611-99-2544
24	6	Wingnuts .....	9611-41-6892	9611-41-6892	9611-41-6892
24a	6	Spring washer .....	9611-99-1887	9611-99-1887	9611-99-1887
25	1	Back plate polished .....	9612-13-8418	9612-13-8418	9612-13-8418
26□○◆	1	Joint ring, EPDM (standard) .....	9611-99-2171	9611-99-2171	9611-99-2171
	1	Joint ring, FPM .....	9611-99-2172	9611-99-2172	9611-99-2172
	1	Joint ring, NBR .....	9611-99-2173	9611-99-2173	9611-99-2173
	1	Joint ring, PTFE/SFY .....	9611-99-2174	9611-99-2174	9611-99-2174
28	6	Stud bolt .....	9611-99-2169	9611-99-2169	9611-99-2169
29	1	Pump casing .....	9612-12-9301	9612-12-9301	9612-12-9301
30a-35	1	Leg assembly .....	481663	481665	481669
36	1	Impeller screw .....	9612-13-9603	9612-13-9603	9612-13-9603
37	1	Impeller polished, full .....	9612132015	9612132015	9612132015
38□○◆	1	Impeller O-ring, EPDM (standard) .....	9611-99-2145	9611-99-2145	9611-99-2145
	1	Impeller O-ring, FPM .....	9611-99-2146	9611-99-2146	9611-99-2146
	1	Impeller O-ring, NBR .....	9611-99-2147	9611-99-2147	9611-99-2147
	1	Impeller O-ring, PTFE .....	9611-99-2148	9611-99-2148	9611-99-2148
40a	1	Seal housing - double mechanical .....	9612-13-3902	9612-13-3902	9612-13-3902
40b	1	Seal housing - flushed .....	9612-13-3901	9612-13-3901	9612-13-3901
41	2	Screw for seal housing .....	9611-99-0203	9611-99-0203	9611-99-0203
42	2	Water flush pipe .....	9612-35-8901	9612-35-8901	9612-35-8901
43>○	1	Lip seal .....	31446-0088-2	31446-0088-2	31446-0088-2
44>◆○◆	1	Seal housing O-ring .....	9611-99-2153	9611-99-2153	9611-99-2153
45>○	1	Drive ring O-ring .....	9611-99-2145	9611-99-2145	9611-99-2145
50◆◆	1	O-ring .....	9611-99-2156	9611-99-2156	9611-99-2156
51◆◆	1	Sec. stationary seal ring, SC .....	9612-13-8302	9612-13-8302	9612-13-8302
52◆◆	1	Spacer .....	9612-30-8901	9612-30-8901	9612-30-8901

Parts marked with →, >, ◆ are included in the seal kits.

Parts marked with →, >, ◆, □, ○, ◆ are included in the service kits.

Recommended Spare Parts: Service kits

**Alfa Laval**

Pos.	Qty.	Description	1-40 Hp Part No.
------	------	-------------	---------------------

## Seal Kit for Single Shaft Seal

→	1	C/SC seal kit, EPDM .....	9612-1296-09
→	1	C/SC seal kit, NBR .....	9612-1296-10
→	1	C/SC seal kit, FPM .....	9612-1296-11
→	1	SC/SC seal kit, EPDM .....	9612-1296-05
→	1	SC/SC seal kit, NBR .....	9612-1296-06
→	1	SC/SC seal kit, FPM .....	9612-1296-07

## Seal Kit for Flushed Shaft Seal

>	1	C/SC seal kit, EPDM .....	9612-1296-25
>	1	C/SC seal kit, NBR .....	9612-1296-26
>	1	C/SC seal kit, FPM .....	9612-1296-27
>	1	SC/SC seal kit, EPDM .....	9612-1296-29
>	1	SC/SC seal kit, NBR .....	9612-1296-30
>	1	SC/SC seal kit, FPM .....	9612-1296-31

## Seal Kit for Double Mechanical Shaft Seal

♦	1	C/SC seal kit, EPDM .....	9612-1296-13
♦	1	C/SC seal kit, NBR .....	9612-1296-14
♦	1	C/SC seal kit, FPM .....	9612-1296-15
♦	1	SC/SC seal kit, EPDM .....	9612-1296-17
♦	1	SC/SC seal kit, NBR .....	9612-1296-18
♦	1	SC/SC seal kit, FPM .....	9612-1296-19

Parts marked with →, >, ♦ are included in the seal kits.

## Service Kit for Single Shaft Seal

			C/SIC	SIC/SIC
□	1	Service kit, EPDM .....	9611-92-2130	9611-92-2623
□	1	Service kit, NBR .....	9611-92-2131	9611-92-2624
□	1	Service kit, FPM .....	9611-92-2132	9611-92-2625
□	1	Service kit, PTFE .....	9611-92-2133	9611-92-2626

## Service Kit for Flushed Shaft Seal

			C/SIC	SIC/SIC
○	1	Service kit, EPDM .....	9611-92-2134	9611-92-2631
○	1	Service kit, NBR .....	9611-92-2135	9611-92-2632
○	1	Service kit, FPM .....	9611-92-2136	9611-92-2633
○	1	Service kit, PTFE .....	9611-92-2137	9611-92-2634

## Service Kit for Double Mechanical Shaft Seal

			C/SIC	SIC/SIC
✧	1	Service kit, EPDM .....	9911-92-2234	9611-92-2639
✧	1	Service kit, NBR .....	9611-92-2235	9611-92-2640
✧	1	Service kit, FPM .....	9611-92-2236	9611-92-2641
✧	1	Service kit, PTFE .....	9611-92-2237	9611-92-2642

Parts marked with →, >, ♦, □, ○, ✧ are included in the service kits.

## Conversion Kits

1	Single to flushed shaft seal .....	9611-92-2042
	(The conversion kit contains Pos. 10, 40, 41, 42, 43, 44, 45)	
1	Single to double mechanical shaft seal .....	9611-92-2175
	(The conversion kit contains Pos. 14, 15, 40a, 41, 42, 44, 50, 51, 52)	
1	Flushed to double mechanical shaft seal .....	9611-92-2176
	(The conversion kit contains Pos. 14, 40a, 50, 51, 52)	

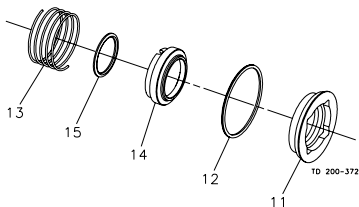
## Accessories

1	Tool complete .....	9612-9036-01
---	---------------------	--------------

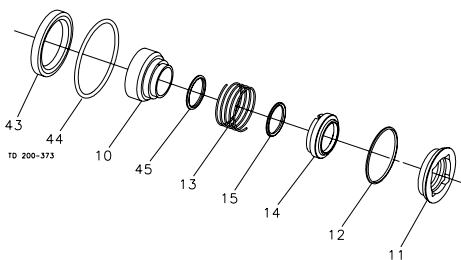
## Recommended Spare Parts: Service kits

Alfa Laval  
8201 104th Street  
Pleasant Prairie, WI 53158-0909  
Telephone: 800-558-2060  
Fax: 262-947-4724

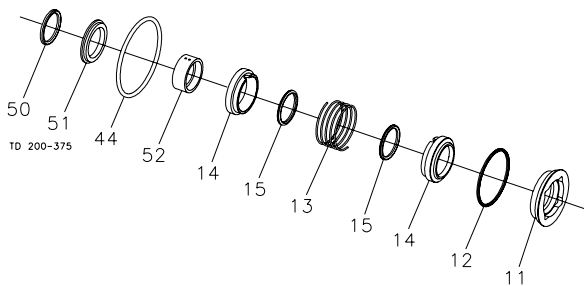
Single Shaft Seal

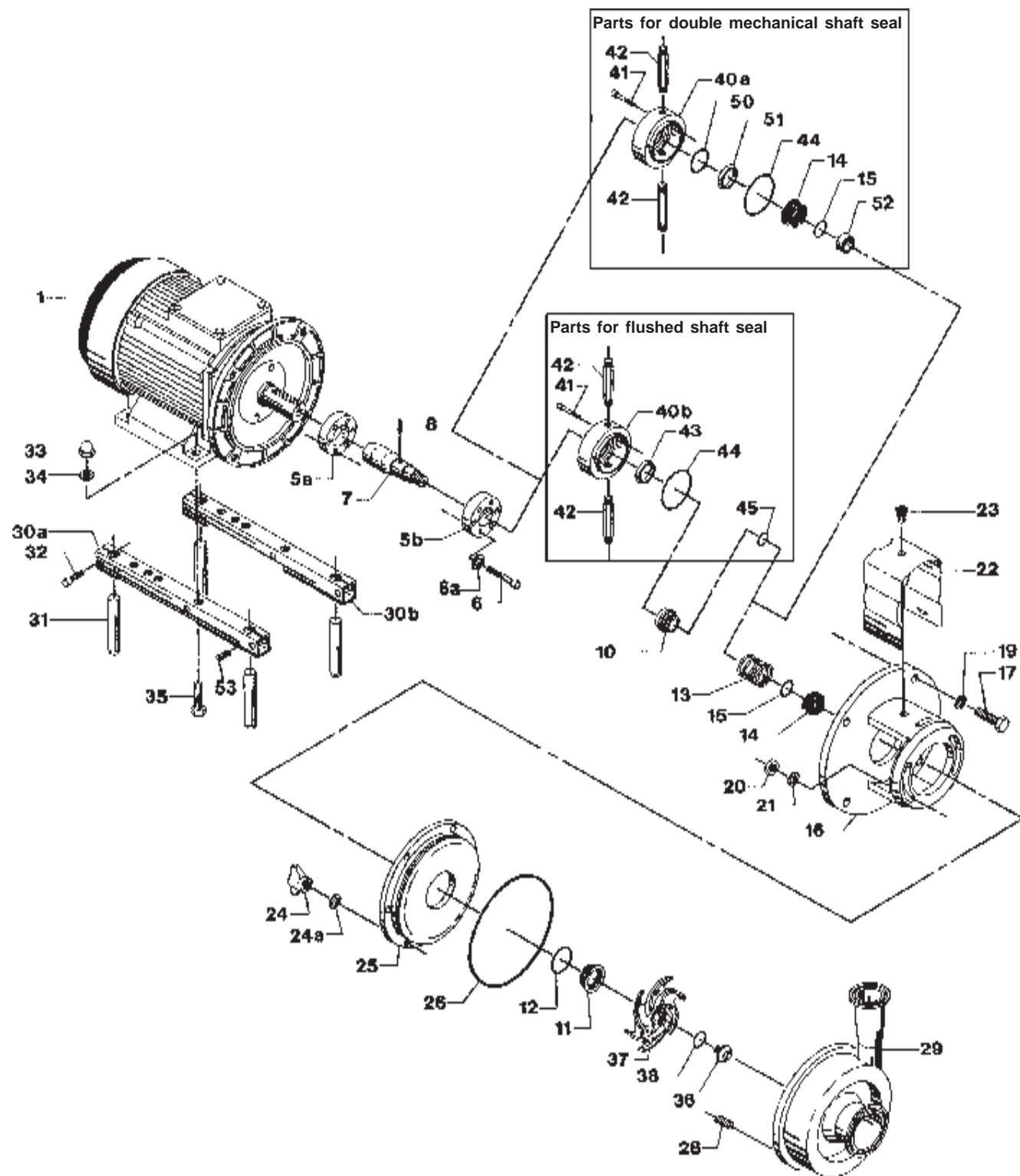


Flushed Shaft Seal



Double Mechanical Shaft Seal





Pos.	Qty.	Description	7.5-10 Hp Part No.	15-20 Hp Part No.	25-30 Hp Part No.	40HP Part No.
1	1	Motor				
5a	1	Compression ring with thread .....	9612-13-3606	9612-13-3603	9612-13-3603	9612-13-3604
5b	1	Compression ring without thread .....	9612-13-3706	9612-13-3703	9612-13-3703	9612-13-3704
6	6	Screw .....	9611-99-3197	9611-99-3197	9611-99-3198	9611-99-3198
6a	6	Washer .....	9611-99-3199	9611-99-3199	9611-99-3199	9611-99-3199
7	1	Stub shaft.....	9612-13-3202	9612-13-3302	9612-13-3302	9612-13-3402
8	1	Connex pin .....	9611-99-0622	9611-99-0622	9611-99-0622	9611-99-0622
10	1	Drive ring - single shaft seal .....	9612-13-7701	9612-13-7701	9612-13-7701	9612-13-7701
	1	Drive ring - flush shaft seal .....	9612-13-9701	9612-13-9701	9612-13-9701	9612-13-9701
11aø◆□○◇	1	Stationary seal ring, SC .....	9612-13-7901	9612-13-7901	9612-13-7901	9612-13-7901
12aø◆□○◇	1	Stationary O-ring, EPDM (standard).....	9611-99-2149	9611-99-2149	9611-99-2149	9611-99-2149
	1	Stationary O-ring, FPM.....	9611-99-2150	9611-99-2150	9611-99-2150	9611-99-2150
	1	Stationary O-ring, NBR.....	9611-99-2151	9611-99-2151	9611-99-2151	9611-99-2151
	1	Stationary O-ring, PTFE.....	9611-99-2152	9611-99-2152	9611-99-2152	9611-99-2152
13aø◆□○◇	1	Spring .....	9612-13-7601	9612-13-7601	9612-13-7601	9612-13-7601
14aø□○	1	Rotating seal ring, Carbon .....	9612-13-6401	9612-13-6401	9612-13-6401	9612-13-6401
	1	Rotating seal ring, SC.....	9612-13-6402	9612-13-6402	9612-13-6402	9612-13-6402
◆◇	2	Rotating seal ring, Carbon .....	9612-13-6401	9612-13-6401	9612-13-6401	9612-13-6401
	2	Rotating seal ring, SC.....	9612-13-6402	9612-13-6402	9612-13-6402	9612-13-6402
15aø□○	1	Rotating O-ring, EPDM (standard).....	9611-99-2145	9611-99-2145	9611-99-2145	9611-99-2145
	1	Rotating O-ring, FPM .....	9611-99-2146	9611-99-2146	9611-99-2146	9611-99-2146
	1	Rotating O-ring, NBR .....	9611-99-2147	9611-99-2147	9611-99-2147	9611-99-2147
	1	Rotating O-ring, PTFE .....	9611-99-2148	9611-99-2148	9611-99-2148	9611-99-2148
◆◇	2	Rotating O-ring, EPDM (standard).....	9611-99-2145	9611-99-2145	9611-99-2145	9611-99-2145
	2	Rotating O-ring, FPM .....	9611-99-2146	9611-99-2146	9611-99-2146	9611-99-2146
	2	Rotating O-ring, NBR .....	9611-99-2147	9611-99-2147	9611-99-2147	9611-99-2147
	2	Rotating O-ring, PTFE .....	9611-99-2148	9611-99-2148	9611-99-2148	9611-99-2148
16	1	Adaptor.....	9612-13-5912	9612-13-5913	9612-13-5918	9612-13-5924
17	4	Adaptor screw .....	180148	180148	180148	180148
19	4	Adaptor spring washer .....	189971	189971	189971	189971
20	2	Adaptor nut.....	9611-99-0353	9611-99-0353	9611-99-0353	9611-99-0353
21	2	Washer .....	9611-99-2559	9611-99-2559	9611-99-2559	9611-99-2559
22	1	Safety guard.....	9612-13-1110	9612-13-1108	9612-13-1108	9612-13-1108
23	1	Safety guard screw .....	9611-99-2544	9611-99-2544	9611-99-2544	9611-99-2544
24	6	Wingnuts.....	9611-41-6892	9611-41-6892	9611-41-6892	9611-41-6892
24a	6	Spring washer .....	9611-99-1887	9611-99-1887	9611-99-1887	9611-99-1887
25	1	Back plate polished .....	9612-13-8418	9612-13-8418	9612-13-8418	9612-13-8418
26□○◇	1	Joint ring, EPDM (standard).....	9611-99-2171	9611-99-2171	9611-99-2171	9611-99-2171
	1	Joint ring, FPM .....	9611-99-2172	9611-99-2172	9611-99-2172	9611-99-2172
	1	Joint ring, NBR .....	9611-99-2173	9611-99-2173	9611-99-2173	9611-99-2173
	1	Joint ring, PTFE/SFY.....	9611-99-2174	9611-99-2174	9611-99-2174	9611-99-2174
28	6	Stud bolt.....	9611-99-2169	9611-99-2169	9611-99-2169	9611-99-2169
29	1	Pump casing 4x4.....	883-41705	883-41705	883-41705	883-41286
		Pump casing 6x4.....	88341286	88341286	88341286	88341286
30a-35	1	Leg assembly.....	481663	481665	481669	9634-05-6195
36	1	Impeller screw.....	9612-13-9603	9612-13-9603	9612-13-9603	9612-13-9603
37	1	Impeller polished, full.....	9612-12-8315	9612-12-8315	9612-12-8315	9612-12-8315
38□○◇	1	Impeller O-ring, EPDM (standard).....	9611-99-2145	9611-99-2145	9611-99-2145	9611-99-2145
	1	Impeller O-ring, FPM.....	9611-99-2146	9611-99-2146	9611-99-2146	9611-99-2146
	1	Impeller O-ring, NBR.....	9611-99-2147	9611-99-2147	9611-99-2147	9611-99-2147
	1	Impeller O-ring, PTFE.....	9611-99-2148	9611-99-2148	9611-99-2148	9611-99-2148
40a	1	Seal housing - double mechanical .....	9612-13-3902	9612-13-3902	9612-13-3902	9612-13-3902
40b	1	Seal housing - flushed.....	9612-13-3901	9612-13-3901	9612-13-3901	9612-13-3901
41	2	Screw for seal housing.....	9611-99-0203	9611-99-0203	9611-99-0203	9611-99-0203
42	2	Water flush pipe .....	9612-35-8901	9612-35-8901	9612-35-8901	9612-35-8901
43ø□	1	Lip seal .....	31446-0088-2	31446-0088-2	31446-0088-2	31446-0088-2
44ø◆□○◇	1	Seal housing O-ring .....	9611-99-2153	9611-99-2153	9611-99-2153	9611-99-2153
45ø□	1	Drive ring O-ring .....	9611-99-2145	9611-99-2145	9611-99-2145	9611-99-2145
50◆◇	1	O-ring.....	9611-99-2156	9611-99-2156	9611-99-2156	9611-99-2156
51◆◇	1	Sec. stationary seal ring, SC.....	9612-13-8302	9612-13-8302	9612-13-8302	9612-13-8302
52◆◇	1	Spacer.....	9612-30-8901	9612-30-8901	9612-30-8901	9612-30-8901

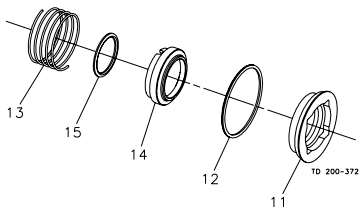
Parts marked with ø, ◇, ◆ are included in the seal kits.

Parts marked with ø, ◇, ◆, □, ○, ◇ are included in the service kits.

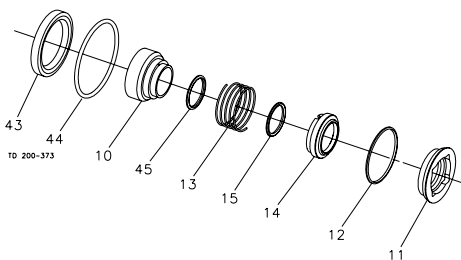
Recommended Spare Parts: Service kits

**Alfa Laval**

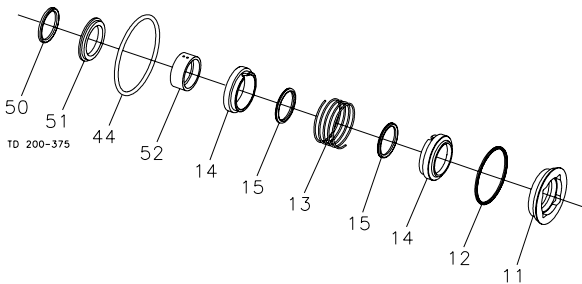
Single Shaft Seal



Flushed Shaft Seal



Double Mechanical Shaft Seal



Pos.	Qty.	Description	1-40 Hp Part No.
<b>Seal Kit for Single Shaft Seal</b>			
→	1	C/SC seal kit, EPDM .....	9612-1296-09
→	1	C/SC seal kit, NBR .....	9612-1296-10
→	1	C/SC seal kit, FPM .....	9612-1296-11
→	1	SC/SC seal kit, EPDM .....	9612-1296-05
→	1	SC/SC seal kit, NBR .....	9612-1296-06
→	1	SC/SC seal kit, FPM .....	9612-1296-07

<b>Seal Kit for Flushed Shaft Seal</b>			
➤	1	C/SC seal kit, EPDM .....	9612-1296-25
➤	1	C/SC seal kit, NBR .....	9612-1296-26
➤	1	C/SC seal kit, FPM .....	9612-1296-27
➤	1	SC/SC seal kit, EPDM .....	9612-1296-29
➤	1	SC/SC seal kit, NBR .....	9612-1296-30
➤	1	SC/SC seal kit, FPM .....	9612-1296-31

<b>Seal Kit for Double Mechanical Shaft Seal</b>			
◆	1	C/SC seal kit, EPDM .....	9612-1296-13
◆	1	C/SC seal kit, NBR .....	9612-1296-14
◆	1	C/SC seal kit, FPM .....	9612-1296-15
◆	1	SC/SC seal kit, EPDM .....	9612-1296-17
◆	1	SC/SC seal kit, NBR .....	9612-1296-18
◆	1	SC/SC seal kit, FPM .....	9612-1296-19

Parts marked with →, ➤, ◆ are included in the seal kits.

Service Kit for Single Shaft Seal			C/SIC	SIC/SIC
☐	1	Service kit, EPDM .....	9611-92-2130	9611-92-2623
☐	1	Service kit, NBR .....	9611-92-2131	9611-92-2624
☐	1	Service kit, FPM .....	9611-92-2132	9611-92-2625
☐	1	Service kit, PTFE .....	9611-92-2133	9611-92-2626

Service Kit for Flushed Shaft Seal			C/SIC	SIC/SIC
○	1	Service kit, EPDM .....	9611-92-2134	9611-92-2631
○	1	Service kit, NBR .....	9611-92-2135	9611-92-2632
○	1	Service kit, FPM .....	9611-92-2136	9611-92-2633
○	1	Service kit, PTFE .....	9611-92-2137	9611-92-2634

Service Kit for Double Mechanical Shaft Seal			C/SIC	SIC/SIC
✧	1	Service kit, EPDM .....	9911-92-2234	9611-92-2639
✧	1	Service kit, NBR .....	9611-92-2235	9611-92-2640
✧	1	Service kit, FPM .....	9611-92-2236	9611-92-2641
✧	1	Sevice kit, PTFE .....	9611-92-2237	9611-92-2642

Parts marked with →, ➤, ◆, □, ○, ✧ are included in the service kits.

<b>Conversion Kits</b>		
1	Single to flushed shaft seal .....	9611-92-2042
	(The conversion kit contains Pos. 10, 40, 41, 42, 43, 44, 45)	
1	Single to double mechanical shaft seal .....	9611-92-2175
	(The conversion kit contains Pos. 14, 15, 40a, 41, 42, 44, 50, 51, 52)	
1	Flushed to double mechanical shaft seal .....	9611-92-2176
	(The conversion kit contains Pos. 14, 40a, 50, 51, 52)	

<b>Accessories</b>		
1	Tool complete .....	9612-9036-01

## Recommended Spare Parts: Service kits

Alfa Laval  
8201 104th Street  
Pleasant Prairie, WI 53158-0909  
Telephone: 800-558-2060  
Fax: 262-947-4724