

## Tube Hangers

### Tube Uni-Hinge Block Hangers

#### Applications:

- clean rooms and mechanical areas; not limited to: biotech, pharmaceutical, food processing.
- low flow and low pressure systems with moderate vibration: WFI, SIP, CIP, process, utility and instrument lines.

#### Sizes:

- support range: 1/2" - 4", optional 6" - contact Dixon Sanitary 800.789.1718

#### Materials:

- silicone insert - 80 durometer; color: blue
- hardware - 304 & 316 stainless steel

#### Features:

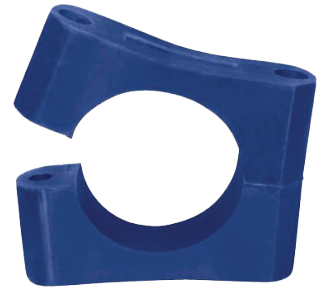
- insulation envelope: reduced OD allows hanger to be buried under the insulation jacket.
- silicone inserts are one piece
- there are no exposed threads or openings in hardware plates

#### Specification:

- intermittent temperatures from -40°F to 320°F (-40°C to 160°)

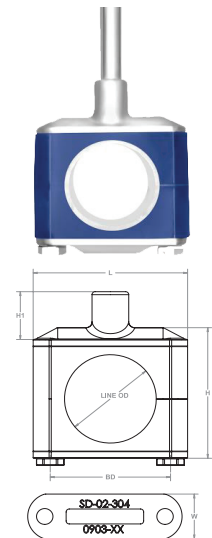
#### Approvals:

- all plates polished, bolts are cleaned and nuts are lubricated with FDA approved product
- hanger threads match MSS SP-69 rod OD requirements



#### Hang Plate Block Hanger - B24-HP

Tube OD	BD	H	H1	L	Line OD	W	Thread	Part Number
1/2"	1.44	1.69	0.60	1.93	0.50	0.75	3/8"-16	<b>B24-HP-G050</b>
3/4"	1.44	1.69	0.60	1.93	0.75	0.75	3/8"-16	<b>B24-HP-G075</b>
1"	1.44	1.69	0.60	1.93	1.00	0.75	3/8"-16	<b>B24-HP-G100</b>
1 1/2"	1.94	2.19	0.60	2.49	1.50	0.75	3/8"-16	<b>B24-HP-G150</b>
2"	2.44	2.69	0.60	2.99	2.00	0.88	1/2"-13	<b>B24-HP-G200</b>
2 1/2"	2.81	3.22	1.21	3.36	2.50	0.88	1/2"-13	<b>B24-HP-G250</b>
3"	3.44	3.97	1.21	3.99	3.00	0.88	1/2"-13	<b>B24-HP-G300</b>
4"	4.55	4.85	1.39	5.10	4.00	1.00	5/8"-11	<b>B24-HP-G400</b>



#### Weld Plate Block Hanger - B24-WP

Tube OD	BD	CL	H	L	Line OD	W	Part Number
1/2"	1.44	0.79	1.73	1.93	0.50	0.75	<b>B24-WP-G050</b>
3/4"	1.44	0.79	1.73	1.93	0.75	0.75	<b>B24-WP-G075</b>
1"	1.44	0.79	1.73	1.93	1.00	0.75	<b>B24-WP-G100</b>
1 1/2"	1.94	1.03	2.23	2.49	1.50	0.75	<b>B24-WP-G150</b>
2"	2.44	1.31	2.75	2.99	2.00	0.88	<b>B24-WP-G200</b>
2 1/2"	2.81	1.55	3.25	3.36	2.50	0.88	<b>B24-WP-G250</b>
3"	3.44	1.93	3.68	3.99	3.00	0.88	<b>B24-WP-G300</b>
4"	4.55	2.39	4.87	5.10	4.00	1.00	<b>B24-WP-G400</b>

