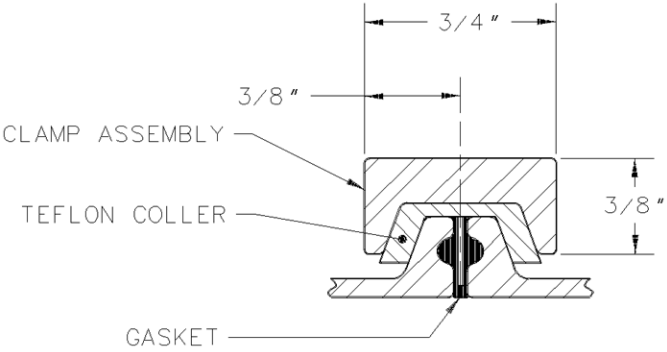
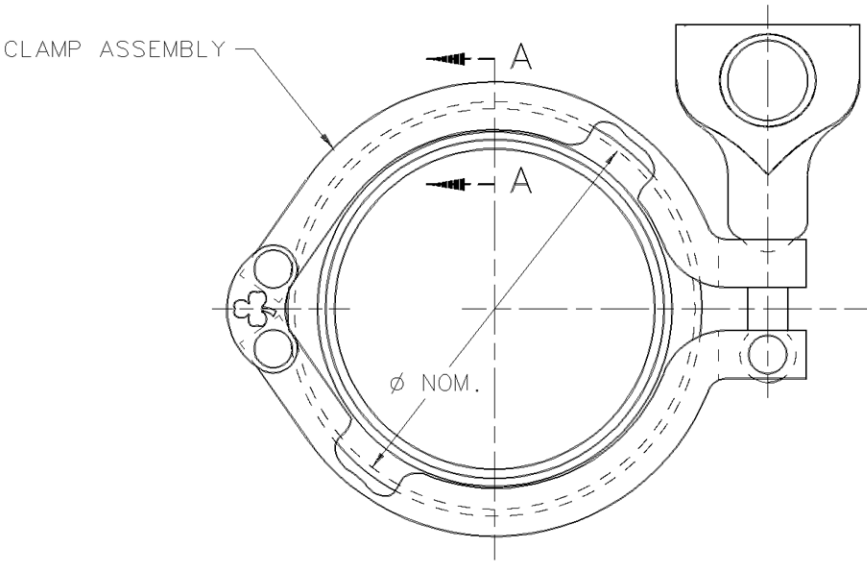


This drawing is loaned without other consideration than the agreement and condition that it is not to be reproduced, copied or otherwise disposed of, directly or indirectly, and is not to be used in whole or in part to assist in making or to furnish any information for the making of drawings, prints, apparatus or parts thereof. The acceptance of this drawing will be construed as an acceptance of the fore-going conditions and as an admission of the exclusive ownership of Alfa Laval Inc., in and to the drawing.

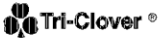
Alfa Laval Inc., Kenosha, Wisconsin

PART NUMBER	Ø NOM.	CLAMP ASSEMBLY	TEFLON COLLAR	GASKET
A12MPS-1 1/2-S	1.984	12MPS-1 1/2-01-S	12MPS-1 1/2-02	A40MP-GR-1 1/2
A12MPS-2-S	2.516	H13MHM-1 1/2-S	12MPS-2-02	A40MP-GR-2
A12MPS-2 1/2-S	3.047	H13MHM-2-S	12MPS-2 1/2-02	A40MP-GR-2 1/2
A12MPS-3-S	3.579	H13MHM-2 1/2-S	12MPS-3-02	A40MP-GR-3
A12MPS-4-S	4.682	12MPS-4-01-S	12MPS-4-02	A40MP-GR-4



SECTION A-A

Alfa Laval



P.O. Box 1413, Kenosha, Wisconsin 53141-1413

					MAT'L SEE ABOVE				DRWN BY	DATE	CLAMP ASSEMBLY SWIVEL JOINT ADAPTER	
					SPEC				CHKD BY	DATE		
									APPD BY	DATE		
					FINISH		DO NOT SCALE DRAWING	DWG SIZE B	SCALE N.T.S.		DRAWING NO. A12MPS-SIZE-S	
LET	REVISION			BY	DATE	APD						