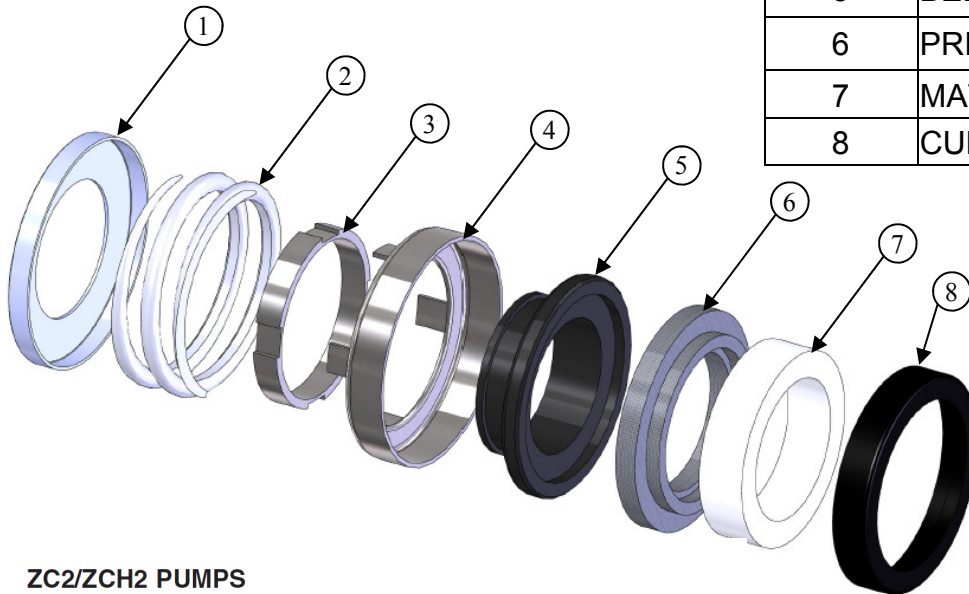


TYPE 21 SEAL EXPLODED VIEW



DETAIL NO.	PART NAME
1	SPRING HOLDER
2	SPRING
3	DRIVE BAND
4	RETAINER
5	BELLOWS
6	PRIMARY RING
7	MATING RING
8	CUP

ZC2/ZCH2 PUMPS

1 1/2x1 1/4, 2x1 1/2, 2 1/2x2, 3x2 1/2, 4x3; KC2 1 1/2x1 1/4, 2x1 1/2

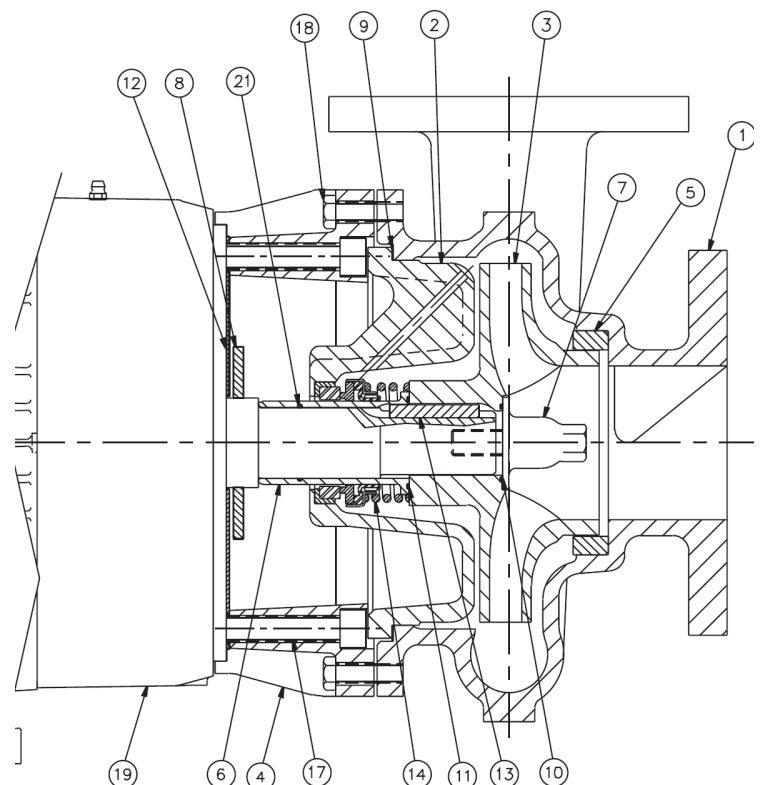
AMPCO PUMPS COMPANY PARTS BREAKDOWN

DETAIL NO.	REQ. NO.	PART NAME
22 ^{1,3}	1	WEAR RING (COVER)
21 ²	1	O-RING (SHAFT/SLEEVE)
20 ¹	2	PIPE PLUG (OPTIONAL)
19	1	MOTOR
18	8	CAP SCREW (CASING/ADAPTER)
17	4	CAP SCREW (MOTOR/ADAPTER)
16 ¹	2	DRIVE SCREW
15 ¹	1	NAME PLATE
14	1	MECHANICAL SEAL
13	1	IMPELLER KEY
12	1	SPLASH PLATE
11	1	O-RING (SLEEVE/IMPELLER)
10	1	GASKET or O-RING (IMPELLER SCREW)
9	1	GASKET (CASING/COVER)
8	1	SLINGER
7	1	IMPELLER SCREW
6	1	SHAFT SLEEVE
5	1	WEAR RING (SUCTION)
4	1	ADAPTER
3	1	IMPELLER
2	1	COVER
1	1	CASING

¹NOT SHOWN

²ZCH2 ONLY

³ZC2/ZCH2 4x3 ONLY



Distributed by:

NELSON JAMESON
INC.

800-826-8302 nelsonjameson.com

NOTE: Please be sure to always include pump type, size, and serial number with any reference to above numbers and names.