

### SPLASH MOUNTED FAUCETS



7-PS-60



7-PS-68



7-PS-50



7-PS-54



7-PS-67

### DECK MOUNTED FAUCET



7-PS-20



7-PS-20-NF  
Faucet omitted

### SINGLE HOLE PUNCH

Faucet omitted



7-PS-71

### DOUBLE HOLE PUNCH

Faucet omitted



7-PS-70

## LARGE SINK BOWLS

Features  
Large Size  
Sink Bowl  
16" x 20" x 8"



7-PS-45

Features  
Large Size  
Sink Bowl  
16" x 14" x 8"



7-PS-49

Item #: \_\_\_\_\_ Qty #: \_\_\_\_\_

Model #: \_\_\_\_\_

Project #: \_\_\_\_\_

### FEATURES:

One piece **Deep Drawn** sink bowl design.

Sink bowl size is 10" x 14" x 5".

**7-PS-45** sink bowl size is 16" x 20" x 8".

**7-PS-49** sink bowl size is 16" x 14" x 8".

All sink bowls have a large liberal radii with a minimum dimension of 2" and are rectangular in design for increased capacity.

Stainless steel 3 1/2" basket drain with 1-1/2" IPS.

### Additional Features:

**7-PS-20** 4" O.C. deck mounted centerset faucet.

**7-PS-20-NF** Deck mounted faucet omitted. Two 4" O.C. holes.

**7-PS-45** 4" O.C. splash mounted faucet and 2 Stainless Steel Support Brackets. (Hardware Included).

**7-PS-49** 4" O.C. splash mounted faucet and 2 Stainless Steel Support Brackets. (Hardware Included).

**7-PS-50** 4" O.C. splash mounted gooseneck faucet. Lever operated drain and built-in overflow with plastic overflow tube and spring clamps. 1-1/2" P-Trap.

**7-PS-54** 4" O.C. splash mounted gooseneck faucet. 1-1/2" P-Trap.

**7-PS-60** 4" O.C. splash mounted gooseneck faucet.

**7-PS-67** 4" O.C. splash mounted gooseneck faucet and lever operated drain.

**7-PS-68** 4" O.C. splash mounted gooseneck faucet with Wrist Handles.

**7-PS-70** Splash mounted faucet omitted. Two 4" O.C. holes.

**7-PS-71** Splash mounted faucet omitted. Single center hole.

### CONSTRUCTION:

All TIG welded.

Welded areas blended to match adjacent surfaces and to a satin finish.

Die formed Countertop Edge with a No-Drip offset.

One sheet of stainless steel - No Seams.

### MATERIAL:

Heavy gauge type 304 series stainless steel.

Wall mounting bracket is Galvanized and of offset design.

All fittings are brass / chrome plated unless otherwise indicated.

### MECHANICAL:

Faucet supply is 1/2" IPS male thread hot and cold.

### WARNING:

Equipment that includes a faucet may expose you to chemicals, including lead, that are known to the State of California to cause cancer or birth defects or other reproductive harm. For more Info., visit [www.p65warnings.ca.gov](http://www.p65warnings.ca.gov).

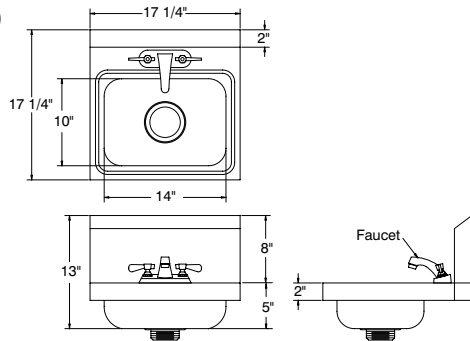
# DIMENSIONS and SPECIFICATIONS

TOL Overall:  $\pm .500''$  Interior:  $\pm .250''$

FITTINGS SUPPLIED AS SHOWN

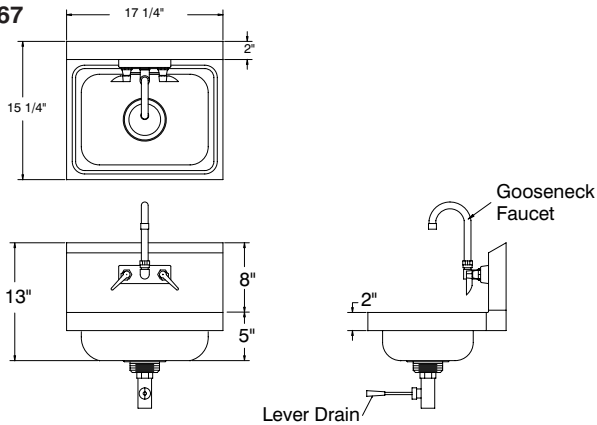
ALL DIMENSIONS ARE TYPICAL

## 7-PS-20



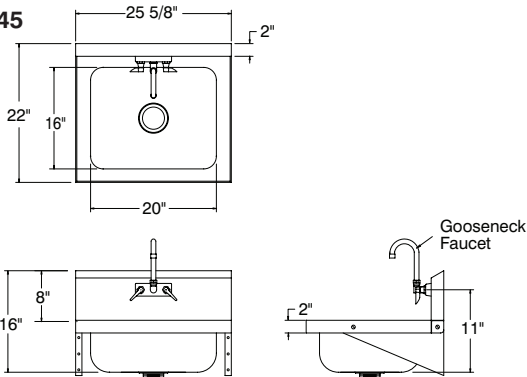
15 lbs.

## 7-PS-67



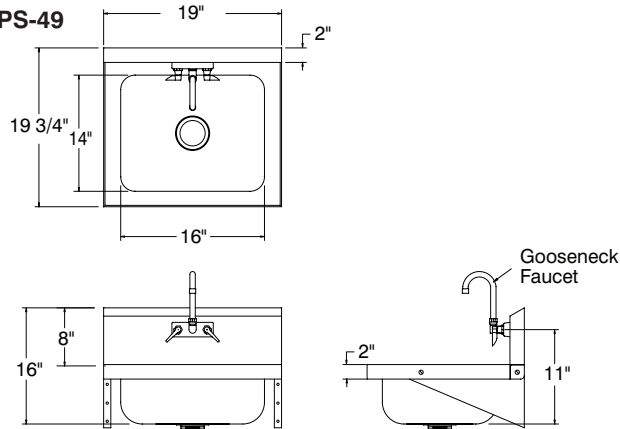
15 lbs.

## 7-PS-45



31 lbs.

## 7-PS-49



31 lbs.

## TOP VIEW FOR:

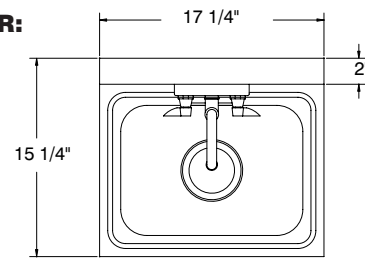
7-PS-50

7-PS-54

7-PS-60

7-PS-68

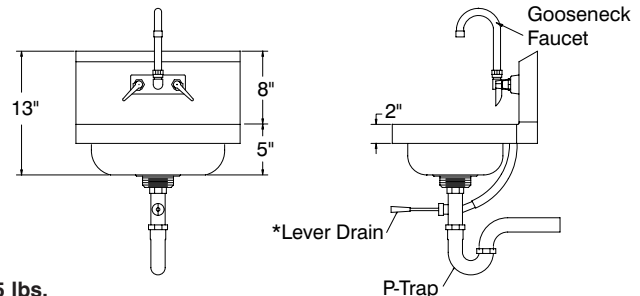
7-PS-70



Sink Bowl 10" x 14" x 5"

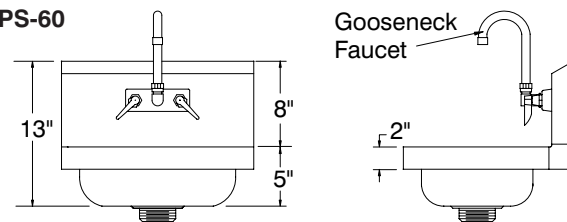
7-PS-50 & 7-PS-54\*

NOTE: \*7-PS-54 Hand Sink Excludes Lever Drain and Overflow



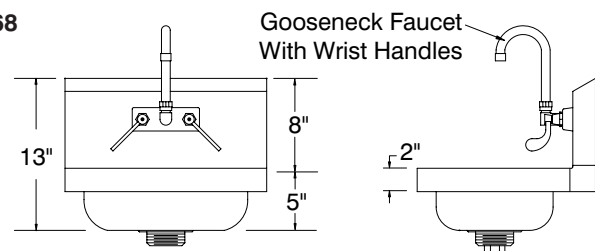
15 lbs.

## 7-PS-60



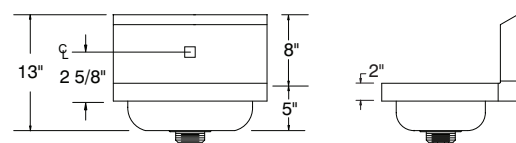
13 lbs.

## 7-PS-68

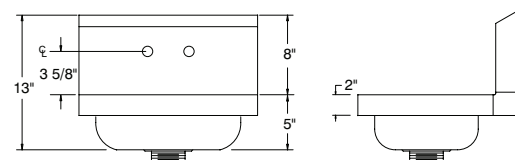


13 lbs.

## 7-PS-71



## 7-PS-70



12 lbs.



REF-B

325 Wireless Boulevard, Hauppauge, NY 11788

ADVANCE TABCO is constantly engaged in a program of improving our products. Therefore, we reserve the right to change specifications without prior notice.

© ADVANCE TABCO, AUGUST 2019