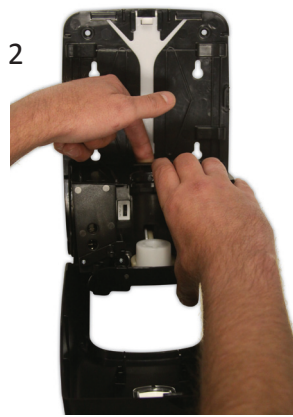


VersaClenz Dispenser Installation



1
Open front cover using one of the provided keys.



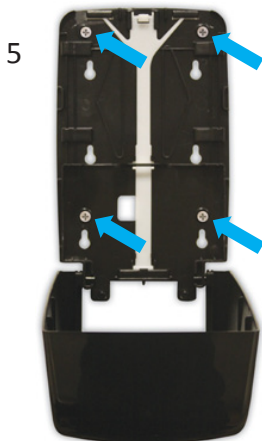
2
Push down on retention clip.



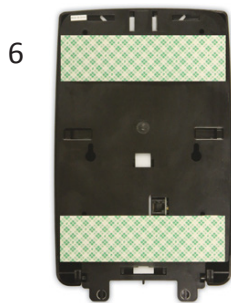
3
Remove control box.



4
Use back plate as mounting hole template.



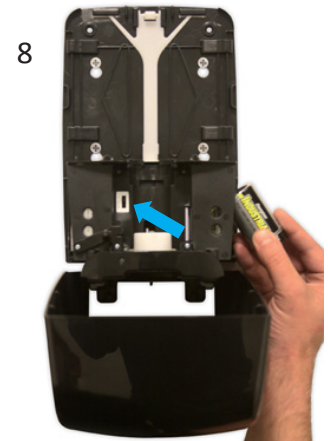
5
To ensure proper installation, use the 4 mounting screws in holes shown.



6
The double-sided tape should be used in addition to mounting screws, or if drilling holes is not an option.



7
Replace control box.



8
Install the 4, D-cell batteries provided. Set variable output switch.



9
Install cartridge, pressing it firmly against back of dispenser.



10
Cartridge is now correctly installed.



11
Close cover.



12
Attach catch tray and now your dispenser is correctly installed and ready for use.