

DEPTIL ACID SAN Test Kit

NJT001
red caps

KIT COMPONENTS:

SH6200-B	Sodium Hydroxide 0.1N, 60 mL
PH1605-A	Phenolphthalein Indicator, 30 mL
SY-2010-P	Syringe, 10 mL
VL-0525-V	Vial, 5-25 mL

SAFETY TIPS:



Wear
Gloves



Use Eye
Protection



Read
SDS

TESTING TIPS:



Collect
Accurate
Sample



Hold
Bottles
Vertically



Ensure
Proper
Lighting

INTERFERENCES: Turbid or highly colored samples may mask the color change at the endpoint.

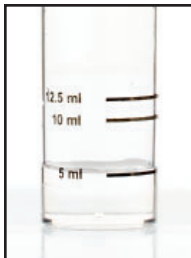
ATTENTION: As necessary, calibrate this kit against a known standard made with plant / make-up water. Be sure to collect a representative sample.

1 Rinse vial three times with sample to be tested. **Fill vial to 5 mL.**

2 Add 3 drops of **Phenolphthalein Indicator** (PH1605) and swirl to mix. The sample should remain colorless.



STEP 1



STEP 2

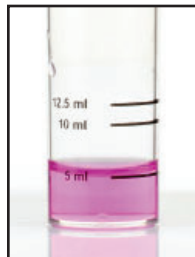
3 Add **Sodium Hydroxide 0.1N** (SH6200) one drop at a time while swirling. Count the number of drops until the sample color changes from colorless to pink.

drops x 0.0073 = oz/gal of Deptil ACID SAN

drops x 11 = ppm of Dodecylbenzenesulfonic acid

Target Range

25 to 31 drops or 0.18 to 0.22 oz/gal as Deptil Acid San
or 275 to 341 ppm Dodecylbenzenesulfonic acid



STEP 3