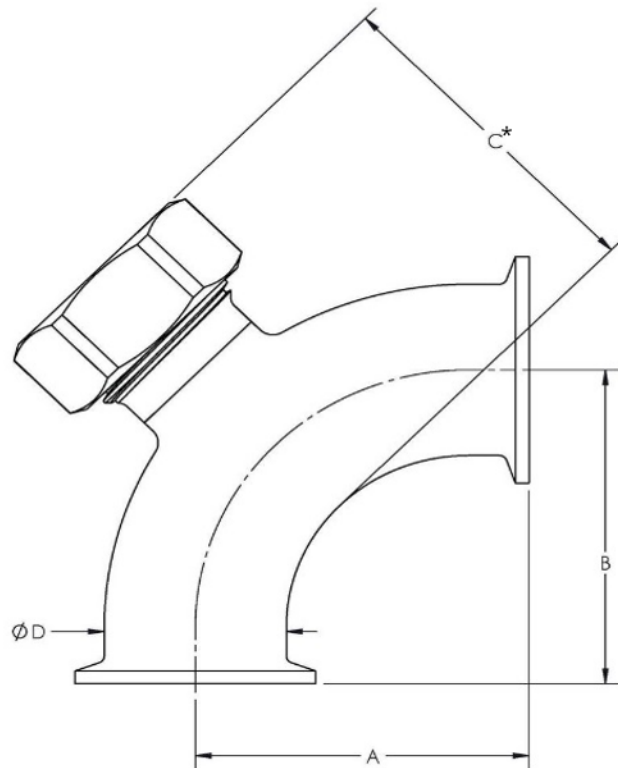


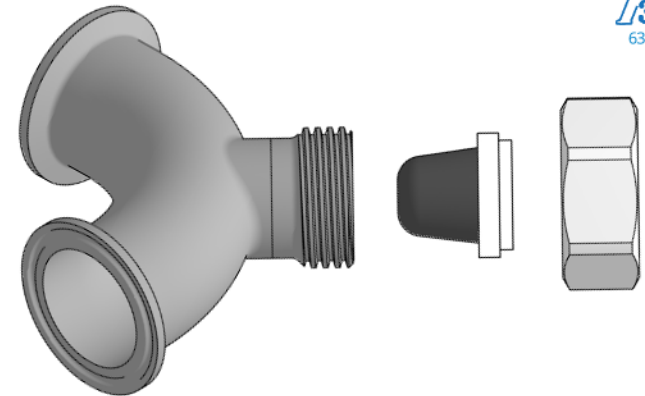
TECHNICAL SPECIFICATIONS

TruStream7 Sanitary Tri-Clamp Inspection Elbows (with Hex Nut and Dust Cover)

Material: 316L Stainless Steel / EN 1.4404
Roughness (Internal): $Ra \leq 20 \mu\text{in.} / Ra 0.5 \mu\text{m.}$



*Measurement is with septum in place



Component	Part Number	Flange (OD)	Diameter (OD)	Diameter (ID)	A / B	C*
TruStream7	213019	1.984" / 50.5mm	1.0" / 25.4mm	0.870" / 22.1mm	2.00" / 50.8mm	2.4" / 61.0mm
	213025	1.984" / 50.5mm	1.5" / 38.1mm	1.370" / 34.8mm	2.75" / 69.9mm	2.9" / 73.7mm
	213029	2.516" / 64.0mm	2.0" / 50.8mm	1.870" / 47.5mm	3.50" / 88.9mm	3.4" / 86.4mm
	213033	3.047" / 77.5mm	2.5" / 63.5mm	2.370" / 60.2mm	4.25" / 108.0mm	3.9" / 99.1mm
	213037	3.579" / 91.0mm	3.0" / 76.2mm	2.870" / 72.9mm	5.00" / 127.0mm	4.4" / 111.8mm
	213045**	4.682" / 119.0mm	4.0" / 101.6mm	3.834" / 97.4mm	6.63" / 168.4mm	5.4" / 137.2mm

**Non-Stock Item

Component Packaging	Part Number	Length	Width	Height	Shipping Weight
TruStream7	213019	4.75" / 120.7mm	4.25" / 108.0mm	2.25" / 57.2mm	1lb. / 0.5 kg
	213025	9.5" / 241.3mm	9.25" / 235.0mm	2.5" / 63.5mm	2 lbs. / 0.9 kg
	213029	TBD	TBD	TBD	TBD
	213033	TBD	TBD	TBD	TBD
	213037	TBD	TBD	TBD	TBD
	213045**	TBD	TBD	TBD	TBD

**Non-Stock Item



651-501-2337 • sales@qualitru.com • QualiTru.com