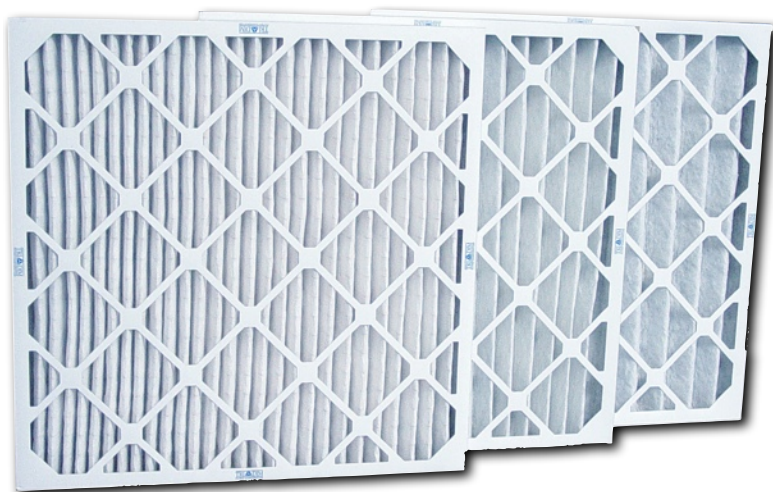


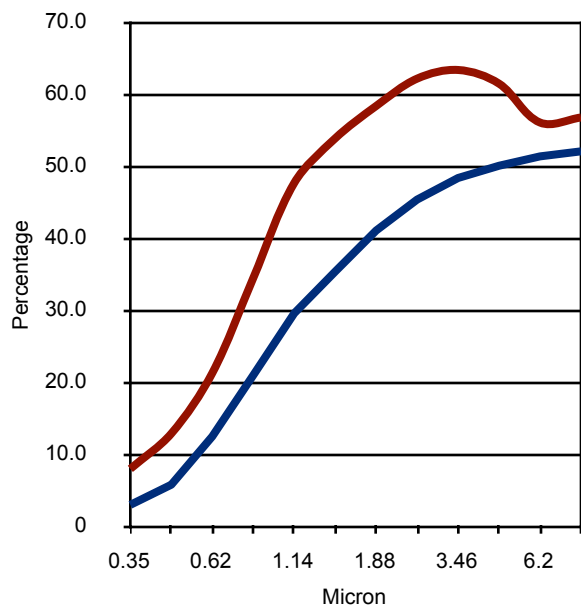
TECHNICAL DATA



Tri-Dim offers a complete line of medium efficiency extended surface pleated air filters. TRI-PLEAT ES40 Series is offered in three capacity levels – (see picture left) – high capacity, standard capacity and budget capacity. The TRI-PLEAT ES40 Series filters offer superior strength as a result of a rigid beverage board die-cut frame and an expanded metal backing.

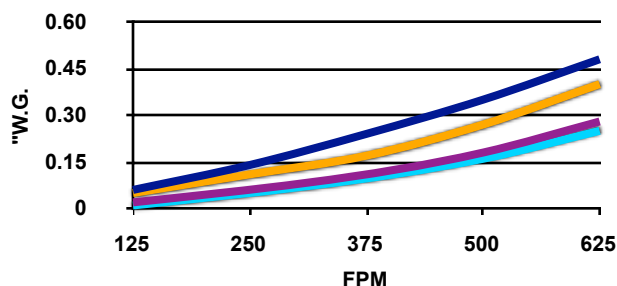
Minimum Efficiency by Particle Size

(per ASHRAE Standard 52.2)



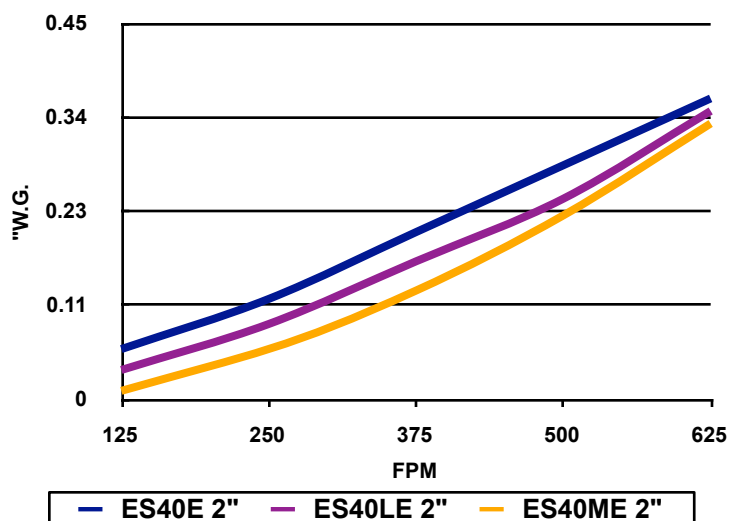
— ES40L — ES40M

Initial Resistance - 1" and 4"



— ES40L 1" — ES40L 4" — ES40M 1" — ES40M 4"

Initial Resistance - Two Inch Depth



— ES40E 2" — ES40LE 2" — ES40ME 2"

SPECIFICATIONS

MEDIA:

100% Synthetic

FRAME:

Die Cut Beverage Board - 100% Reclaimed Fiber

RECOMMENDED FINAL RESISTANCE:

1.0" W.G.

MEETS ANSI/UL-900 REQUIREMENTS

EFFICIENCY: (per ASHRAE 52.2)

ES40E = MERV 7

ES40LE = MERV 7

ES40ME = MERV 7

TRI-PLEAT ES40 Series Technical Data

| Standard Size W x H x D | Actual Size (Inches) | | | Air Flow Capacity (CFM) | | | Gross Media Area (Sq. Ft.) | | |
|----------------------------|-------------------------|--------|-------|----------------------------|---------|---------|-------------------------------|--------|--------|
| | W | H | D | 300 FPM | 500 FPM | 625 FPM | ES40E | ES40LE | ES40ME |
| 10 X 20 X 1 | 9-1/2 | 19-1/2 | 3/4 | 425 | 700 | - | - | 2.2 | 3.2 |
| 12 X 12 X 1 | 11-3/8 | 11-3/8 | 3/4 | 300 | 500 | - | - | 1.6 | 2.3 |
| 12 X 20 X 1 | 11-1/2 | 19-1/2 | 3/4 | 500 | 850 | - | - | 2.7 | 3.8 |
| 12 X 24 X 1 | 11-3/8 | 23-3/8 | 3/4 | 600 | 1000 | - | - | 3.2 | 4.6 |
| 14 X 20 X 1 | 13-1/2 | 19-1/2 | 3/4 | 600 | 975 | - | - | 3.1 | 4.5 |
| 14 X 24 X 1 | 13-1/2 | 23-1/2 | 3/4 | 700 | 1175 | - | - | 3.7 | 5.4 |
| 14 X 25 X 1 | 13-1/2 | 24-1/2 | 3/4 | 750 | 1225 | - | - | 3.9 | 5.6 |
| 15 X 20 X 1 | 14-1/2 | 19-1/2 | 3/4 | 625 | 1050 | - | - | 3.3 | 4.8 |
| 16 X 16 X 1 | 15-5/8 | 15-5/8 | 3/4 | 550 | 900 | - | - | 2.8 | 4.1 |
| 16 X 20 X 1 | 15-1/2 | 19-1/2 | 3/4 | 675 | 1125 | - | - | 3.6 | 5.1 |
| 16 X 24 X 1 | 15-1/2 | 23-1/2 | 3/4 | 800 | 1350 | - | - | 4.3 | 6.1 |
| 16 X 25 X 1 | 15-1/2 | 24-1/2 | 3/4 | 850 | 1400 | - | - | 4.4 | 6.4 |
| 16 X 30 X 1* | 15-3/4 | 29-5/8 | 3/4 | 1000 | 1675 | - | - | 5.3 | 7.7 |
| 18 X 20 X 1 | 17-1/2 | 19-1/2 | 3/4 | 750 | 1250 | - | - | 4.0 | 5.8 |
| 18 X 24 X 1 | 17-1/2 | 23-1/2 | 3/4 | 900 | 1500 | - | - | 4.8 | 6.9 |
| 18 X 25 X 1 | 17-1/2 | 24-1/2 | 3/4 | 950 | 1575 | - | - | 5.0 | 7.2 |
| 20 X 20 X 1 | 19-1/2 | 19-1/2 | 3/4 | 850 | 1400 | - | - | 4.4 | 6.4 |
| 20 X 24 X 1 | 19-1/2 | 23-1/2 | 3/4 | 1000 | 1675 | - | - | 5.3 | 7.7 |
| 20 X 25 X 1 | 19-1/2 | 24-1/2 | 3/4 | 1050 | 1750 | - | - | 5.6 | 8.0 |
| 20 X 30 X 1* | 19-5/8 | 29-5/8 | 3/4 | 1250 | 2100 | - | - | 6.7 | 9.6 |
| 24 X 24 X 1 | 23-3/8 | 23-3/8 | 3/4 | 1200 | 2000 | - | - | 6.4 | 9.2 |
| 24 X 30 X 1* | 23-3/4 | 29-3/4 | 3/4 | 1500 | 2500 | - | - | 8.0 | 11.5 |
| 25 X 25 X 1 | 24-1/2 | 24-1/2 | 3/4 | 1325 | 2175 | - | - | 6.9 | 10.0 |
| 10 X 20 X 2 | 9-1/2 | 19-1/2 | 1-3/4 | 425 | 700 | 875 | 2.9 | 4.4 | 6.7 |
| 12 X 12 X 2 | 11-3/8 | 11-3/8 | 1-3/4 | 300 | 500 | 625 | 2.1 | 3.2 | 4.8 |
| 12 X 20 X 2 | 11-1/2 | 19-1/2 | 1-3/4 | 500 | 850 | 1050 | - | 5.3 | 8.0 |
| 12 X 24 X 2 | 11-3/8 | 23-3/8 | 1-3/4 | 600 | 1000 | 1250 | 4.2 | 6.4 | 9.6 |
| 14 X 20 X 2 | 13-1/2 | 19-1/2 | 1-3/4 | 600 | 975 | 1225 | 4.0 | 6.2 | 9.3 |
| 14 X 25 X 2 | 13-1/2 | 24-1/2 | 1-3/4 | 750 | 1225 | 1525 | 5.1 | 7.8 | 11.7 |
| 15 X 20 X 2 | 14-1/2 | 19-1/2 | 1-3/4 | 625 | 1050 | 1325 | 4.4 | 6.7 | 10.0 |
| 15 X 25 X 2 | 14-1/2 | 24-1/2 | 1-3/4 | 800 | 1325 | 1650 | - | 8.3 | 12.5 |
| 16 X 16 X 2 | 15-5/8 | 15-5/8 | 1-3/4 | 550 | 900 | 1125 | 3.7 | 5.7 | 8.5 |
| 16 X 20 X 2 | 15-1/2 | 19-1/2 | 1-3/4 | 675 | 1125 | 1400 | 4.7 | 7.1 | 10.7 |
| 16 X 24 X 2 | 15-1/2 | 23-1/2 | 1-3/4 | 800 | 1350 | 1675 | - | 8.5 | 12.8 |
| 16 X 25 X 2 | 15-1/2 | 24-1/2 | 1-3/4 | 850 | 1400 | 1750 | 5.8 | 8.9 | 13.3 |
| 18 X 20 X 2 | 17-1/2 | 19-1/2 | 1-3/4 | 750 | 1250 | 1575 | - | 8.0 | 12.0 |
| 18 X 24 X 2 | 17-1/2 | 23-1/2 | 1-3/4 | 900 | 1500 | 1875 | 6.3 | 9.6 | 14.4 |
| 18 X 25 X 2 | 17-1/2 | 24-1/2 | 1-3/4 | 950 | 1575 | 1975 | 6.6 | 10.0 | 15.0 |
| 20 X 20 X 2 | 19-1/2 | 19-1/2 | 1-3/4 | 850 | 1400 | 1750 | 5.8 | 8.9 | 13.3 |
| 20 X 24 X 2 | 19-1/2 | 23-1/2 | 1-3/4 | 1000 | 1675 | 2100 | 7.0 | 10.7 | 16.0 |
| 20 X 25 X 2 | 19-1/2 | 24-1/2 | 1-3/4 | 1050 | 1750 | 2175 | 7.3 | 11.1 | 16.7 |
| 20 X 30 X 2* | 19-5/8 | 29-5/8 | 1-3/4 | 1250 | 2100 | 2625 | 8.8 | 13.3 | 20.0 |
| 24 X 24 X 2 | 23-3/8 | 23-3/8 | 1-3/4 | 1200 | 2000 | 2500 | 8.4 | 12.8 | 19.2 |
| 25 X 25 X 2 | 24-1/2 | 24-1/2 | 1-3/4 | 1325 | 2175 | 2725 | - | 13.9 | 20.8 |
| 12 X 24 X 4 | 11-3/8 | 23-3/8 | 3-5/8 | 600 | 1000 | 1250 | 7.8 | 11.8 | 14.4 |
| 16 X 20 X 4 | 15-1/2 | 19-1/2 | 3-5/8 | 675 | 1125 | 1400 | 8.7 | 13.1 | 16.0 |
| 16 X 24 X 4 | 15-1/2 | 23-1/2 | 3-5/8 | 800 | 1350 | 1675 | - | 15.7 | 19.2 |
| 16 X 25 X 4 | 15-1/2 | 24-1/2 | 3-5/8 | 850 | 1400 | 1750 | 10.8 | 16.4 | 20.0 |
| 18 X 24 X 4 | 17-1/2 | 23-1/2 | 3-5/8 | 900 | 1500 | 1875 | 11.7 | 17.7 | 21.6 |
| 20 X 20 X 4 | 19-1/2 | 19-1/2 | 3-5/8 | 850 | 1400 | 1750 | 10.8 | 16.4 | 20.0 |
| 20 X 24 X 4 | 19-1/2 | 23-1/2 | 3-5/8 | 1000 | 1675 | 2100 | 13.0 | 19.7 | 24.0 |
| 20 X 25 X 4 | 19-1/2 | 24-1/2 | 3-5/8 | 1050 | 1750 | 2175 | 13.5 | 20.5 | 25.0 |
| 24 X 24 X 4 | 23-3/8 | 23-3/8 | 3-5/8 | 1200 | 2000 | 2500 | 15.6 | 23.6 | 28.8 |
| 25 X 29 X 4* | 24-1/2 | 28-1/2 | 3-5/8 | 1525 | 2525 | 3150 | 19.6 | 29.7 | 36.2 |

NOTES

* - These filters are listed H x W x D

Special Size Filters are available – contact your local representative for additional information.

Width and Height dimensions are interchangeable.

Continuous Operating Temperature is 150°F

Tri-Dim Filter Corporation is committed to continual product development – all descriptions, specifications and performance data are subject to change without notice. Tri-Dim products are manufactured to exacting criteria - there can be a ±5% variance in filter performance. Tri-Dim® and Tri-Dek® are Registered Trademarks of Tri-Dim Filter Corporation.



TRI-DIM FILTER CORPORATION
P.O. BOX 466 • 93 INDUSTRIAL DRIVE
LOUISA, VA 23093

(540) 967-2600 • FAX: (540) 967-2835

EMAIL: info@tridim.com • Website: www.tridim.com

TOLL FREE 1-800-458-9835



Local Representation:

BROCHURE #900-6
Revision: 06/2011



PLEASE RECYCLE - This paper may not be recyclable in your area if facilities do not exist. This brochure is printed on paper that is certified by the Sustainable Forestry Initiative (SFI) - for more information go to www.sfi.org.

