

AlerTox® Sticks

Egg

Rapid immunochromatographic test for qualitative detection of ovalbumin in food, kitchens and production facilities.

AlerTox[®]Sticks

Egg

Contents

1. Intended use.....	2
2. Introduction	2
3. Test sensitivity and specificity	2
4. Kit contents	2
5. Other materials not supplied	3
6. Precautions	3
7. Test procedure for solid foods.....	3
8. Test procedure for liquid samples	4
9. Test procedure for surfaces.....	5
10. Interpretation of results	6
11. Validation	6

1. Intended use

AlerTox Sticks Egg is a rapid immunochromatographic test for the qualitative detection of ovalbumin in food, kitchens and production facilities.

2. Introduction

Egg protein is considered one of the major food allergens. Egg allergies often cause severe and even fatal immune reactions including anaphylaxis, acute bronchial asthma, severe atopic dermatitis and gastroenterocolitis. Eggs are widely used in food products such as ice cream, noodles, pasta, dressings and wine. Egg traces may remain on surfaces used for food processing. Furthermore, some vaccines may also contain trace amounts of egg proteins, posing a hazard when injected to allergic individuals. In 2004, the Food Allergen Labeling and Consumer Protection Act (FALCPA) required mandatory labeling of potential presence of egg allergen in foods.

3. Test sensitivity and specificity

AlerTox Sticks Egg is based on a lateral flow immunoassay and uses antibodies specific to ovalbumin. This test is able to detect ovalbumin residues in a large variety of food matrices and also in environmental samples.

Considering the dilution of the sample in the provided extraction solution, a sample should contain more than 2.5 ppm of ovalbumin to obtain a positive result.

Samples that are very viscous, dense or with a high fat content can migrate incorrectly along the chromatography membrane, affecting the assay result (attenuation or disappearance of test and control lines).

AlerTox Sticks Egg is designed to detect low concentrations of the analyte. When testing samples with a high content of the analyte, the test can present a hook effect, which can appear as a negative result or a test line with reduced intensity. If a false negative due to hook effect is suspected, repeat the test on a diluted sample.

AlerTox Sticks Egg is not capable of detecting ovalbumin in heat-treated matrices (i.e. over 100 °C / 212 °F for over 30 min).

AlerTox Sticks Egg is a qualitative assay. If you need to quantify the amount of antigen, please contact your supplier or acquire AlerTox ELISA Egg (KT-5904/KIT3046) or AlerTox ELISA Ovalbumin (KT-5759/KIT3045).

4. Kit contents

Component	KT-5898 KIT3026	KT-5899 KIT3025
Sealed tube containing ovalbumin immunochromatographic sticks	1 (25 sticks)	1 (10 sticks)
Bottle containing 60 mL of extraction solution, ready to use	3	1
Small yellow pipettes 1 mL	25	10
Large transparent pipettes 3 mL	25	10
Empty tubes for extraction procedure	25	10
Microtiter 8-well strips	4	2
Microtiter tray	1	1
Swabs for surface sampling	25	10

5. Other materials not supplied

- Grinder, mortar or any other manual or automatic homogenization system to crush the sample.
- Vortex mixer/shaker (recommended, not required).
- Pipette or syringe to take 0.5 mL (only for liquid samples).
- Scissors (only for surface sampling).
- Digital scale to weigh 0.5 g (sensitive to 0.1 g).

6. Precautions

- All components should be stored at a temperature between 2 - 25 °C (36 - 77 °F).
- All components should be stored inside their original package until the time of use.
- Do not touch the white end of the stick.
- Do not use the stick if it is broken or damaged.
- All the components of the test kit are disposable; do not reuse them.
- Do not use the test sticks beyond the expiration date.

7. Test procedure for solid samples

- 7.1.** Mash or crush the sample to obtain the finest crumbs possible. Use a mortar or a grinder if possible.
- 7.2.** Weigh 0.5 g into one of the provided tubes. Add 5 mL of extraction solution with the transparent pipette.
- 7.3.** Shake for at least 20 seconds using a vortex mixer to ensure homogenization. Alternatively, you can shake the tube vigorously by hand. Let it rest for 2 minutes so the solids settle.
- 7.4.** Using the yellow pipette, add 10 drops of the supernatant to a clean, unused well (8-well strips provided). For samples with a high fat content, avoid taking the fat layer of the supernatant.
- 7.5.** Open the tube containing the sticks just before performing the assay and take only the needed amount of sticks. Close the tube immediately.
- 7.6.** Insert the white end of the stick vertically in the well containing the sample extract and wait 10 minutes to read the result. Do not touch or remove the stick from the well while waiting for the test result.

NOTE: The larger the sample size, the more representative of the matrix the analysis will be and, therefore, the more reliable. If you want to extract a larger sample, be sure to maintain the 1:10 ratio for sample weight (g) : extraction solution (ml).

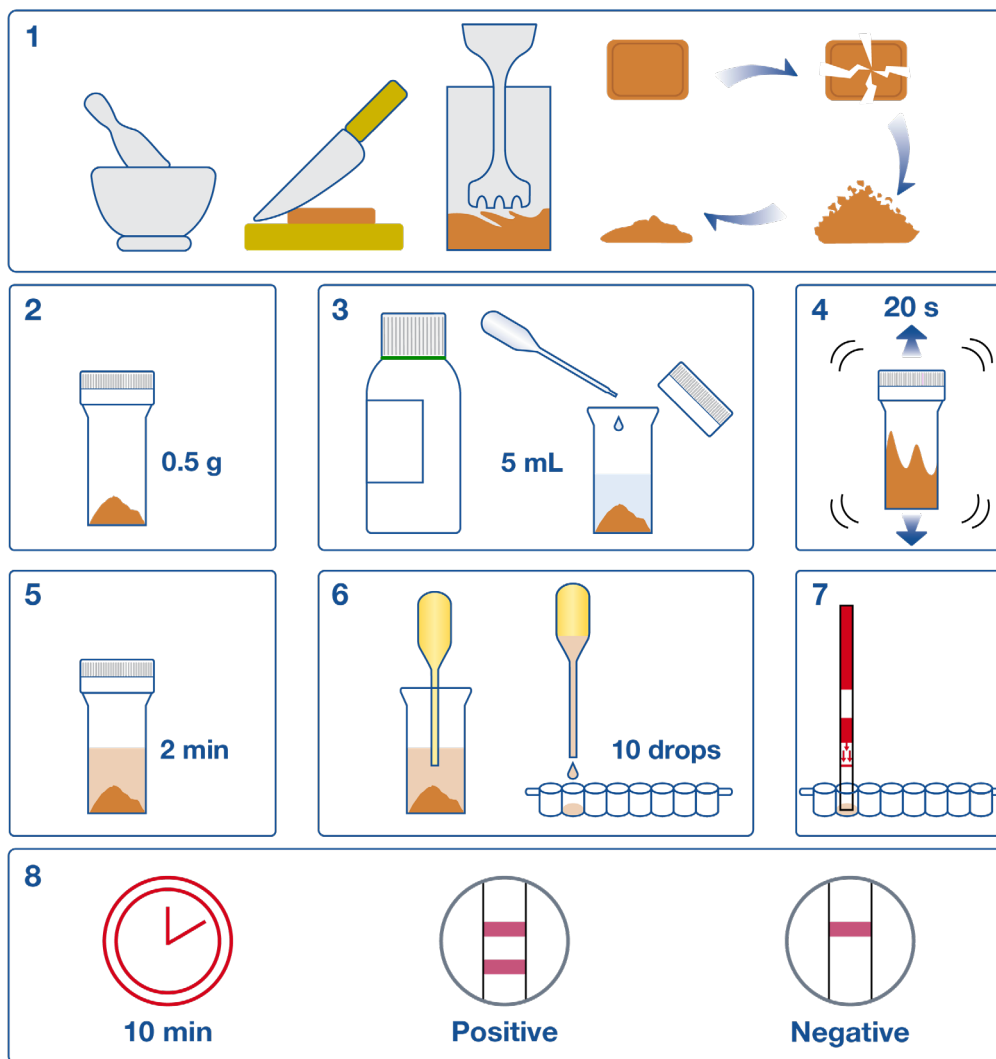


Figure 1. Test procedure for solid samples

8. Test procedure for liquid samples

- 8.1.** Shake the sample to ensure it is homogeneous and that you are taking a representative part of it.
- 8.2.** Take 0.5 mL of the sample with a pipette or syringe (not provided) and put it into one of the provided extraction tubes. Add 4.5 mL of extraction solution with the transparent pipette.
- 8.3.** Stir for at least 20 seconds using a vortex mixer to ensure homogeneization. Alternatively, you can shake it vigorously by hand. If the liquid is cloudy, let it rest for 2 minutes so the solids settle.
- 8.4.** Using the yellow pipette, add 10 drops of the supernatant to a clean unused well (8-well strips provided). For samples with a high fat content, avoid taking the fat layer of the supernatant.
- 8.5.** Open the tube containing the sticks just before performing the assay and take only the needed amount of sticks. Close the tube immediately.
- 8.6.** Insert the white end of the stick vertically in the well containing the sample extract and wait 10 minutes to read the result. Do not touch or remove the stick from the well while waiting for the test result.

NOTE: The larger the sample size, the more representative of the matrix the analysis will be and, therefore, the more reliable. If you want to extract a larger sample, be sure to maintain the 1:10 ratio of sample volume : extraction mixture volume.

9. Test procedure for surfaces

- 9.1. Take a clean, unused swab for every sample. The swab can be used on the working surface or equipment with a suspected contamination.
- 9.2. Add 0.5 mL of extraction solution to one of the provided extraction tube. Moisten the tip of the swab with the solution, press it firmly against the chosen surface and rub it in a zigzag pattern, while rolling the swab during the process (Fig. 2). The area selected for analysis must be representative of the total area of interest.
- 9.3. Put the swab in the tube and press it against the inside walls to facilitate the extraction of the sample.
- 9.4. Using a pair of scissors, trim the swab so that it will fit in the tube with the cap closed.
- 9.5. Shake for at least 20 seconds using a vortex mixer to ensure homogenization. Alternatively, shake the tube vigorously by hand.
- 9.6. Open the tube and remove the swab.
- 9.7. Open the tube containing the sticks just before performing the assay and take only the needed amount of sticks. Close the tube immediately.
- 9.8. Insert the white end of the stick vertically in the tube and wait 10 minutes to read the result. Do not touch or remove the stick from the tube while waiting for the test result.

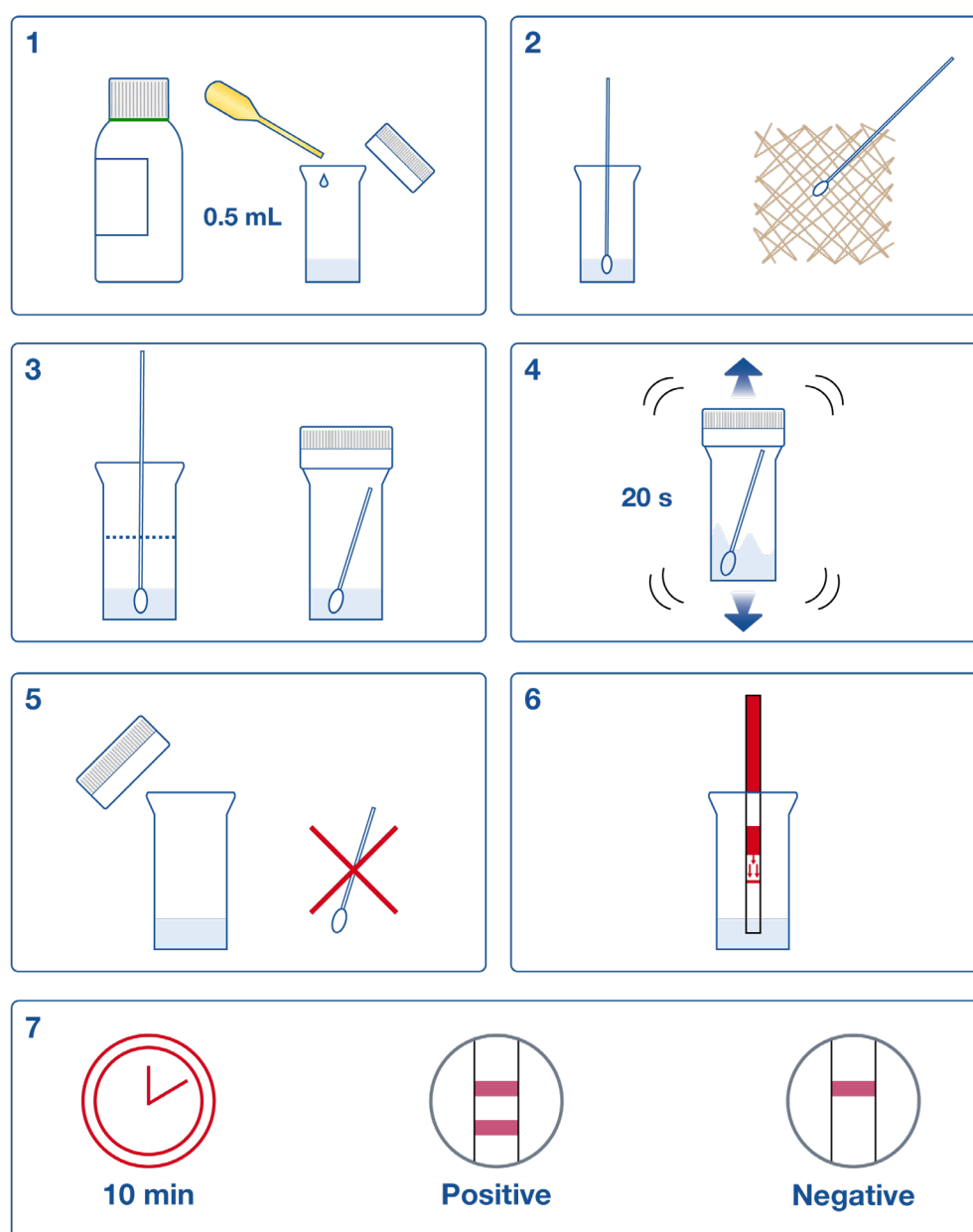


Figure 2. Test procedure for surfaces

10. Interpretation of results

The result of the test is POSITIVE if TWO red lines appear: one in the control zone (C) and one in the test zone (T). The color intensity of the test line may vary, but it is not necessarily proportional to the concentration of ovalbumin in the sample.



The result of the test is NEGATIVE if only ONE red line is clearly visible in the control zone (C).



If NO red line appears in the control zone (C), the test is INVALID.



In the case of an invalid test, repeat the test with another stick, check the correct specimen handling and test procedure, expiry date and storage conditions. Contact your distributor for further details.

IMPORTANT NOTE!

- **AlerTox Sticks is a qualitative test intended for the screening of samples for internal quality control. Under no circumstances can it replace the quantification test of the laboratory analysis.**

11. Validation

AlerTox Sticks Egg has been validated for the following matrices:

- Baby food
- Biscuits
- Cereals
- Soy drinks
- Lyophilized food
- Baked products
- Chocolate cookies
- Chocolate cereals
- Chocolate
- Meat products
- Alcoholic and non-alcoholic drinks
- Sauces
- Cereal products
- Snacks
- Drinks and soy food
- Medications