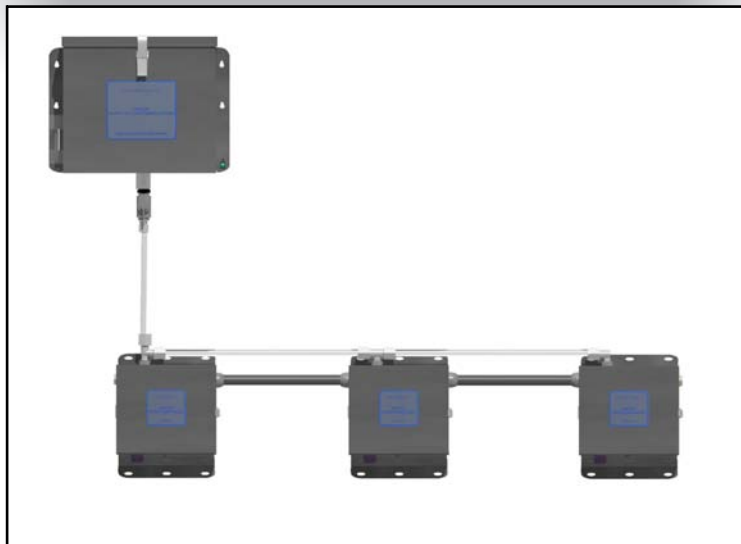




CHAMPION 3000 SERIES

CHAMPION 3000 INSTRUCTION MANUAL Rev 103100



Installation

Electrical Hook-up

Purging Air

Cleaning the Nozzle

Adjusting Spray Time

Replacing the Fuse

Parts Diagram

Troubleshooting

Technical Specifications

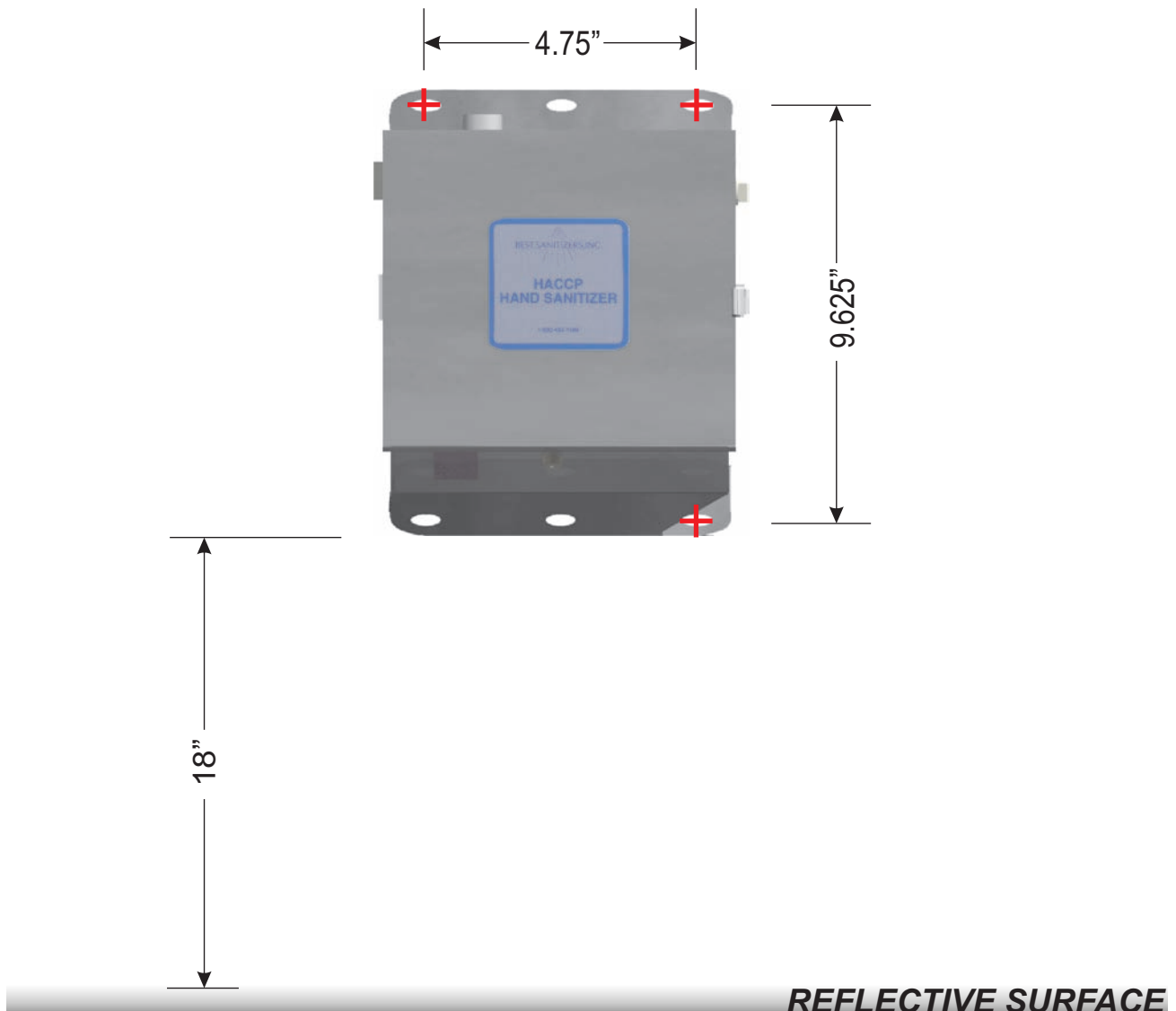


nelsonjameson.com

800-826-8302

MOUNTING INSTRUCTIONS

1. The dispenser uses an infra-red transmitter and receiver to sense your hand. Make certain the dispenser is mounted at least 18 inches above any reflective surfaces (i.e. stainless steel and porcelain sinks). Failure to follow this will cause the sensor to false trigger.
2. Mount the dispenser on the wall. The dispenser weighs approximately 5.2 lbs, make certain it is anchored firmly to the wall.



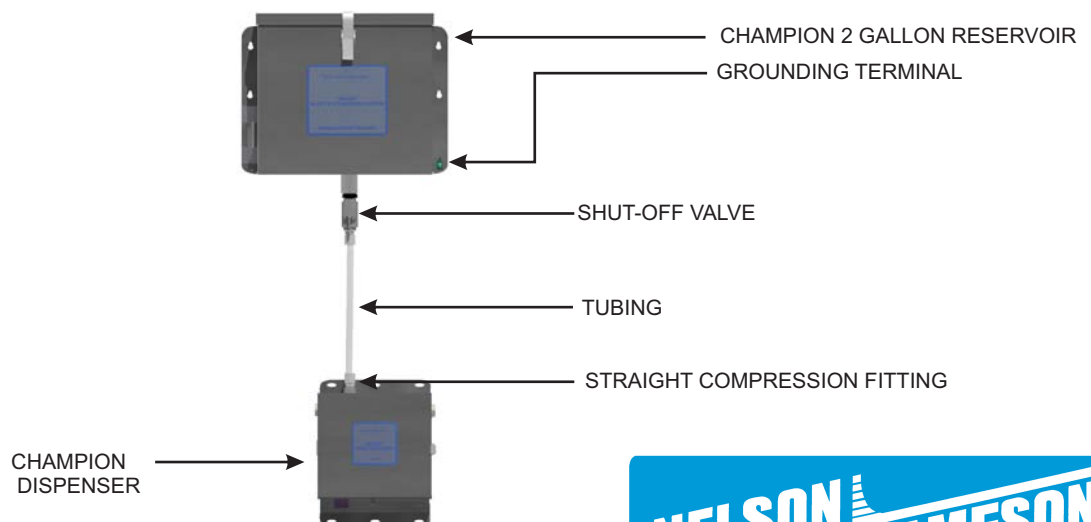
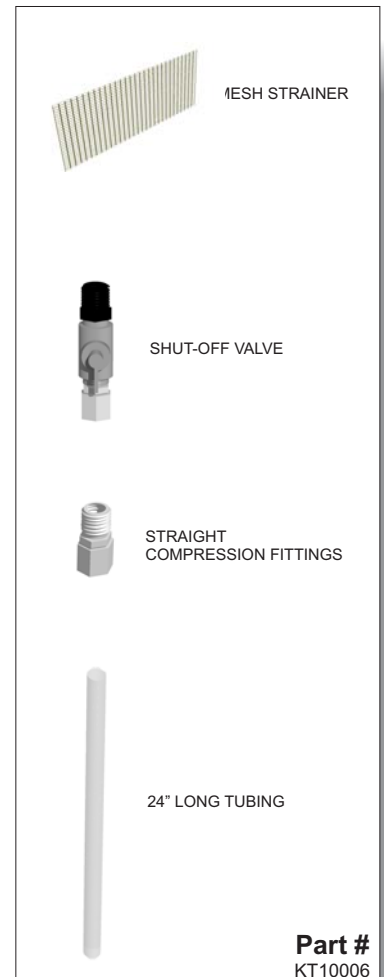
nelsonjameson.com

800-826-8302

SINGLE UNIT TANK HOOK-UP

1. Mount the 2 gallon reservoir to the wall (Reservoir A/S - sold separately). The tank when filled will weigh approximately 25 pounds. Make certain it is firmly anchored to the wall. The tank should be mounted at least 70" from the floor.
2. Mount the dispenser on the wall (refer to page 2). It should not be mounted any further than 24" from the tank.
3. Screw the shut-off valve into the tank, 1 of the straight compression fittings into the shut-off valve, and the other straight compression fitting into the dispenser.
4. Cut the tube to fit and insert it into the compression fittings. Tighten the compression fittings around the tubing.
5. ***Due to the flammable nature of alcohol, ground the tank by using the available grounding terminal.***
6. Inset the mesh strainer in the bottom of the tank.
7. Proceed to the electrical hook-up on page 5.

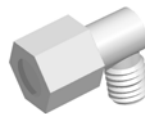
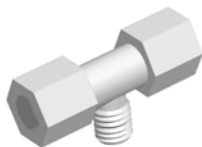
WHAT YOU NEED TO BEGIN:



nelsonjameson.com

800-826-8302

MULTIPLE UNIT TANK HOOK-UP

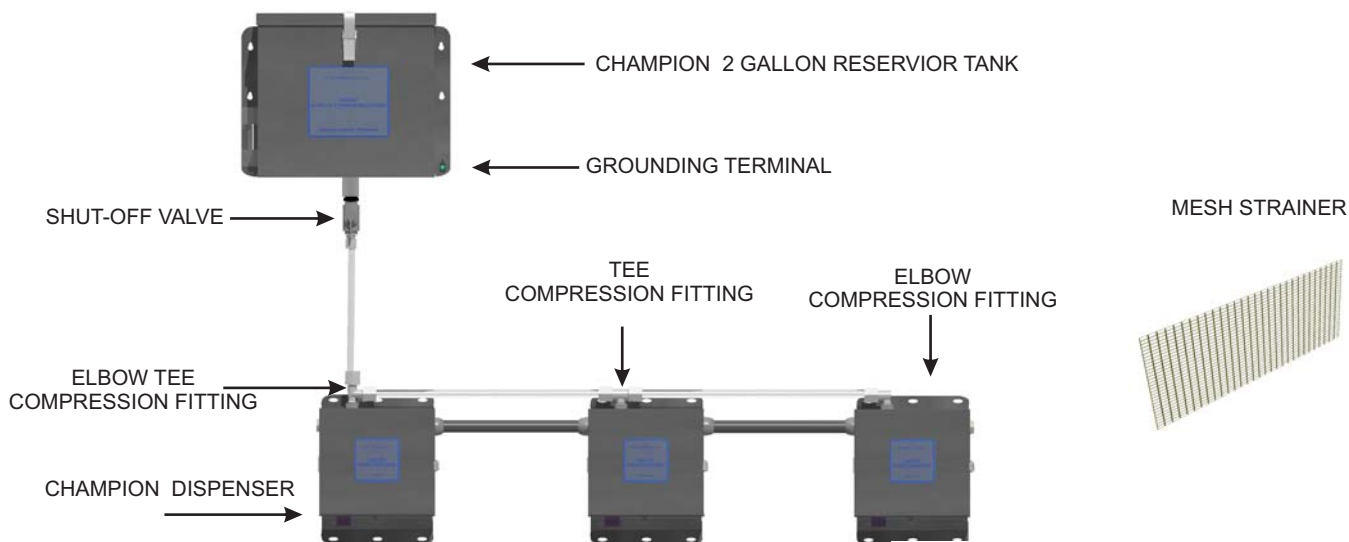


NUMBER OF FITTINGS

NUMBER OF DISPENSERS

PART #	ELBOW TEE COMPRESSION FITTING	TEE COMPRESSION FITTING	ELBOW COMPRESSION FITTING	SHUT-OFF VALVE	24" LONG TUBE
KT10007	1	0	1	1	2
KT10008	1	1	1	1	3
KT10009	1	2	1	1	4
KT10010	1	3	1	1	5

1. Mount the 2 gallon reservoir to the wall (B111-Sold separately). The tank, when filled, will weigh approximately 25 pounds. Make certain it is firmly anchored to the wall. The tank should be mounted at least 70" from the floor.
2. Mount the first dispenser on the wall (refer to page 2). It should not be mounted any further than 24" from the tank. Each of the following dispensers should be mounted level with the first and should not be mounted any more than 24" away from each other.
3. Screw the shut-off valve into the tank and then the appropriate fittings into the dispensers (refer to the chart).
4. Cut the tubes to fit and insert them into the compression fittings. Tighten the compression fittings around the tubing.
5. **Due to the flammable nature of alcohol, ground the tank by using the available grounding terminal.**
6. Insert the strainer into the opening on the bottom of the tank. Proceed to the electrical hook-up.






nelsonjameson.com

800-826-8302

ELECTRICAL HOOK-UP

CAUTION - THERE ARE THREE DIFFERENT VOLTAGE RATINGS AVAILABLE WITH THE CHAMPION 3000:

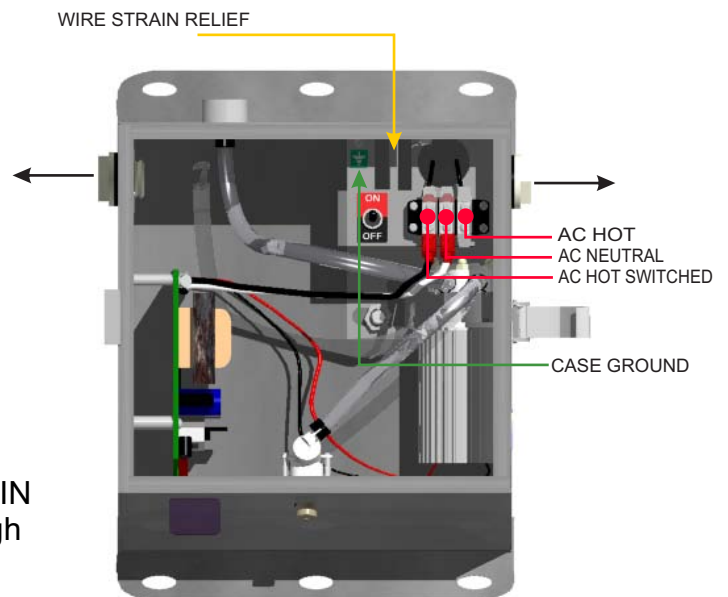
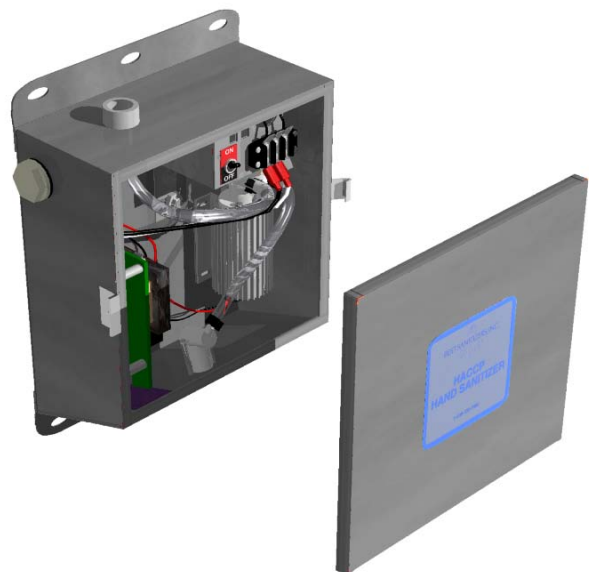
-  14.5 VAC
-  110 VAC
-  220 VAC

MAKE SURE YOU SUPPLY THE CORRECT VOLTAGE. THE VOLTAGE RATING IS ON THE SERIAL TAG ON THE RIGHT HAND SIDE OF THE DISPENSER.

It is recommended that 1/2" conduit be used along with the appropriate connections. ***Make sure the conduit is completely sealed from external elements.***

1. Remove the cover. There is a Nylon Plug on both the left and right sides. Remove the plug on the side you want to run the electrical conduit. Remove both if multiple units are going to be daisy-chained.
2. Quick Disconnect terminals are provided for ease of wiring installation. Connect a white 16 AWG 250V (= or +) to the AC NEUTRAL terminal. Connect a black 16 AWG 250V (= or +) to the AC HOT terminal. If you want to add multiple units there are two additional terminal connections available on the AC NEUTRAL and AC HOT terminals.
3. Attach a Green wire to the CASE GROUND. The screw provided is a # 6 screw. We recommend using a #6 Ring Connector.

NOTE: There are two rectangular WIRE STRAIN RELIEFS. Wiring can be woven through these to provide a strain relief.



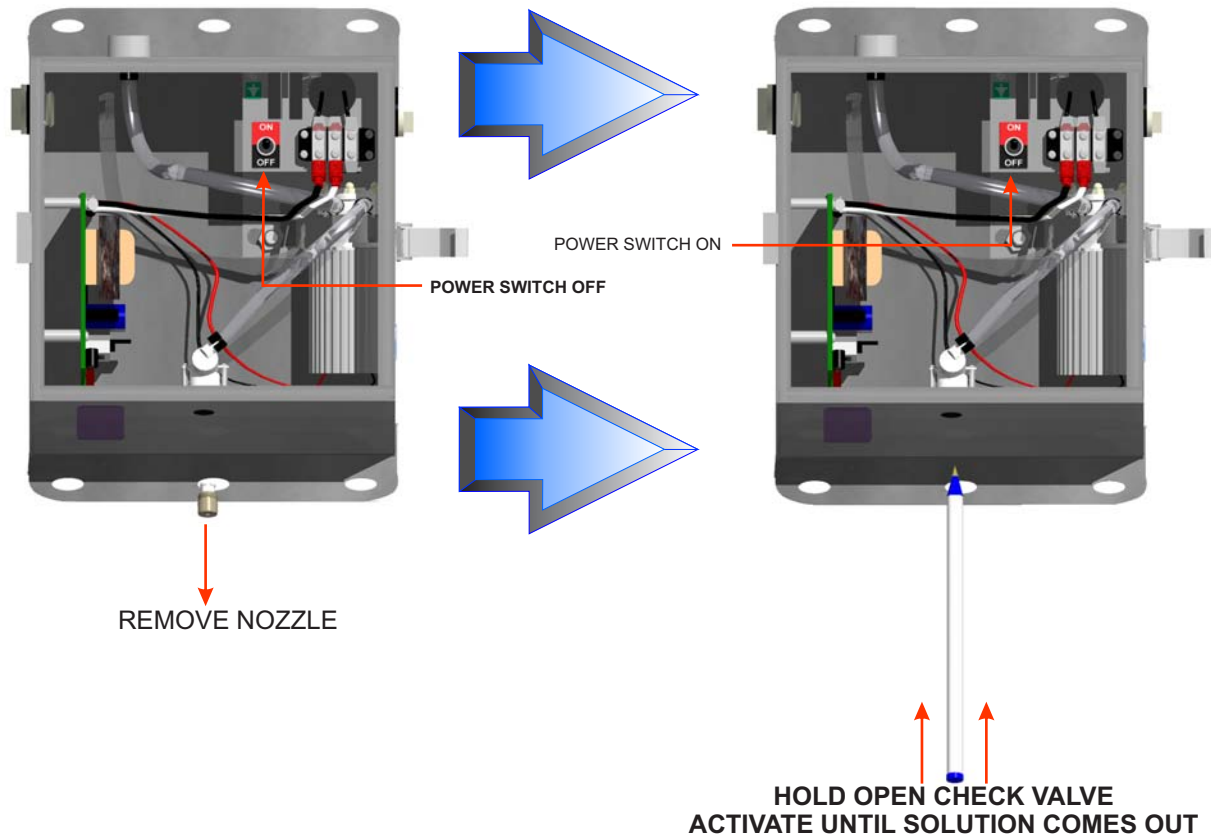
nelsonjameson.com

800-826-8302

PURGING AIR FROM THE DISPENSER

The dispenser comes pre-primed with water. However, if you are having trouble getting the unit to dispense, there may be air in the lines that will need to be purged. Also, if the dispenser runs completely out of solution, the air in the lines will need to be purged.

1. Fill the tank (Reservoir A/S) with either BEST SANITIZERS' soap (Campion 3000S) or sanitizer (Champion 3000A).
2. Remove the nozzle by turning it counterclockwise. Remove the enclosure cover. If there are 2 or more units per bank, start this procedure with the last one on the bank and work toward the first.
3. Take a ballpoint pen, or something of similar size, and stick it into the hole from which you removed the nozzle. You should feel a spring activated check valve open. **Hold it open.**
4. With the unit powered, using your free hand, activate it several times until you get a steady flow of solution.
5. After the air has been purged, turn the power switch off. Replace the nozzle and then turn the power switch on. Replace the enclosure cover.



nelsonjameson.com

800-826-8302

CLEANING THE NOZZLE

If the nozzle isn't spraying, i.e. a stream is coming out of the nozzle, it may need to be cleaned.

1. Remove the enclosure cover and turn the Power Switch off.
2. Remove the nozzle from the dispenser by turning it Counterclockwise.
3. Under a faucet and with a soft brush, clean the screen on the top of the nozzle.
4. Replace the nozzle into the dispenser.
5. Turn the power switch on and replace the enclosure cover.

CLEAN THE SCREEN
ON THE NOZZLE



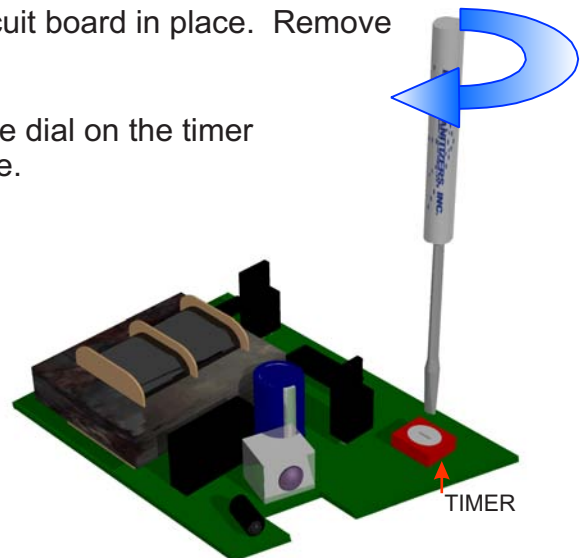
ADJUSTING THE SPRAY TIME

It may be necessary to adjust the spray time if too much solution is being dispensed.

1. Remove the enclosure cover. Turn the power switch off.
2. Remove the two screws that are holding the circuit board in place. Remove the circuit board.
3. With a small flat head screw driver, turn the white dial on the timer so that the arrow points to the desired spray time.

SPRAY TIMES ARE AS FOLLOWS

- 1 = 0.2 seconds
- 2 = 0.4 seconds
- 3 = 0.5 seconds
- 4 = 1 second
- 5 = 1.5 seconds
- 6 = 2 seconds
- 7 = 2.5 seconds
- 8 = 3 seconds
- 9 = 3.5 seconds



4. Replace the circuit board, turn the power on, and replace the enclosure cover.



nelsonjameson.com

800-826-8302

REPLACING THE FUSE (110VAC and 220VAC units High Voltage units only)

It may be necessary to replace the fuse if a power surge occurs. If the fuse is suspected to be blown:

1. Remove the enclosure cover and turn the power switch to the off position.
2. For safety, disconnect the circuit board's AC wires from the terminal block.
3. With a small flathead screwdriver remove the fuse.
4. Examine the fuse to see if it is blown

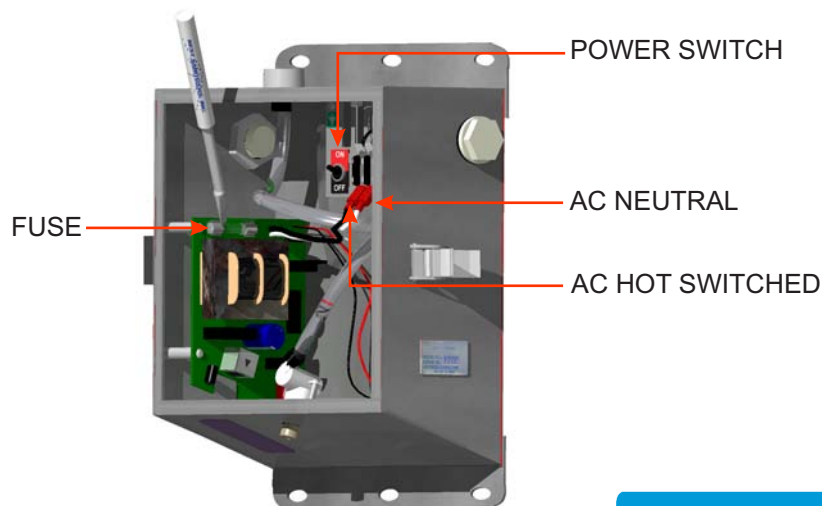


BLOWN



NOT BLOWN

5. If it is blown, replace it as it is marked with **2.5 amp, fast blow fuse**.
6. Reconnect the circuit board's AC wires. Black to AC Hot Switched, white to AC Neutral.
7. Turn the power switch to the on position and replace the enclosure cover.

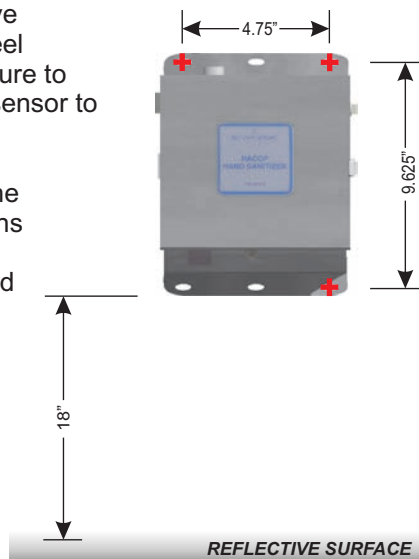


nelsonjameson.com

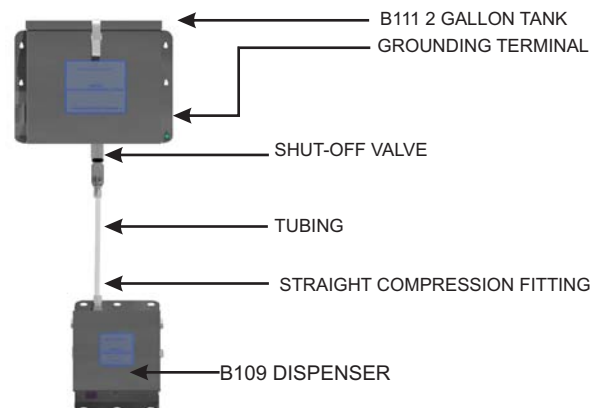
800-826-8302

MOUNTING INSTRUCTIONS

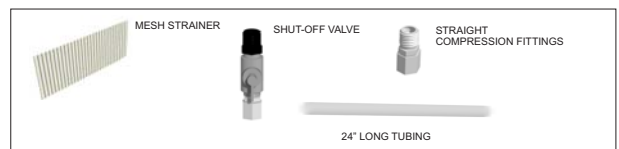
1. The dispenser uses an infra-red transmitter and receiver to sense your hand. Make certain the dispenser is mounted at least 18 inches above any reflective surfaces (i.e. stainless steel and porcelain sinks). Failure to follow this will cause the sensor to false trigger.
2. Mount the dispenser on the wall. The dispenser weighs approximately 5.2 lbs. make certain it is anchored firmly to the wall.



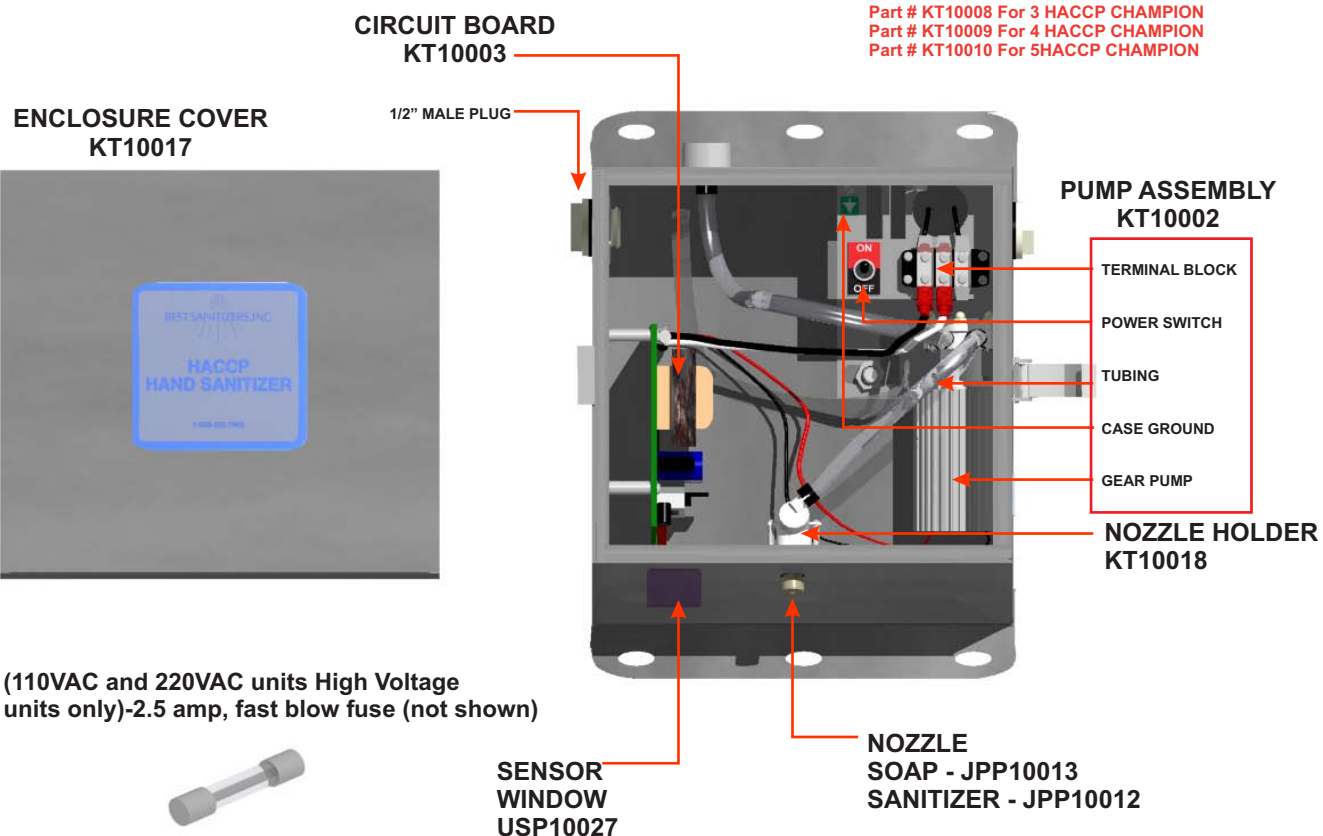
HACCP CHAMPION PARTS DIAGRAM



Compression Fitting Kit: Part # KT10006 For 1 HACCP CHAMPION



Part # KT10007 For 2 HACCP CHAMPION
 Part # KT10008 For 3 HACCP CHAMPION
 Part # KT10009 For 4 HACCP CHAMPION
 Part # KT10010 For 5 HACCP CHAMPION



HACCP CHAMPION 3000

PRODUCT #AD10017 SANITIZER Dispenser
 PRODUCT #AD10018 SOAP Dispenser
 PRODUCT #AD10006 Champion Power Supply 110VAC to 14.5 VAC
 PRODUCT #AD10007 Champion Power Supply 220VAC to 14.5 VAC
 PRODUCT #AD10008 Champion Reservoir-SANITIZER
 PRODUCT #AD10009 Champion Reservoir-SOAP



nelsonjameson.com

800-826-8302

TROUBLESHOOTING

Before requesting service for this dispenser, check the chart below for the possible cause of the problem. Some simple checks may eliminate the problem and restore the dispenser to proper operation.

If you are in doubt about some of the check points, or if the remedies which are indicated in the chart do not solve the problem, please contact BEST SANITIZERS' CUSTOMER SERVICE for instructions.

PROBLEM	PROBABLE CAUSE	SUGGESTED REMEDY
No solution is being dispensed (The pump isn't working)	a) The dispenser is not powered b) The sensor window is dirty c) The fuse is blown	a) Check wiring and make sure of the presence of the proper AC voltage (page 5) b) Clean the sensor window c) Replace the fuse as marked (page 8)
No solution is being dispensed (The pump is working)	a) The solution ran out and the tank is empty b) The nozzle is dirty	a) Refill the tank with BEST products b) Clean the screen on the nozzle (page 7) c) Clean the screen in the tank
The dispenser does not stop dispensing	a) The sensor is picking up a highly reflective surface b) The sensor window is dirty c) There is condensation on the <i>inside</i> of the sensor window	a) Relocate the dispenser away from any reflective surfaces (page 2) b) Clean the sensor window c) Wipe off the moisture from the sensor window
The dispenser isn't properly dispensing the correct amount of solution	a) The timer is not adjusted properly b) There is air in the lines that needs to be purged	a) Adjust the timer (page 7) b) Purge the air from the lines (page 6)

Please refer servicing to qualified personnel. BEST SANITIZERS' servicing department will need all components to service your unit. Therefore, when you need service, please ship the dispenser in its entirety. **NO RETURNED DISPENSER WILL BE ACCEPTED WITHOUT A RETURN MERCHANDISE AUTHORIZATION #.** Contact BEST SANITIZERS' customer service to obtain a R.M.A. # and instructions.

TECHNICAL SPECIFICATIONS

MODEL	Champion 3000
FLOW	Approximately 1 mL/second
DIMENSIONS	6.5" W x 4.625"D x 10.25"H
BODY WEIGHT	5.2 Pounds

POWER SOURCE	14.5 VAC 60Hz	110 VAC 60 Hz	220 VAC 60 Hz
POWER CONSUMPTION (waiting)	0.12 Watts	0.88 Watts	1.76 Watts
POWER CONSUMPTION (working)	6.45 Watts	48.84 Watts	97.68 Watts



nelsonjameson.com

800-826-8302