



- Made from the highest quality low expansion borosilicate 3.3 glass
- Great heat tolerance and chemical resistance, autoclavable at 121°C
- Manufactured in accordance with ISO/DIN/ASTM standards
- Volumetric glassware is hand calibrated in an ISO17025 compliant laboratory

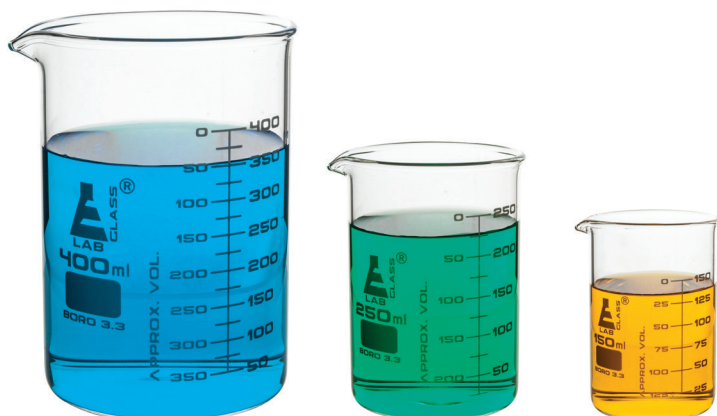
Thermal Properties

The coefficient of thermal expansion and temperature gradient of ELabGlass® are low allowing the glass to withstand higher temperature gradients as well as sudden temperature changes (thermal shock).

Coefficient of Linear Expansion	$3.3 \times 10^{-6}/^{\circ}\text{C}$
Strain Point	515 °C
Annealing Point	565 °C
Softening Point	820 °C
Specific Heat (J/kg·°C)	0.20
Thermal Conductivity (Cal/cm ³ °C/Sec)	0.0027

Chemical Durability

ELabGlass® glassware is highly resistant to water, neutral and acidic solutions, concentrated acids, chlorine, bromine iodine, and organic matter. It can withstand dry and wet sterilization without surface deterioration and subsequent contamination. Only hydrofluoric acid, very hot phosphoric acid and alkaline solutions increasingly attack the glass surface with rising concentration and temperature.



ASTM BEAKERS

Code	Capacity	Graduations
CH0124A10	10 ml	2 ml
CH0124A20	20 ml	5 ml
CH0124A30	30 ml	5 ml
CH0124B	50 ml	5 ml
CH0124C	100 ml	10 ml
CH0124D	150 ml	25 ml
CH0124E	250 ml	25 ml
CH0124F	400 ml	25 ml
CH0124G	600 ml	50 ml
CH0124H	800 ml	50 ml
CH0124I	1000 ml	50 ml
CH0124J	2000 ml	100 ml

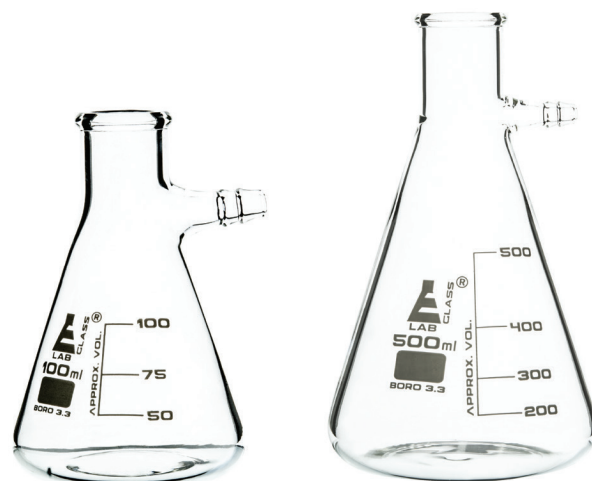
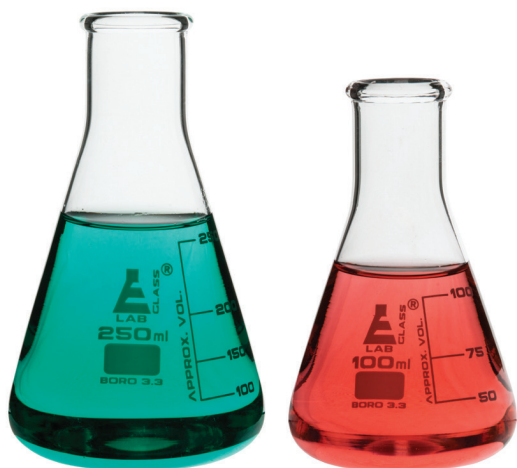


CLASS-A VOLUMETRIC FLASKS WITH GLASS STOPPER

Blue Grad.	White Grad.	Capacity	Tolerance \pm	Stopper no.
CH0441A01	CH0441A01-WT	5 ml	0.020 ml	9
CH0441A02	CH0441A02-WT	10 ml	0.020 ml	9
CH0441A	CH0441A-WT	25 ml	0.030 ml	9
CH0441B	CH0441B-WT	50 ml	0.050 ml	13
CH0441C	CH0441C-WT	100 ml	0.080 ml	13
CH0441D	CH0441D-WT	200 ml	0.100 ml	16
CH0441E	CH0441E-WT	250 ml	0.120 ml	16
CH0441F	CH0441F-WT	500 ml	0.200 ml	19
CH0441G	CH0441G-WT	1000 ml	0.300 ml	22
CH0441H	CH0441H-WT	2000 ml	0.500 ml	27

CLASS-B VOLUMETRIC FLASKS WITH GLASS STOPPER

Blue Grad.	White Grad.	Capacity	Tolerance \pm	Stopper no.
CH0442A01	CH0442A01-WT	5 ml	0.040 ml	9
CH0442A02	CH0442A02-WT	10 ml	0.040 ml	9
CH0442A	CH0442A-WT	25 ml	0.060 ml	9
CH0442B	CH0442B-WT	50 ml	0.100 ml	13
CH0442C	CH0442C-WT	100 ml	0.160 ml	13
CH0442D	CH0442D-WT	200 ml	0.200 ml	16
CH0442E	CH0442E-WT	250 ml	0.240 ml	16
CH0442F	CH0442F-WT	500 ml	0.400 ml	19
CH0442G	CH0442G-WT	1000 ml	0.600 ml	22
CH0442H	CH0442H-WT	2000 ml	1.000 ml	27



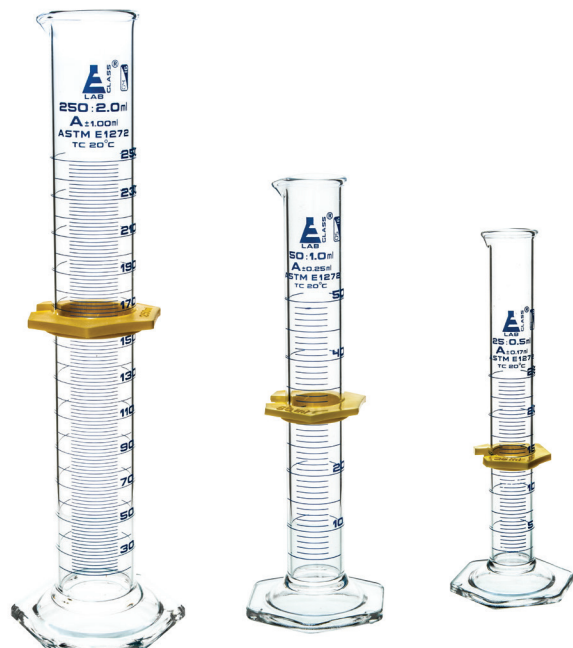
CONICAL/ERLENMEYER FLASKS, NARROW NECK

Code	Capacity	Graduation
CH0424B	25 ml	12.5 ml
CH0424C	50 ml	25 ml
CH0424D	100 ml	25 ml
CH0424E	150 ml	25 ml
CH0424E01	200 ml	50 ml
CH0424F	250 ml	50 ml
CH0424F01	300 ml	50 ml
CH0424G	500 ml	100 ml
CH0424H	1000 ml	200 ml
CH0424I	2000 ml	250 ml
CH0424J	3000 ml	500 ml
CH0424K	5000 ml	500 ml

FILTERING FLASKS, NARROW NECK

Code	Capacity	Graduation
CH0420A	100 ml	25 ml
CH0420B	250 ml	50 ml
CH0420C	500 ml	100 ml
CH0420D	1000 ml	200 ml
CH0422E	2000 ml	250 ml
CH0422F	5000 ml	500 ml

Visit eiscoinindustrial.com for a complete listing of all Flasks



eisco
INDUSTRIAL

LAB [®] **GLASS**

CLASS-A GRADUATED CYLINDERS WITH HEXAGONAL BASE AND GUARD

Blue Grad.	White Grad.	Capacity	Graduation	Tolerance ±
CH0341A-BL	CH0341A	10 ml	0.20 ml	0.10 ml
CH0341B-BL	CH0341B	25 ml	0.50 ml	0.17 ml
CH0341C-BL	CH0341C	50 ml	1.00 ml	0.25 ml
CH0341D-BL	CH0341D	100 ml	1.00 ml	0.50 ml
CH0341E-BL	CH0341E	250 ml	2.00 ml	1.00 ml
CH0341F-BL	CH0341F	500 ml	5.00 ml	2.00 ml
CH0341G-BL	CH0341G	1000 ml	10.00 ml	3.00 ml
CH0341H-BL	CH0341H	2000 ml	20.00 ml	6.00 ml

CLASS-B GRADUATED CYLINDERS WITH HEXAGONAL BASE AND GUARD

Blue Grad.	White Grad.	Capacity	Graduation	Tolerance ±
CH0341I-BL	CH0341I	10 ml	0.20 ml	0.20 ml
CH0341J-BL	CH0341J	25 ml	0.50 ml	0.34 ml
CH0341K-BL	CH0341K	50 ml	1.00 ml	0.50 ml
CH0341L-BL	CH0341L	100 ml	1.00 ml	1.0 ml
CH0341M-BL	CH0341M	250 ml	2.00 ml	2.00 ml
CH0341N-BL	CH0341N	500 ml	5.00 ml	4.00 ml
CH0341O-BL	CH0341O	1000 ml	10.00 ml	6.00 ml
CH0341P-BL	CH0341P	2000 ml	20.00 ml	12.00 ml

Visit eiscoindustrial.com for a complete listing of all Standard, Class-A, and Class-B Cylinders

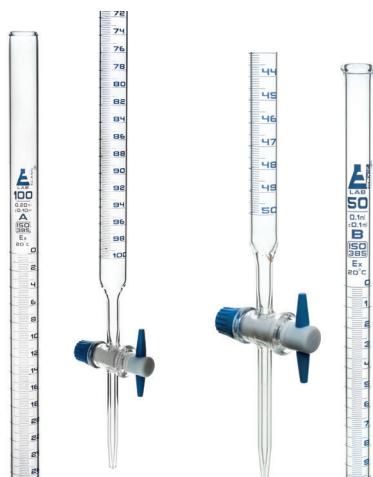


CLASS-A BURETTES WITH GLASS STOPCOCK

Blue Grad.	White Grad.	Capacity	Graduation	Tolerance ±
CH0236A	CH0236A-WT	10 ml	0.05 ml	0.03 ml
CH0236B	CH0236B-WT	25 ml	0.10 ml	0.05 ml
CH0236C	CH0236C-WT	50 ml	0.10 ml	0.05 ml
CH0236D	CH0236D-WT	100 ml	0.20 ml	0.10 ml

CLASS-B BURETTES WITH GLASS STOPCOCK

Blue Grad.	White Grad.	Capacity	Graduation	Tolerance ±
CH0236E	CH0236E-WT	10 ml	0.05 ml	0.05 ml
CH0236F	CH0236F-WT	25 ml	0.10 ml	0.10 ml
CH0236G	CH0236G-WT	50 ml	0.10 ml	0.10 ml
CH0236H	CH0236H-WT	100 ml	0.20 ml	0.20 ml



CLASS-A BURETTES WITH PTFE STOPCOCK

Blue Grad.	White Grad.	Capacity	Graduation	Tolerance ±
CH0240A	CH0240A-WT	10 ml	0.05 ml	0.03 ml
CH0240B	CH0240B-WT	25 ml	0.10 ml	0.05 ml
CH0240C	CH0240C-WT	50 ml	0.10 ml	0.05 ml
CH0240D	CH0240D-WT	100 ml	0.20 ml	0.10 ml

CLASS-B BURETTES WITH PTFE STOPCOCK

Blue Grad.	White Grad.	Capacity	Graduation	Tolerance ±
CH0240E	CH0240E-WT	10 ml	0.05 ml	0.05 ml
CH0240F	CH0240F-WT	25 ml	0.10 ml	0.10 ml
CH0240G	CH0240G-WT	50 ml	0.10 ml	0.10 ml
CH0240H	CH0240H-WT	100 ml	0.20 ml	0.20 ml

Visit eiscoindustrial.com for a complete listing of Burettes



CLEAR REAGENT BOTTLES WITH ACID PROOF PP STOPPER

Code	Capacity	Socket Size
CH0160A	30 ml	14/23
CH0160B	60 ml	14/23
CH0160C	125 ml	19/26
CH0160D	250 ml	19/26
CH0160E	500 ml	24/29
CH0160F	1000 ml	29/32
CH0160G	2000 ml	34/35

REAGENT BOTTLE WITH HOLLOW GLASS STOPPER

Code	Capacity	Socket Size
CH0163A	60 ml	24/29
CH0163B	125 ml	29/32
CH0163C	250 ml	34/35
CH0163D	500 ml	45/40
CH0163E	1000 ml	50/42
CH0163F	2000 ml	55/44



CLEAR REAGENT BOTTLES WITH SCREW CAPS

Code	Capacity
CH0164A	100 ml
CH0164B	250 ml
CH0164C	500 ml
CH0164D	1000 ml
CH0164E	2000 ml

AMBER REAGENT BOTTLES WITH SCREW CAPS

Code	Capacity
CH0165A	100 ml
CH0165B	250 ml
CH0165C	500 ml
CH0165D	1000 ml
CH0165E	2000 ml



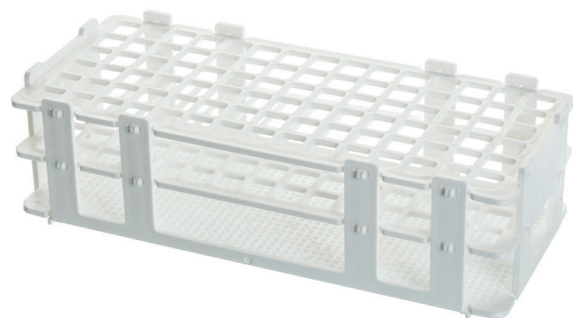
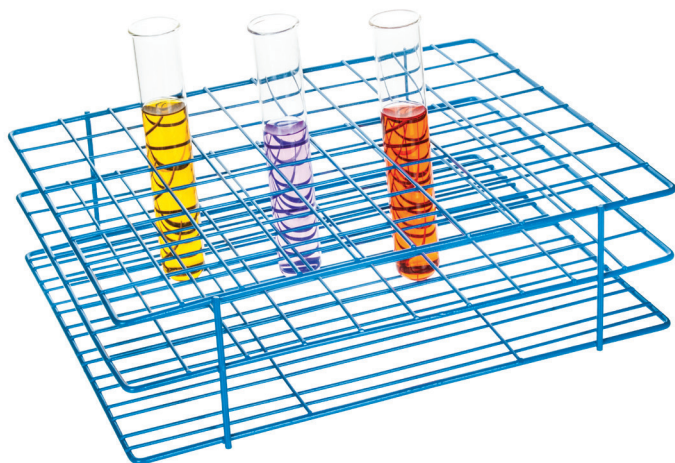
TEST TUBES - LIGHT WALL WITH RIM

Code	Capacity	Length x O.D.	Wall Thickness	Pack Qty
CH0718AA	3 ml	75 x 10 mm	1.0 mm	48
CH0718A/PK48	5 ml	75 x 12 mm	1.0 mm	48
CH0718B/PK48	7 ml	100 x 12 mm	1.0 mm	48
CH0718C/PK48	12 ml	100 x 16 mm	1.2 mm	48
CH0718D01/PK48	15 ml	130 x 15 mm	1.2 mm	48
CH0718D/PK48	15 ml	125 x 16 mm	1.2 mm	48
CH0718E/PK48	20 ml	150 x 16 mm	1.2 mm	48
CH0718F/PK24	25 ml	150 x 18 mm	1.2 mm	24
CH0718F01	30 ml	150 x 20 mm	1.2 mm	24
CH0718G/PK24	50 ml	150 x 24 mm	1.2 mm	24
CH0718G	50 ml	150 x 24 mm	1.2 mm	50
CH0718H	85 ml	250 x 25 mm	1.2 mm	24

TEST TUBES - RIMLESS

Code	Capacity	Length x O.D.	Pack Qty
CH0724A01/PK24	5 ml	100 x 12 mm	24
CH0724A/PK24	5 ml	75 x 16 mm	24
CH0724B01/PK24	10 ml	100 x 16 mm	24
CH0724B/PK24	15 ml	125 x 16 mm	24
CH0724D/PK24	25 ml	150 x 18 mm	24
CH0724E/PK12	30 ml	100 x 25 mm	12
CH0724F/PK12	50 ml	150 x 25 mm	12

Visit eiscoinindustrial.com for additional test tubes and test tube racks



EPOXY COATED TEST TUBE RACKS

Code	Capacity
CH182015A	20 x 15 - 16 mm
CH182015B	24 x 18 - 20 mm
CH182015C	40 x 18 - 20 mm
CH182015D	40 x 20 - 22 mm
CH182015E	36 x 10 - 13 mm
CH182015F	72 x 15 - 16 mm
CH182015G	80 x 18 - 20 mm
CH182015H	80 x 22 - 25 mm

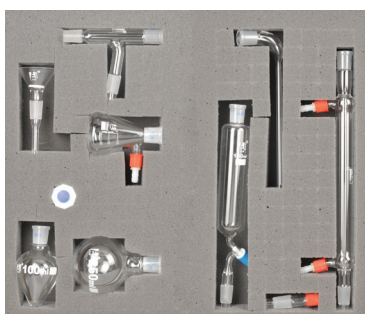
POLYPROPYLENE TEST TUBE STAND, STACKABLE

Code	Capacity
CH0710A	90 x 13 mm tubes
CH0710B	60 x 16 mm tubes
CH0710C	40 x 20 mm tubes
CH0710D	24 x 25 mm tubes
CH0710E	21 x 30 mm tubes

Chemistry Glassware Sets

SET 34 BU ORGANIC CHEMISTRY KIT WITH GRATNELLS CASE - CH0878GT

Item	Socket Size	Joint Size
1 Still head	14/23	19/26
1 Receiver adapter	19/26	24/29
1 Air leak / steam inlet	---	19/26
1 Liebig condenser	19/26	19/26
1 Dropping funnel, 100 ml	19/26	19/26
1 Reduction adapter	19/26	24/29
1 Multiple adapter	19/26	24/29
1 Flask, round bottom, 50 ml	24/29	---
1 Flask, erlenmeyer, 250 ml	24/29	---
1 Flask, round bottom, 250 ml	24/29	---
2 Stopper	---	19/26
1 Thermometer packet	---	14/23
1 Receiver adapter	19/26	---
1 Flask, round bottom, 100 ml	24/29	---
1 Stoppers	----	24/29



SET 46 BU ORGANIC CHEMISTRY KIT - CH0880

This set contains 11 items of 19/26 ground joint. Packed in die-cut foam lined box. Includes:

- 1 Dropping funnel, 100 ml
- 1 Liebig condenser
- 1 Stopper
- 1 Cone / screwcap adapter
- 1 Flask, pear shaped 100 ml
- 1 Filter funnel, 24 mm. dia. perforated plate
- 1 Air leak / steam inlet tube
- 1 Receiver adapter
- 1 Flask, round bottom, 250 ml
- 1 Still head
- 1 Flask, buchner, 100 ml

SIMPLE ORGANIC CHEMISTRY SET – MICRO - CH0881

This set comprises 8 items of 14/23 ground joint. Packed in die-cut foam lined box.

Includes:

- Beaker 25 ml
- Liebig Condenser 100 mm
- Screw cap Adapter
- Pear shaped Flask 25 ml
- Vigrex Column 100 mm
- Still head
- Receiver Adapter
- Thermometer -10 to 110°C



For More Glassware Sets visit eiscoinustrial.com

Distributed by:

NELSON JAMESON
INC.
800-826-8302 nelsonjameson.com