

High Capacity Universal Centrifuge

■ Z446

■ Z446-K



HERMLE
Benchmark



4 x 750 ml

Z446 Z446-K



Specifications

- Maintenance-free induction drive
- Microprocessor with large LCD display
- Motor driven lid lock
- Automatic radio-frequency rotor identification system (RFID) with over speed protection, immediately upon rotor insertion
- Active imbalance identification and cut off (rotor-specific)
- CFC-free refrigeration system
- A large variety of rotors and accessories
- Audible signal at the end of each run with several melody options
- Noise level < 65 dBA (depend on rotor)
- Manufactured according to international safety regulations, i. e. IEC 61010
- Stainless steel chamber

The Z446 universal centrifuge series offers the highest capacity of any benchtop Hermle-Benchmark model. With air-craft grade, premium alloy construction, the 4 x 750ml swing out rotor can withstand centrifugal forces upwards of 4,000 x g with full loads of up to 28 x 50ml or 68 x 15ml tubes. Advanced microprocessor controls allow for instant rotor identification, which automatically converts the rotational speed to the relevant g-force (rcf), preventing the user from setting a speed above the capabilities of the installed rotor. In addition to retrieving saved programs, the easy to use front panel can adjust accel/ decel rates, and change the end of run alarm tone. Rotor exchange is simple and requires less than one minute.

Technical Data

max. speed:	16,000 rpm
max. RCF:	24,325 xg / 26,328 xg
max. volume:	4 x 750 ml
speed range:	200 - 16,000 rpm
Temperature range	
Z446-K:	-20°C to 40°C
Running time:	59 min 50 s / 10 s increments 99 h 59 min / 1 min increments
Dimensions:	
Z446:	21 in x 15 in x 26 in (W x H x D) 54 cm x 39 cm x 67 cm (W x H x D)
Z446-K:	29 in x 15 in x 26 in (W x H x D) 73 cm x 39 cm x 67 cm (W x H x D)
Weight:	
Z446:	174 lbs / 79 kg
Z446-K:	245 lbs / 111 kg
Power input:	
Z446:	640 W
Z446-K:	1,630 W
Order numbers:	Z446, 120 V / 50-60 Hz Z446-E, 230 V / 50-60 Hz Z446-K, 120 V / 50-60 Hz / 15 A Z446-K-E, 230 V / 50-60 Hz / 20 A*

* The speed of rotor Z446-750 lower by 500 rpm
(can be toggled with 20A line)



Distinct Control Panel

- Simple one handed operation
- Easy to program with gloves on
- Foil keyboard
- Permanent indication of preset and actual values
- Selection of speed in both rpm and g-force, with increments of 10
- 10 acceleration and deceleration rates, possibility of unbraked deceleration
- Temperature range from -20°C to 40°C with 1°C increments
- Pre-cooling program
- Standstill cooling
- Pre-selection of the running time from 10 s to 99 h 59 min or continuous
- Storage of up to 99 runs including rotor
- Quick-key for short runs
- Timer: the centrifuge starts at the preselected time

Accessories Z446 and Z446-K

Rotor/Bucket

Order No.:

Z446-750-AC*

Swing out rotor 4 place
Angle: 0-90°

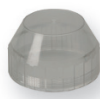


*Z446-750

Swing out rotor with
round buckets included

Z446-750-LID*

PC-Screw cap
for round bucket



Adapter

Order No.:

Z446-750-BUK

Round bucket



Acceleration in s: 47/483
Deceleration in s: 49/1,287
Acceleration in s: 55/551
Deceleration in s: 54/1,501
max. speed: 4,000/4,500 rpm
max. RCF: 3,434/4,346 xg
max. radius: 19.2 cm
Temp. at max. speed: 4°C

Order No.:

Z446-MP-BUK

Rectangular bucket
for Microplates

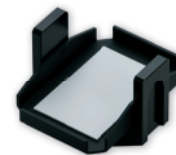


Acceleration in s: 47/483
Deceleration in s: 49/1,287
Acceleration in s: 55/551
Deceleration in s: 54/1,501
max. speed: 4,000/4,500 rpm
max. RCF: 3,130/3,961 xg
max. radius: 17.5 cm
max. loading height: 80 mm
max. loading weight: 640 g
Temp. at max. speed: 4°C

Order No.:

Z446-750-MP

Microplate carrier



Acceleration in s: 47/482
Deceleration in s: 49/1,287
Acceleration in s: 55/551
Deceleration in s: 54/1,501
max. speed: 4,000/4,500 rpm
max. RCF: 2,754/3,486 xg
max. radius: 15.4 cm
max. loading height: 72 mm
max. loading weight: 310 g
Temp. at max. speed: -3°C

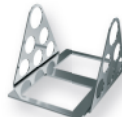
Z446-MP-LID*

PC-Lid
for rectangular bucket



Z446-MP-RA

Removing aid
for rectangular bucket






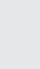
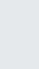




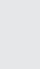
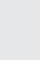


Adapters for rectangular bucket
on request

*hermetically sealable

Z446-MP-STK
Microplate stacking adapter



	Corning®			Corning®		Falcon®	conical	conical			conical	conical	
Volume	750 ml	500 ml	500 ml	250/290 ml	250 ml	175/225 ml	50 ml	50 ml	50 ml	30 ml	15 ml	15 ml	15 ml
ø in mm	99	99	97	62	60	61	29	29	29	26	17	17	17
													
Round bucket													
Length min./max. (mm)	152	114	148	122/137	159	118/137	116	116	102/123	102/123	120	120	97/120
Tubes per rotor	4	4	4	4	4	4	20	28	28	32	56	68 ¹	72
Radius correction (cm)	0	0	0.5	0.2	0.4	0.2	0.2	0.2	0.2	0.2	0.1	0.3	0.5
Order No. Adapter Z446-750	without	without	-A500	-A250	-A250F	-A225	-A50-E	-B50	-A50R	-A30	-A15-E	-B15	-A15R

¹ 2-level

	Vacutainer®			
Volume	1.8-5 ml	4-7 ml	5 ml	6-10 ml
ø in mm	13	13	16	16
Round bucket				
Length min./max. (mm)	75	100	75	100
Tubes per rotor	108	108	72	72
Radius correction (cm)	0.3	0.3	0.3	0.3
Order No. Adapter Z446-750	-A57	-A57	-A10	-A10

Order No.:

Z326-02MP



Swing out rotor 2 x 3 Microplates
Angle: 0-90°

Acceleration in s: 27/251
Deceleration in s: 23/602
max. speed: 4,500 rpm
max. RCF: 2,716 xg
max. radius: 12 cm
max. loading height: 63 mm
max. loading weight: 310 g
Temp. at max. speed: -8°C

Order No.:

BT1500-A1520

BT1500-A05

Z326-MPCA

Tube rack

20 x 1.5 ml (2.0 ml) Tubes

20 x 0.5 ml Tubes

3 x Chamber slide or 35/60 mm petri dish

Order No.:

Z326-3020H



Angle rotor 30 x 1.5/2.0 ml
Angle: 45°

Acceleration in s: 24/218
Deceleration in s: 30/526
max. speed: 15,000 rpm
max. RCF: 23,643 xg
max. radius: 9.4 cm
max. ø: 11 mm
Temp. at max. speed: 1°C

Order No.:

without

without

C1008-A5-6

C1008-A2-6

Tube rack

1 x 2.0 ml

1 x 1.5 ml

1 x 0.5 ml

1 x 0.4/0.2 ml PCR

ø (mm)

11

11

8

6

Length (min./max.)

40

40

45

45

Accessories Z446 and Z446-K

Rotor/Bucket

Order No.:
Z326-0685



Angle rotor 6 x 85 ml
Angle: 38°

Adapter

Acceleration in s: 49/462
Deceleration in s: 46/1,655
Acceleration in s: 69/549
Deceleration in s: 67/1,307
max. speed: 11,000/13,000 rpm
max. RCF: 15,555/21,726 xg
max. radius: 11.5 cm
max. ø: 38 mm
Temp. at max. speed: 8°C

Order No.:	Tube rack	Ø (mm)	Length (min./max.):
without Adapter	1 x 85 ml	38	113
Z326-85-A50R	1 x 50 ml	29	105
Z326-85-A50	1 x 50 ml conical	29	116
Z326-85-A30	1 x 30 ml	25	90/103
Z326-85-A15R	1 x 15 ml	17	103/110
Z326-85-A15	1 x 15 ml conical	17	120

Order No.:
Z326-0485



Angle rotor 4 x 85 ml
Angle: 30°

Acceleration in s: 50/448
Deceleration in s: 45/1,251
Acceleration in s: 61/480
Deceleration in s: 47/1,220
max. speed: 15,000/16,000 rpm
max. RCF: 23,140/26,328 xg
max. radius: 9.2 cm
max. ø: 38 mm
Temp. at max. speed: 7°

Order No.:	Tube rack	Ø (mm)	Length (min./max.):
without Adapter	1 x 85 ml	38	113
Z326-85-A50R	1 x 50 ml	29	105
Z326-85-A50	1 x 50 ml conical	29	116
Z326-85-A30	1 x 30 ml	25	90/103
Z326-85-A15R	1 x 15 ml	17	103/110
Z326-85-A15	1 x 15 ml conical	17	120

Order No.:
Z366-06250



Angle rotor 6 x 250 ml
Angle: 28°

Acceleration in s: 66/573
Deceleration in s: 84/1,871
max. speed: 8,000 rpm
max. RCF: 10,016 xg
max. radius: 14 cm
max. ø: 62 mm
Temp. at max. speed: -1°C

Order No.:	Tube rack	Ø (mm)	Length (min./max.):
without Adapter	1 x 250 ml	62	122
Z366-06250-A50	1 x 50 ml conical	29	118
Z366-06250-A50R	1 x 50 ml	29	103
Z366-06250-A30	2 x 30 ml	26	92
Z366-06250-A15	4 x 15 ml conical	17	120

Order No.:
Z326-0650-HS



Angle rotor 6 x 50 ml (round)
Angle: 26°

Acceleration in s: 28/263
Deceleration in s: 31/922
max. speed: 13,000 rpm
max. RCF: 15,869 xg
max. radius: 8.4 cm
max. ø: 29 mm
Temp. at max. speed: -4°C

Order No.:	Tube rack	Ø (mm)	Length (min./max.):
without Adapter	1 x 50 ml	29	95/115
Z326-50-A30	1 x 30	25	92/95
Z326-50-B15R	1 x 15 ml	17	100/105
Z326-50-A15R	1 x 15 ml conical*	17	120

*only without rotor lid

Order No.:
Z326-2010



Angle rotor 20 x 10 ml
Angle: 30°

Acceleration in s: 32/305
Deceleration in s: 37/984
max. speed: 12,000 rpm
max. RCF: 15,775 xg
max. radius: 9.8 cm
max. ø: 16 mm
Temp. at max. speed: -3°C

Order No.:	Tube rack	ø (mm)	Length (min./max.):
without Adapter	1 x 10 ml	16	80

Order No.:
Z446-04500



Angle rotor 4 x 500 ml
Angle: 24°

Acceleration in s: 73/575
Deceleration in s: 84/2,317
max. speed: 8,000 rpm
max. RCF: 10,367 xg
max. radius: 14.5 cm
max. ø: 69.5 mm
Temp. at max. speed: 4°C

Order No.:	Tube rack	ø (mm)	Length (min./max.):
without Adapter	1 x 500 ml	69.5	165
Z446-500-A250F	1 x 250 ml	62	122
Z446-500-A250	1 x 250 ml conical	60	159
Z446-500-A225	1 x 175 ml Falcon®	61	118
Z446-500-A225	1 x 225 ml Falcon®	61	137
Z446-500-A50	1 x 50 ml conical	29	116
Z446-500-A15C	6 x 15 ml conical	17	120

Order No.:
Z326-1050



Angle rotor 10 x 50 ml conical
Angle: 38°

Acceleration in s: 60/480
Deceleration in s: 68/1,747
Acceleration in s: 61/480
Deceleration in s: 480/1,747
max. speed: 10,000/10,500 rpm
max. RCF: 14,532/16,022 xg
max. radius: 13 cm
max. ø: 29 mm
Temp. at max. speed: 2°C

Order No.:	Adapter	ø (mm)	Length (min./max.):
Z326-50-B15HS	1 x 15 ml RB	17	97/123
Z326-15-A7*	1 x 7 ml	13.5	95/115
Z326-15-A5*	1 x 5 ml	13.5	70/90
Z326-50-A15	1 x 15 ml conical	17	120

*only possible with adapter Z326-50-A15 or Z326-50-B15

Accessories Z446 and Z446-K

Rotor/Bucket		Adaprer			
Order No.: Z326-2420					
		Acceleration in s: 21/204 Deceleration in s: 29/375 max. speed: 16,000 rpm max. RCF: 24,325 xg radius: 8.5 cm max. ø: 11 mm Temp. at max. speed: 1°C			
Order No.: Z326-2420H					
		Acceleration in s: 21/204 Deceleration in s: 29/394 max. speed: 16,000 rpm max. RCF: 24,325 xg radius: 8.5 cm max. ø: 11 mm Temp. at max. speed: 1°C			
Order No.: Z326-3202					
		Acceleration in s: 12/100 Deceleration in s: 12/202 max. speed: 15,000 rpm max. RCF: 15,353 xg max. radius: 6.1 cm max. ø: 6 mm Temp. at max. speed: -2°C			
Angle rotor 4 x 8-PCR Strips					
Order No.: Z326-4420					
		Acceleration in s: 25/235 Deceleration in s: 25/500 max. speed: 16,000 rpm max. RCF: 24,325 xg max. radius: 8.5 cm max. ø: 11 mm Temp. at max. speed: -2°C			
Order No.: Z326-4420					
		Acceleration in s: 25/235 Deceleration in s: 25/500 max. speed: 16,000 rpm max. RCF: 24,325 xg max. radius: 8.5 cm max. ø: 11 mm Temp. at max. speed: -2°C			
Angle rotor 44 x 1.5/2.0 ml Angle: 32°/55°					

More from **HERMLE** **Benchmark**



Z216-M



Z366-K

Distributed by:

NELSON JAMESON INC.

800-826-8302 nelsonjameson.com

www.HermleUSA.com
 PH: 908-769-5555
 EM: info@benchmarkscientific.com

