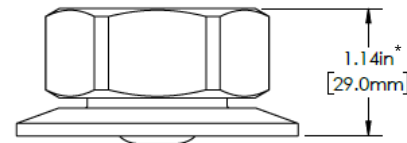
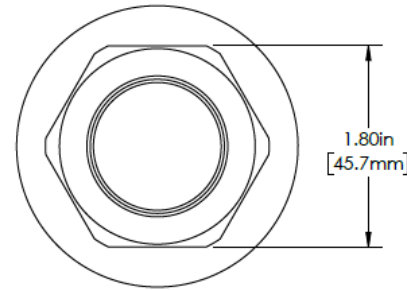


TECHNICAL SPECIFICATIONS

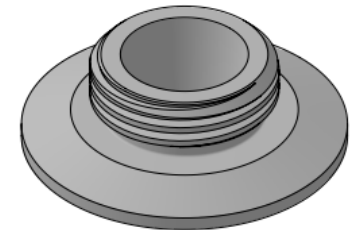
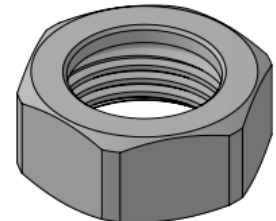
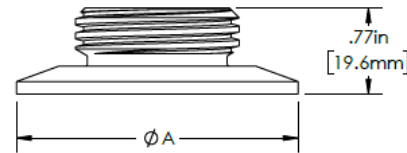
TruStream7 Sanitary Tri-Clamp Inspection Ports (with Hex Nut and Dust Cover)



Material: 316L Stainless Steel / EN 1.4404
Roughness (Internal): Ra ≤ 20 µin. / Ra 0.5 µm.



*Measurement is with septum in place



| Component | Part Number | ASME Diameter (In) / (mm) | DN | A (in) | A (mm) |
|------------|-------------|---------------------------|-----------------|--------|---------|
| TruStream7 | 211125 | 1.5" / 38.1mm | DN 25 / 32 / 40 | 1.984" | 50.5mm |
| | 211129 | 2.0" / 50.8mm | DN 50 | 2.516" | 64.0mm |
| | 211133 | 2.5" / 63.5mm | -- | 3.047" | 77.5mm |
| | 211137 | 3.0" / 76.2mm | DN 65 | 3.579" | 91.0mm |
| | 211145** | 4.0" / 101.6mm | DN 100 | 4.682" | 119.0mm |

**Non-Stock Item

| Component Packaging | Part Number | Length | Width | Height | Shipping Weight |
|---------------------|-------------|-----------------|-----------------|----------------|-----------------|
| TruStream7 | 211125 | 4.75" / 120.7mm | 4.25" / 108.0mm | 2.25" / 57.2mm | 1 lb. / 0.5 kg |
| | 211129 | 4.75" / 120.7mm | 4.25" / 108.0mm | 2.25" / 57.2mm | 1 lb. / 0.5 kg |
| | 211133 | 4.75" / 120.7mm | 4.25" / 108.0mm | 2.25" / 57.2mm | 1 lb. / 0.5 kg |
| | 211137 | 4.75" / 120.7mm | 4.25" / 108.0mm | 2.25" / 57.2mm | 2 lbs. / 0.9 kg |
| | 211145** | 9.50" / 241.3mm | 9.25" / 235.0mm | 2.50" / 63.5mm | 2 lbs. / 0.9 kg |

**Non-Stock Item



MKTG-400-19REVA11/2020

Distributed by:



800-826-8302 nelsonjameson.com