

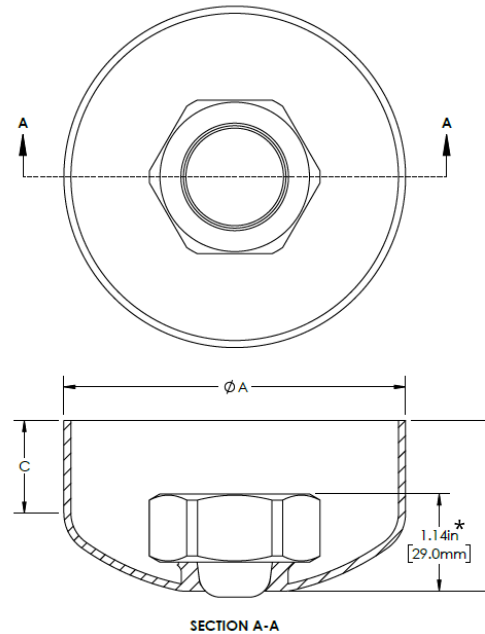
# TECHNICAL SPECIFICATIONS

## TruStream7 Sanitary Recessed Inspection Ports (with Hex Nut and Dust Cover)

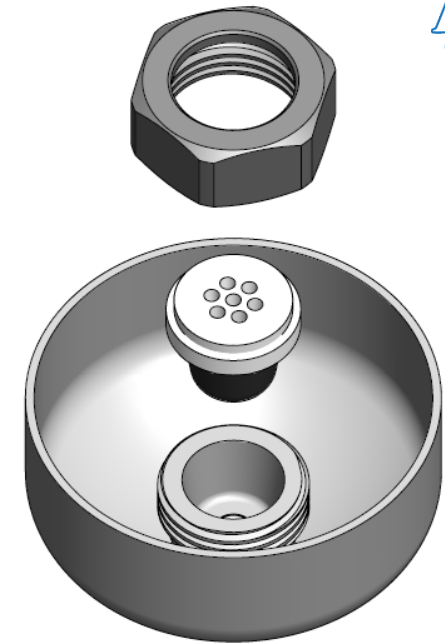


Material: 316L Stainless Steel / EN 1.4404  
Roughness (Internal): Ra ≤ 20 µin. / Ra 0.5 µm.

Visit our website for instructions on:  
[Welding Instructions](#)



\*Measurement is with septum in place



Component	Part Number	A	B	C
TruStream7	212123	4.00" / 101.6mm	2.0" / 50.8mm	1.1" / 27.9mm
	212127	4.00" / 101.6mm	4.0" / 101.6mm	3.1" / 78.7mm
	212133	5.56" / 141.2mm	4.0" / 101.6mm	2.6" / 66.0mm
	212135**	5.56" / 141.2mm	5.0" / 127.0mm	3.6" / 91.4mm

\*\*Non-Stock Item

Component Packaging	Part Number	Length	Width	Height	Shipping Weight
TruStream7	212123	9.5" / 241.3mm	9.25" / 235.0mm	2.5" / 63.5mm	2 lbs. / 0.9 kg
	212127	TBD	TBD	TBD	TBD
	212133	9.5" / 241.3mm	9.25" / 235.0mm	6" / 152.4mm	5 lbs. / 2.3 kg
	212135**	TBD	TBD	TBD	TBD

\*\*Non-Stock Item



Distributed by:

