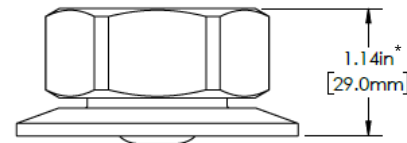
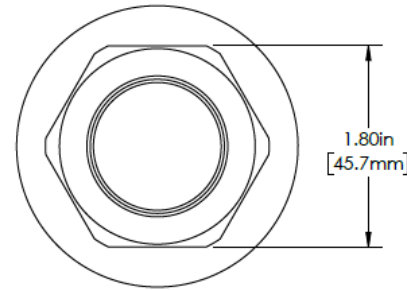


TECHNICAL SPECIFICATIONS

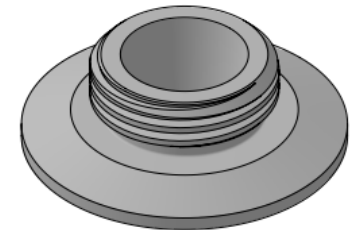
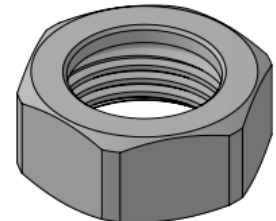
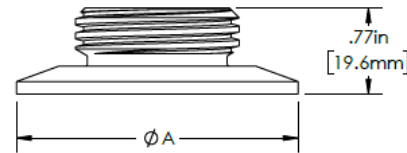
TruStream7 Sanitary Tri-Clamp Inspection Ports (with Hex Nut and Dust Cover)



Material: 316L Stainless Steel / EN 1.4404
Roughness (Internal): Ra ≤ 20 µin. / Ra 0.5 µm.



*Measurement is with septum in place



Component	Part Number	ASME Diameter (In) / (mm)	DN	A (in)	A (mm)
TruStream7	211125	1.5" / 38.1mm	DN 25 / 32 / 40	1.984"	50.5mm
	211129	2.0" / 50.8mm	DN 50	2.516"	64.0mm
	211133	2.5" / 63.5mm	--	3.047"	77.5mm
	211137	3.0" / 76.2mm	DN 65	3.579"	91.0mm
	211145**	4.0" / 101.6mm	DN 100	4.682"	119.0mm

**Non-Stock Item

Component Packaging	Part Number	Length	Width	Height	Shipping Weight
TruStream7	211125	4.75" / 120.7mm	4.25" / 108.0mm	2.25" / 57.2mm	1 lb. / 0.5 kg
	211129	4.75" / 120.7mm	4.25" / 108.0mm	2.25" / 57.2mm	1 lb. / 0.5 kg
	211133	4.75" / 120.7mm	4.25" / 108.0mm	2.25" / 57.2mm	1 lb. / 0.5 kg
	211137	4.75" / 120.7mm	4.25" / 108.0mm	2.25" / 57.2mm	2 lbs. / 0.9 kg
	211145**	9.50" / 241.3mm	9.25" / 235.0mm	2.50" / 63.5mm	2 lbs. / 0.9 kg

**Non-Stock Item



MKTG-400-19REVA11/2020

Distributed by:



800-826-8302 nelsonjameson.com