

Metal Detectable *products*

Maximize food safety in your plant—use Metal Detectable Products from Nelson-Jameson



Bandages	32
Beard Covers	30
Cable Ties	26
Calculators	11
Calibration Tools	14, 15
Card Holders	10
Clipboards	12, 13
Cutlery	17
Dry Erase Markers	9
Earplugs	28, 29
Gaskets	22
Gloves	31
Hairnets	30
Highlighters	8
Knobby Mats	13
Mallets	21
Measuring Cup	19
Meat & Food Markers	9
Paper	11
Paper Clips	10
Pencil	6
Pens	4, 5, 6, 7
Permanent Markers	8, 9
Pump Kits	23
Safety Knives	24, 25
Scissors	11
Scoops	18, 19
Scrapers	20, 21
Shoe Covers	31
Shovels	19
Sleeve Protectors	31
Stapler	10
Stopwatch & Timer	11
Storage Trays	19
Tags	26
Tape Measures	21

Detection of contaminants is a key part of food safety. Increasingly demanding government regulations continue to fuel the importance of using metal detectors and x-ray machines to detect and reject harmful and intrusive objects. These objects can damage equipment, cause injury, or result in a recall if your product has reached the end user. Using metal detectable or x-ray visible items in conjunction with guidelines can drastically reduce the likelihood of anything contaminating your product.

If you use metal detectors or x-ray equipment at your facility, we can help enhance your HACCP and GMP programs with our wide line of metal detectable and x-ray visible products. From safety supplies to processing tools, we can help ensure your product's integrity.

X-RAY VISIBLE

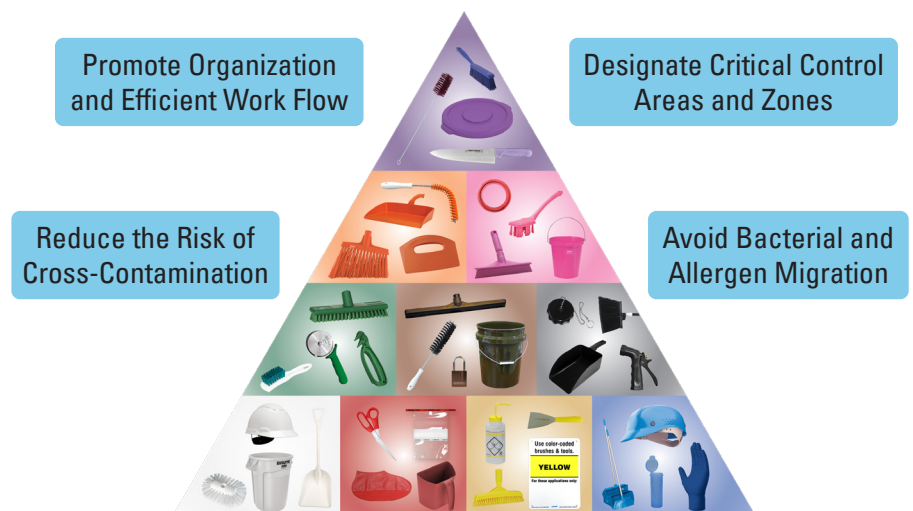
X-Ray machines have an advantage over metal detectors in that they can detect a wider range of foreign bodies. As the x-ray passes through the food product, anything in it that is denser than the product will make a change in the detection. There are limitations to what an x-ray machine can detect including plastic (that isn't metal detectable), hair, and insects.

BRC COMPLIANT

BRC is a globally recognized third party certification program trusted by company's worldwide. BRC has a highly experienced technical team that provides support and answers technical questions. All products from Detectamet are BRCGS compliant.

WHY COLOR-CODE?

A complete color-coded system helps promote organization and efficient workflow. Designating critical control areas and zones helps your sanitation program by ensuring that the tools stay in the areas in which they are meant to be used, doing jobs they are meant to do. Color-Coded systems also help avoid bacterial and allergen migration within a facility, allowing you to maintain a safe food processing facility. We have a variety of Color-Coded, Metal Detectable products available throughout this flyer.





GENERAL ENVIRONMENTS

Solution: Detectamet's pens are ergonomically designed for long periods of use.



FREEZING ENVIRONMENTS

Solution: Cryo pens can write in extreme low temperatures down to -20°C (-4°F) in areas such as cold stores.



POWDERED ENVIRONMENTS

Solution: Detectamet has developed a cryo pen that avoids clogging up and will continue to write. This is most useful in mills and bakeries.



CHILLED ENVIRONMENTS

Solution: We have gel and cryo pens that works in low temperatures ideal for use in chilled areas.



WET/DAMP ENVIRONMENTS

Solution: The specially developed Detectamet cryo ink refill that won't smear when used in damp areas.



ENCLOSED ENVIRONMENTS

Solution: For tight environments you need a pen that can write at unusual angles which our cryo pens can achieve.



REFILLABLE

This pen can be refilled from our ink selection.

Detectamet's metal detectable pens are produced from a specially formulated food contact approved polymer that combines metal and x-ray detectability. The pen bodies are flexible and shatterproof making them ideal for use in food processing plants to help achieve safety and compliance.

Choosing a pen is dependent on the type of facility you have. To make this choice easier, we have included icons in our flyer that correlate to the type of facility each ink will work best in. Using the icons on the left, you can match your plant's environment to the pen(s) that will work best for you.

You will also notice for each pen, whether it can be refilled using one of our refillable pen cartridges. Refilling your pens is a great way to save money and time by having a new ink cartridge ready when you need it.

OPTIONAL COLORS AVAILABLE:

Not available for all pen configurations, call us for details.

Pen Housing Colors:

- White
- Black
- Red
- Orange
- Yellow
- Pink
- Blue
- Purple
- Green

Ink Colors:

- Red
- Blue
- Green
- Black

BODY STYLES



WITH CLIP



WITH LANYARD



WITHOUT CLIP

RETRACTABLE ELEPHANT PENS

- Slightly textured finish and triangular cross section for a comfy yet sturdy grip that is suitable for use in most environments.
- Manufactured from food contact approved materials.
- Ink and pen housing are the same color.
- Refills available—see page 5.
- 25/box.

X-RAY VISIBLE!

STANDARD INK

- Performs well in ambient working temperatures, and a clean environment.



Stock #	Color	Unit
With Clip		
364-2456	Red	EA
364-2450	Blue	EA
364-2459	Green	EA
364-2453	Black	EA
Without Clip		
364-2455	Red	EA
364-2351	Blue	EA
364-2458	Green	BX
364-2452	Black	EA
With Lanyard Attachment		
364-2457	Red	EA
364-2451	Blue	EA
364-2460	Green	EA
364-2454	Black	EA



PRESSURIZED 'CRYO' INK

- Suitable for wet, greasy, and powdery environments.
- Will write upside down where ordinary ballpoint pens fail.
- Continues to write in sub-zero temperatures as low as -20°C.
- Red cap to distinguish from other pens.



Stock #	Color	Unit
With Clip		
364-7282	Blue	BX
364-7285	Black	EA
Without Clip		
364-7283	Blue	EA
364-7286	Black	EA
With Lanyard Attachment		
364-7284	Blue	BX
364-7287	Black	EA



GEL INK

- Suitable for cold environments.
- Refill incorporates a stainless steel tip, tough carbon steel ball, and nickel silver tube ensuring easy ink flow when writing in cold conditions.
- White cap to distinguish from other pens.

Stock #	Color	Unit
With Clip		
364-7290	Blue	EA
364-7293	Black	EA
Without Clip		
364-7291	Blue	EA
364-7294	Black	EA
With Lanyard Attachment		
364-7292	Blue	EA
364-7295	Black	EA



ELEPHANT STICK PEN

- Ideal for use in ambient working temperatures and a clean environment, or where a one piece pen is required.
- Triangular cross section for a comfy yet sturdy grip.
- Ink and pen housing are the same color.
- Not refillable.
- 50/box.

Stock #	Color	Unit
With Clip		
364-2469	Red	EA
364-2463	Blue	EA
364-2472	Green	EA
364-2466	Black	EA
Without Clip		
364-2468	Red	EA
364-2461	Blue	EA
364-2471	Green	EA
364-2465	Black	EA
With Lanyard Attachment		
364-2470	Red	EA
364-2464	Blue	EA
364-2473	Green	EA
364-2467	Black	EA



RETRACTABLE HD PENS

- Slightly textured finish is suitable for most food-related environments, including those with greasy and powdery conditions.
- Retractable housing with stainless steel return spring mechanism provides continuous performance.
- Ink and pen housing are the same color.
- Refills available—see below.
- 50/box.

X-RAY VISIBLE!

STANDARD INK

- Performs well in ambient working temperatures, and a clean environment.



Stock #	Color	Unit
With Clip		
364-2362	Red	BX
364-2360	Blue	EA
364-2363	Green	EA
364-2361	Black	EA
Without Clip		
364-2366	Red	EA
364-2364	Blue	EA
364-2367	Green	EA
364-2365	Black	EA
With Lanyard Attachment		
364-2370	Red	EA
364-2368	Blue	EA
364-2371	Green	EA
364-2369	Black	EA



GEL INK

- Suitable for cold environments.
- Refill incorporates a stainless steel tip, tough carbon steel ball, and nickel silver tube ensuring easy ink flow when writing in cold conditions.
- White cap to distinguish from other pens.

Stock #	Color	Unit
With Clip		
364-6002	Red	EA
364-6000	Blue	EA
364-6003	Green	EA
364-6001	Black	EA
Without Clip		
364-6006	Red	EA
364-6004	Blue	EA
364-6007	Green	EA
364-6005	Black	EA
With Lanyard Attachment		
364-6010	Red	EA
364-6008	Blue	EA
364-6011	Green	EA
364-6009	Black	EA



PRESSURIZED 'CRYO' INK

- Suitable for wet and greasy environments.
- Will write upside down where ordinary ballpoint pens fail.
- Continues to write in sub-zero temperatures as low as -20°C.
- Red cap to distinguish from other pens.

Stock #	Color	Unit
With Clip		
364-7262	Blue	EA
364-7263	Black	EA
With Lanyard Attachment		
364-7260	Blue	EA
364-7261	Black	EA



INK REFILLS FOR RETRACTABLE PENS

- 100/box.

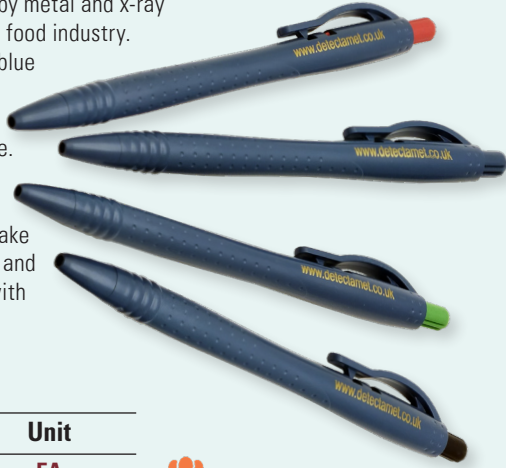
Stock #	Color	Unit
Standard Ink		
364-7174	Red	BX
364-7077	Blue	EA
364-7141	Green	BX
364-7086	Black	EA
Gel Ink		
364-7182	Red	BX
364-7181	Blue	EA
364-7218	Green	BX
364-7087	Black	EA
Pressurized 'Cryo' Ink		
364-7183	Blue	EA
364-2968	Black	EA



ECONOMY RETRACTABLE PEN

X-RAY VISIBLE!

- Designed to satisfy the basic requirements for performance and detectability by metal and x-ray monitoring systems used in the food industry.
- Produced with a food contrast blue plastic shell.
- Choose red, blue, green, or black ink in a standard cartridge.
- The color of the end cap matches the ink.
- Ridges at the point of grip to make pen easier to hold firmly in wet and greasy work environments or with gloved hands.
- Pens are 50/box.
- Ink refills are 100/box.



Stock #	Color	Unit
364-7266	Red	EA
364-7264	Blue	EA
364-7267	Green	EA
364-7265	Black	EA



Detectamet
MANUFACTURING DETECTABLE FOOD SAFETY,
OFFICE & PROFESSIONAL CLEANING PRODUCTS

Ink Refills for Economy Retractable Pen

364-7185	Red	BX
364-7184	Blue	EA
364-7632	Green	BX
364-2954	Black	EA

LONGEST WRITING PEN

- Writes up to 7.8 miles.
- 0.6 mm tip for fine controlled writing.
- Blue housing.
- 10/pack.



Detectamet
MANUFACTURING DETECTABLE FOOD SAFETY,
OFFICE & PROFESSIONAL CLEANING PRODUCTS

Stock #	Color	Unit
With Clip		
364-7761	Blue	PK
364-7762	Black	PK



4 IN 1 MULTI COLOR PEN

- Red, green, black, and blue ink colors in one pen.
- All inks are retractable.
- 10/pack.



Stock #	Color	Unit
364-7408	Blue	PK



Detectamet
MANUFACTURING DETECTABLE FOOD SAFETY,
OFFICE & PROFESSIONAL CLEANING PRODUCTS

TOUCH SCREEN PEN

- Touch screen stylus with a twist action retractable ballpoint pen on opposite end.
- Durable and responsive tip.
- Compatible with devices such as Android phones and tablets as well as devices with a capacitive touch screen like the iPhone® and iPad®.
- Blue/silver.
- 10/pack.



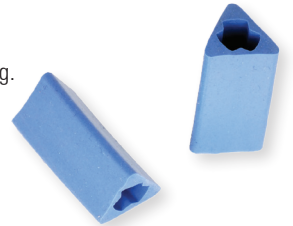
Detectamet
MANUFACTURING DETECTABLE FOOD SAFETY,
OFFICE & PROFESSIONAL CLEANING PRODUCTS

Stock #	Description	Unit
364-7198	2-in-1 Touch Screen Pen	EA



DETECTAGRIP PEN SLEEVE

- Stops pens and other instruments from rolling.
- Ergonomically designed for ease of writing.
- Blue.
- 10/pack.



Stock #	Unit
364-7083	EA

Detectamet
MANUFACTURING DETECTABLE FOOD SAFETY,
OFFICE & PROFESSIONAL CLEANING PRODUCTS

MECHANICAL PENCIL

- Stylish blue and silver metal case with pocket clip is fully detectable.
- Safe to use in all areas of your facility.
- Accepts 0.5 mm lead refills.
- 10/pack.
- Lead refill is 10 pieces/unit; 10 units/pack.

Stock #	Unit
364-2943	PK
Replacement Lead	
364-2944	PK



X-RAY VISIBLE!

PDA STYLUS

- Safe to use on delicate and expensive PDA screens.
- Non-scratching.
- Reinforced pocket clip for added security.
- 10/pack.

Stock #	Unit
364-2970	EA



Detectamet
MANUFACTURING DETECTABLE FOOD SAFETY,
OFFICE & PROFESSIONAL CLEANING PRODUCTS



Detectamet
MANUFACTURING DETECTABLE FOOD SAFETY,
OFFICE & PROFESSIONAL CLEANING PRODUCTS

METAL FOOD FACTORY STICK PEN

- Made using two different types of metal to offer magnetic and metal detectable/x-ray visible qualities.
- Ideal for use in ambient working temperatures and a clean environment.
- Also available with gel, pressurized cryo, or fine tip ink for other environments—call us for more information.
- 50/box.

X-RAY VISIBLE!



Stock #	Ink Color	Unit
With Clip		
364-7196	Red	EA
364-7030	Blue	EA
364-7197	Green	EA
364-7134	Black	EA

Stock #	Ink Color	Unit
Without Clip		
364-7220	Red	BX
364-7142	Blue	EA
364-7221	Green	EA
364-7084	Black	EA

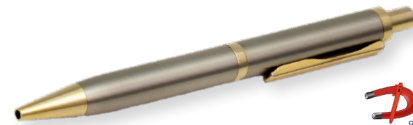
Stock #	Ink Color	Unit
With Attachment Ring		
364-7206	Red	EA
364-7205	Blue	EA
364-7208	Green	EA
364-7140	Black	EA

Stock #	Ink Color	Unit
Ink Refills for Metal Food Factory Pen		
364-7174	Red	BX
364-7077	Blue	EA
364-7141	Green	BX
364-7086	Black	EA



STAINLESS STEEL AND BRASS RETRACTABLE PENS

- Stainless steel and brass body is suitable for a range of food related environments.
- Refills available—see page 5.



STANDARD INK

- Performs well in ambient working temperatures, and a clean environment.
- 10/pack.

Stock #	Ink Color	Unit
With Pocket Clip		
364-7298	Red	EA
364-7297	Blue	EA
364-7299	Green	EA
364-7296	Black	PK



GEL INK

- Suitable for cold environments.
- Refill incorporates a stainless steel tip, tough carbon steel ball, and a nickel silver tube ensuring easy ink flow when writing in cold conditions.
- 10/pack.

Stock #	Ink Color	Unit
With Pocket Clip		
364-7342	Red	EA
364-7341	Blue	BX
364-7343	Green	EA
364-7340	Black	EA



PRESSURIZED 'CRYO' INK

- Suitable for wet and greasy environments.
- Will write upside down where ordinary ballpoint pens fail.
- Continues to write in sub-zero temperatures as low as -20°C.
- 10/pack.

Stock #	Ink Color	Unit
With Pocket Clip		
364-7346	Blue	EA
364-7345	Black	EA



STAINLESS STEEL RETRACTABLE PENS

- Retractable stainless steel housing offers extra protection for the pen refill and the operator, ensuring the nib will not become damaged if the pen is dropped or rolls off work surfaces.
- Stainless steel housing will hold up in the most adverse conditions.
- Refills available—see page 5.



STANDARD INK

- Ideal for use in ambient working temperatures, and a clean environment.
- 10/pack.

Stock #	Ink Color	Unit
With Pocket Clip		
364-2354	Red	EA
364-2353	Blue	EA
364-2355	Green	EA
364-2352	Black	BX



GEL INK

- Developed for cold environments, this product offers outstanding writing characteristics.
- Refill incorporates a stainless steel tip, tough carbon steel ball, and a nickel silver tube ensuring easy ink flow when writing in cold conditions.
- 10/pack.

Stock #	Ink Color	Unit
With Pocket Clip		
364-2357	Red	PK
364-2356	Blue	EA
364-7742	Black	EA



X-RAY VISIBLE!**RETRACTABLE PERMANENT MARKER**

- Ideal for food processing environments—no cap to lose.
- Non-toxic, xylene-free, low odor permanent ink.
- Patented retractable housing prevents marker from drying out.
- Choose chisel tip for broad and fine line writing or bullet tip for bold writing.
- Store horizontally.
- Retract using push button on end of marker.
- Blue housing.
- 10/pack.

Stock #	Ink Color	Unit
Chisel Tip		
364-7304	Red	EA
364-7303	Blue	EA
364-7305	Green	EA
364-7302	Black	EA
Bullet Tip		
364-2977	Red	EA
364-2978	Blue	EA
364-2880	Green	EA
364-2976	Black	EA

X-RAY VISIBLE!**PERMANENT MARKER**

- High-impact blue housing and cap is fully metal detectable, x-ray visible, and antimicrobial.
- Non-toxic, xylene-free, low-odor ink.
- Choose chisel tip for broad and fine line writing or bullet tip for bold writing.
- 10/pack.

Stock #	Ink Color	Unit
Chisel Tip		
364-7149	Red	PK
364-7147	Blue	PK
364-7151	Green	EA
364-7148	Black	EA
Bullet Tip		
364-2973	Red	PK
364-2971	Blue	EA
364-2975	Green	EA
364-2974	Black	EA

X-RAY VISIBLE!**HIGHLIGHTER MARKER**

- Mark graphs and charts in your processing areas.
- High-impact blue housing and snug fitting cap is fully metal detectable, x-ray visible, and antimicrobial.
- Non-toxic, xylene-free, low-odor ink.
- 10/pack.

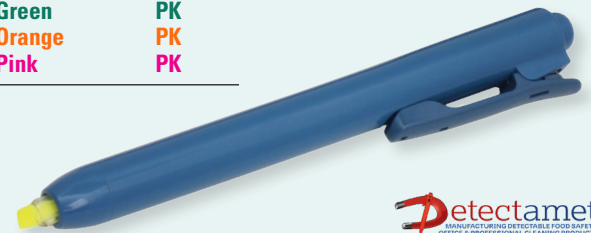
Stock #	Ink Color	Unit
364-2981	Yellow	EA
364-2983	Blue	EA
364-2979	Green	EA
364-2980	Orange	PK
364-2982	Pink	EA

RETRACTABLE HIGHLIGHTER MARKER

- Perfect for food processing areas where detectability is crucial in case of loss.
- Non-toxic, xylene-free, low-odor ink.
- Easy, one-handed use—no cap to lose.
- Store horizontally.
- Retract using push button on end of marker.
- Blue housing is fully metal detectable.
- 10/pack.

X-RAY VISIBLE!

Stock #	Ink Color	Unit
364-2994	Yellow	EA
364-2990	Blue	PK
364-2991	Green	EA
364-2993	Orange	EA
364-2992	Pink	PK
Ink Refills		
364-2254	Yellow	PK
364-2250	Blue	PK
364-2251	Green	PK
364-2253	Orange	PK
364-2252	Pink	PK



FINE TIP PERMANENT MARKER

- Metal detectable, x-ray visible, and antimicrobial.
- Most suited for writing on labels and shiny/greasy paper. Performs well in cold and frozen applications with a temperature range of -4° to 140°F.
- Cap is made of metal detectable plastic and has a magnetic clip attached for extra security.
- Please note that due to the nature of the ink used, without the cap the ink will dry out.
- Store horizontally.
- Blue housing.
- 10/pack.



X-RAY VISIBLE!

Stock #	Ink Color	Unit
364-2946	Red	EA
364-2969	Blue	EA
364-2947	Green	PK
364-2966	Black	EA



DRY ERASE MARKER

- High-impact blue housing and snug-fitting cap is x-ray visible, metal detectable, and antimicrobial.
- Non-toxic, xylene-free, low-odor ink.
- Store horizontally.
- 10/pack.

X-RAY VISIBLE!



Stock #	Ink Color	Unit
364-2988	Red	EA
364-2987	Blue	EA
364-2989	Green	EA
364-2984	Black	EA

RETRACTABLE DRY ERASE MARKER

- Non-toxic, xylene-free, low-odor ink.
- Easy, one-handed use—no cap to lose.
- Blue housing is fully metal detectable.
- Store horizontally.
- Retract using push button on end of marker.
- 10/pack.

X-RAY VISIBLE!



Stock #	Ink Color	Unit
Chisel Tip		
364-7310	Red	EA
364-7309	Blue	EA
364-7311	Green	EA
364-7308	Black	EA
Bullet Tip		
364-7306	Red	EA
364-7307	Blue	EA
364-7300	Green	EA
364-7160	Black	EA

MEAT AND FOOD MARKERS

- Ink is safe for food contact.
- Meat marker is best used with carcasses.
- Food marker can be used with all foods, most common use is with cheese.
- Quick dry ink prevents the colors from bleeding.
- Blue housing.
- 10/pack.



Stock #	Ink Color	Unit
Meat Marker		
364-2561	Red	PK
364-2560	Blue	PK
Food Marker		
364-2486	Red	PK
364-2485	Blue	PK
364-7775	Black	PK

Permanent and dry erase markers work great with tags on page 26.



MARKER PEN HOLDER

- Designed to hold up to 4 marker pens and has space for a whiteboard eraser.
- Blue.
- 7”H x 9”W.
- Markers sold separately.



Stock #	Description	Unit
364-2377	Without Clip	EA
364-2378	With Clip	EA



NEW COLORS
AVAILABLE

X-RAY VISIBLE!



 Detectamet
MANUFACTURING DETECTABLE FOOD SAFETY,
OFFICE & PROFESSIONAL CLEANING PRODUCTS

CARD HOLDER

- Sturdy holders are metal detectable and x-ray visible.
- Lanyard attachment points allow the holders to be used either vertically or horizontally.
- Holds standard size cards up to 2.17" x 3.42".
- 25/pack.

Stock #	Color	Unit
364-2300	Light Gray	PK
364-2301	Red	EA
364-2302	Yellow	EA
364-2303	Blue	EA
364-2304	Green	EA
364-7434	Black	PK
364-2305	Orange	PK
364-7435	Pink	PK
364-2306	Purple	EA

BEADED SAFETY CHAINS & SPLIT RINGS

- Secure pens, clips or other metal detectable products to equipment or work areas.
- Split rings are 20 mm/0.78" diameter and can be attached on either or both ends of the safety chains.
- 10/pack.



Stock #	Description	Unit
364-2350	30" Beaded chain	PK
364-7268	Split rings	PK

 Detectamet
MANUFACTURING DETECTABLE FOOD SAFETY,
OFFICE & PROFESSIONAL CLEANING PRODUCTS
RETRACTABLE BADGE/KEY
LANYARD

- Back clip attaches easily to your clothing.
- Strong nylon cord extends up to 27.5".
- 4/pack.



Stock #	Unit
364-2942	PK

 Detectamet
MANUFACTURING DETECTABLE FOOD SAFETY,
OFFICE & PROFESSIONAL CLEANING PRODUCTS

STAPLELESS STAPLER

- Cut down the risk of contamination associated with loose staples in a food processing area.
- Blue transparent ABS stapler slits and clips up to 5 sheets of paper together safely and securely without staples.
- 5/pack.



Stock #	Unit
364-2348	EA

 Detectamet
MANUFACTURING DETECTABLE FOOD SAFETY,
OFFICE & PROFESSIONAL CLEANING PRODUCTS

NEW

LANYARD

- Breakaway safety feature.
- Only the hook is metal detectable.
- 10/pack.



Stock #	Color	Unit
364-7483	Light Gray	PK
364-7479	Red	PK
364-7480	Yellow	PK
364-7487	High-Vis Yellow	PK
364-7481	Blue	PK
364-7482	Green	PK
364-7484	Orange	PK
364-7488	High-Vis Orange	PK
364-7486	Purple	PK



 Detectamet
MANUFACTURING DETECTABLE FOOD SAFETY,
OFFICE & PROFESSIONAL CLEANING PRODUCTS

X-RAY VISIBLE!

PLASTIC PAPER CLIP

- Eliminate the need for staples throughout your processing area.
- Metal detectable, x-ray visible and antimicrobial.
- Extra large 3" x 1.5" paper clips can hold up to 40 sheets of paper each.
- Use with a safety chain for added security.

Stock #	Color	Unit
364-7041	Red	EA
364-7040	Yellow	EA
364-7039	Blue	EA
364-7042	Green	PK



 Detectamet
MANUFACTURING DETECTABLE FOOD SAFETY,
OFFICE & PROFESSIONAL CLEANING PRODUCTS

PLASTIC STOPWATCH

- Provides precise timing for all your test procedures in all types of environments including greasy, powdery, or cold conditions.
- Made from high-impact, non-shattering plastic material so it will not easily damage if dropped.
- Compact and lightweight, measuring 3" x 2".
- Includes a 30" beaded chain for convenient attachment to a clipboard or lab cabinet.
- Features hour/minutes/seconds, 1/100th of second, day/date and month and alarm time settings.



Stock #	Unit
364-7048	EA

DIGITAL PROCESS TIMER

- Time in seconds or minutes.
- 4 button design includes: Reset, Start/Stop, Minute and Second Button.
- Magnetic or self-standing.
- Measures 3.0625"W x 2.625"H.
- Large and easy to read LCD display.
- Requires (1) AAA battery (not included).



Stock #	Unit
364-7753	EA

SCISSORS

- General purpose for use in the office, production area, or warehouse.
- Blades are stainless steel.
- Handle is metal detectable.



Stock #	Unit
364-7726	EA

HANDHELD CALCULATOR

X-RAY VISIBLE!

- High-impact blue housing and buttons are metal detectable, x-ray visible, and antimicrobial.
- Suitable for most food environments including greasy, powdery, and cold conditions.
- Lightweight and small enough to hold in your hand or attach to a clipboard.
- Includes (2) AAA batteries.
- Features a % and mark up key.
- Measures 3" x 4.25".



Stock #	Display	Unit
With 30" Safety Chain		
364-7044	8 Digit	EA
Without Safety Chain		
364-7211	8 Digit	EA



X-RAY VISIBLE!

DESKTOP CALCULATOR

- Metal detectable, x-ray visible, and antimicrobial high-impact blue housing will not damage easily if dropped.
- Suitable for most food environments including greasy, powdery, and cold conditions.
- Big display buttons, including % and mark up key.
- Automatic power off.
- Solar powered.
- Measures 4.25" x 6".

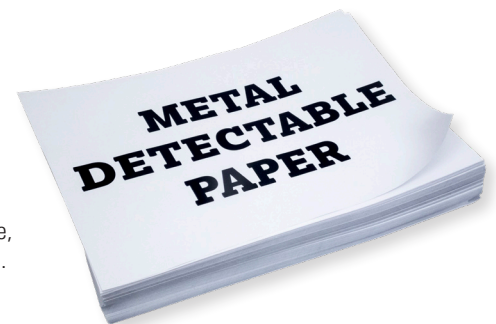


Stock #	Display	Unit
364-7810	12 Digit	EA

NEW

PAPER

- Tear, water, oil, grease, and weather resistant.
- 8-1/2"W x 11"L.
- 100 sheets/case.



Stock #	Color	Unit
364-7427	White	PK



Chrome Plated Economy Clip

Stainless Steel Economy Clip

HD Stainless Steel Clip

X-RAY VISIBLE!



STAINLESS STEEL CLIPBOARD

- Includes heavy-duty stainless steel clip.
- Manufactured from top quality stainless steel.
- Other sizes and clip options available. Call for details.

Stock #	Size	Unit
364-7049	9" x 12.5"	EA
364-7051	14" x 18"	EA



PLASTIC CLIPBOARD

- Metal detectable and x-ray visible.
- Ideal for production area environments.
- Comfortable to hold, even in cold environments.
- Blue.

Stock #	Clip Style	Unit
7" x 9"		
364-7236	Chrome Plated Economy	EA
364-7235	Stainless Steel Economy	EA
364-7234	HD Stainless Steel	EA
9" x 12.5"		
364-7233	Chrome Plated Economy	EA
364-7232	Stainless Steel Economy	EA
364-7038	HD Stainless Steel	EA
13.5" x 18"		
364-7193	Chrome Plated Economy	EA
364-7192	Stainless Steel Economy	EA
364-7191	HD Stainless Steel	EA



Personalize your clipboard or clips by having your company name or sequential numbers engraved. Call us for details.

Any plastic clipboard can be customized by choosing from a range of colors, clips, ring binder mechanisms and hanging hooks.

Call us for details.



CLIPBOARD CLIP

- Made from stainless steel, chrome, or zinc plated steel.
- Durable and lightweight.

Stock #	Description	Unit
364-7043	HD Stainless Steel Clip—2.75" x 5.75"	EA
364-7186	Stainless Steel Economy Clip—1.25" x 4.75"	EA
364-7194	Chrome Plated Economy Clip—1.25" x 4.75"	EA
364-7199	Zinc Plated Pen Holder Clip—1.25" x 4.75"	EA



MAGNETIC CLIPBOARD

- Lightweight.
- Portrait orientation.
- Chrome Plated Economy Clip, other clips available upon request.
- Clip color matches the color of the clipboard.
- Strong magnets on back of board.
- Other sizes and clip options available. Call for details.

X-RAY VISIBLE!



Stock #	Color	Unit
16.5" L x 11.75" W		
364-7782	White	EA
364-7781	Red	EA
364-7783	Yellow	EA
364-7777	Blue	EA
364-7778	Green	EA
364-7776	Black	EA
364-7779	Orange	EA
364-7784	Pink	EA
364-7780	Purple	EA

Stock #	Color	Unit
11.75" L x 8.25" W		
364-7791	White	EA
364-7790	Red	EA
364-7792	Yellow	EA
364-7786	Blue	EA
364-7787	Green	EA
364-7785	Black	EA
364-7788	Orange	EA
364-7793	Pink	EA
364-7789	Purple	EA

Stock #	Color	Unit
5.75" L x 8.25" W		
364-7802	White	EA
364-7799	Red	EA
364-7803	Yellow	EA
364-7795	Blue	EA
364-7796	Green	EA
364-7794	Black	EA
364-7797	Orange	EA
364-7804	Pink	EA
364-7798	Purple	EA

RUBBER KNOBBY MAT™

- Knobby surface on both sides to allow for circulation of air or liquid.
- Mat with "X" helps prevent cross-contamination—use solid colored side for product contact.
- Formulated of FDA approved materials.
- Features (3) 0.75" die-cut hanging holes for use with stainless steel mat hanger (141-2200).
- 21" x 27".



Stock #	Color	Unit
141-2080	White with No "X"	EA
141-2081	Black with No "X"	EA
Mat with "X"		
141-2082	White	EA
141-2083	Red	EA
141-2084	Yellow	EA
141-2085	Blue	EA
141-2086	Green	EA
141-2087	Orange	EA
141-2088	Purple	EA

DUAL COLOR KNOBBY MAT™

- One side of the mat is solid black while the other is solid color making it easy to identify product and non-product surfaces.
- Formulated of FDA approved materials.
- Features (3) 0.75" die-cut hanging holes for use with stainless steel mat hanger (141-2200).
- 21" x 27".



Stock #	Color	Unit
141-2089	White/Black	EA
141-2090	Red/Black	EA
141-2091	Yellow/Black	EA
141-2092	Blue/Black	EA
141-2093	Green/Black	EA
141-2094	Orange/Black	EA
141-2095	Purple/Black	EA

Metal Detectable Mats are differentiated with a third die-cut hole.



Interested in additional Color-Coded Products?

Request a copy of our full-line Color-Coded Catalog or visit nelsonjameson.com/colorcoded.



DELTRIN METAL DETECTOR TEST ROD

- Made of virtually indestructible plastic material called delrin.
- Use to calibrate your metal detector.
- Rods are red (ferrous), green (non-ferrous), and blue (316 stainless steel) for easy identification.
- 0.375" square x 6"L.

Stock #	Size	Unit
Ferrous Test Rods		
556-4505	0.5 mm	EA
556-4508	0.8 mm	EA
556-4510	1.0 mm	EA
556-4512	1.2 mm	EA
556-4515	1.5 mm	EA
556-4518	1.8 mm	EA
556-4520	2.0 mm	EA
556-4525	2.5 mm	EA
556-4530	3.0 mm	EA
556-4535	3.5 mm	EA
556-4540	4.0 mm	EA
556-4545	4.5 mm	EA
556-4550	5.0 mm	EA
556-4555	5.5 mm	EA
556-4560	6.0 mm	EA
556-4565	6.5 mm	EA

Stock #	Size	Unit
Non-Ferrous Test Rods		
556-4605	0.5 mm	EA
556-4608	0.8 mm	EA
556-4610	1.0 mm	EA
556-4612	1.2 mm	EA
556-4615	1.5 mm	EA
556-4618	1.8 mm	EA
556-4620	2.0 mm	EA
556-4625	2.5 mm	EA
556-4630	3.0 mm	EA
556-4635	3.5 mm	EA
556-4640	4.0 mm	EA
556-4645	4.5 mm	EA
556-4650	5.0 mm	EA
556-4655	5.5 mm	EA
556-4660	6.0 mm	EA
556-4665	6.5 mm	EA

Stock #	Size	Unit
316 Stainless Steel Test Rods		
556-4705	0.5 mm	EA
556-4708	0.8 mm	EA
556-4710	1.0 mm	EA
556-4712	1.2 mm	EA
556-4715	1.5 mm	EA
556-4718	1.8 mm	EA
556-4720	2.0 mm	EA
556-4725	2.5 mm	EA
556-4730	3.0 mm	EA
556-4735	3.5 mm	EA
556-4740	4.0 mm	EA
556-4745	4.5 mm	EA
556-4750	5.0 mm	EA
556-4755	5.5 mm	EA
556-4760	6.0 mm	EA
556-4765	6.5 mm	EA

METAL DETECTOR TEST BALL

- Made of virtually indestructible plastic material called delrin.
- Use to calibrate your metal detector.
- Balls are red (ferrous), green (non-ferrous), and blue (316 stainless steel) for easy identification.
- The high-grade certified metal spheres are completely sealed within the ball.
- 1" diameter.



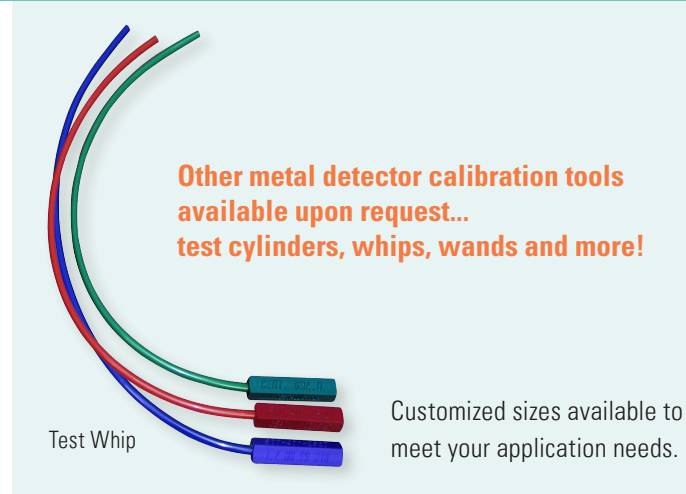
Stock #	Size	Unit
Ferrous Test Balls		
556-6505	0.5 mm	EA
556-6508	0.8 mm	EA
556-6510	1.0 mm	EA
556-6512	1.2 mm	EA
556-6615	1.5 mm	EA
556-6620	2.0 mm	EA
556-6525	2.5 mm	EA
556-6630	3.0 mm	EA
556-6535	3.5 mm	EA
556-6540	4.0 mm	EA
556-6545	4.5 mm	EA
556-6550	5.0 mm	EA
556-6555	5.5 mm	EA
556-6560	6.0 mm	EA
556-6565	6.5 mm	EA
556-6570	7.0 mm	EA

Stock #	Size	Unit
Non-Ferrous Test Balls		
556-6305	0.5 mm	EA
556-6308	0.8 mm	EA
556-6310	1.0 mm	EA
556-6313	1.2 mm	EA
556-6315	1.5 mm	EA
556-6320	2.0 mm	EA
556-6325	2.5 mm	EA
556-6330	3.0 mm	EA
556-6335	3.5 mm	EA
556-6340	4.0 mm	EA
556-6345	4.5 mm	EA
556-6350	5.0 mm	EA
556-6355	5.5 mm	EA
556-6360	6.0 mm	EA
556-6365	6.5 mm	A
556-6370	7.0 mm	EA

Stock #	Size	Unit
316 Stainless Steel Test Balls		
556-6405	0.5 mm	EA
556-6408	0.8 mm	EA
556-6410	1.0 mm	EA
556-6412	1.2 mm	EA
556-6415	1.5 mm	EA
556-6418	1.8 mm	EA
556-6420	2.0 mm	EA
556-6425	2.5 mm	EA
556-6430	3.0 mm	EA
556-6431	3.5 mm	EA
556-6441	4.0 mm	EA
556-6445	4.5 mm	EA
556-6450	5.0 mm	EA
556-6455	5.5 mm	EA
556-6460	6.0 mm	EA
556-6465	6.5 mm	EA

ACETAL METAL DETECTOR TEST CARD

- Compact design of these test cards makes them ideal in many applications.
- Double-sided.
- Certified metal spheres are completely sealed within the card.
- Cards are red (ferrous), green (non-ferrous), and blue (316 stainless steel) for easy identification.
- 2.125"W x 3.375"L



Stock #	Size	Unit
Ferrous Test Cards		
556-6700	0.5 mm	EA
556-6702	0.8 mm	EA
556-6703	1.0 mm	EA
556-6704	1.2 mm	EA
556-6706	1.5 mm	EA
556-6708	1.8 mm	EA
556-6709	2.0 mm	EA
556-6712	2.5 mm	EA
556-6715	3.0 mm	EA
556-6718	3.5 mm	EA
556-6721	4.0 mm	EA

Stock #	Size	Unit
Non-Ferrous Test Cards		
556-6734	0.5 mm	EA
556-6736	0.8 mm	EA
556-6737	1.0 mm	EA
556-6738	1.2 mm	EA
556-6740	1.5 mm	EA
556-6742	1.8 mm	EA
556-6743	2.0 mm	EA
556-6746	2.5 mm	EA
556-6749	3.0 mm	EA
556-6752	3.5 mm	EA
556-6755	4.0 mm	EA

Stock #	Size	Unit
316 Stainless Steel Test Cards		
556-6768	0.5 mm	EA
556-6770	0.8 mm	EA
556-6771	1.0 mm	EA
556-6772	1.2 mm	EA
556-6774	1.5 mm	EA
556-6776	1.8 mm	EA
556-6777	2.0 mm	EA
556-6780	2.5 mm	EA
556-6783	3.0 mm	EA
556-6786	3.5 mm	EA
556-6789	4.0 mm	EA

What is the Smallest Piece of Foreign Object that can be Detected by a Metal Detector?

This answer varies greatly. It is dependent upon the material of the contaminant itself, the speed of the line and the moisture content. The height of the detector head from the line is the most critical variable, as sensitivity decreases as height increases.

How do you Maintain Calibration?

You want to periodically check calibration by passing a known calibration test tool under the unit to check for accuracy. These can be made of ferrous, non-ferrous, or stainless steel, and come in the form of rods, cylinders, balls, whips, cards, and more.

How do you Adjust your Metal Detectors?

Machines must be calibrated to the food they are processing and then set to a threshold, determined by the company in regards to the size of the contaminant they want the detector to reject. The type of product passing through the detector (wet or dry), its size, and speed affect the setting. The metal detector manufacturer can assist with calibration setup.

What Happens if you Don't Test your Calibration?

The metal detector can allow larger pieces of foreign contaminant to get through compared to the threshold setting threatening the finished product's safety.

NEED A NEW METAL DETECTOR OR PARTS?

Give us a call! We can assist with standard and custom metal detection solutions.

X-RAY VISIBLE!

NEW

DETECTABLE BRUSHES AND BROOMS

Fully metal detectable, x-ray visible and food grade. These brushes and brooms were created to be durable, resistant, easy to clean, and ergonomic. Autoclavable at 270°F.



PUSH BROOM



Stock #	Color	Unit
Soft Bristles 13.39" x 2.95" x 4.5"		
364-7243	Blue	EA
Soft Bristles 18.90" x 3.15" x 5.12"		
364-7245	Blue	EA
Medium Bristles 13.39" x 2.95" x 4.5"		
364-7244	Blue	EA
Medium Bristles 18.90" x 3.15" x 5.12"		
364-7246	Blue	EA



WALL/FLOOR SCRUB BRUSH

Stock #	Color	Unit
Soft Bristles 11.02" x 2.36" x 2.76"		
364-7247	Blue	EA
Medium Bristles 18.11" x 2.56" x 3.54"		
364-7249	Blue	EA



HANDLE



Stock #	Color	Unit
Polypropylene Handle 53"		
364-7701	Blue	EA

DISH BRUSH

Stock #	Color	Unit
Soft Bristles 9.25" x 1.57" x 2"		
364-7241	Blue	EA
Medium Bristles 9.25" x 1.57" x 2"		
364-7242	Blue	EA



NAIL BRUSH

Stock #	Color	Unit
Soft Bristles 4.5" x 1.69" x 1.81"		
364-7240	Blue	EA
Stiff, Resin Set Bristles 4.5" x 1.69" x 1.81"		
364-2389	Blue	EA



HAND BRUSH

Stock #	Color	Unit
Short Handle—Stiff, Resin Set Bristles 10" x 2.8"		
364-2386	Blue	EA
Long Handle—Stiff, Resin Set Bristles 16" x 2"		
364-2387	Blue	EA



BANISTER BRUSH

Stock #	Color	Unit
Soft Bristles 14.57" x 1.57"		
364-7335	Blue	EA
Soft, Resin Set Bristles 12.5" x 1.4"		
364-2388	Blue	EA
Medium Bristles 14.57" x 1.57"		
364-7336	Blue	EA
Stiff, Resin Set Bristles 12.75" x 1.57" x 1.77"		
364-7252	Blue	EA



CYLINDER BRUSH

Stock #	Color	Unit
Soft Bristles 13.78" L x 3.15" Dia		
364-7731	Blue	EA
Medium Bristles 13.78" L x 3.15" Dia		
364-7250	Blue	EA

KNIVES

- Hardened and tempered stainless steel blades forged in the UK.
- Handles are insert molded to the blades to avoid cracks/voids.
- 10/pack.

NEW

4" Light Cooks Knife

364-7534	364-7535	364-7536	364-7537	364-7538	364-7539
White	Red	Yellow	Blue	Green	Black
364-7540	364-7541	364-7542			
Orange	Pink	Purple			

10" Cooks Knife

364-7543	364-7544	364-7545	364-7546	364-7547	364-7548
White	Red	Yellow	Blue	Green	Black
364-7549	364-7550	364-7551			
Orange	Pink	Purple			

10" Butcher's Knife

364-7553	364-7554	364-7555	364-7556	364-7557	364-7558
White	Red	Yellow	Blue	Green	Black
364-7559	364-7560	364-7561			
Orange	Pink	Purple			

12" Butcher's Knife

364-7562	364-7563	364-7564	364-7565	364-7566	364-7567
White	Red	Yellow	Blue	Green	Black
364-7568	364-7569	364-7570			
Orange	Pink	Purple			

6" Boning Knife

364-7580	364-7581	364-7582	364-7415	364-7583	364-7584
White	Red	Yellow	Blue	Green	Black
364-7585	364-7586	364-7587			
Orange	Pink	Purple			

6" Curved Boning Knife

364-7571	364-7572	364-7573	364-7574	364-7575	364-7576
White	Red	Yellow	Blue	Green	Black
364-7577	364-7578	364-7579			
Orange	Pink	Purple			

3.5" Vegetable Knife

364-7498	364-7499	364-7509	364-7510	364-7511	364-7512
White	Red	Yellow	Blue	Green	Black
364-7513	364-7514	364-7515			
Orange	Pink	Purple			

4" Vegetable Knife

364-7229	364-7226	364-7227	364-7225	364-7228	364-7516
White	Red	Yellow	Blue	Green	Black
364-7517	364-7518	364-7519			
Orange	Pink	Purple			



6" Blunt Tip Vegetable Knife

364-7489	364-7490	364-7491	364-7492	364-7493	364-7494
White	Red	Yellow	Blue	Green	Black
364-7495	364-7496	364-7497			
Orange	Pink	Purple			

10" Sandwich Knife

364-7588	364-7589	364-7590	364-7591	364-7592	364-7593
White	Red	Yellow	Blue	Green	Black
364-7594	364-7595	364-7596			
Orange	Pink	Purple			

10" Wavy Edge Slicer

364-7597	364-7598	364-7599	364-7600	364-7601	364-7602
White	Red	Yellow	Blue	Green	Black
364-7603	364-7604	364-7605			
Orange	Pink	Purple			

6" Filleting Knife

364-7606	364-7607	364-7608	364-7609	364-7610	364-7611
White	Red	Yellow	Blue	Green	Black
364-7612	364-7613	364-7614			
Orange	Pink	Purple			

8" Palette Knife

364-7615	364-7616	364-7617	364-7618	364-7619	364-7620
White	Red	Yellow	Blue	Green	Black
364-7621	364-7622	364-7623			
Orange	Pink	Purple			

3" Paring Knives

364-7525	364-7526	364-7527	364-7528	364-7529	364-7530
White	Red	Yellow	Blue	Green	Black
364-7531	364-7532	364-7533			
Orange	Pink	Purple			

4" Paring Knives

364-7520	364-7413	364-7521	364-7411	364-7414	364-7412
White	Red	Yellow	Blue	Green	Black
364-7522	364-7523	364-7524			
Orange	Pink	Purple			

SQUEEGEE

NEW

X-RAY VISIBLE!

- Fully metal detectable and x-ray visible.
- Rigid yet flexible.



Stock #	Color	Unit
11.75" w/ 6.75" Handle		
364-7203	Blue	EA
23.66"		
364-7452	Blue	EA

X-RAY VISIBLE!

DUSTPAN

- Metal detectable and x-ray visible.
- Easy to clean.



Stock #	Color	Unit
12" x 6.25" x 2"		
364-2601	Red	EA
364-2600	Blue	EA



**NOW AVAILABLE
IN PINK**

X-RAY VISIBLE!



SCOOP

- Lightweight scoops are metal detectable as well as x-ray visible.
- Slotted hang hole in handle to allow for hygienic storage between uses.
- Made from FDA-compliant polypropylene.



Stock #	Color	Unit
Mini - 6-oz capacity 4.3"L x 3.3"W x 1.6"H		
364-7108	Light Gray	EA
364-7104	Red	EA
364-7107	Yellow	EA
364-7102	Blue	EA
364-7105	Green	EA
364-7103	Black	EA
364-7106	Orange	EA
364-7347	Pink	BX
364-7109	Purple	EA

Stock #	Color	Unit
Small - 18-oz capacity 5.9"L x 4.3"W x 2.4"H		
364-7116	Light Gray	EA
364-7112	Red	EA
364-7115	Yellow	EA
364-7110	Blue	EA
364-7113	Green	EA
364-7111	Black	EA
364-7114	Orange	EA
364-7348	Pink	BX
364-7117	Purple	EA

Stock #	Color	Unit
Medium - 26-oz capacity 7.1"L x 5.3"W x 3"H		
364-7124	Light Gray	EA
364-7120	Red	EA
364-7123	Yellow	EA
364-7118	Blue	EA
364-7121	Green	EA
364-7119	Black	EA
364-7122	Orange	EA
364-7349	Pink	BX
364-7125	Purple	EA

Stock #	Color	Unit
Large - 35-oz capacity 8.9"L x 5.5"W x 3.3"H		
364-7132	Light Gray	EA
364-7128	Red	EA
364-7131	Yellow	EA
364-7126	Blue	EA
364-7129	Green	EA
364-7127	Black	EA
364-7130	Orange	EA
364-7358	Pink	BX
364-7133	Purple	EA



REMCO SCOOP

- Tough construction makes these one-piece scoops ideal for a variety of applications.
- Features a convenient hole for hanging.
- Made from FDA-compliant polypropylene.

Remco
a Vikon company

Stock #	Description	Unit
32-oz Capacity 11.5"L x 5"W x 2.75"D		
690-2670	Light Gray	EA
690-2669	Red	EA
690-2654	Blue	EA
690-2671	Green	EA
82-oz Capacity 15"L x 6.5"W x 3.5"D		
690-2673	Light Gray	EA
690-2672	Red	EA
690-2655	Blue	EA
690-2674	Green	EA



X-RAY VISIBLE!

STERILEWARE® SENSE-ABLE™ SCOOP

- Entire scoop is metal detectable and x-ray visible.
- Sterile, FDA grade polystyrene, safe for food and drug use.
- Individually packaged, easy open bag.
- Flat bottom allows use as weigh boat.
- Blue.
- 100/case.

Stock #	Capacity	Size
010-3600	2-oz/60 mL	20.5 x 4.41 x 2.9 cm
010-3604	4-oz/125 mL	22.1 x 5.1 x 3.3 cm
010-3608	8-oz/250 mL	19.1 x 5.4 x 4.9 cm

FLAT BOTTOM FLOUR SCOOP

- Inner graduations in milliliters and ounces for accurate measurements.
- Slotted hang hole in handle to allow for hygienic storage between uses.
- Flat bottom for stability.
- Made from FDA-compliant polypropylene.

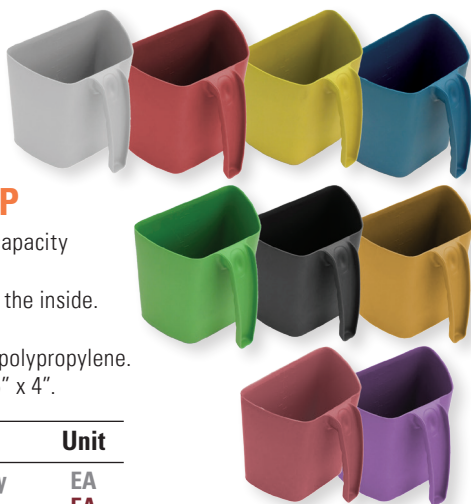
Stock #	Capacity	Graduations	Unit
Red			
364-7359	250 mL/8.8-oz	50 mL/2-oz	BX
364-7365	500 mL/17.6-oz	100 mL/3-oz	BX
364-7369	1000 mL/35.2-oz	200 mL/5-oz	BX
Blue			
364-7328	250 mL/8.8-oz	50 mL/2-oz	EA
364-7200	500 mL/17.6-oz	100 mL/3-oz	EA
364-7329	1000 mL/35.2-oz	200 mL/5-oz	EA



**NOW AVAILABLE
IN RED**

Detectamet
MANUFACTURING DETECTABLE FOOD SAFETY.
OFFICE & PROFESSIONAL CLEANING PRODUCTS

NOW AVAILABLE IN PINK



FLAT SIDED SCOOP

- Lightweight durable large capacity scoop.
- Pint and mL graduations on the inside.
- 3.5-Pint/2 L capacity.
- Made from FDA-compliant polypropylene.
- Depth: 6.75". Opening: 6.75" x 4".

Stock #	Color	Unit
364-7387	Light Gray	EA
364-7380	Red	EA
364-7381	Yellow	EA
364-7165	Blue	EA
364-7382	Green	EA
364-7383	Black	EA
364-7384	Orange	EA
364-7376	Pink	EA
364-7385	Purple	EA



REMCO SHOVEL

- One-piece construction ensures they will hold up on the job.
- "D" style handle aids in comfort and control.
- Smooth finish for easy clean-up.
- Made from FDA-compliant polypropylene.

Stock #	Color	Unit
11"W x 14"D x 38"L		
690-2653	Light Gray	EA
690-2652	Red	EA
690-2650	Blue	EA
690-2658	Green	EA
14"W x 17"D x 42"L		
690-2661	Light Gray	EA
690-2659	Red	EA
690-2651	Blue	EA
690-2662	Green	EA

MEASURING CUP

NOW AVAILABLE IN PINK

- Stackable for easy storage and transport.
- Internal graduations in pints, ounces, and mL.
- Made from FDA-compliant polypropylene.

Stock #	Color	Unit
Small—1 L/2-Pints 4.75"D x 5"H		
364-7367	Light Gray	EA
364-7368	Red	EA
364-7361	Yellow	EA
364-7168	Blue	EA
364-7360	Green	EA
364-7362	Black	EA
364-7363	Orange	EA
364-7379	Pink	EA
364-7364	Purple	EA
Large—2 L/4.2-Pints 6"D x 6"H		
364-7377	Light Gray	EA
364-7370	Red	EA
364-7371	Yellow	EA
364-7169	Blue	EA
364-7372	Green	EA
364-7373	Black	EA
364-7374	Orange	EA
364-7386	Pink	EA
364-7375	Purple	EA



REMCO PADDLE SCRAPER

- One-piece detectable mixing paddles are easy to clean.
- Virtually unbreakable.
- Blades measure: 6" x 13"L. 52" OAL.
- Made from FDA-compliant polypropylene.

Stock #	Color	Unit
690-2676	Light Gray	EA
690-2675	Red	EA
690-2600	Blue	EA
690-2677	Green	EA



STACKABLE STORAGE TRAY

X-RAY VISIBLE!

- Ideal for safe transporting and storing products and ingredients.
- Designed to be used with standard food factory conveyors.
- Tray measures 22.75"L x 15.75"W x 4.75"D.

Stock #	Color
With Lid	
364-7332	Red
364-7334	Yellow
364-7331	Blue
364-7333	Green



REMCO SCRAPER

- Strong, seamless construction ensures there are no areas to harbor bacteria.
- Handle features a thumb indentation for stronger grip and control.
- Works well for pans, vats, tables, or counter tops.
- Working temperature range: -22° to 176°F (-30° to 80°C).
- Made from FDA-compliant polypropylene.

Stock #	Color	Unit
Small 3"W x 8"		
690-2664	Light Gray	EA
690-2663	Red	EA
690-2656	Blue	EA
690-2665	Green	EA
Large 4.4"W x 9.7"		
690-2667	Light Gray	EA
690-2666	Red	EA
690-2657	Blue	EA
690-2668	Green	EA



X-RAY VISIBLE!

STIRRING SCRAPER

- Tough and durable mixing or scraping tool.
- Easy to clean.

Stock #	Color	Unit
Without Holes		
364-7769	White	EA
364-7766	Red	EA
364-7768	Yellow	EA
364-7765	Blue	EA
364-7767	Green	EA
With Holes		
364-7774	White	EA
364-7771	Red	EA
364-7773	Yellow	EA
364-7770	Blue	EA
364-7772	Green	EA



Detectamet
MANUFACTURING DETECTABLE FOOD SAFETY,
OFFICE & PROFESSIONAL CLEANING PRODUCTS

X-RAY VISIBLE!

FLEXI SPATULA/SCRAPER

- Tapered edge for better cleaning.
- Lightweight for easier handling.
- Tough and durable.

Stock #	Color	Unit
364-2239	White	EA
364-2236	Red	EA
364-2238	Yellow	EA
364-2234	Blue	EA
364-2237	Green	EA
364-2235	Black	EA
364-2241	Orange	EA
364-2242	Pink	EA
364-2240	Purple	EA



Detectamet
MANUFACTURING DETECTABLE FOOD SAFETY,
OFFICE & PROFESSIONAL CLEANING PRODUCTS

PLASTIC HAND SCRAPER

- Slotted hang hole in handle to allow for hygienic storage between uses.
- One-piece injection molded design.
- Maximum working temperature of 212°F.
- Made from FDA-compliant polypropylene.

Stock #	Color	Unit
3"W x 7.87"L		
364-7316	Light Gray	EA
364-7313	Red	EA
364-7315	Yellow	EA
364-7312	Blue	EA
364-7314	Green	EA
364-7319	Black	EA
364-7318	Orange	EA
364-7317	Purple	EA
4"W x 9.65"L		
364-7324	Light Gray	EA
364-7321	Red	EA
364-7323	Yellow	EA
364-7320	Blue	EA
364-7322	Green	EA
364-7327	Black	EA
364-7326	Orange	EA
364-7325	Purple	EA



Detectamet
MANUFACTURING DETECTABLE FOOD SAFETY,
OFFICE & PROFESSIONAL CLEANING PRODUCTS

SERRATED EDGE SCRAPER

- Suitable for a wide range of applications including baking, royal icing, and buttercream icing.
- Tapered edge for creating a smooth finish and a serrated edge for a textured finish.
- Slotted hole for easy hanging between uses.
- Made from FDA-compliant polypropylene.

Stock #	Color	Unit
Small 4" x 6.25"		
364-7397	Light Gray	EA
364-7390	Red	EA
364-7391	Yellow	EA
364-7392	Blue	EA
364-7393	Green	EA
364-7394	Black	EA
364-7395	Orange	EA
364-7388	Pink	PK
364-7396	Purple	EA
Large 4.5" x 7.5"		
364-7357	Light Gray	EA
364-7350	Red	EA
364-7351	Yellow	EA
364-7352	Blue	EA
364-7353	Green	EA
364-7354	Black	EA
364-7355	Orange	EA
364-7389	Pink	PK
364-7356	Purple	EA



Detectamet
MANUFACTURING DETECTABLE FOOD SAFETY,
OFFICE & PROFESSIONAL CLEANING PRODUCTS

X-RAY VISIBLE!

**NOW AVAILABLE
IN PINK**

X-RAY VISIBLE!

REMCO BENCH SCRAPER

- Slotted grip design makes scrapers simpler to grasp and easier to control.
- One-piece, injection molded with no seams or cracks for bacteria growth.
- Will not scratch metal surfaces.
- Made from FDA-compliant polypropylene.



Remco
a Vikan company

Stock #	Color	Unit
5" W x 8.5"		
690-2621	Light Gray	EA
690-2622	Red	EA
690-2623	Blue	EA
690-2624	Green	EA

REMCO MINI-BENCH SCRAPER

- Perfect for those tight narrow areas or bench-top applications.
- One-piece injection molded with no seams or cracks to harbor bacteria.
- Will not scratch metal surfaces.
- Made from FDA-compliant polypropylene.



Remco
a Vikan company

Stock #	Color	Unit
3.5" W x 5.5"		
690-2518	Light Gray	EA
690-2519	Red	EA
690-2520	Blue	EA
690-2521	Green	EA

LPS DETEX® SCOURING PAD

- Patent pending.
- Manufactured from Nylon 6,6 with resin encapsulated iron particles.
- Long-lasting scrub pad with durable abrasive.
- Withstands harsh food processing environments and resists fraying.
- Applications: Ovens, kettles, fryers, breading and mixing equipment, conveyor and freezer belts, and grinders.
- 10/pack.



Detectamet
MANUFACTURING DETECTABLE FOOD SAFETY, OFFICE & PROFESSIONAL CLEANING PRODUCTS

Stock #	Color	Unit
8-7/8" x 5-7/8" x 3/8"		
364-7428	Blue	PK

NEW

FLEXI-SCRAPER

X-RAY VISIBLE!

- Ideal for cutting dough, scraping batter, or removing food particles from curved or flat surfaces.
- Slotted hole allows for easy hanging between uses.
- Made from FDA-compliant polypropylene.

NOW AVAILABLE IN PINK



Stock #	Color	Unit
Small 6.3" x 4"		
364-7100	Light Gray	EA
364-7096	Red	EA
364-7099	Yellow	EA
364-7075	Blue	EA
364-7097	Green	EA
364-7095	Black	EA
364-7098	Orange	EA
364-7398	Pink	BX
364-7101	Purple	EA

Stock #	Color	Unit
Large 8.85" x 4.7"		
364-7093	Light Gray	EA
364-7090	Red	EA
364-7074	Yellow	EA
364-7088	Blue	EA
364-7091	Green	EA
364-7089	Black	EA
364-7092	Orange	EA
364-7399	Pink	BX
364-7094	Purple	EA

Detectamet
MANUFACTURING DETECTABLE FOOD SAFETY, OFFICE & PROFESSIONAL CLEANING PRODUCTS

16' TAPE MEASURE

- Push-release self-locking mechanism.
- Easy to clean.
- Food safe.
- Durable.



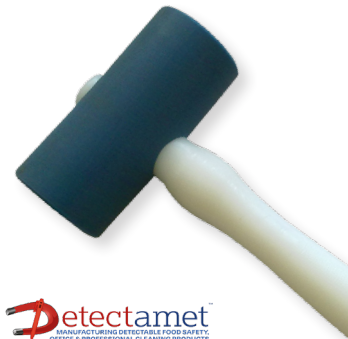
NEW

Detectamet
MANUFACTURING DETECTABLE FOOD SAFETY, OFFICE & PROFESSIONAL CLEANING PRODUCTS

Stock #	Description	Unit
364-7454	Oiled Steel	EA
364-7455	Stainless Steel	EA

MALLET

- High-impact detectable plastic head and standard plastic handle.
- Resistant to corrosion and most chemicals and will not fracture, splinter, or delaminate.
- Soft-faced mallet head is fitted to plastic handle to meet Food Hygiene Regulations.
- 11.75" L x 4.5" W.



Detectamet
MANUFACTURING DETECTABLE FOOD SAFETY, OFFICE & PROFESSIONAL CLEANING PRODUCTS

Stock #	Color	Diameter	Unit
364-7457	Blue Head	1"	EA
364-7188	Blue Head	2"	EA

X-RAY VISIBLE!

NEW COLORS AVAILABLE



CLAMP GASKET

- Provides metal detection to ensure product quality.
- X-ray detectable.
- Dot color indicates gasket elastomer type.

Stock #	Size	Unit
Red Buna ●●●●		
291-1910	1"	EA
291-1916	1-1/2"	EA
291-1920	2"	EA
291-1925	2-1/2"	EA
291-1930	3"	EA
291-1940	4"	EA
291-1961	6"	EA

Stock #	Size	Unit
Red Viton ○●●●●		
291-3010	1"	EA
291-3015	1-1/2"	EA
291-3020	2"	EA
291-3025	2-1/2"	EA
291-3030	3"	EA
291-3040	4"	EA
291-3060	6"	EA

Stock #	Size	Unit
Red EPDM ●●●●●●		
291-2010	1"	EA
291-2015	1-1/2"	EA
291-2020	2"	EA
291-2025	2-1/2"	EA
291-2030	3"	EA
291-2040	4"	EA
291-2060	6"	EA

Stock #	Size	Unit
Black Buna ●●●●		
291-7810	1"	EA
291-7815	1-1/2"	EA
291-7821	2"	EA
291-7825	2-1/2"	EA
291-7830	3"	EA
291-7840	4"	EA
291-7860	6"	EA

Stock #	Size	Unit
Black Viton ○●●●●		
291-7100	1"	EA
291-7150	1-1/2"	EA
291-7200	2"	EA
291-7250	2-1/2"	EA
291-7300	3"	EA
291-7400	4"	EA
291-7600	6"	EA

Stock #	Size	Unit
Black EPDM ●●●●●●		
291-9610	1"	EA
291-7615	1-1/2"	EA
291-7620	2"	EA
291-7625	2-1/2"	EA
291-7630	3"	EA
291-7640	4"	EA
291-7660	6"	EA

Stock #	Size	Unit
Blue Buna ●●●●		
291-2410	1"	EA
291-2415	1-1/2"	EA
291-2420	2"	EA
291-2425	2-1/2"	EA
291-2430	3"	EA
291-2440	4"	EA
291-2460	6"	EA

Stock #	Size	Unit
Blue Viton ○●●●●		
291-9210	1"	EA
291-9215	1-1/2"	EA
291-9220	2"	EA
291-9225	2-1/2"	EA
291-9230	3"	EA
291-9240	4"	EA
291-9260	6"	EA

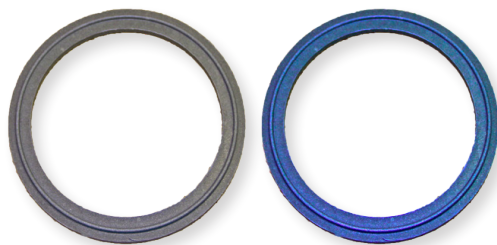
Stock #	Size	Unit
Blue Silicone ●●		
291-1810	1"	EA
291-1815	1.5"	EA
291-1820	2"	EA
291-1825	2.5"	EA
291-1830	3"	EA
291-1840	4"	EA
291-1860	6"	EA

Stock #	Size	Unit
Blue EPDM ●●●●●●		
291-9710	1"	EA
291-9715	1.5"	EA
291-9720	2"	EA
291-9725	2.5"	EA
291-9730	3"	EA
291-9740	4"	EA
291-9760	6"	EA

POLY-SS & POLY-SS-XR CLAMP GASKET

- Poly-SS gaskets blend PTFE barium and stainless steel to make a super strong, long lasting gasket.
- Choose regular metal detectable (gray Poly-SS), or metal detectable/x-ray detectable (blue Poly-SS-XR).
- Chemical resistant.
- Working Temperature -320° to 550°F.

X-RAY VISIBLE!



Stock #	Color	Size	Unit
Poly-SS Metal Detectable			
291-7010	Gray	1"	EA
291-7015	Gray	1-1/2"	EA
291-7020	Gray	2"	EA
291-7025	Gray	2-1/2"	EA
291-7030	Gray	3"	EA
291-7040	Gray	4"	EA
291-7050	Gray	6"	EA
291-7080	Gray	8"	EA

Stock #	Color	Size	Unit
Poly-SS-XR Metal Detectable & X-Ray Detectable			
291-7011	Blue	1"	EA
291-7017	Blue	1-1/2"	EA
291-7021	Blue	2"	EA
291-7026	Blue	2-1/2"	EA
291-7031	Blue	3"	EA
291-7041	Blue	4"	EA
291-7051	Blue	6"	EA



Detectamet
MANUFACTURING DETECTABLE FOOD SAFETY OFFICE & PROFESSIONAL CLEANING PRODUCTS

GASKET SCRAPER

- Perfect for gasket scraping, removal of rust, and removal of grease from hard to reach areas.
- Stainless steel blade for strength and durability.

Stock #	Blade Width	Unit
364-7749	1/2"	EA
364-7750	2/3"	EA
364-7751	3/4"	EA

NEW



SEAMLESS RUBBER TUBING

- Magnetic detectable, magnetic susceptible, and x-ray detectable.
- Natural gum rubber FDA acceptable for direct food contact.
- 1/8" Wall thickness.
- Blue seamless mandrel wrapped.
- Additional sizes and materials available.

Stock #	Length	Unit
2" Dia		
604-8103	24'	RL
4" Dia		
604-8104	12'	RL
604-8204	24'	RL
604-8304	48'	RL
6" Dia		
604-8106	12'	RL
604-8206	24'	RL
604-8306	48'	RL

Stock #	Length	Unit
8" Dia		
604-8108	12'	RL
604-8208	24'	RL
604-8308	48'	RL
10" Dia		
604-8110	12'	RL
604-8210	24'	RL
604-8310	48'	RL
12" Dia		
604-8112	12'	RL
604-8212	24'	RL
604-8312	48"	RL



NEW

DURA-BALL METAL DETECTABLE SCREEN CLEANING BALLS

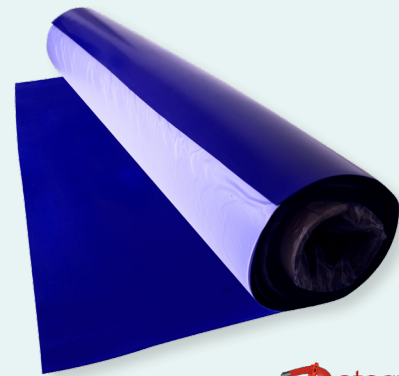
- Homogenous blend of magnetically-reactive material.
- Entire ball from surface to core has strong attraction to magnetic fields.
- FDA acceptable for direct food contact.

Stock #	Dia	Unit
604-8401	5/8"	EA
604-8400	2"	EA

Other metal detectable/x-ray visible products include O-Rings, orifice gaskets, screen gaskets, John Perry, I-line, bevel seat gaskets, and custom sheets in a variety of colors, sizes and thicknesses.

Call our process systems department for details.

NEW



RUBBER SHEETING

- FDA food grade.
- Metal detectable blue silicone rubber material.
- Great for gaskets and seals.
- Temperature Range -76° to 392°F.
- 2000 mm x 1000 mm rolls.

Stock #	Thickness	Unit
364-2480	1.5 mm	RL
364-9002	2 mm	RL
364-9003	3 mm	RL
364-9004	4 mm	RL
364-9005	5 mm	RL
364-9006	6 mm	RL
364-9010	10 mm	RL

LKH PUMP SEAL KIT



- OEM Alfa Laval metal detectable shaft seal.
- Made of metal detectable EPDM elastomers.
- Includes (1) stationary seal ring, (1) o-ring for stationary, (1) rotary seal ring, and (1) o-ring for rotary.
- Metal detectable EPDM service kits LKH pumps also available.



Stock #	Fits	Materials
383-1420	LKH 5-60	Carbon/ Silicon Carbide
383-1870	LKH 70-90	Carbon/ Silicon Carbide
383-2210	LKH 5-60	Silicon Carbide/ Silicon Carbide
383-2370	LKH 70-90	Silicon Carbide/Silicon Carbide

It's imperative you use the correct knife for the job to reduce the risk of potential contaminants. Each type of packaging below has a unique icon to help you select the right knives for your application.



CARDBOARD



PLASTIC ADHESIVE TAPE



PALLET STRAPPED BOXES



FILM WRAPPED BOXES



SACKS/PLASTIC BAGS



BUBBLE WRAP



PLASTIC NETTING



PLASTIC STRAPPING



PLASTIC FILM

MULTIPURPOSE SAFETY KNIFE

- Disposable knife for light use.
- Body is made of impact resistant, metal detectable polypropylene for durability and is food contact approved.
- Hygienic, molded in shielded stainless steel blades for added safety.
- Pointed nose allows for insertion of the cutter into all types of paper and plastic.
- Available with or without hook blade or with tape slitter.

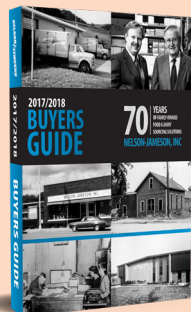
Stock #	Color	Unit
Without Hook Blade or Tape Slitter		
364-2417	Red	BX
364-2418	Yellow	BX
364-2419	Blue	BX
364-2420	Green	BX
With Hook Blade		
364-2421	Red	BX
364-2422	Yellow	BX
364-2423	Blue	BX
364-2424	Green	BX
With Tape Slitter		
364-2426	Red	BX
364-2427	Yellow	BX
364-2428	Blue	BX
364-2429	Green	BX



Looking for More Safety Knives?

Call to request a FREE Buyers Guide today!

1-800-826-8302
nelsonjameson.com



NEW

COMBI CUTTER

- Designed to cut with absolute safety and efficiency. **MARTOR® USA**
- Includes an integrated tape slitter.
- Available in 2 versions: easy tool free blade change or with locking blade cover that requires a special tool (445-2053) to access the blade (sold separately).

Stock #	Color	Unit
445-2144	Blue	EA



LIGHT-DUTY PACKAGING CUTTER



- Reduce the risk of accident through blade changing by using this light-duty fixed blade cutter.
- Body is made of impact resistant, metal detectable polypropylene for durability.
- Pointed nose allows for insertion of the cutter into all types of paper and plastic.
- Non-replaceable stainless steel blade.

Stock #	Color	Unit
364-2408	Red	BX
364-2409	Yellow	BX
364-2411	Blue	BX
364-2412	Green	BX



HEAVY-DUTY PACKAGING CUTTER



- Heavy-duty fixed blade cutter, reduces the risk of accidents by eliminating blade change.
- Body is made of impact resistant, metal detectable polypropylene for durability.
- Integrated tape slitter safely cuts packaging tape without an exposed blade.
- Pointed nose allows for insertion of the cutter into all types of paper and plastic.

Stock #	Color	Unit
364-2413	Red	BX
364-2414	Yellow	EA
364-2415	Blue	BX
364-2416	Green	BX





RETRACTABLE SAFETY KNIFE

- Blade locks in the 'out' position while a controlled cut is being made. If the knife is jerked, shaken or dropped, the blade will retract.
- Blade lock control for safe storage.
- Easy blade change.
- SS straight replacement blades are 10/pack.



Stock #	Description	Unit
364-2638	Safety Knife with Plastic Blade Carrier	EA
364-2639	Safety Knife with Aluminum Blade Carrier	EA
364-2648	Replacement SS Straight Blade	PK

SAFETY KNIFE WITH RETRACTABLE HOOK BLADE

- Stainless steel blade is molded into the metal detectable plastic.
- Patented 'opposed exits' at the back of the blade.
- Spring loaded auto retractable hook blade.



Stock #	Unit
364-2643	BX



SMARTCUT SAFETY KNIFE

- Disposable, ambidextrous, spring-loaded safety knife.
- Designed specifically for packaging materials.
- Non-replaceable stainless steel blade.



Stock #	Description	Unit
445-2054	4" L Safety Knife	EA

NEW



RETRACTABLE SAFETY KNIFE

- Blade locks in the 'out' position while a controlled cut is being made.
- Blade retracts once contact with cutting surface is lost.
- Easy blade change—just slide the blade mount insert back.
- Replacement blades are 100/box.



Stock #	Description	Unit
445-2019	Stainless Steel/Blue Self Retracting	EA
445-2016	Stainless Steel Blades	BX

BAG CUTTER

- Specifically designed to cut multi-layer paper or plastic.
- Molded in stainless steel blade for added safety.
- Patented opposed slopes at the back of the blade reduce friction resistance which enables a smooth and more effective cut.



Stock #	Color	Unit
364-2430	Blue	BX

HEAVY-DUTY SAFETY KNIFE

- Unique patented valley guides the material to be cut directly along the surgical steel blade taking the strain off the operator.
- Fast blade change.
- Easy to clean.
- Suitable for cutting cable ties, rope, string, and netting.
- SS straight replacement blades are 10/pack.



Stock #	Description	Unit
364-2641	Heavy-Duty Safety Knife	EA
364-2642	Replacement SS Straight Blade	PK



BOX CUTTER WITH HOOK BLADE

- Automatic spring-loaded finger guards protect and retract when cutting, leaving only the blunt edge of the hook blade exposed when knife is not in use.
- Hook blade punctures the box and prevents damage to contents.
- Straight blade cuts conventionally at a 45° angle.
- Thumb grip for superior control.
- Internal storage for new and used blades.
- Replacement blades are 10/pack.

Stock #	Description	Unit
364-2634	Box Cutter	EA
364-2636	Replacement SS Straight Blade	PK
364-2637	Replacement Carbon Hook Blade	PK



CABLE TIES

- Metal content blended throughout cable tie.
- 2-3 times stronger signal strength compared to competition.
- US FDA food contact material compliance.
- Prevent possible contamination resulting in costly recalls and liabilities.
- Teal.
- 100/pack.



ACT
ADVANCED CABLE TIES, INC.

Stock #	Length	Tensile Strength	Unit
027-6153	4"	18-lbs	PK
027-6154	7"	50-lbs	PK
027-6152	8"	40-lbs	PK
027-6155	11"	50-lbs	PK
027-6156	14"	50-lbs	PK
027-6148	14"	120-lbs	PK

KEYHOLE TAGS

- Made of quad-laminate material designed for food processing environments.
- 2" x 11" tags are pre-printed on one side with Product, Date/Time, Batch Code, Use By, and two blank lines.
- Heat resistant up to 300°F.
- Detectable by end of the line metal detectors.
- 500/roll.

NEW COLORS AVAILABLE



Detectamet
MANUFACTURING DETECTABLE FOOD SAFETY
OFFICE & PROFESSIONAL CLEANING PRODUCTS

Stock #	Color	Unit
---------	-------	------

1" x 7.5"

364-2319	White	RL
364-2311	Red	RL
364-2314	Yellow	RL
364-2312	Blue	RL
364-2313	Green	RL
364-2318	Brown	RL
364-7445	Beige	RL
364-2315	Orange	RL
364-7444	Pink	RL
364-2316	Purple	RL

2" x 11"

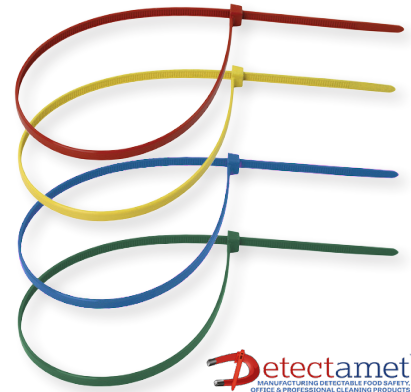
364-2326	White	RL
364-2321	Red	RL
364-2324	Yellow	RL
364-2320	Blue	RL
364-2325	Green	RL
364-2322	Brown	RL
364-7447	Beige	RL
364-2323	Orange	RL
364-7446	Pink	RL

CABLE TIES

- Even small pieces of the tie can be detected by standard metal detection and x-ray equipment.
- Ideal for bag and sack tying.
- Suited for electrical cabling applications in areas adjacent to the manufacturing process.
- 100/pack.

Stock #	Color	Type	Unit
6"			
364-7026	Blue	Locking	PK
8"			
364-7027	Blue	Locking	PK
10"			
364-7028	Blue	Releasable	PK
15"			
364-7034	Red	Locking	PK
364-7037	Yellow	Locking	PK
364-7002	Blue	Locking	PK
364-7035	Green	Locking	PK

X-RAY VISIBLE!



Detectamet
MANUFACTURING DETECTABLE FOOD SAFETY
OFFICE & PROFESSIONAL CLEANING PRODUCTS

HIGH HEAT KEYHOLE TAGS

- Resists temperatures up to 482°F.
- 11"L x 1.9" tags are pre-printed on one side with Product, Date/Time, Batch Code, Use By, and two blank lines.
- Can be used with fine tip markers on page 9.
- 500/roll.

NEW COLORS AVAILABLE

Stock #	Color	Unit
364-7438	White	RL
364-7436	Red	RL
364-7809	Yellow	RL
364-7760	Blue	RL
364-7437	Green	RL
364-7442	Brown	RL
364-7443	Beige	RL
364-7440	Orange	RL
364-7441	Pink	RL
364-7439	Purple	RL



Detectamet
MANUFACTURING DETECTABLE FOOD SAFETY
OFFICE & PROFESSIONAL CLEANING PRODUCTS

REUSABLE PLASTIC TAGS

- Developed to allow small traces of label and tag fragments to be detected and rejected at any stage of the production process.
- Can be used in conjunction with dry erase or marker pens on pages 9.
- 25/pack.

Stock #	Color	Unit
3.5" x 10.5"		
364-7449	White	PK
364-2331	Red	PK
364-2333	Yellow	PK
364-2330	Blue	PK
364-2332	Green	PK
364-7448	Black	PK
364-2334	Orange	PK
364-7451	Pink	PK
364-7450	Purple	PK

X-RAY VISIBLE!

NEW COLORS AVAILABLE



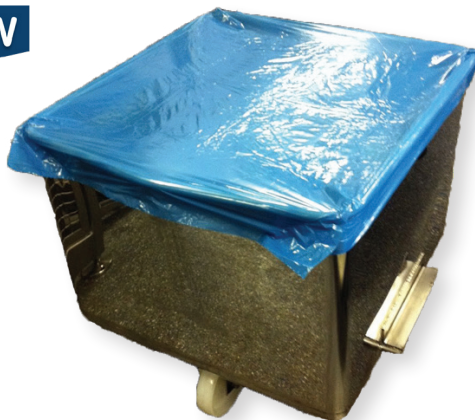
Detectamet
MANUFACTURING DETECTABLE FOOD SAFETY
OFFICE & PROFESSIONAL CLEANING PRODUCTS



NEW

TOTE BIN COVERS

- 1.5 mil.
- 250/roll.



Stock #	Color	Unit
364-7720	Red	RL
364-7725	Yellow	RL
364-7715	Blue	RL
364-7730	Green	RL

NEW

WHIRL-PAK® DETECTABLE BAGS

- Bag closure is made with steel wire, detectable with standard metal detectable equipment.
- 500/box.



Stock #	Size	Mils	Unit
18-oz (532 mL)			
486-3264	4-½" x 9"	2.5	BX
42-oz (1,242 mL)			
486-3265	6" x 15"	3	BX



UNDERSTANDING METAL DETECTORS

There are three versions of metal detectors—tunnel (typical for cheese), pipeline (for fluid products), and free fall (for powders). Detectronics makes sanitary designed metal detectors suitable for the wash down environment in Cheese and Protein Processing. Replacement metal detector heads available for most existing MD conveyors. The latest version features color HMI with flexible user programming.

- Tough and robust structure of stainless steel.
- Cost effective and extreme reliability.
- Hygienic design and compliant with IP67/IP69K/NEMA4.
- Digital signal processing with very sensitive software.
- Low false reject rate due to ESP signal processing system.
- Modular conveyor belt integrated with metal detector and reject systems.
- Full compliance with HACCP criteria.
- Can be equipped to meet e.g. IFS, BRC, M&S requirements.
- DETECTRONIC uses only food-compatible parts that are FDA & USDA compliant.
- Variable speed drive as standard.
- High level of electronic and mechanical reliability.
- Worldwide installations.
- Made in Denmark.

Cheese Inspection and Contaminant Detection Systems

Nelson-Jameson is proud to partner with Valcour Process Technologies to provide our customers with the equipment needed to inspect a wide assortment of product to prevent contamination. The Shield Allegro is a powerful x-ray inspection system that provides a higher level of inspection over traditional metal detectors.

While metal detectors provide reliable and robust contaminant detection technology, x-ray inspection technology helps to ensure improved product quality by providing these additional benefits:

- Designed to inspect a wide assortment of packages up to 450 mm (17.7") wide and 254 mm (10") high. Products are typically inspected after packaging but can be inspected as raw product or packaged in a box.
- Detects smaller sizes of stainless steel (2-2.5 mm vs. 6-8 mm), as well as a variety of other contaminants that aren't possible with a metal detector.
- Easy to use, 17" touch screen display provides a digital trail of images for each product scanned should you need to further investigate customer complaints.
- Features an optional 3-A design, software switchable detector resolution, and 24/7 remote technical support.
- Meets the rigorous quality, reliability, sanitary and capability expectations of the U.S. and Canadian Cheese Production & Converting Markets.
- Developed and made in the USA.



3M™ E-A-R™ ULTRAFIT™ EARPLUGS

- Proprietary, premolded, triple-flange design fits comfortably in most ear canals.
- Hypoallergenic polymer is washable/reusable.
- Stainless steel ball bearing embedded into the plug and an impregnated cord.
- NRR: 25.
- 100 pair/box.



3M

Stock #	Description	Unit
196-2075	Plugs with cord	PR



3M

3M™ E-A-R™ EXPRESS™ POD PLUGS™ EARPLUGS

- Advanced "no-roll" yellow foam tips and blue paddle-style grips to make getting a good fit easier.
- Stainless steel ball bearing embedded into the plug and an impregnated cord.
- NRR: 25.
- 100 pair/box.

Stock #	Description	Unit
196-2072	Plugs with cord	PR

JACKSON SAFETY* H20 EARPLUGS

- Thick stem for easy insertion/removal.
- Three soft flanges conform to the ear canal.
- Metal is embedded in the blue plug.
- NRR: 26.
- 100 pair/box.



JACKSON SAFETY

Stock #	Description	Unit
371-2745	Plugs with cord	BX



X-RAY VISIBLE!

Detectamet
MANUFACTURING DETECTABLE FOOD SAFETY,
OFFICE & PROFESSIONAL CLEANING PRODUCTS

EXPAND-A-BAND HEARING PROTECTOR

- Adjustable headband and silicone ear pieces are 100% metal detectable and x-ray visible.
- Accommodates different head sizes with comfort.

Stock #	Description	Unit
364-7031	Band	EA
364-7033	Replacement tips	CA

3M™ E-A-R™ PUSH-INST™ EARPLUGS

- Soft polyurethane foam tips and blue stem makes fitting and removal easy.
- Stainless steel ball imbedded in plug and an impregnated cord.
- NRR: 28.
- 200 pair/box.



3M

Stock #	Description	Unit
196-2062	Plugs with cord	BX

X-RAY VISIBLE!

3 FLANGE EARPLUGS

- Hygienic silicone is washable/reusable.
- Blue plug and cord are 100% metal detectable and x-ray visible.
- 100 pair/box.

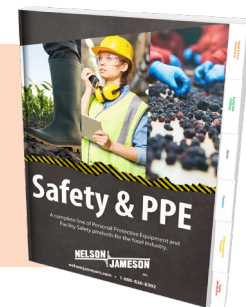


Stock #	Description	Unit
364-2657	Plugs with cord	BX

Detectamet
MANUFACTURING DETECTABLE FOOD SAFETY,
OFFICE & PROFESSIONAL CLEANING PRODUCTS

Looking for More Safety Products?

Call to request a FREE copy of our full line Safety & PPE Catalog today!



3M™ E-A-RSOFT™ EARPLUGS

- Soft, pliable slow recovery foam for excellent noise reduction and comfort.
- Stainless steel ball imbedded in plug and an impregnated cord.
- NRR: 32.
- 200 pair/box.

Stock #	Description	Unit
196-2045	Plugs with cord	BX

3M**HOWARD LEIGHT™ LASERTRAK® EARPLUGS**

- Bright orange and blue plug with metal grommet.
- Blue vinyl cord.
- NRR: 32.
- 100 pair/box.

Stock #	Description	Unit
197-2510	Plugs with cord	BX

**Honeywell**
HOWARD LEIGHT**3M™ E-A-R™ CLASSIC™ EARPLUGS**

- Constructed from slow-recovery, low-pressure foam.
- Stainless steel ball imbedded in the plug and an impregnated cord.
- NRR: 33.
- 200 pair/box.

Stock #	Description	Unit
196-2018	Plugs with cord	BX

**3M****What is a NRR Rating?**

Noise Reduction Rating is the measurement, in decibels, of how well a hearing protector reduces noise. The higher the number, the greater the protection.

Why Blue?

Many metal detectable products are colored blue for two reasons:

1. Easy visual detection
2. It is the most common non-food color.

What is the Difference Between Embedded Metal and Impregnated Material?

A product with embedded metal is only detectable if the product piece containing the metal goes through a detector. With a product that is impregnated, the entire piece has fine metal particles throughout, making the entire piece, or parts of it, detectable.

**JACKSON****JACKSON SAFETY* H10 DISPOSABLE EARPLUGS**

- Soft, bullet-shaped roll down foam blue earplugs.
- Metal is embedded in the earplug for quick detection.
- NRR: 31.
- 100 pair/box.

Stock #	Description	Unit
371-2735	Plugs with cord	BX

3M™ E-A-RSOFT™ SUPERFIT™ EARPLUGS

- Features the proprietary SuperFit fitting ring to help insure proper fit.
- Stainless steel ball bearing imbedded into the plug and impregnated cord.
- NRR: 32.
- 200 pair/box.

Stock #	Description	Unit
196-2019	Plugs with cord	BX

3M**DISPOSABLE EARPLUGS**

- Fully detectable and x-ray visible, these corded earplugs feature a metal insert inside the foam plug and cord.
- The soft roll-down foam allows for easy insertion, and is free from latex, silicone, and phthalates.
- NRR: 32.
- 250 pair/box.

Stock #	Description	Unit
364-7754	Yellow plug with Blue cord	BX
364-7744	Blue plug with Blue cord	BX

X-RAY VISIBLE!**Detectamet™**
MANUFACTURING DETECTABLE FOOD SAFETY,
OFFICE & PROFESSIONAL CLEANING PRODUCTS

NEW

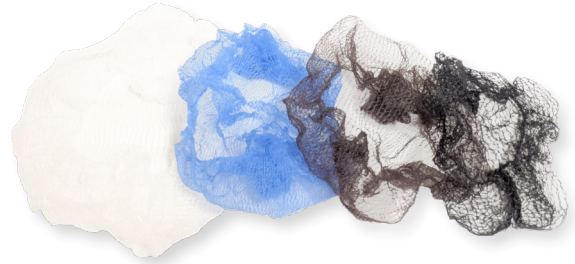
Introducing all new Metal Detectable Safety Products. Protect your product and your employees!

STANDARD HAIRNETS

- Made out of lightweight, non-woven polypropylene.
- Metal detectable strip.
- 100/bag; 10 bags/case.



Stock #	Color	Unit
21"		
364-2477	White	CA
364-2476	Red	CA
364-2101	Blue	CA

**POWER HOLD HEAVY-DUTY HAIRNETS**

- Contains hair 70% better than honeycomb and 82% better than bouffant caps.
- Metal detectable ferrous metal clip closure.
- Latex free.
- 100/bag; 10 bags/case.

Stock #	Color	Unit
21"		
358-7152	White	CA
358-7153	Blue	CA
358-7154	Brown	CA
358-7155	Black	CA
24"		
358-7156	White	CA
358-7157	Blue	CA
358-7158	Brown	CA
358-7159	Black	CA

**POWER HOLD HEAVY-DUTY BEARD COVERS**

- Contains hair 70% better than honeycomb and 82% better than bouffant caps.
- Metal detectable ferrous metal clip closure.
- Latex free.
- Universal size.
- 100/bag; 10 bags/case.

Stock #	Color	Unit
358-7161	White	CA
358-7160	Blue	CA
358-7162	Brown	CA
358-7163	Black	CA

BEARD COVERS

- Made out of non-woven polypropylene.
- Metal detectable strip.
- 100/bag; 5 bags/case.

Stock #	Color	Unit
364-2475	White	CA
364-2474	Red	CA
364-7145	Blue	CA

**N95 FOLD FLAT RESPIRATOR**

- Fold flat design with valve and adjustable straps.
- Metal detectable nose clip, valve, and strap mounts.
- Adjustable straps.
- Blue.
- 10/pack.

Stock #	Unit
364-2113	PK

**N99 RESPIRATOR**

- Designed specifically for the food industry.
- Metal detectable nose clip, valve, and strap mounts.
- Adjustable straps.
- Blue.
- 5/pack.

Stock #	Unit
364-7456	PK



X-RAY VISIBLE!**DETECTABLE EYEWEAR**

- X-ray visible.
- Blue anti-fog lens with blue frame.
- Perfect for food and pharmaceutical industries.

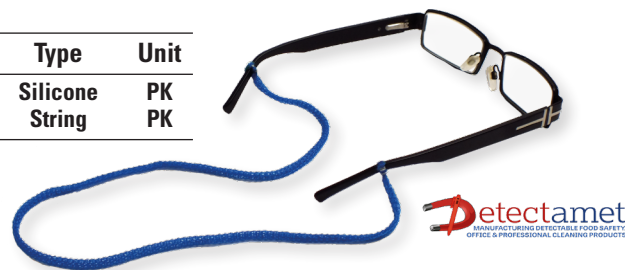


Stock #	Description	Unit
364-7474	Lightweight Safety Glasses	EA
364-7475	Ultra Lightweight Safety Glasses	EA
364-7476	Lightweight Over the Glasses	EA

DETECTAMET EYEGLASS LANYARDS

- High-visibility blue.
- Lightweight and comfortable cord.
- 25/pack.

Stock #	Type	Unit
364-7477	Silicone	PK
364-7478	String	PK

**SLEEVE PROTECTORS**

- Made from metal and x-ray detectable polymer.
- Entire sleeve is detectable.
- Elastic on both ends.
- 15" L x 7-1/2" W.
- 500 pair/case.



Stock #	Color	Unit
364-7741	Blue	CA

SHOE COVERS

- Made from metal and x-ray detectable polymer.
- Entire shoe cover is detectable.
- 5-1/2" W x 15-3/4" L.
- 500 pair/case.



Stock #	Color	Unit
364-7740	Blue	CA

**DETECT-A-GLOVE VINYL GLOVES**

- 5 mil, powder-free, blue vinyl disposable gloves.
- Detectable in electromagnetic range of 50Khz-1Mhz.
- FDA accepted materials.
- 100/box; 10 boxes/case.

Stock #	Size	Unit
364-2660	S	BX
364-2661	M	BX
364-2662	L	BX
364-2663	XL	BX

NEW**DETECT-A-GLOVE RUBBER GLOVES**

- 17 mil, powder-free, blue rubber reusable gloves.
- Complies with FDA and EU regulations.
- 12 pair/dozen; 10 dozen/case.

Stock #	Size	Unit
364-7465	6	DZ
364-7466	7	DZ
364-7467	8	DZ
364-7468	9	DZ
364-7469	10	DZ

NEW**X-RAY VISIBLE!****DETECT-A-GLOVE NITRILE GLOVES**

- 15 mil, powder-free, blue nitrile reusable gloves.
- Manufactured from EU and FDA approved food contact materials
- 12 pair/dozen.

Stock #	Size	Unit
364-7459	6	DZ
364-7460	7	DZ
364-7461	8	DZ
364-7462	9	DZ
364-7463	10	DZ
364-7464	11	DZ

X-RAY VISIBLE!



DETECTAMET METAL AND X-RAY DETECTABLE BANDAGES

- Bright blue polyethylene for easy recognition.
- Sterile, waterproof and impermeable to oil and fat.
- Two types of metal strips positioned behind the pad.

Stock #	Size	Packaging	Unit
364-7500	1.5" x 1.5"	100/pk	PK
364-7501	0.75" x 2.5"	100/pk	PK
364-7502	1.2" x 2.5"	100/pk	PK
364-7503	0.75" x 2.8"	100/pk	PK
364-7504	1" x 2.8"	100/pk	PK
364-7505	1.5" x 2.8"	50/pk	PK
364-7506	2" x 2.8"	50/pk	PK
364-7507	0.78" x 4.72"	50/pk	PK
364-7508	Assorted	100/pk	PK

NEW



MEDLINE METAL DETECTABLE BANDAGES

- Curad bandages meet the needs of the food industry with blue high-visibility.
- Seals around all four sides to protect from dirt and germs.
- Detectable metal hidden behind the non-adherent pad.

Stock #	Description	Packaging	Unit
197-1093	1" x 3" Plastic Strip	1200/ca	CA
197-1062	1" x 3" Flex-Fabric™ Strip	1200/ca	CA
197-1063	Flex-Fabric™ Knuckle	1200/ca	CA
197-1068	Flex-Fabric™ Fingertip	1200/ca	CA

NELSON JAMESON

INC.

Nelson-Jameson, Inc.

2400 East Fifth Street
Marshfield, WI 54449

CHANGE SERVICE REQUESTED

EAR SAVERS

NJ511-20

METAL DETECTABLE EAR SAVERS

X-RAY VISIBLE!

NEW

- Designed for disposable and reusable face masks.
- Allows user to adjust face mask to a comfortable fit.
- X-ray detectable.
- 3-1/3" x 7/8" x 1/16".
- 10/pack.

Stock #	Color	Unit
364-7629	White	PK
364-7626	Red	PK
364-7628	Yellow	PK
364-7624	Blue	PK
364-7627	Green	PK
364-7625	Black	PK
364-7631	Orange	PK
364-7630	Purple	PK



What Makes Products Metal Detectable?

In plastic products such as scrapers, pens, and vinyl gloves, a unique manufacturing process involving the inclusion of a metallic pigment enables the plastic to be detected. In other products such as earplugs, a stainless steel ball bearing is enclosed in the plug to make them detectable.