

# ATP Testing Products

Provide a measurable and objective assessment of the cleanliness of equipment and surfaces prior to food processing or preparation with ATP Testing Products.



*Featuring products from quality manufacturers, including:*



# 3M™ Clean-Trace™ Hygiene Monitoring and Management System

## Features & Benefits

- Easy to learn user interface features intuitive navigation/screen menus.
- Wireless capabilities with Bluetooth® Technology.
- Photos can be easily downloaded to appear on the luminometer.
- Durable, impact resistant casing stands up to harsh manufacturing environments.
- Self-diagnostic check on start-up.
- Includes 3M™ Clean-Trace™ Hygiene Monitoring and Management Software to help you monitor testing results over time.
- Redesigned software dashboard provides a quick and easy way to create, store and retrieve reports.
- Quickly pinpoint where a sanitation problem occurred and address it.
- Stay organized with audit-ready reports.



Stock #	Description	Packaging	Unit
351-3400	3M Clean-Trace Hygiene Monitoring and Management System	-	EA
351-3655	2-Year Extended Warranty	-	EA

## Compatible Products

Stock #	Description	Packaging	Unit
<b>3M Clean-Trace Test Swabs</b>			
351-3038	3M Clean-Trace Surface ATP Test	100/ca	CA
351-3039	3M Clean-Trace Water Plus Total ATP Test	100/ca	CA
351-3040	3M Clean-Trace Water Free ATP Test	100/ca	CA
<b>3M Clean-Trace Controls</b>			
351-3210	3M Clean-Trace ATP Positive Surface Control	10 vi/ca	CA
351-3095	3M Clean-Trace ATP Positive Water Control	10 vi/ca	CA

351-3039



351-3040



351-3038



351-3210

**Want to learn more about how to quantify ATP testing?**

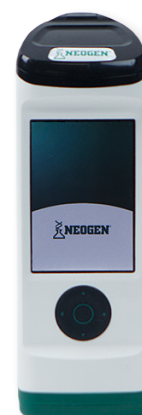
Scan the QR code to watch an in-depth video on the topic!



# NEOGEN®'s AccuPoint® Advanced Next Generation (NG) ATP Reader

## Features & Benefits

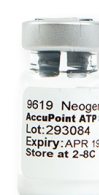
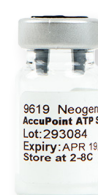
- Easy to use ergonomic design.
- Flat tip sampler for maximized recovery of ATP.
- Glove compatible touch screen interface.
- Connect to Wi-Fi networks for secure data transfer.
- Newly redesigned Data Manager with Smart Plans reporting software.
- Create multiple routine testing plans.
- Automated reporting.
- Easily compare ATP results for a variety of facilities/locations.
- Receive recommendations based on problem areas.



Stock #	Description	Packaging	Unit
498-3180	AccuPoint Advanced Next Generation ATP Reader	-	EA

## Compatible Products

Stock #	Description	Packaging	Unit
<b>Neogen Test Swabs</b>			
498-3605	Neogen AccuPoint Advanced ATP Sampler—Surface	100/bx	BX
498-3601	Neogen AccuPoint Advanced ATP Samplers—Water	100/bx	BX
498-3606	Neogen AccuPoint Advanced ATP Samplers—Access	100/bx	BX
<b>Neogen Standards and Controls</b>			
498-3184	AccuPoint ATP Standards Kit	2 vi/kt	KT
498-3185	AccuPoint ATP Positive Controls	3 vi/kt	KT
498-3186	AccuPoint Advanced Next Generation Electronic Control Kit	1/ea	EA



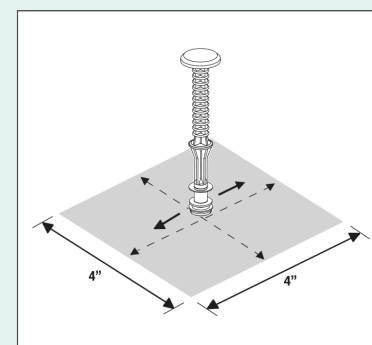
498-3184

## HOW TO EFFECTIVELY SWAB

When sampling a surface it is critical that a standard method be established and communicated to everyone who will be taking the samples. All commercial ATP systems are standardized on a 4" x 4" square for flat surfaces. The generally accepted procedure is to draw the square on the surface and then crisscross the sampler or swab in a tight weave pattern both horizontally and vertically within the square. The importance of consistent sampling cannot be overstated for valid results.

Since ATP sampling can follow a wet-clean event, it is not unusual to encounter standing pools of liquid on surfaces. It is ideal to avoid these pools of liquid since they can serve to dilute the sample and hinder the absorption of the extracted sample.

For surfaces that cannot accommodate a 4" x 4" square, such as the interiors of nozzles, the best practices method is to establish a sampling pattern that approximates 16 square inches and can be easily replicated and communicated.



NEOGEN. 2021. *ATP Handbook: Best Practices for Effectively Implementing an ATP Sanitation Verification Program.*



# Hygiena™ EnSURE™ Touch Quality Monitoring System

## Features & Benefits

- Intuitive smartphone design.
- Multiple food safety and quality tests.
- Train remote teams with built-in screen sharing capability.
- SureTrend™ Cloud based data management comes standard with purchase.
- Fully interactive dashboard allows for quick data viewing, showing everything at a glance.
- Monitor testing across one or multiple facilities.
- Track re-tests to discover opportunities for retraining or identify equipment that may need replacing.
- Quickly create custom reports to trend testing performance.
- Ability to track and report allergen results on the EsSURE Touch Allergen App. Compatible with five rapid allergen tests: AllerFlow Gluten, AllerSnap™, PRO-Clean™, AlerTox® Sticks, GlutenTox® Pro.



Stock #	Description	Packaging	Unit
<b>332-3600</b>	Hygiena EnSURE Touch Luminometer	-	EA

## Compatible Products

Stock #	Description	Packaging	Unit
<b>ATP Surface Monitoring</b>			
<b>332-3111</b>	UltraSnap™ ATP Surface Test Swabs	100/bx	BX
<b>332-3400</b>	ATP Postive Control Kit	25 vi/bx	BX
<b>High-Sensitivity ATP Monitoring</b>			
<b>332-3330</b>	SuperSnap™ High Sensitivity Surface ATP Testing Swabs	100/bx	BX
<b>ATP Water Monitoring</b>			
<b>332-3210</b>	AquaSnap™ Total Water ATP Testing Swabs	100/bx	BX
<b>332-3178</b>	AquaSnap™ Free Water ATP Testing Swabs	100/bx	BX
<b>Microorganism Detection</b>			
<b>332-3340</b>	MicroSnap™ E. coli and Coliform Enrichment Device	100/bx	BX
<b>332-3310</b>	MicroSnap™ Coliform Detection Device	100/bx	BX
<b>332-3320</b>	MicroSnap™ E. coli Detection Device	100/bx	BX
<b>332-3380</b>	MicroSnap™ Enterobacteriaceae Enrichment Device	100/bx	BX
<b>332-3390</b>	MicroSnap™ Enterobacteriaceae Detection Device	100/bx	BX
<b>332-3360</b>	MicroSnap™ Total Enrichment Device	100/bx	BX
<b>332-3370</b>	MicroSnap™ Total Detection Device	100/bx	BX
<b>Calibration Verification</b>			
<b>332-3601</b>	CalCheck LED Calibration Verification Device	1/ea	EA

332-3111



332-3330



332-3210



332-3601

# Environmental Monitoring Sample Zones

Begin with a mapping exercise to give an overview of the complete facility and production process. This will involve a division of the facility into several areas (zones) based on the microbial risk to the product.



## ZONE 1

### *Product Contact Surfaces*

(Slicers, peelers, fillers, hoppers, screens, conveyor belts, air blowers, employee hands, knives, racks, work tables)



## ZONE 2

### *Non-Food Contact Surfaces In Close Proximity to Food and Food Contact Surfaces*

(Processing equipment exterior and framework, refrigeration units, equipment control panels, switches)



## ZONE 3

### *More Remote Non-Food Contact Surface Located In or Near the Processing Areas*

(Forklifts, hand trucks, carts, wheels, air return covers, hoses, walls, floors, drains)

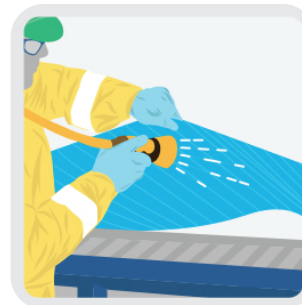
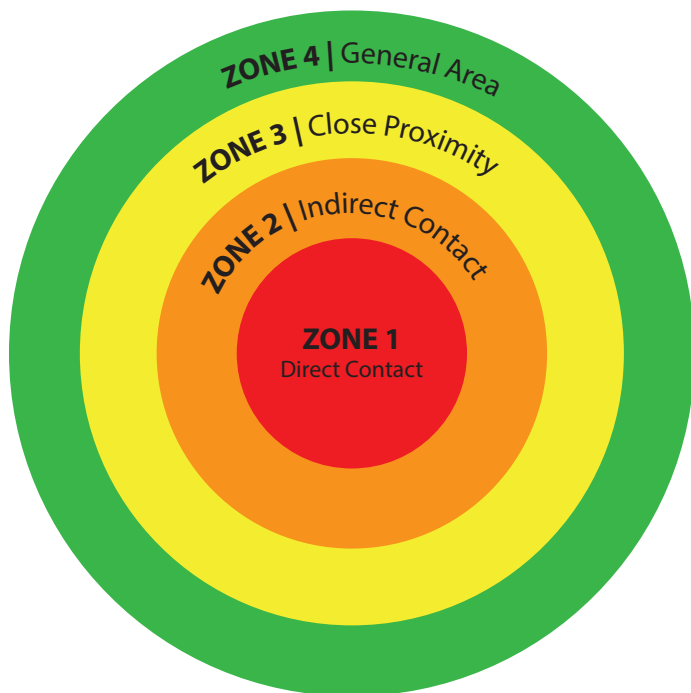
Not typically tested for ATP

## ZONE 4

### *Non-Food Contact Surfaces Outside of the Processing Area*

(Locker rooms, cafeterias, entry/access ways, loading bays, finished product storage areas, maintenance areas)

## Identification of High-Risk Sampling Sites



**PROBABILITY**  
(Difficulty of Cleaning)

	HAZARD (Proximity to Food)	PROBABILITY (Difficulty of Cleaning)		
		Low	Medium	High
	High (generally Zone 1)			
	Medium (generally Zones 2 and 3)			
	Low (generally Zone 4)			

Color = Risk Level

3M. (2019). 3M Environmental Monitoring Handbook (1st Edition)

# PREVENT CROSS-CONTAMINATION & MICROBIAL CHALLENGES

ATP Testing Products rapidly measure actively growing microorganisms through the detection of ATP.

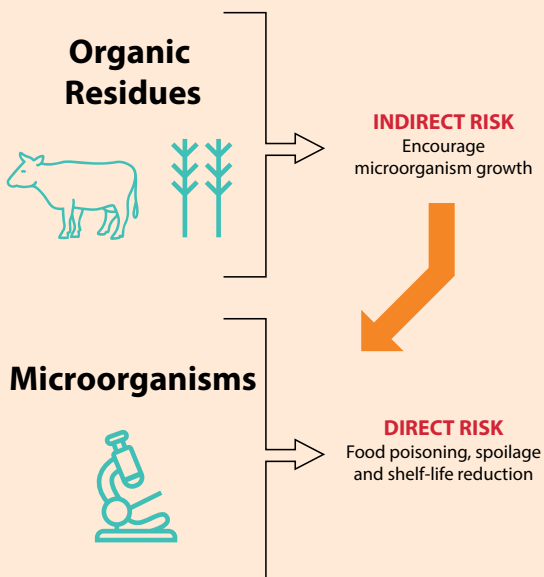
ATP (adenosine triphosphate) is present in every cell. It is the energy molecule for the cell and is broken down to ADP (adenosine diphosphate), releasing energy for the cell to utilize.

As well as being present in living cells, it is present in residues from organic sources such as:

- Food debris remaining on a surface after cleaning.
- Biofilms produced by bacteria.
- Surfaces touched by operators.

## How ATP Indicates Direct & Indirect Risks

- Where the cleaning regime is inadequate or fails, residue from organic sources may remain on the surface.
- When this occurs, both direct and indirect food contamination risks occur.



From 3M™ Environmental Monitoring Handbook

## Support Your Food Safety Program

ATP test results are critical tools for evaluating the ability of a facility's SSOPs to remove soils from a cleaned surface. They do not necessarily identify all potentially dangerous contaminants in the production process. Allergen and microbial organism levels need to be measured and monitored as part of a robust environmental monitoring program.



**For more Environmental Testing  
Solutions, visit our website today!**

NJ703-22